



67 South Main Street, Bandon, Co. Cork.
Tel: 023 / 8844485 Fax: 023 / 8820199

www.pmauctioneers.ie
pmauctioneers@gmail.com
Celebrating 25 Years In Business

For Sale



1 The Court, Wetherton, Bandon, Co Cork. P72 NW84 **3 bed semi on large corner site**

Paddy Murray Auctioneers are delighted to bring to the market this very fine 3 bed semi-detached home on a spacious corner site. No 1 The Court has been well maintained over the years including upgraded features when built, with light prevailing throughout and a west facing garden to the rear. Overlooking a large green area and located in a family friendly residential development, this property is sure to tick a lot of boxes. With a wide range of facilities only minutes away viewing of this home is strongly recommended. This is the ideal purchase for a first timer or even an investor looking for a strong rental potential. All in all this property is sure to appeal to many a discerning buyer with a minimal undertaking of time and effort. Viewing comes highly recommended.

BER C3

BER Number 103131280 215.65kWh/m²/yr

Whilst every care has been taken in the preparation of this brochure, we do not hold ourselves responsible for any inaccuracies made. Intending purchasers should satisfy themselves as to the correctness of the information given. Licensed by the PRSA 001467.

ACCOMMODATION

Hallway 1.82 X 4.56
Timber flooring, stairs to first floor, guest WC, radiator, control panel for alarm, under stairs storage.

Kitchen / Dining 3.57 X 5.52
Built in solid oak kitchen units, granite sink with antique brass taps, tiled surround, recessed lighting, tiled flooring, plumbed for washing services, radiator, sliding door to garden and deck. All kitchen appliances included in the sale.

Living Room 3.96 X 3.58
Cast iron fireplace, bay window to front, radiator, carpet flooring, French doors to kitchen/dining.

Landing 1.96 X 3.2
Hot press, window to side.

Bathroom 1.94 X 2.11
Window to rear, bath with electric shower, WC, WHB, radiator.

Master Bedroom 3.5 X 3.11
Window to rear, built in wardrobes, timber flooring.

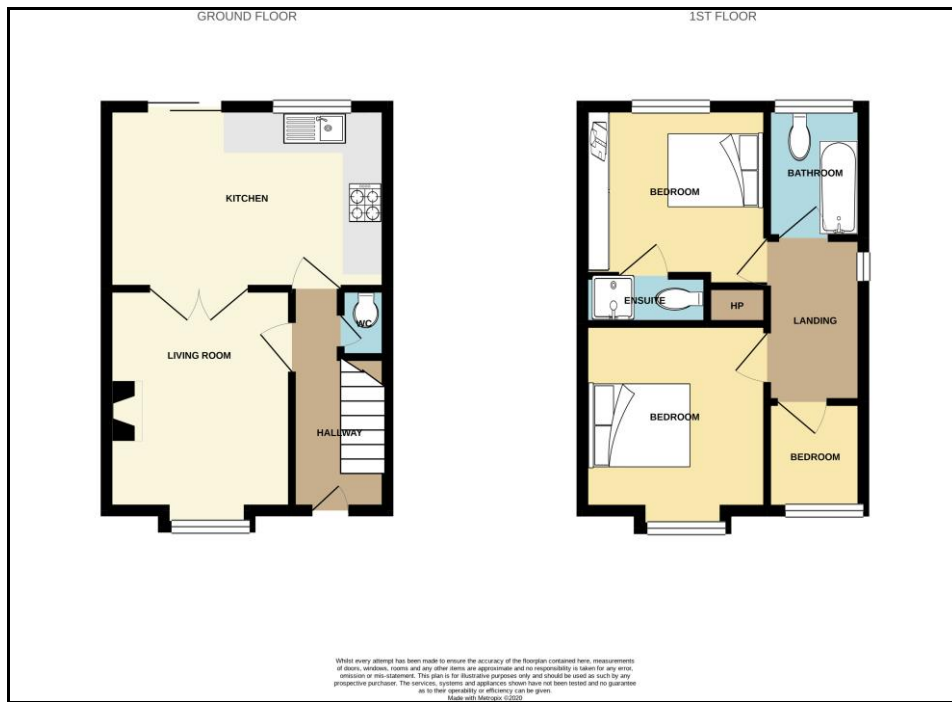
Ensuite
WC, WHB, electric shower.

Bedroom Two 3.46 X 3.18
Bay window to front, timber flooring, built in wardrobe, radiator.

Bedroom Three 2.44 X 2.04
Timber flooring, radiator, window to front.

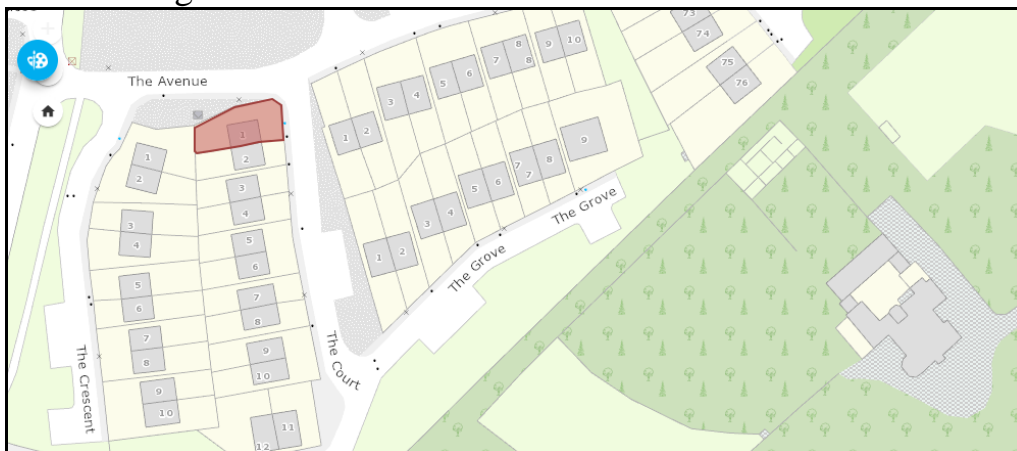


Whilst every care has been taken in the preparation of this brochure, we do not hold ourselves responsible for any inaccuracies made. Intending purchasers should satisfy themselves as to the correctness of the information given.



Features

- Solid Pine doors throughout
- Timber garden shed with gated side access
- Off street parking for 2 cars
- Outside tap.
- Close to all amenities
- Evening sun in the rear garden



Whilst every care has been taken in the preparation of this brochure, we do not hold ourselves responsible for any inaccuracies made. Intending purchasers should satisfy themselves as to the correctness of the information given.