



67 South Main Street, Bandon, Co. Cork.  
Tel: 023 / 8844485 Fax: 023 / 8820199

[www.pmauctioneers.ie](http://www.pmauctioneers.ie)  
[pmauctioneers@gmail.com](mailto:pmauctioneers@gmail.com)  
Celebrating 25 Years In Business

## ***For Sale***



### **29 The Spires Innishannon, Co Cork. T12CYY5 3 bed semi-detached property close to village centre**

**Paddy Murray Auctioneers are delighted to introduce to the market this bright and airy 3 bedroomed property. Located in the highly sought-after residential development of The Spires, No 29 is a perfect opportunity for any first time buyer or young couple to acquire a spacious family home with close proximity to great schools and local amenities. The property enjoys exceptionally bright and spacious accommodation to include a large open plan kitchen dining with French doors overlooking the garden to the rear. So, if you are looking for a convenient family home that has great potential to become a superb home in a mature friendly estate, this may well be the property for you.**

Whilst every care has been taken in the preparation of this brochure, we do not hold ourselves responsible for any inaccuracies made. Intending purchasers should satisfy themselves as to the correctness of the information given. Licensed by the PRSA 001467.

**Hall** 2.0 X 2.08

Front door, timber flooring, alarm panel.  
Guest WC: WC, WHB, window to side.

**Kitchen / Dining** 3.75 X 4.8

Built in Kitchen units, tiled surround, window to side, sink unit, patio doors to garden, recessed lighting, velux window.

**Utility** 1.93 X 1.85

Plumbed for washing services, kitchen units with tiled surround and sink unit, window to side.

**Living Room** 2.84 X 5.16

Stone fireplace with open fire, timber flooring.

**Family Room** 3.54 X 4.81

Fireplace with open fire, two windows to front, cornicing, window to side.

**Landing** 3.26 X 1.90

Hot-press.

**Master Bedroom** 3.83 X 3.55

Built in wardrobes, two windows to front, timber flooring.  
**Ensuite:** WC, WHB, electric shower, window to side.

**Bedroom Two** 2.19 X 3.02

Built in wardrobe, timber flooring, window to rear.

**Bedroom Three** 3.54 X 2.55

Timber flooring, built in wardrobe, window to rear.

**Bathroom** 1.46 X 3.01

Timber flooring, window to side, WC, WHB, bath, strip light.

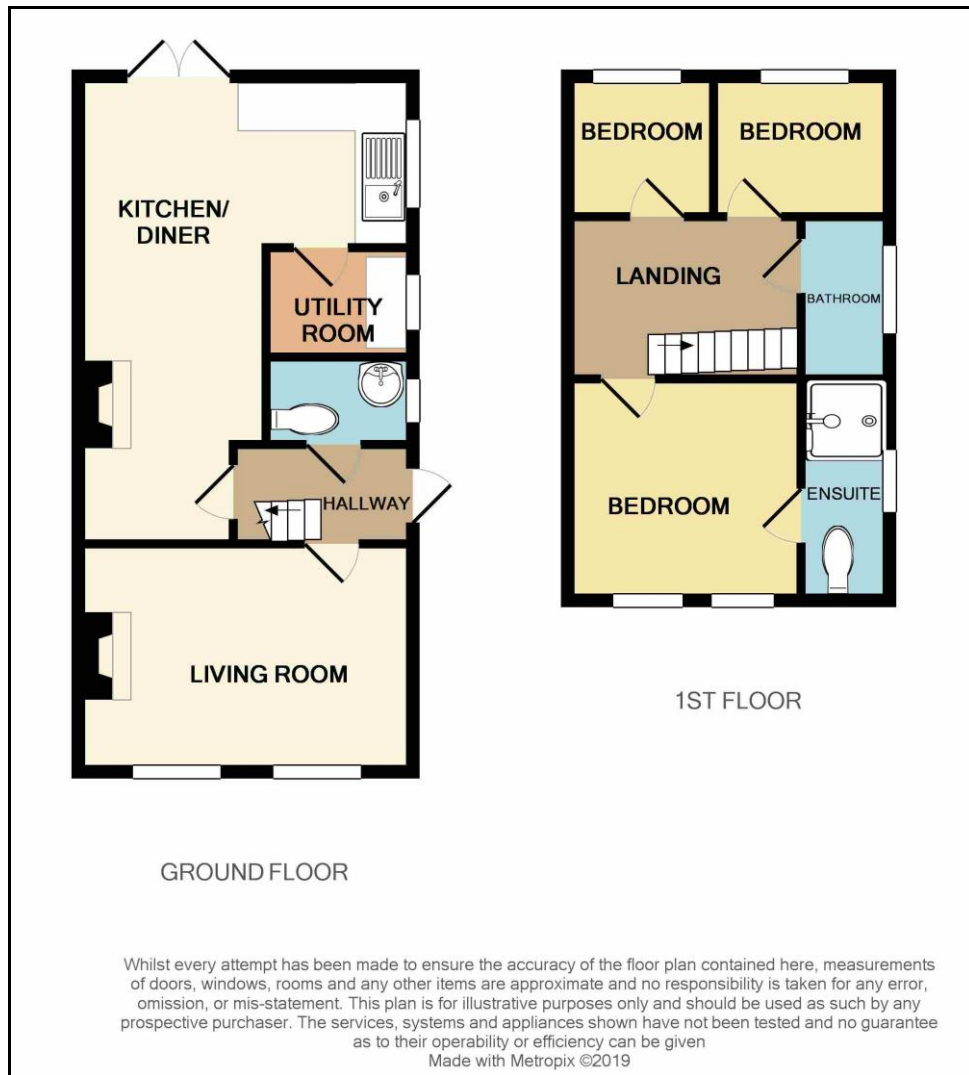


[www.pmauctioneers.ie](http://www.pmauctioneers.ie)



Whilst every care has been taken in the preparation of this brochure, we do not hold ourselves responsible for any inaccuracies made. Intending purchasers should satisfy themselves as to the correctness of the information given.





## Features:

**Mature housing estate**

**A mere stroll to amenities**

**Bright spacious accommodation**

Whilst every care has been taken in the preparation of this brochure, we do not hold ourselves responsible for any inaccuracies made. Intending purchasers should satisfy themselves as to the correctness of the information given.