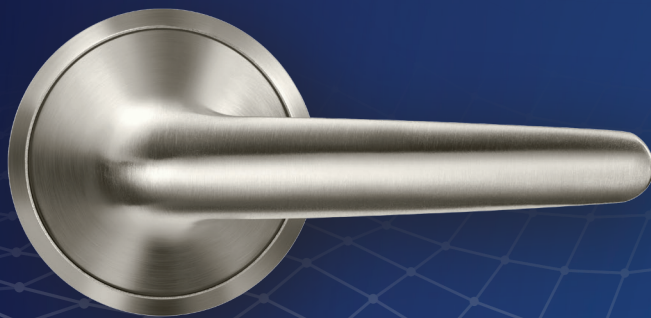


PRODUCT CATALOG

Healthcare Hardware



Experience a safer
and more open world

10X Line Series Cylindrical Lock with BHW Trim	3
HP Series Tubular Lock with Push/Pull ALP Trim	4
114/115 Series Push/Pull Trim	5
8200 Series with BHW Trim	6
8200 Series with BHL Trim	7
8200 Series with Push/Pull Trim (ALP)	8
7800 Series with Push/Pull Trim (PT)	9
7800 Series with Behavioral Health Knob Trim (BHD)	10
9200 Series with Behavioral Health Knob Trim for High Security (BHD)	11
9200 Series with BHW Trim for High Security	12
Functions	13
Turns, Emergency Releases and Indicators	14
Cylinders, Latches, Strikes and Options	15
How To Order	16
Finishes	17
Certifications	18
Architectural Specifications	19-20
Additional Resources	21

MICROSHIELD®

ASSA ABLOY Group companies offer MicroShield®, an anti-microbial coating for door hardware. MicroShield uses proven silver ion-based technology from Agion®, a leading provider of antimicrobial solutions, to stem the spread of bacteria and other microbes.

MicroShield® is a trademark of ASSA ABLOY Access and Egress Hardware Group, Inc.

MICROSHIELD® COATING

- Revolutionary finish coating available on all SARGENT product lines, utilizes a silver-based antimicrobial compound from Agion Technologies
- As an integral part of the finish coating, MicroShield lasts for the life of the hardware
- MicroShield coating permanently suppresses the growth of bacteria, algae, fungus, mold and mildew. It is effective against a broad spectrum of bacteria.
- Non-toxic and completely safe. The Agion antimicrobial compound is EPA and NSF approved and FDA listed for use in medical and food preparation equipment.
- Applications: Anywhere there is need for a clean environment (hospitals, laboratories, schools, medical centers, daycare, food processing etc.)



The Agion antimicrobial is not intended as a substitute for good hygiene. Coated products must still be cleaned to ensure the surfaces will be free of destructive microbes. ASSA ABLOY makes no representations or warranties, express or implied, as to the efficacy of the Agion antimicrobial. A copy of the Agion warranty is available upon request. Agion is a registered trademark of Agion Technologies, Inc., Wakefield, MA, USA.

WARNING

This product can expose you to lead which is known to the state of California to cause cancer and birth defects or other reproductive harm. For more information go to www.P65warnings.ca.gov.

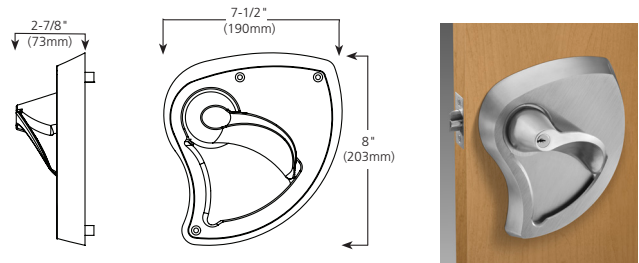
10X Line Cylindrical Lock with BHW* Trim

10X LINE WITH BHW TRIM

Part of the Behavioral Health Series® of products, the 10X Line cylindrical lock with BHW trim provides an innovative solution for behavioral health environments. The unique integrated lever and escutcheon combine aesthetics with safety. Ease of operation, along with the strength and versatility of the 10X Line cylindrical lock allows its use in many applications.

Features

- ANSI/BHMA Grade 1
- UL Fire Rated
- Available in 12 functions
- Easy installation
- Tapered surfaces on all components
- ADA Compliant
- Available with MicroShield®, an antimicrobial coating
- 6 Lobe head security screws (Torx® type) are standard with BHW Trim
- Finish: 32D
- Handed



How To Order

SG-FW-	10X	G37	BHW	32D	RHR
Option	Series	Function	Trim	Finish	Hand*
Mechanical Options this page	10X Line Cylindrical Locks	See page 13	Lever & Escutcheon	32D	RHR
Cylinder Options see 10X Line catalog					LHR
					RH
					LH

*Always specify hand of lock

Specifications

Door Thickness	1-3/4" (44mm) thick door adjusts to 2" (51mm)		
Backset	2-3/4" (70mm) backset w/ 1-1/8" (29mm) front (standard)		
Latchbolt	Stainless steel, 1/2" (13mm) throw		
Front	Stainless steel, 2-1/4" x 1-1-8" (57mm x 29mm) Fixed Bevel		
Hand	Handed - Must specify hand on order		
Options	Cylinders	Brass, 6-pin LA keyway, 1-bitted standard, specify KD for keyed different/random.	
	Backset	23-	3-3/4" (95mm) backset w/ 1-1/8" (29mm) front
		25-	5" (127mm) backset w/ 1-1/8" (29mm) front
	Strikes	29-	800 curved lip strike
		WBS-	Wrought Box Strike
	Electrical Options	RX-	Request to Exit - Monitors each lever independently
	Lead Lining	74-	Lead provided between lockbody and spring cartridge
Antimicrobial Coating	SG-	MicroShield® - antimicrobial clear powder coat	
Strike	Stainless steel, 808 curved lip ANSI 4-7/8" strike standard		
Keys	Two nickel silver change keys per lock standard		
Masterkeying	Can be masterkeyed or grand masterkeyed. Construction keying available		
Outside Locked Lever	Free-wheeling (FW-) or rigid* (RGD) option for outside locked lever MUST be specified for the following functions: 10XG04, 10XG05, 10XG17, 10XG24, 10XG26, 10XG37, 10XG54, 10XU65, 10XG70 and 10XG71		
Stile	8-1/2" (216mm) minimum stile		
Door Prep	ANSI/SDI A250.14 modified per SARGENT standard cylindrical template 4753		

*Although this product is better designed for behavioral health applications than traditional trim, it does not eliminate the risk that an object can be affixed to, or around it. A lockset function that requires a rigid lever when locked or a push/turnbutton may introduce a ligature opportunity.

Packaging

10XG04 x BHW	approx. 14.6 lbs. (6.6kg)	1 per box/case
--------------	---------------------------	----------------

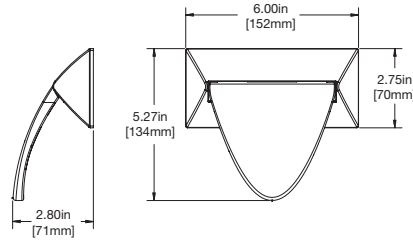
HP Series Tubular Lock with Push/Pull ALP Trim

HP TUBULAR LOCK WITH PUSH/PULL ALP TRIM

The HP Series Tubular Lock with ALP push/pull trim provides an aesthetically-pleasing alternative to standard push/pull products. Ease of operation allows its use in many environments, including healthcare and education. The paddle shape and location create a comfortable target for door activation without using hands.

Features

- Paddle trim can be mounted in horizontal (up or down) or vertical (sideways) orientations in the field
- Easy installation
- Available in 2 functions
- 15 function trim is non-handed; lockbody is easily field reversible
- Through-bolted trim for stability
- Available in 2-3/4", 5" or 7" backsets
- UL Fire Rating standard
- Torx® and spanner screws optional with ALP
- Lead lining is optional: specify 74- option
- Covers and paddles are cast stainless steel
- Finish: 32D



Shown with optional Push/Pull identification

How To Order

SG-	HP	U65	ALP	32D	RHR
Option	Series	Function	Trim	Finish	Hand*
Mechanical Options this page	HP Series Tubular Locks	U15 - Passage U65 - Privacy	Push/Pull Trim	32D	RHR
					LHR
					RH
					LH

- *Always specify hand of lock
- 15 function is Non-Handed
- 5" Backset standard with square corner front, 2-1/4" x 1-1/8"

Series and Function	Descriptions
HPU15 Passage	- Both paddles retract latch - Ideal for patient rooms and closets
HPU65 Privacy	- Inside paddle always retracts latch - Outside paddle retracts latch, except when locked by inside push button - Closing door unlocks outside paddle - Includes emergency release - Ideal for bathrooms - Vertical orientation required



Specifications

Door Thickness	1-3/4" (44mm) to 1-7/8" (47mm) standard; for doors greater than 1-7/8" (47mm) to 2-1/4" (57mm), specify 31- and door thickness (For thicker doors, consult factory)		
Backset	5" (127mm) standard. For 2-3/4" (70mm) backset (specify as 24-HP) and 7" (177mm) backset (specify as 26-HP) available on order		
Strike	4-7/8" (124mm) ANSI/SDI A250 14 ANSI curved lip strike # 808*		
Bolt	Brass, 1/2" (13mm) throw		
Hand	Specify hand (RHR, RH, LHR or LH)		
Escutcheons	Cast stainless steel		
UL Listed	UL Listed for use on fire doors (4x10 opening)		
Options	Backsets	24-	2-3/4" (70mm) backset
		26-	7" (177mm) backset
	Strikes	14-	505 Full Lip Strike
		29-	Strike #800 Lip length 1-1/4" (32mm)
		WBS-	Wrought Box Strike
	Thick Doors	31-	For doors thicker than 1-7/8" to 2-1/4"; specify 31- and door thickness
	Security Screws	36-	6-Lobe Security Head Screws
		37-	Spanner Security Head Screws
Lead Lining	74-	Lead lined	
Antimicrobial Coating	SG-	MicroShield® – Antimicrobial clear powder coat (only available with 32D finish)	
Markers	P-	Push/Pull Paddle Identification (non-handed)	
Finishes	32D For other finishes consult factory		
Finish Protection	CPC-	Clear Powder Coat	
Door Prep	ANSI/SDI A250.14 modified per SARGENT standard bored template 4695		

*This strike provided standard effective February 1, 2026. Option 28- no longer required. If 2-3/4" curved lip strike needed, specify 29- option.

114/115 Series Push/Pull Trim

Designed for convenience and utility, the 114/115 hospital latches open with a gentle pull or slight push, making them ideal for hands free operation. Both the 114 push-pull and 115 push-pull latch with its low profile helps eliminate any obstruction while passing through an opening. Slim tapered paddles and smartly styled escutcheons possess all the elements of tasteful, yet functional design. The chassis design makes this hospital latch constructed for both durability and ease of install.

114 PUSH-PULL



114 push and pull paddles are mounted in the down position as shown and are available with "PUSH" and "PULL" stamped into the top of the escutcheon.

115 PUSH-PULL



115 push are mounted in the up position only and pull paddles are mounted in the down position only. Paddles are available with "PUSH" and "PULL" stamped into the top of the escutcheon as shown.

Specifications

For Doors	1-3/4" (44mm) to 2-1/4" (57mm)		
Backset	5" (127mm) standard. For 2-3/4" (70mm) backset (specify as 24-115) and 7" (177mm) backset (specify as 26-115) available on order		
Strike	4-7/8" (124mm) ANSI/SDI A250.14 ANSI curved lip strike # 808*		
Bolt	Brass, 1/2" (13mm) throw		
Hand	Specify hand (RHR, RH, LHR or LH)		
114	Push/Pull Paddles - both mounted down position only . Cast; Projection from door 3-1/4" (83mm)		
115	Push Paddle - mounted up position only . Cast; 1-5/8" (41mm) x 4-1/2" (114mm); Projection from door 2-1/2" (64mm)		
115	Pull Paddle - mounted down position only . Cast; 1-5/8" x 4-3/4"; Projection from door 2-15/16"		
Escutcheons	Cold drawn; 2-1/2" (64mm) x 6-7/8" (175mm)		
UL Listed	UL Listed for use on fire doors. See Underwriters Laboratories Building Materials List		
Options	Backsets	24-	2-3/4" (70mm) backset
		26-	7" (177mm) backset
	Strike	29-	Strike #800 Lip length 1-1/4" (32mm)
		WBS-	Wrought Box Strike
	Security Screws	36-	6-Lobe Security Head Screws
		37-	Spanner Security Head Screws
	Lead Lining	74-	Lead lined. Specify Push or Pull side
	Antimicrobial Coating	SG-	MicroShield® – Antimicrobial clear powder coat (only available with 26D finish)
Push/Pull Marking	P-	Push/Pull to be stamped on each escutcheon	
Through Bolts	TB-	Through-bolt pack, specify door thickness: 1-3/4", 2" & 2-1/4"	
Finishes	03, 04, 09, 10, 10B, 10BE, 15, 26, 26D For other finishes consult factory		

*This strike provided standard effective July 2025. Option 28- no longer required. If 2-3/4" curved lip strike needed, specify 29- option.

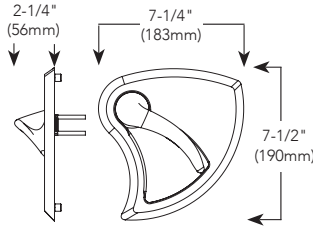
8200 Series with BHW* Trim

8200 SERIES WITH BHW TRIM

Part of the Behavioral Health Series® of products, the 8200 Series mortise lock with BHW trim provides an innovative solution for behavioral health environments. The unique integrated lever and escutcheon combines aesthetics with safety. Ease of operation, along with the strength and versatility of the 8200 Series mortise lock allows its use in many applications.

Features

- ANSI/BHMA Grade 1
- UL Fire Rated
- Available in 48 functions
- Uses standard mortise prep
- Easy installation
- Tapered surfaces on all components
- ADA Compliant
- Available with MicroShield®, an antimicrobial coating
- 6 Lobe head security screws (Torx® type) are standard with BHW Trim
- Matching thumbturn
- Finish: 32D
- Trim only option available with existing sectional and escutcheon trim only
- Handed
- BHW trim only kits. Includes inside and outside trim. Cylinder functions include 1SB- collar for use with 1-1/8" cylinders.
 - 694-1 Trim only, non-keyed functions
 - 694-2 Trim only, single cylinder functions
 - 694-3 Trim only, double cylinder



How To Order

SG-11-	82	37	BHW	32D	RHR
Option	Series	Function	Trim	Finish	Hand*
Mechanical Options this page	8200 Series Mortise Locks	See page 13	Lever & Escutcheon	32D	RHR
Cylinder Options see 8200 Series catalog					LHR
					RH
					LH

*Always specify hand of lock

Specifications

Door Thickness	1-3/4" (44mm) to 1-7/8" (47mm) standard; for doors greater than 1-7/8" (47mm) to 2-1/4" (57mm), specify 31- and door thickness (For thicker doors, consult factory)		
Backset	2-3/4" (70mm) only		
Case	12 gauge heavy duty wrought steel, zinc dichromate plated. Thickness 7/64" (3mm) (.109")		
Outside Front Plate	Brass, bronze or stainless steel. 8" (203mm) x 1-1/4" (31mm). Adjustable at any angle from flat to beveled 1/8" (3mm) in 2" (51mm)		
Springs	High carbon steel		
Latchbolt	Stainless steel 3/4" (19mm) projection one-piece, anti-friction reversible latch		
Auxiliary Deadlatch	Stainless steel, non-handed		
Deadbolt	One-piece hardened stainless steel, with 1" (25mm) projection		
Hand	Handed - Must specify hand on order		
Options	Cylinders	Brass, size #41 (1-1/8") LA keyway, 1-bitted standard, specify KD for keyed different/random.	
		23- 4-7/8" (124mm) ANSI Strike with 1-1/8" (29mm) Flat Lip	
	Strikes	OBS- Open Back Strike	
		WBS- Wrought Box Strike	
	Thick Doors	31- For doors thicker than 1-7/8" to 2-1/4"; specify 31- and door thickness	
	Electrical Options	DX-	Deadbolt monitoring - Monitor deadbolt position (not available with LX-)
		LX-	Latchbolt monitor - Monitors latchbolt position (not available with deadbolt functions)
		RX-	Request to Exit - Monitors each lever independently (except when used with 56-)
		56-	Motorized electric latch retraction (04, 15, 17, 70, 71, 72, 73 functions)
	Lead Lining	74-	Lock case wrapped in lead (specify hand)
Antimicrobial Coating	SG-	MicroShield® - antimicrobial clear powder coat (available with 32D finish only)	
Strike	Brass, bronze or stainless steel; ANSI/SDI A250.14 standard; curved lip, non-handed (strike box optional)		
Keys	Two, nickel silver (control key or emergency key must be ordered when required) #41 (1-1/8") cylinder supplied standard		
Masterkeying	Can be masterkeyed or grand masterkeyed. Construction keying available		
Stile	8-1/2" (216mm) minimum stile		
Door Prep	ANSI/SDI A250.14 modified per SARGENT standard mortise template 4711		

* Although these products are better designed for behavioral health applications than traditional trim, they do not eliminate the risk that an object can be affixed to, or around them.

Packaging

8205 x BHW	approx. 14.1 lbs. (6.4kg)/box	1 per box/case
------------	-------------------------------	----------------

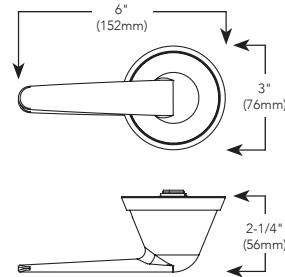
8200 Series with BHL* Trim

8200 WITH BHL TRIM

The SARGENT BHL trim is part of the Behavioral Health Series® of products. With an array of functions, this trim can be used on virtually any opening in healthcare applications. Sloping surfaces and overlapping rose and lever address safety concerns common in behavioral health. Optimal for tough environments, the SARGENT 8200 Series mortise lock provides impressive strength and reliability.

Features

- Available in 41 functions
- UL Fire Rated
- ANSI/BHMA Grade 1
- Inside and outside levers rotate freely up and down to 45° when locked
- Sloped surfaces
- Concealed hardware
- Overlapping lever and rose construction
- ADA compliant
- 6 Lobe head security screws (Torx® type) are standard with BHL Trim
- Non-handed
- Finish: 32D
- Available with MicroShield®, an antimicrobial coating



How To Order

SG-11-	82	37	BHL	32D	LH
Option	Series	Function	Trim	Finish	Hand
Mechanical Options this page	8200 Series Mortise Locks	See page 13	BHL	32D	RHR
Cylinder Options see 8200 Series catalog					LHR
					RH
					LH

Specifications

Door Thickness	1-3/4" (44mm) to 1-7/8" (47mm) standard; for doors greater than 1-7/8" (47mm) to 2-1/4" (57mm), specify 31- and door thickness (For thicker doors, consult factory)	
Backset	2-3/4" (70mm) only	
Case	12 gauge heavy duty wrought steel, zinc dichromate plated. Thickness 7/64" (3mm) (.109")	
Outside Front Plate	Brass, bronze or stainless steel. 8" (203mm) x 1-1/4" (31mm). Adjustable at any angle from flat to beveled 1/8" (3mm) in 2" (51mm)	
Springs	High carbon steel	
Latchbolt	Stainless steel 3/4" (19mm) projection one-piece, anti-friction reversible latch	
Auxiliary Deadlatch	Stainless steel, non-handed	
Deadbolt	One-piece hardened stainless steel, with 1" (25mm) projection	
Hand	Non-handed	
Options	Cylinders	Brass, size #41 (1-1/8") LA keyway, 1-bitted standard, specify KD for keyed different/random.
	Strikes	23- 4-7/8" (124mm) ANSI Strike with 1-1/8" (29mm) Flat Lip
		OBS- Open Back Strike
		WBS- Wrought Box Strike
	Thick Doors	31- For doors thicker than 1-7/8" to 2-1/4"; specify 31- and door thickness
	Security Screws	37- Spanner head security screws (available with front plate and strike only)
	Lead Lining	74- Lock case wrapped in lead (specify hand)
	Antimicrobial Coating	SG- MicroShield® - antimicrobial clear powder coat (available with 32D only)
	Electrical Options	DX- Deadbolt monitoring - Monitor deadbolt position (not available with LX-)
		LX- Latchbolt monitor - Monitors latchbolt position (not available with deadbolt functions)
RX- Request to Exit - Only available when used with 56- (lever monitoring not independent)		
56- Motorized electric latch retraction (04, 15, 17, 70, 71, 72, 73 functions)		
Strike	Brass, bronze or stainless steel; ANSI/SDI A250.14 standard; curved lip, non-handed (strike box optional)	
Keys	Two, nickel silver (control key or emergency key must be ordered when required) #41 (1-1/8") cylinder supplied standard	
Masterkeying	Can be masterkeyed or grand masterkeyed. Construction keying available	
Stile	4-1/2" (114mm) minimum stile	
Door Prep	ANSI/SDI A250.14 modified per SARGENT standard mortise template 7057	

Packaging

8205 x BHL	approx. 6.1 lbs. (2.7kg)/box	6 boxes/case
------------	------------------------------	--------------

* Although these products are a better design for behavioral health applications than traditional trim, they do not eliminate the risk that an object can be affixed to, or around them.

Experience a safer
and more open world

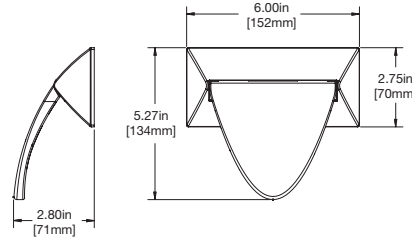
1-800-727-5477 • www.sargentlock.com

7

8200 Series with Push/Pull Trim (ALP)

8200 SERIES WITH PUSH/PULL TRIM (ALP)

The Series 8200 mortise lock with push/pull trim provides an aesthetically-pleasing alternative to standard push/pull products. Ease of operation, along with the strength, versatility and integrity of the 8200 Series mortise lock, allows its use in many types of environments. Perfect for health care facilities, including behavioral health units, patient room doors and operating rooms.



Features

- Available in 45 functions
- Paddle trim can be mounted in horizontal (up or down) and vertical (sideways) orientations in the field
- Easy installation
- Trim is non-handed; lockbody is easily field reversible
- Through-bolted trim for stability
- Torx® and spanner screws optional with ALP
- Lead lining is optional (Lockbody only), specify 74- option
- Covers are cast stainless steel
- Paddles are cast stainless steel
- Finish: 32D

How To Order

SG-11-	82	37	ALP	32D	LHR
Option	Series	Function	Trim	Finish	Hand
Mechanical Options this page	8200 Series Mortise Locks	See page 13	Lever	32D	RHR
Cylinder Options see 8200 Series catalog					LHR
					RH
					LH

Note: ALP trim requires a special 8200 mortise lock body, which is shipped automatically when ALP is specified. When ordering a lock body only for use with ALP trim, please refer to your SARGENT Price Book for the correct ordering number.

Specifications

Door Thickness	1-3/4" (44mm) to 1-7/8" (47mm) standard; for doors greater than 1-7/8" (47mm) consult factory	
Backset	2-3/4" (70mm) only	
Case	12 gauge heavy duty wrought steel, zinc dichromate plated. Thickness 7/64" (3mm) (.109")	
Outside Front Plate	Brass, bronze or stainless steel. 8" (203mm) x 1-1/4" (31mm). Adjustable at any angle from flat to beveled 1/8" (3mm) in 2" (51mm)	
Springs	High carbon steel	
Latchbolt	Stainless steel 3/4" (19mm) projection one-piece, anti-friction reversible latch	
Auxiliary Deadlatch	Stainless steel, non-handed	
Deadbolt	One-piece hardened stainless steel, with 1" (25mm) projection	
Hand	Specify hand on order; easily field reversible	
Options	Cylinders	Brass, size #41 (1-1/8") LA keyway, 1-bitted standard, specify KD for keyed different/random.
	Strikes	23- 4-7/8" (124mm) ANSI Strike with 1-1/8" (29mm) Flat Lip
		OBS- Open Back Strike
		WBS- Wrought Box Strike
	Security Screws	36- 6 Lobe head security screws (Torx® type)
		37- Spanner head security screws
	Indicators	49- Visual Status Indicator or Occupancy Indicator w/Emergency Release
		50- Secured Indicator
	Lead Lining	74- Lock case wrapped in lead (specify hand)
	Antimicrobial Coating	SG- MicroShield® - antimicrobial clear powder coat (only available with 32D finish)
Markers	P- Push/Pull Paddle Identification (Non-handed)	
Electrical Options	RX- Request to Exit - Only available when used with 56- (lever monitoring not independent)	
	56- Motorized electric latch retraction (04, 15, 17, 70, 71, 72, 73 functions)	
	LX- Latchbolt monitor - Only available when used with 56-	
Strike	Brass, bronze or stainless steel; ANSI/SDI A250.14 standard; curved lip, non-handed (strike box optional)	
Keys	Two, nickel silver (control key or emergency key must be ordered when required) #41 (1-1/8") cylinder supplied standard	
Masterkeying	Can be masterkeyed or grand masterkeyed. Construction keying available	
Stile	4-1/2" (114mm) minimum stile	
Door Prep	ANSI/SDI A250.14 modified per SARGENT standard mortise template 705Z	

Packaging

8200 x ALP	approx. 6.1 lbs. (2.7kg)/box	6 boxes/case
------------	------------------------------	--------------

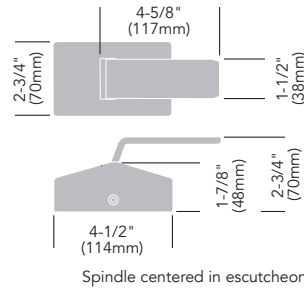
7800 Series with Push/Pull Trim (PT)

7800 SERIES WITH PUSH/PULL TRIM (PT)

The Push/Pull design known for its ease of operation is coupled with the strength and integrity of a mortise lock to provide greater versatility. The trim, commonly used in hospitals and health care facilities, can now service conference rooms, handicapped restrooms, laboratories and pharmaceutical facilities that require more durability and security features than a cylindrical lock can provide.

Features

- Available in 11 functions
- Paddle trim orientation can be mounted in vertical (up or down) and horizontal positions as a standard product, no need for specifying mount positions on order
- Down or horizontal paddle orientation is required for cylinder side of door
- Horizontal paddle orientation is required if a thumb turn or an emergency release is used.
- Easy installation
- Handing is easily field reversible
- Through-bolted trim for stability
- 6 Lobe security type screws (Torx®) standard for PT trim
- Engraving on paddle – consult factory
- Lead lining is optional (Lockbody only), specify 74- option
- Covers are heavy wrought stainless steel, brass or bronze
- Paddles are cast stainless steel, brass or bronze
- Finishes: 3, 4, 9, 10, 10B, 10BE, 10BL, 20D, 32, 32D



How To Order

SG-11- Option	78 Series	37 Function	PT Trim	32D Finish	LH Hand
Mechanical Options this page	7800 Series Mortise Locks	See page 13	Push/Pull Trim	03, 04, 09, 10, 10B, 10BE, 10BL, 20D, 32 or 32D	RHR
					LHR
Cylinder Options see 7800 Series catalog					RH
					LH

NOTE: The PT trim is always supplied with an 7800PT mortise lockbody, all mortise lockbodies are labeled for ease of identification. When ordering lockbody only for PT trim, always specify 7800PT lockbody.

Specifications

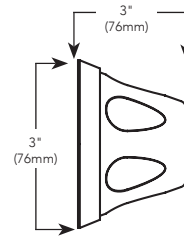
For Doors	Door thickness 1-3/4" (44mm) to 2" (51mm) standard with adaptable spindle. For thicker doors, consult factory.	
Backset	2-3/4" (70mm) only	
Case	12 gauge heavy duty wrought steel, zinc dichromate plated. Thickness 7/64" (3mm) (.109")	
Outside Front Plate	Brass, bronze or stainless steel. 8" (203mm) x 1-1/4" (31mm). Adjustable at any angle from flat to beveled 1/8" (3mm) in 2" (51mm)	
Springs	High carbon steel	
Latchbolt	Stainless steel 3/4" (19mm) projection one-piece, anti-friction reversible latch	
Auxiliary Deadlatch	Stainless steel, non-handed	
Deadbolt	One-piece hardened stainless steel, with 1" (25mm) projection	
Hand	Specify hand on order; easily field reversible	
Options	Cylinders	Brass, size #41 (1-1/8") LA keyway, 1-bitted standard, specify KD for keyed different/random.
	Strikes	23- 4-7/8" (124mm) ANSI Strike with 1-1/8" (29mm) Flat Lip
		OBS- Open Back Strike
		WBS- Wrought Box Strike
	Security Screws	37- Spanner head security screws
	Electrical Options	DX- Deadbolt monitoring - Monitor deadbolt position (not available with LX-)
		LX- Latchbolt monitor - Monitors latchbolt position (not available with deadbolt functions)
RX- Request to Exit - Monitors each lever independently		
Lead Lining	74- Lock case wrapped in lead (specify hand)	
Antimicrobial Coating	SG- MicroShield® - antimicrobial clear powder coat (available with 32D finish only)	
Strike	Brass, bronze or stainless steel; ANSI/SDI A250.14 standard; curved lip, non-handed (strike box optional)	
Keys	Two, nickel silver (control key or emergency key must be ordered when required)	
Masterkeying	Can be masterkeyed or grand masterkeyed. Construction keying available	
Stile	5" (127mm) minimum stile for 7800 Push/Pull Trim	
Door Prep	ANSI/SDI A250.14 modified per template (see template 4512 only)	

7800 Series with BHD* Trim

7800 SERIES WITH BHD TRIM

Features

- Available in 43 functions
- UL Fire Rated
- ANSI/BHMA Grade 1
- Sloped surfaces on all components
- Overlapping knob and rose construction
- Finish: 32D
- Available with MicroShield® option, antimicrobial coating



How To Order

SG-67	78	37	BHD	32D
Option	Series	Function	Trim	Finish
Mechanical Options this page	7800 Series Mortise Locks	See page 13	Knob	32D
Cylinder Options see 7800 Series catalog				

Specifications

Door Thickness	1-3/4" (44mm) to 1-7/8" (47mm) standard; for doors greater than 1-7/8" (47mm) to 2-1/4" (57mm), specify 31- and door thickness (for thicker doors, consult factory)			
Backset	2-3/4" (70mm) only			
Case	12 gauge heavy duty wrought steel, zinc dichromate plated. Thickness 7/64" (3mm) (.109")			
Outside Front Plate	Brass, bronze or stainless steel. 8" (203mm) x 1-1/4" (31mm). Adjustable at any angle from flat to beveled 1/8" (3mm) in 2" (51mm)			
Springs	High carbon steel			
Latchbolt	Stainless steel 3/4" (19mm) projection one-piece, anti-friction reversible latch			
Auxiliary Deadlatch	Stainless steel, non-handed			
Deadbolt	One-piece hardened stainless steel, with 1" (25mm) projection			
Hand	Non-handed			
Options	Cylinders	Brass, size #41 (1-1/8") LA keyway, 1-bitted standard, specify KD for keyed different/random.		
	Strikes	23-	4-7/8" (124mm) ANSI Strike with 1-1/8" (29mm) Flat Lip	
		OBS-	Open Back Strike	
		WBS-	Wrought Box Strike	
	Lever/Knob Combination	67-	Lock furnished w/ knob both sides (Not available with AV-Option)	
		68-	Lock furnished w/ lever handle outside x knob inside (Not available with AV- Option)	
		69-	Lock furnished w/ lever handle inside x knob outside (Not available with AV-Option)	
	Thick Doors	31-	For Doors Thicker than 1-7/8" to 2-1/4"; specify 31- and door thickness	
	Security Screws	36-	6 Lobe head security screws (Torx® type)	
		37-	Spanner head security screws	
	Electrical Options	DX-	Deadbolt monitoring - Monitor deadbolt position (not available with LX-)	
		LX-	Latchbolt monitor - Monitors latchbolt position (not available with deadbolt functions)	
	Lead Lining	74-	Lock case wrapped in lead (specify hand)	
Antimicrobial Coating	SG-	MicroShield® - antimicrobial clear powder coat (available in 32D only)		
Strike	Brass, bronze or stainless steel; ANSI/SDI A250.14 standard; curved lip, non-handed (strike box optional)			
Keys	Two, nickel silver (control key or emergency key must be ordered when required) #41 (1-1/8") cylinder supplied standard			
Masterkeying	Can be masterkeyed or grand masterkeyed. Construction keying available			
Stile	4-1/2" (114mm) minimum stile			
Door Prep	ANSI/SDI A250.14 modified per SARGENT standard mortise template 7057			

* Although these products are a better design for behavioral health applications than traditional trim, they do not eliminate the risk that an object can be affixed to, or around them.

Packaging

7837 x BHD	approx. 6.2 lbs. (2.8kg)/box	6 boxes/case
------------	------------------------------	--------------

9200 Series with BHD* Trim for High Security

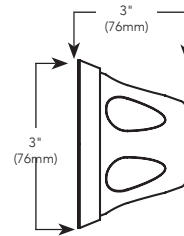
9200 SERIES WITH BHD TRIM FOR HIGH SECURITY

The 9200 Series with BHD Trim is designed to provide additional safety on openings that withstand extreme abuse, vandalism and malicious impact.

It is well-suited for Psychiatric and minimum security detention facilities, as well as exposed perimeter doors in commercial facilities.

Features

- Available in 28 functions
- UL Fire Rated
- ANSI/BHMA Grade 1
- Sloped surfaces on all components
- Overlapping knob and rose construction
- Finish: 32D
- Available with MicroShield® option, antimicrobial coating option



How To Order

SG-67	92	37	BHD	32D
Option	Series	Function	Trim	Finish
Mechanical Options this page	9200 Series Mortise Locks	See page 13	Knob	32D

Specifications

Door Thickness	1-3/4" (44mm) to 1-7/8" (47mm) standard; for doors greater than 1-7/8" (47mm) to 2-1/4" (57mm), specify 31- and door thickness (For thicker doors, consult factory)			
Backset	2-3/4" (70mm) only			
Case	12 gauge heavy duty wrought steel, zinc dichromate plated. Thickness 7/64" (3mm) (.109")			
Outside Front Plate	Brass, bronze or stainless steel. 8" (203mm) x 1-1/4" (31mm). Adjustable at any angle from flat to beveled 1/8" (3mm) in 2" (51mm)			
Springs	High carbon steel			
Latchbolt	Stainless steel 3/4" (19mm) projection one-piece, anti-friction reversible latch			
Auxiliary Deadlatch	Stainless steel, non-handed			
Deadbolt	One-piece hardened stainless steel, with 1" (25mm) projection			
Hand	Non-handed			
Mechanical Options	Cylinders	Brass, size #41 (1-1/8") LA keyway, 1-bitted standard, specify KD for keyed different/random.		
	Strikes	23-	4-7/8" (124mm) ANSI Strike with 1-1/8" (29mm) Flat Lip	
		OBS-	Open Back Strike	
		WBS-	Wrought Box Strike	
	Lever/Knob Combination	67-	Lock furnished w/ knob both sides (Not available with AV-Option)	
		68-	Lock furnished w/ lever handle outside x knob inside (Not available with AV-Option)	
		69-	Lock furnished w/ lever handle inside x knob outside (Not available with AV-Option)	
	Thick Doors	31-	For Doors Thicker than 1-7/8" to 2-1/4"; specify 31- and door thickness	
	Security Screws	36-	6 Lobe head security screws (Torx® type)	
		37-	Spanner head security screws	
Lead Lining	74-	Lock case wrapped in lead (specify hand)		
Antimicrobial Coating	SG-	MicroShield® - antimicrobial clear powder coat (available in 32D only)		
Strike	Brass, bronze or stainless steel; ANSI/SDI A250.14 standard; curved lip, non-handed (strike box optional)			
Keys	Two, nickel silver (control key or emergency key must be ordered when required) #41 (1-1/8") cylinder supplied standard			
Masterkeying	Can be masterkeyed or grand masterkeyed. Construction keying available			
Stile	4-1/2" (114mm) minimum stile			
Door Prep	ANSI/SDI A250.14 modified per SARGENT standard mortise template 7057			

* Although these products are a better design for behavioral health applications than traditional trim, they do not eliminate the risk that an object can be affixed to, or around them.

Packaging

9237 x BHD	approx. 6.2 lbs. (2.8kg)/box	6 boxes/case
------------	------------------------------	--------------

Experience a safer and more open world

1-800-727-5477 • www.sargentlock.com

11

9200 Series with BHW Trim for High Security

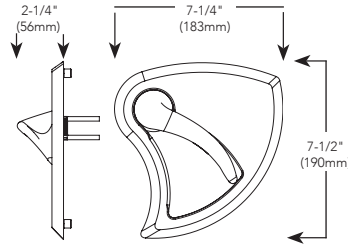
9200 SERIES WITH BHW TRIM FOR HIGH SECURITY

The 9200 Series with BHW Trim is designed to provide additional safety on openings that withstand extreme abuse, vandalism and malicious impact.

It is well-suited for Psychiatric and minimum security detention facilities, as well as exposed perimeter doors in commercial facilities.

Features

- ANSI/BHMA Grade 1
- UL Fire Rated
- Available in 26 functions
- Mogul (M-9200) available in 17 functions
- Uses standard mortise prep
- Matching thumbturn available
- Finish: 32D
- Handed
- Tapered surfaces on all components
- Available with MicroShield®, an antimicrobial coating
- ADA Compliant
- Standard 6-lobe (Torx®) security screws on BHW trim
- Trim Only option available with existing sectional and escutcheon trim only
- BHW trim only kits. Includes inside and outside trim. Cylinder functions include 1SB- collar for use with 1-1/8" cylinders.
 - 694-1 Trim only, non-keyed functions
 - 694-2 Trim only, single cylinder functions
 - 694-3 Trim only, double cylinder



How To Order

SG-67	92	37	BHW	32D	RHR
Option	Series	Function	Trim	Finish	Hand*
Mechanical Options this page	9200 Series Mortise Locks	See page 13	Lever and Escutcheon	32D	RHR
Cylinder Options see 9200 Series catalog					LHR
					RH
					LH

*Always specify hand of lock

Specifications

Door Thickness	1-3/4" (44mm) to 1-7/8" (47mm) standard; for doors greater than 1-7/8" (47mm) to 2-1/4" (57mm), specify 31- and door thickness (For thicker doors, consult factory)	
Backset	2-3/4" (70mm) only	
Case	12 gauge heavy duty wrought steel, zinc dichromate plated. Thickness 7/64" (3mm) (.109")	
Outside Front Plate	Brass, bronze or stainless steel. 8" (203mm) x 1-1/4" (31mm). Adjustable at any angle from flat to beveled 1/8" (3mm) in 2" (51mm)	
Springs	High carbon steel	
Latchbolt	Stainless steel 3/4" (19mm) projection one-piece, anti-friction reversible latch	
Auxiliary Deadlatch	Stainless steel, non-handed	
Deadbolt	One-piece hardened stainless steel, with 1" (25mm) projection	
Hand	Handed - Must specify hand on order	
Mechanical Options	Cylinders	Brass, size #41 (1-1/8") LA keyway, 1-bitted standard, specify KD for keyed different/random.
	Strikes	23- 4-7/8" (124mm) ANSI Strike with 1-1/8" (29mm) Flat Lip
		OBS- Open Back Strike
		WBS- Wrought Box Strike
	Thick Doors	31- For doors thicker than 1-7/8" to 2-1/4"; specify 31- and door thickness
	Electrical Options	DX- Deadbolt monitoring - Monitor deadbolt position (not available with LX-)
		LX- Latchbolt monitor - Monitors latchbolt position (not available with deadbolt functions)
		RX- Request to Exit - Monitors each lever independently
Lead Lining	74- Lock case wrapped in lead (specify hand)	
Antimicrobial Coating	SG- MicroShield® - antimicrobial clear powder coat (available with 32D finish only)	
Strike	Brass, bronze or stainless steel; ANSI/SDI A250.14 standard; curved lip, non-handed (strike box optional)	
Keys	Two, nickel silver (control key or emergency key must be ordered when required) #41 (1-1/8") cylinder supplied standard	
Masterkeying	Can be masterkeyed or grand masterkeyed. Construction keying available	
Stile	8-1/2" (216mm) minimum stile	
Door Prep	ANSI/SDI A250.14 modified per SARGENT standard mortise template 4711	

* Although these products are a better design for behavioral health applications than traditional trim, they do not eliminate the risk that an object can be affixed to, or around them.

Packaging

9237 x BHW	approx. 14.1 lbs. (6.4kg)/box	1 per box/case
------------	-------------------------------	----------------

Turns, Emergency Releases and Indicators

130KBHA Turn for use with 8200 Mortise BHW, ALP, BHL and BHD Trim



- 3-3/4" x 2-1/2" rectangular shape
- Stainless steel housing
- Meets ADA and OMH Requirements

184KBHA Emergency Release (used with BHW, ALP, BHL and BHD trim)



- 2-1/8" x 1-5/8" rectangular shape
- Stainless steel housing
- Meets ADA and OMH Requirements

130W Turn for use with PT Trim



- 1-1/2" (38mm) round brass, bronze or stainless steel plate
- Meets ADA Requirements

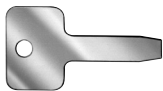


184W Emergency Release for use with PT Trim



- 1-1/2" (38mm) round brass, bronze or stainless steel plate
- For 65, 66 and 68 functions only

Emergency Key 14-0057



- Carbon steel
- For 65, 66 and 68 functions only
- Must be ordered separately

LOCK STATUS AND SECURED INDICATORS FOR USE WITH 8200 MORTISE ALP TRIM

49- Option Visual Status Indicator for Non Secure Applications

- Designed to work with Classroom Security functions
- Red/White indicator plate standard, field replaceable OCC/VAC plate included
- Mounts on inside of door
- Functions available: 30 and 37
- As retrofit, order 185CALP x finish



49- Option Occupancy Indicator with Emergency Release

- Ideal for restrooms or conference rooms where easy determination of use needs to be made
- OCC/VAC indicator plate standard, field replaceable Red/White plate included
- Mounts on outside of door
- Emergency coin operated release standard
- Functions available: 65, 66 and 68
- As retrofit, order 185PALP x finish



50- Option Secured Indicator Rose

- Non-handed mounting
- VAC/OCC indicator plate standard, field replaceable Red/White plate included
- Mounts on outside of door
- Available for the following functions: 24, 25, 26, 28, 29, 30, 36, 37, 38, 39, 40, 41, 43, 45, 50, 51, 52, 67
- Patent pending design
- For retrofit kits: Specify: 186PALP x finish

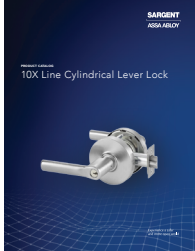


NOTE: For 49- and 50- Options, key will not retract latchbolt when used with 37 and 38 functions lock, the key will lock and unlock outside trim

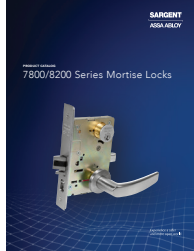
Copyright © 2007-2026, SARGENT Manufacturing Company. All rights reserved. Reproduction in whole or in part without the express written permission of SARGENT Manufacturing Company is prohibited. Patent pending and/or patent: www.assaabloydss.com/patents.

For a complete list of available cylinders, latches, strikes and cylinder options, please refer to the following catalogs:

[10X Line Cylindrical Locks](#)



[7800/8200 Series Mortise Locks](#)

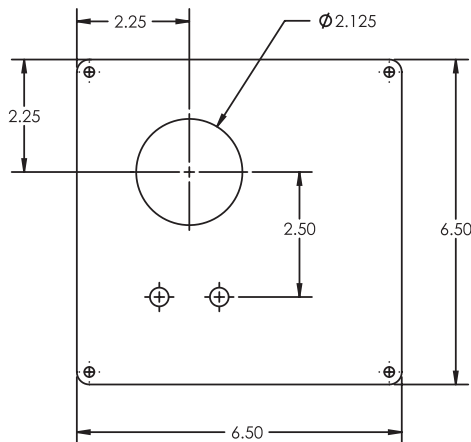


[9200 Series Mortise Locks](#)

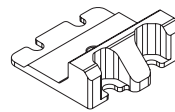


549 KIT FOR RETROFITTING ALP PUSH/PULL TRIM

Contains 2 retrofit plates and 8 screws. Use to cover prep from 114/115 and PT push/pull trim, as well as other manufacturer's trim, when retrofitting ALP trim. Available in 32D finish standard. Order kit #549.



684 POSITIVE PULL STOP KIT



- This kit prevents the latch from retracting when pulling the door closed.
- Used on openings where weather stripping is installed or when door closers are not utilized.
- Order kit # 684

How to Order 10X Line BHW Cylindrical Locks

FW- Option	10X Series	G04 Function	BHW Trim	32D Finish	RHR Hand
Multiple options can be selected	10X Line Cylindrical Lock	Page 13	BHW for 10X Line	32D	RHR
					RH
					LHR
					LH

How to Order 8200BHL/8200 BHW/8200ALP/7800 BHD/9200 BHD/9200 BHW Series Mortise Locks

10- Options	82 Series	71 Function	12VDC Voltage	BHL Trim	32D Finish	RHR Hand
Multiple options can be selected	9200, 8200 or 7800 Mortise Lock	Page 13	12VDC 24VDC	BHL for 8200 BHW for 8200 or 9200 BHD for 7800 or 9200 ALP for 8200	32D	RHR
			Must be specified for Functions 70, 71, 72 & 73			RH
						LHR
						LH

How To Order 7800PT Series Mortise Locks

10- Options	82 Series	71 Function	12VDC Voltage	PT Trim	32D Finish	RHR Hand
Multiple options be selected	7800 Mortise Lock	Page 13	12VDC 24VDC	PT for 7800	03, 04, 09, 10, 10B, 10BE, 15, 10BL, 20D, 32, 32D	RHR
			Must be specified for Functions 70, 71, 72 & 73			RH
						LHR
						LH

How To Order 114/115 Series Push/Pull Units

P- Options	115 Series	26D Finish	RH Hand
See page 5	114	03, 04, 09, 10, 10B, 10BE, 15, 26 & 26D	RHR
			LHR
	115		RH
			LH

How To Order HP Tubular Locks with ALP Trim

SG- Option	HP Series	U65 Function	ALP Trim	32D Finish	RHR Hand
See page 4	HP Series Tubular Locks	15 - Passage 65 - Privacy	Push/Pull	32D	RHR
					LHR
					RH
					LH

Copyright © 2007-2026, SARGENT Manufacturing Company. All rights reserved. Reproduction in whole or in part without the express written permission of SARGENT Manufacturing Company is prohibited. Patent pending and/or patent: www.assaabloyds.com/patents.

90712 05/26

Finishes

10X Line with BHW Trim	8200 or HP locks with ALP Trim	8200 BHW, 8200 BHL, 7800 BHD, 9200 BHD, 9200 BHW	7800 Push/Pull Trim (PT)	114/115 Push-Pull	Description	BHMA
			03	03	Polished brass, clear coated	605
			04	04	Satin brass, clear coated	606
			09	09	Polished bronze, clear coated	611
			10	10	Satin bronze, clear coated	612
			10B	10B	Oxidized bronze, oil rubbed	613
			10BE	10BE	Dark Oxidized Satin Bronze Equivalent	613E
			10BL		Oxidized satin, bronze, clear coated	613L
				15	Satin nickel, clear coated	619
			20D		Statuary dark bronze, clear coated	624
				26	Polished chrome	625
				26D	Satin chrome	626
			32		Polished stainless steel	629
32D	32D	32D	32D		Satin stainless steel	630

SG- MicroShield® antimicrobial clear powder coat (only available with 26D and 32D finishes)

Split Finishes - specify outside finish first, then inside finish example: US26D (outside) / US04 (inside)


CERTIFICATION/COMPLIANCE FPR 10X LINE CYLINDRICAL LOCKS

ANSI/BHMA	Certified ANSI/BHMA A156.2 (2022) Series 4000 — Grade 1 Certified ANSI/BHMA A156.41
UL/cUL	UL/cUL listed to US and Canadian safety standards for 3 hour doors up to 4' x 10' (double doors require 41- option)
UL294	Listed as an Access Control Accessory (10XG70 & 10XG71)
NFPA 80	Conforms for life safety and property protection, Standard for Fire Doors and Other Opening Protectives
Positive Pressure	Meets ANSI/UL 10C, Positive Pressure Fire Test of Door Assemblies
ADA	The force required to activate all levers shall be 5 pounds (22.2N) maximum. All levers conform to ADA clear opening width requirements of ANSI A117.1.
California	California State Reference Code (Formerly Title 19, California State Fire Marshal Standard) All levers with returns comply; levers return to within 1/2" (13mm) of door face
Windstorm/Hurricane	All individual components of a total door opening are required to comply with each code.

Warranty for 10X Line Cylindrical Locks

Warranty	10 year limited warranty, 2 year limited warranty on electrified locks.
-----------------	---

CERTIFICATION COMPLIANCE FOR 8200 & 7800 MORTISE LOCKS

ANSI/BHMA	Certified to ANSI/BHMA A156.13 Series 1000 Operational Grade 1 and Security Grade 1 with all standard trims. ANSI/ASTM F476-84 Grade 40 with concealed mortise cylinder. NOTE: LFIC (Removable) Cylinders and SFIC Cylinders do not meet Security Grade 1 requirements.
ADA 	Meets A117.1 Accessibility Code. Meets BOMA International 4.13.8 Complies with American Disability Act; Consult local authorities
UL	UL and cUL Listed for use with 3 hour fire "A" label 4 x 10 single and 8 x 10 double and lesser class doors. UL symbol on front stamped letter F indicates listing.
Positive Pressure	Meets ANSI/UL 10C, Positive Pressure Fire Test of Door Assemblies
California	California State Reference Code (Formerly Title 19, California State Fire Marshal Standard) All levers with returns comply; levers return to within 1/2" (13mm) of door face

Warranty for 8200 & 7800 Mortise Locks

Warranty	10 year limited warranty, 5 year limited warranty on motorized electric latch retraction (56-), 2 year limited warranty on electrified locks. Warranty limited to replacement of lockbody and/or components.
-----------------	---

CERTIFICATION COMPLIANCE FOR HP TUBULAR LOCKS

ANSI/BHMA	Certified to ANSI/BHMA A156.2 Series 4000 Grade 1 with all standard trims.
ADA	Meets A117.1 Accessibility Code.
UL	UL and cUL Listed for use on 3 hour fire doors (4 x 8 single and smaller doors). UL symbol on front stamped letter F indicates listing.

Warranty for HP Tubular Locks

Warranty	1 year limited warranty. Warranty limited to replacement of Lockbody and/or components.
-----------------	--

Any retrofit or other field modification to a fire rated opening can potentially impact the fire rating of the opening, and Sargent Manufacturing Company makes no representations or warranties concerning what such impact may be in any specific situation. When retrofitting any portion of an existing fire rated opening, or specifying and installing a new fire-rated opening, please consult with a code specialist or local code official (Authority Having Jurisdiction) to ensure compliance with all applicable codes and ratings.

2.1 HEAVY DUTY MORTISE LOCKS

- A. Heavy duty mortise locks shall be 8200/7800 Series as manufactured by SARGENT Manufacturing Company, New Haven, CT.
- B. Locks shall meet or exceed the requirements of ANSI/BHMA A156.13 Series 1000, Operational Grade 1, and Security Grade 1 with all standard trims.
- C. Locks shall be easily re-handed without opening the lock body.
- D. Locks shall comply with UL 10C positive pressure requirements.
- E. Locks required for fire doors shall be listed by Underwriters Laboratories for ratings of A label (3 hours) and less, for doors up to 4'0" (1.2m) x 10' 0" (3.05m) and pairs of doors 8'0" (2.4m) x 10' 0" (3.05m)
- F. Construction:
 - 1. Lock functions shall be manufactured in a single-sized case formed from 12 gauge steel minimum.
 - 2. Lock cases shall be closed on all sides and back.
 - 3. Locks shall have field adjustable, beveled, armored front, with a 1/8" (3mm) thickness minimum.
 - 4. Locks shall have a one piece, 3/4" (19mm) throw anti-friction stainless steel latch.
 - 5. Deadbolts, where specified, shall be full one inch (25mm) throw made of one-piece hardened stainless steel.
- G. Locks shall have a 2-3/4" (70mm) backset, standard.
- H. Strikes shall be non-handed with a curved lip.
- I. To ensure proper alignment, push/pull trim shall be through-bolted.
- J. Locks shall have brass 6-Pin cylinder, standard.
- K. Locks shall have a 10 year limited warranty. 2 year limited warranty on electrified locks.
- L. Behavioral Health, Mortise: ANSI/BHMA A156.13, Series 1000, Operational and Security Grade 1 mortise type manufactured to accepted OMH requirements with ligature-resistant lever and escutcheon trim. Locksets to be manufactured with a corrosion resistant, formed steel case. Levers and escutcheons are manufactured from stainless steel material. Provide optional lead-lining (lock body), Torx® fasteners, and Antimicrobial coating as specified in Hardware Sets.
- M. Behavioral Health, Mortise: ANSI/BHMA A156.13, Series 1000, Operational and Security Grade 1 mortise type manufactured to Office of Mental Health (OMH) requirements with behavioral health lever and rose trim. Locksets to be manufactured with a corrosion resistant, formed steel case. Levers and roses are manufactured from stainless steel material. Provide optional lead-lining (lock body), Torx® fasteners, and Antimicrobial coating as specified in Hardware Sets.

2.2 10X LINE WITH BHW TRIM

- A. Locks shall be 10X Line as manufactured by Sargent Manufacturing Company, New Haven, CT.
- B. Locks shall be listed for low, medium and high risk areas in the New York State Office of Mental Health (NYS-OMH) Patient Safety Standard.
- C. Locks shall be ANSI/BHMA Certified Products Directory (CPD) listed.
 - 1. A156.2, Series 4000, Grade 1
 - 2. A156.41
- D. Locks shall exceed the requirements of ANSI/BHMA A156.2 Series 4000, Grade 1 with all standard trims.
- E. Locks shall comply with UL 10C positive pressure requirements.
- F. Locks required for fire doors shall be listed by Underwriters Laboratories for ratings of 3 hours (A label) and less, for doors up to 4'0" (1.2m) x 10'0" (3.0m) and pairs of doors 8'0" (2.4m) x 10'0" (3.0m)
- G. Locks shall have a chassis design that supports all cylinder formats (except Keso) allowing flexibility for changing from fixed core to interchangeable core cylinders.
- H. Lock lever and escutcheon shall be made of solid stainless steel material.
- I. Locks shall have a 2-3/4" (70mm) standard backset.
- J. Strikes shall be non-handed with a curved lip. Provide wrought boxes with strikes.
- K. Locks shall be available with lead-lining and antimicrobial coating.
- L. Exposed fasteners shall be provided as Torx® security pin standard.
- M. Locks shall have brass 6-pin cylinder standard.
 - 1. Provide two nickel silver keys with each lock.
- N. Electrified functions shall be provided with EcoFlex® Technology.
- O. Locks shall have a ten-year limited warranty on mechanical components and a two-year limited warranty on electric components.

2.3 HP LOCKS WITH ALP TRIM

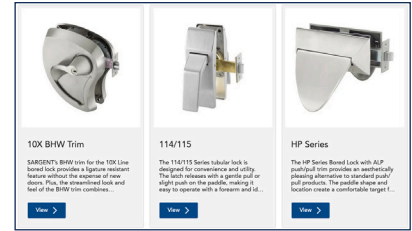
- A. Bored hospital latches shall be HP Series as manufactured by Sargent Manufacturing Company, New Haven, CT.
- B. Locks shall meet or exceed the requirements of ANSI/BHMA A156.2 Series 4000 Operational Grade 1.
- C. Locks shall be easily re-handed with a non-handed curved lip strike.
- D. Locks shall comply with UL 10C positive pressure requirements.
- E. Lockset paddles shall be capable of horizontal or vertical mounting positions.
- F. Locks shall have 2-3/4", 5" or 7" backset available.



[Infographic \(ALP\)](#)



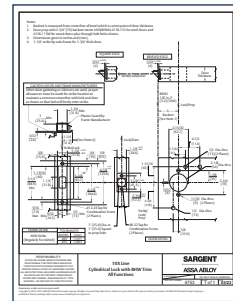
[Healthcare Hardware Infographic](#)



[Specialty Healthcare Locks](#)



[Parts Manuals](#)



[Templates](#)

SELL SHEETS



[SARGENT Behavioral Healthcare](#)



[SARGENT Push/Pull Trim](#)



[SARGENT Push/Pull Trim for K-12 Environments](#)



[SARGENT BHL Trim](#)



[SARGENT Specialty Hardware BHW Trim](#)



[SARGENT 10X Line Bored Lock with BHW Trim](#)

The ASSA ABLOY Group is the global leader in access solutions. Every day, we help billions of people experience a more open world.

ASSA ABLOY Opening Solutions leads the development within door openings and products for access solutions in homes, businesses and institutions. Our offering includes doors, frames, door and window hardware, mechanical and smart locks, access control and service.

SARGENT[®]

ASSA ABLOY

SARGENT Manufacturing Company
100 Sargent Drive
New Haven, CT 06511 USA
800-727-5477
www.sargentlock.com

Founded in the early 1800s, SARGENT[®] is a market leader in locksets, cylinders, door closers, exit devices, electro-mechanical products and access control systems for new construction, renovation, and replacement applications. The company's customer base includes commercial construction, institutional, and industrial markets.

Copyright © 2007-2026, SARGENT Manufacturing Company. All rights reserved. Reproduction in whole or in part without the express written permission of SARGENT Manufacturing Company is prohibited. Patent pending and/or patent www.assaabloydss.com/patents.