

3000 Series Door Closer

Models UNI3301, UNI3501, UNI3311, & UNI3511

UNI Stop™ Arm, Non-Hold Open and Hold Open

Installation Instructions

ACCENTRA

ASSA ABLOY

Standard Frame

1-7/8 to 4-5/8 Frame Reveals (Uses 6190 Bracket)
Bracket illustration page 4
Door and frame preparation page 2

Right Hand Door - RH
Left Hand Reverse - LHR

Left Hand Door - LH
Right Hand Reverse - RHR

Deep Frame

Frame Reveals Over 4-5/8 (Uses 6191 Clamp Kit)
Bracket illustration page 4
Door preparation page 2
Frame preparation page 3

Right Hand Door - RH
Left Hand Reverse - LHR

Left Hand Door - LH
Right Hand Reverse - RHR

Flush Transom

Flush Partitions (Uses 589L Bracket)
Bracket illustration page 4
Door preparation page 2
Frame preparation page 3

Right Hand Door - RH
Left Hand Reverse - LHR

Left Hand Door - LH
Right Hand Reverse - RHR

NOTE: "DL" suffix (Delayed Action) is an optional feature, "H" suffix indicates Hold Open Arm.

NOTES:

- Use this instruction sheet for installation sequence and closer adjustments only.
- It is recommended that the door on which the door closer will be installed be hung on ball bearing hinges. Door must swing freely.
- Door and Frame must be properly reinforced, or use of special fasteners employed, to prevent the mounting screw from pulling out.
- All dimensions are given in inches with corresponding metric dimensions (mm) in parenthesis.

Components

UNI Stop Parallel Arm Assembly

Power Adjustment Shaft

Backcheck Valve

Delay Valve (Optional)

Latch Valve

Sweep Valve

Closer Body

3400P Standard Full Cover

3200P Optional Narrow Plastic Cover

Pinion Cap

3400MA Optional Architectural Metal Cover

3400M Optional Metal Cover

3400A Optional Architectural Plastic Full Cover

Arm Stamping		
Arm Identification		Arm Part Number
Door Width	Non Hold Open	Hold Open
28" - 32" (0.70 - 0.80m)	6100-11 11-6100-0235	6100-1 11-6100-0232
33" - 41" (0.70 - 0.80m)	6100-13 11-6100-0236	6100-3 11-6100-0233
42" - 48" (0.70 - 0.80m)	6100-14 11-6100-0237	6100-4 11-6100-0234

WARNING

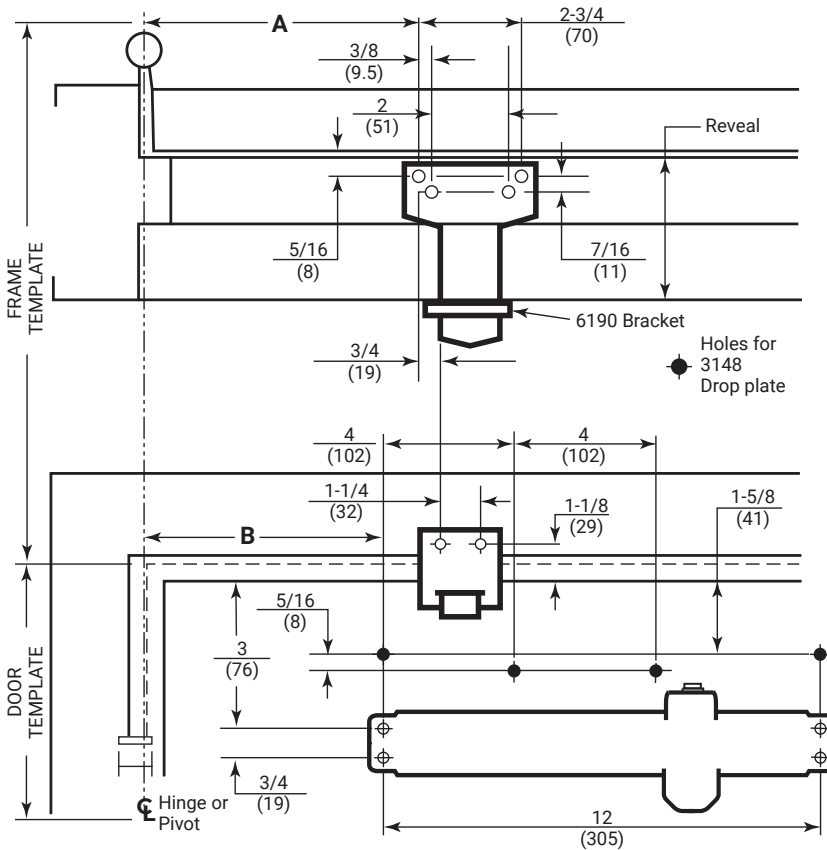
This product can expose you to lead which is known to the state of California to cause cancer and birth defects or other reproductive harm. For more information go to www.P65warnings.ca.gov.

WARNING

Attention Installer: Any retrofit or other field modification to a fire rated opening can potentially impact the fire rating of the opening, and ASSA ABLOY makes no representations or warranties concerning what such impact may be in any specific situation. When retrofitting any portion of an existing fire-rated opening, or specifying and installing a new fire-rated opening, please consult with a code specialist or local code official (Authority Having Jurisdiction) to ensure compliance with all applicable codes and ratings.

Door Template for All Typical Installations:

Frame Template for 1-7/8 to 4-5/8 Reveals



- Door template is typical for all installations.
- Frame template must be selected according to frame reveal:

Frame Template at right

Frame Reveals 1-7/8 (48) to 4-5/8 (117)
(Uses 6190 Bracket)

Bracket Illustration - page 4



Frame Template: page 3

Frame Reveals Over 4-5/8 (117)
(Uses 6191 Clamp Kit)

Bracket Illustration - page 4



Frame Template: page 3

Frame Reveals 0 to 1/8 (0 to 3)
Flush Partitions (Uses 589L Bracket)



Preparation for Fasteners

		Fasteners	Door or Frame	Drill-Sizes
Standard	Self-Drilling Screw		Aluminum or Metal	No drill required
			Wood	3/16" (4.30mm)
Optional	1/4"-20 Machine Screw		Metal	Drill: #7 (0.201" dia) Tap: 1/4"-20
	Sleeve nuts and bolts		Hollow Metal	9/32" (7mm) through; 3/8" (9.5mm) door face opposite of closer
			Aluminum or Wood	3/8" (9.5mm) through
	Through-bolts and grommet-nuts		All	9/32" (7mm); 3/8" (9.5mm) dia. x 3.8" (9.5mm) deep on door face opposite of closer

Dimensions for Doors 28" to 32" Wide

Opening		Dimension A		Dimension B	
Hold Open	Stop	Inches	mm.	Inches	mm.
85°	90°	10-3/8	264	5-1/8	130
90°	95°	9-3/4	248	4-1/2	114
95°	100°	9-1/4	235	4	102
100°	105°	8-7/8	225	3-5/8	92
105°	110°	8-1/2	216	3-1/4	83
110°	115°	8-1/8	206	2-7/8	73

Dimensions for Doors 33" to 41" Wide

Opening		Dimension A		Dimension B	
Hold Open	Stop	Inches	mm.	Inches	mm.
85°	90°	12-3/4	324	7-1/2	191
90°	95°	12	305	6-3/4	171
95°	100°	11-1/2	292	6-1/4	159
100°	105°	11	279	5-3/4	146
105°	110°	10-1/2	267	5-1/4	133
110°	115°	10-1/8	257	4-7/8	124

Dimensions for Doors 42" to 48" Wide

Opening		Dimension A		Dimension B	
Hold Open	Stop	Inches	mm.	Inches	mm.
85°	90°	15-1/8	384	9-3/4	248
90°	95°	14-1/4	362	8-7/8	225
95°	100°	13-5/8	346	8-1/4	210
100°	105°	13	330	7-5/8	194
105°	110°	12-1/2	318	7-1/8	181
110°	115°	12-1/8	308	6-3/4	171

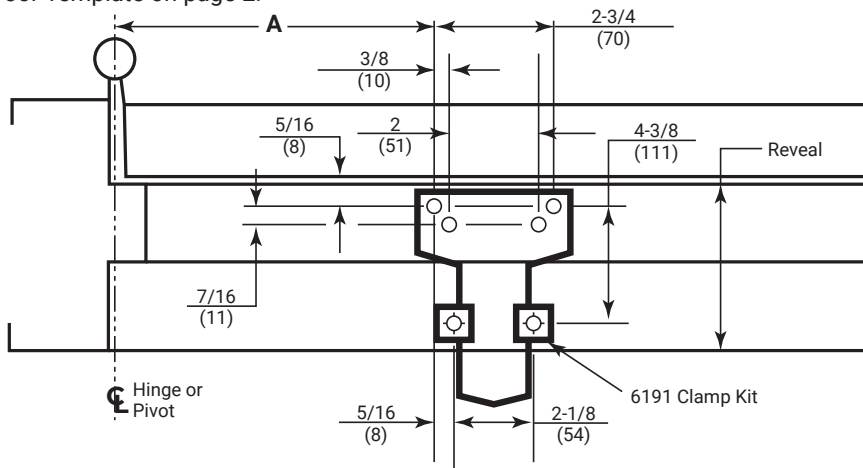
Models UNI3301, UNI3501, UNI3311, & UNI3511

UNI Stop™ Arm, Non-Hold Open and Hold Open

ACCENTRA
ASSA ABLOY

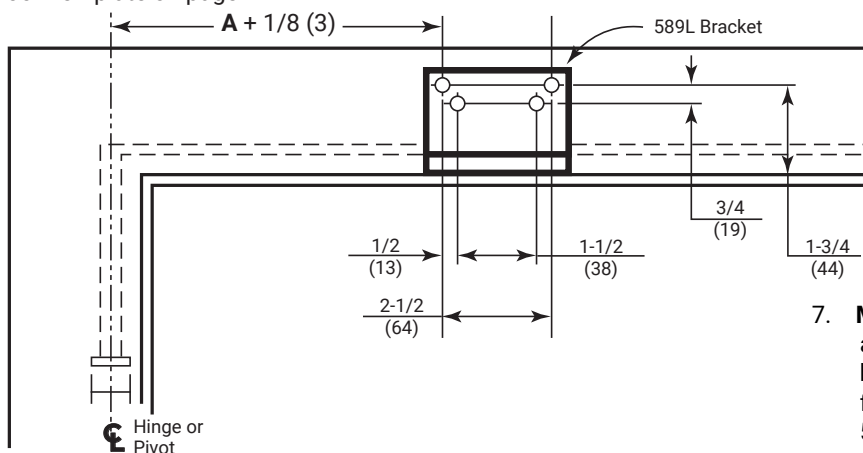
Frame Template for Reveals Over 4-5/8:

Door Template on page 2.



Frame Template for Flush Partitions:

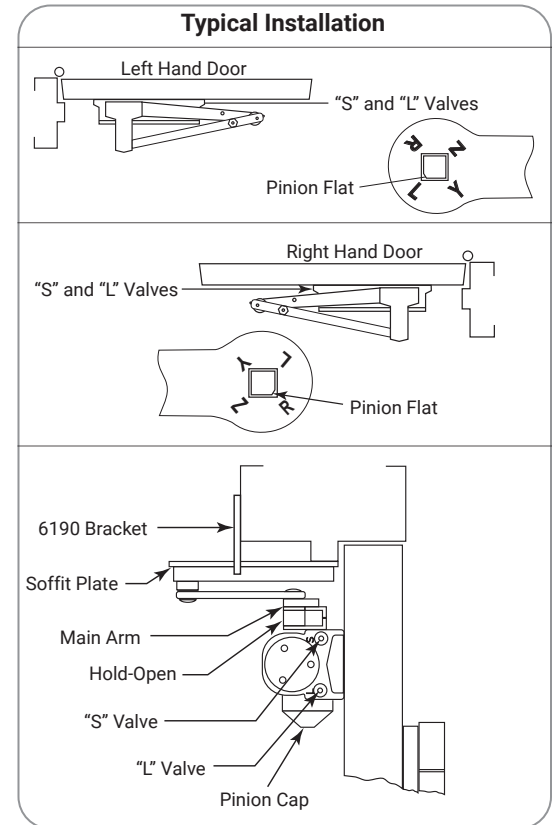
Door Template on page 2.



Installation Sequence

NOTE: Architectural Covers CAN NOT be used for doors swinging over 120° using parallel mount.

- Read Front Page.** Installations and component identification are on this page. Arm assembly must be correct for width of door, see chart.
- Select Correct Door and Frame Template Combination.** Refer to the Template Information on page 2 and above.
- Mark Location of Mounting Holes.** Use dimensions for hold-open or door stop angle desired. Mark position of 4 holes on door for closer (or drop plate) and 6 holes on frame for soffit plate (or 4 for 589L angle bracket).
- Prepare Holes for Fasteners.** Refer to the Preparation for Fasteners chart on page 2.
- Set closer average power.** Use the information in the Power Adjustment Chart on page 4.
- Mount Closer to Door.** Drop plate first, if used. Place end with "S" and "L" valves toward the lock edge of the door. (Slip clips for optional full metal cover, under closer feet, if this cover is used.)



- Mount Arm to Frame.** Fasten soffit plate (or 589L angle bracket if flush partition) to frame. Mount 6190 bracket or 6191 clamps to reinforce soffit plate. Or fasten 589L bracket to frame and then soffit plate to 589L bracket.
- Install Arm on Pinion Shaft.** Close valves "S" and "L". Rotate pinion over 45° to align main arm letter "R" (right hand) or "L" (left hand) with pinion flat. Fasten with arm screw. See "Typical Installation" figure above right. Re-open valves "S" and "L".
- Adjust Closer.** Refer to "Adjustments" on page 4.
- Install Cover and Pinion Cap, if required.**
 - Full Cover:** Slide cover insert into the unused cut-out in cover. Install cover using screws provided.
 - Narrow Cover:** Install cover using screws provided. Install pinion cap onto pinion shaft by hand or with a Phillips screw driver - DO NOT OVER TIGHTEN.
 - Full Metal Cover:** Fasten cover to mounting clips with screws provided.
 - Metal Architectural Cover:** Remove cover insert where pinion is located. Install standoffs in ends of closer. Install cover using screws provided.
 - Plastic Architectural Cover:** Slide cover insert into the unused cutout in cover. Install standoffs in ends of closer. Snap cover over standoffs.

855-557-5078 x 2 • www.accentra-assaabloy.com

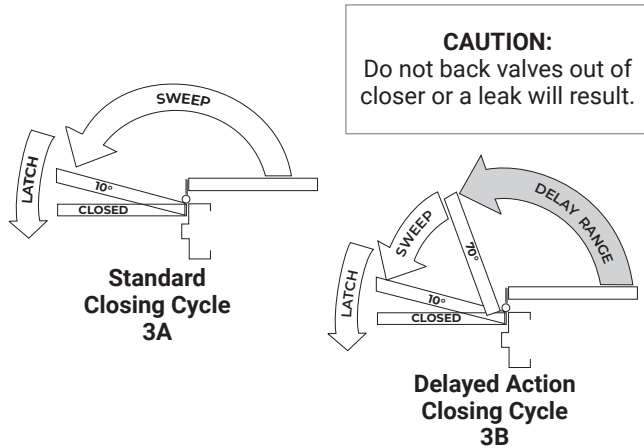
Copyright © 2007, 2008, 2024, ASSA ABLOY ACCENTRA™ Access and Egress Hardware Group, Inc. All rights reserved. Reproduction in whole or in part without the express written permission of ASSA ABLOY Access and Egress Hardware Group, Inc. is prohibited.

80-9303-2208-010 Rev 3 05/24

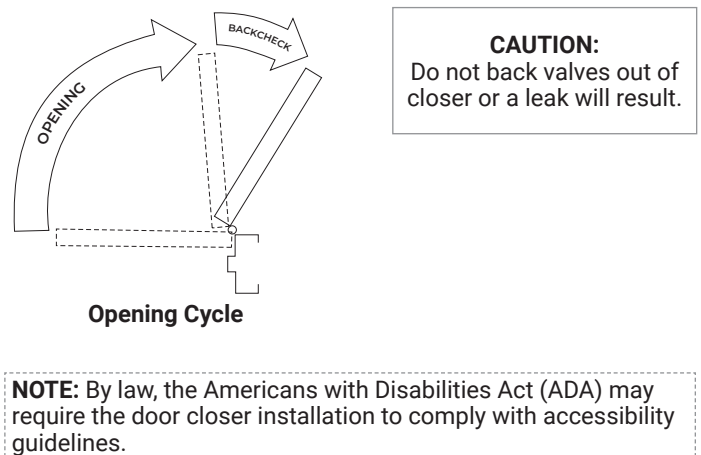
Experience a safer
and more open world

Adjustments

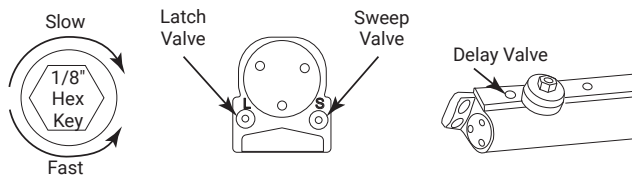
Closing Speed Controls



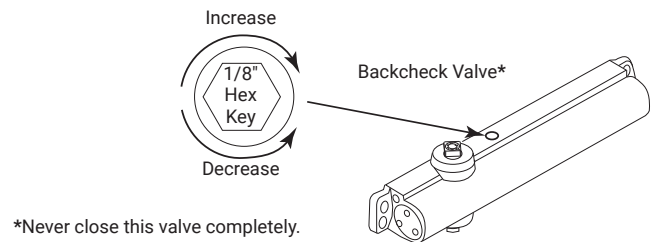
Opening Door Control



Closing Speed Controls



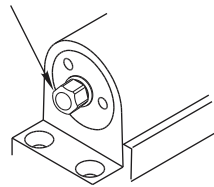
Backcheck Control



Closing Power Controls

Use 5/16" socket or adjustable wrench for adjustment

To increase power, turn Spring Adjustment shaft clockwise.
A total of twenty (20) 360° turns of the nut will provide maximum power.

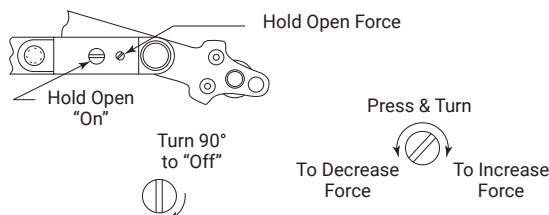


Power Adjustment Chart

DOOR	PARALLEL ARM INSTALLATION	*	MAXIMUM DOOR SIZE			
			28"-32" (70cm-80cm)	33"-41" (85cm-100cm)	42"-48" (105cm-120cm)	Max. # of turns
INT	UNI3301/ UNI3501	Full 360° turns of Power Adjustment Shaft	7	10	16	20
EXT			9	12	18	20

*Twenty (20) 360° Turns Maximum Available

Hold Open Option



The Hold Open option is found at the arm elbow.
To select hold open "on", hold open "off" or to adjust the hold open force, use a flat head screwdriver as illustrated.

Bracket Illustrations

