

2100 SERIES

Economy Exit Devices Parts Manual



TABLE OF CONTENTS

Finish Chart	2
Installation Notes	3
How to Order Parts	3
Exit Devices	
2100/2100F Rim	4
2150/2150F Squarebolt®	5
2110/2110F Surface Vertical Rod	6-7
2170/2170F Surface Vertical Rod	8-9
2170/2170F LBR Surface Vertical Rod (Less Bottom Rod)	10-11
2120/2120F Concealed Vertical Rod	12-13
2160/2160F Concealed Vertical Rod	14-15
2160/2160F LBR Concealed Vertical Rod (Less Bottom Rod)	16-17
2100 Bar Assembly	18
Strikes	19
Accessories	20
Handing Instructions	21-22
Vertical Rod Adjustment and Maintenance	22-23
Troubleshooting	24


Device Finishes

ANSI/BHMA Code	Finish Description
613E	Dark Oxidized Satin Bronze - Equivalent
630	Satin Stainless Steel
689	Aluminum Painted
691	Light Bronze Painted
693	Black Painted
695	Dark Bronze Painted
BSP	Black Suede Powder Coat



INTRODUCTION

Installation Notes

1. Only fire-rated components can be used on fire-rated exit devices. Doing otherwise will void any type of product warranty, labeling and listing. Any component bearing the UL mark for fire rating cannot be supplied separately and maintain its rating without re-certification. Reference items with  symbol.
2. Refer to the templates and installation instructions for complete door preparation and installation requirements.
3. Machine screws are provided for steel reinforced doors, threaded-to-the-head AB Type screws are provided for wood door applications. In addition, sex nuts and bolts are provided for fire-rated devices and are optional for non-rated devices. It is recommended that sex nuts and bolts be used for all exit device applications. This will improve the performance and extend the life of the product.

How to Order Parts

1. In order to simplify the ordering procedure and maintain regulatory compliance, parts are only available as listed.
2. To order parts, provide the appropriate quantity, part number, finish, hand (when required) and description as directed and illustrated below.

For example, use the following configuration to order:

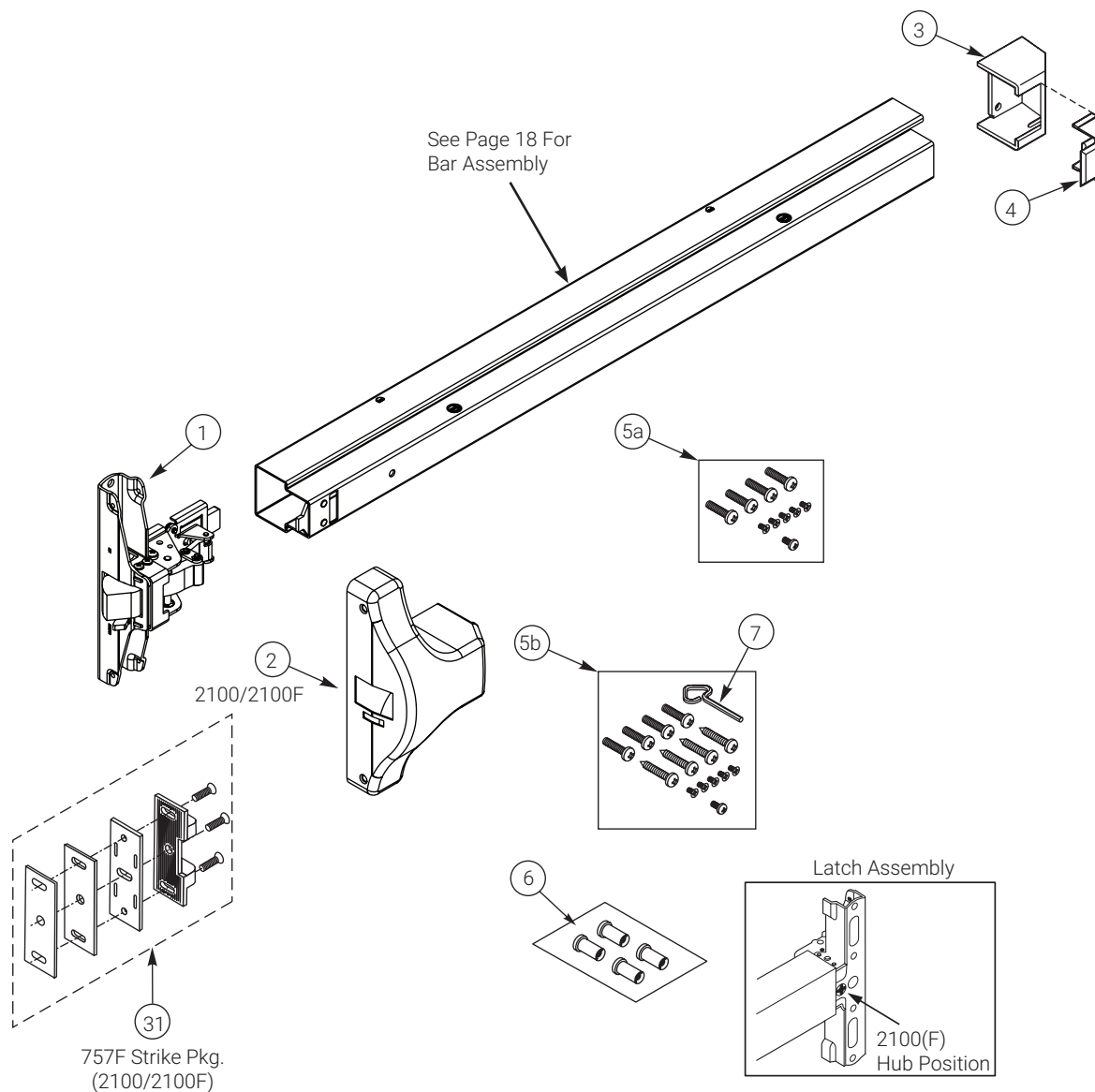
A) ten mullion stabilizer kits (page 19) to match 600 application (primed for painting)

B) one surface vertical rod latch cover (page 6) in bright brass

	Quantity	Part Number	Finish	Hand	Description
A	10	81-9500-1417-FIN	600	---	Stabilizer Kit
B	1	60-7010-X040-FIN	605	---	Top Latch Cover

For assistance, contact your authorized ASSA ABLOY ACCENTRA™ distributor or sales agency, or visit our website at www.accentra-assaabloy.com.

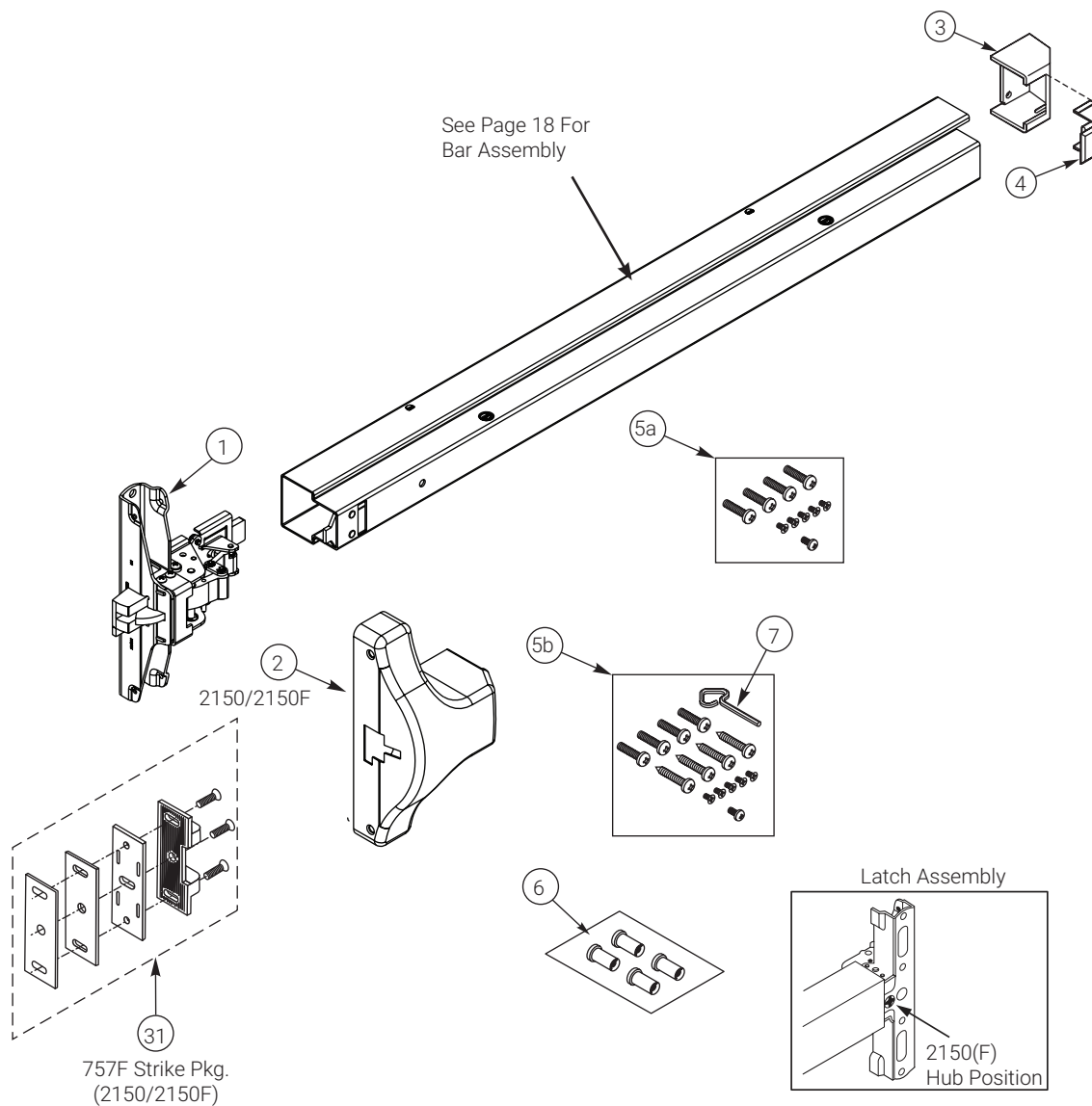
2100/2100F RIM



ITEM	PART NO.	DESCRIPTION
1	60-2100-0010-048 60-2100-0011-048	Latch Assembly 2100 2100F
2	60-2000-X231-FIN 60-2000-1241-FIN Not Available	Cover 2100 (std.) 2100 (opt. Wide) 2100F
3	60-2000-6179-FIN	Bottom End Cap
4	60-2000-6178-FIN	Top End Cap

ITEM	PART NO.	DESCRIPTION
5a	81-9500-1376-FIN	Mtg. Screw Pack (2100F)
5b	81-9500-1395-FIN	Mtg. Screw Pack (2100)
6	03-0080-5047-FIN	Sex Nut Pack (4) (2 Packs) Fire Rated Only
7	60-7000-1131-036	Dogging Key
31	81-9800-0001-999	757F Strike Packet (2100/2100F)

2150/2150F SQUAREBOLT®



ITEM	PART NO.	DESCRIPTION
1	60-2150-0010-048	Latch Assembly 2150 2150F
2	60-2150-X234-FIN 60-2150-1244-FIN Not Available	Cover 2150 (std.) 2150 (opt. Wide) 2150F
3	60-2000-6179-FIN	Bottom End Cap
4	60-2000-6178-FIN	Top End Cap

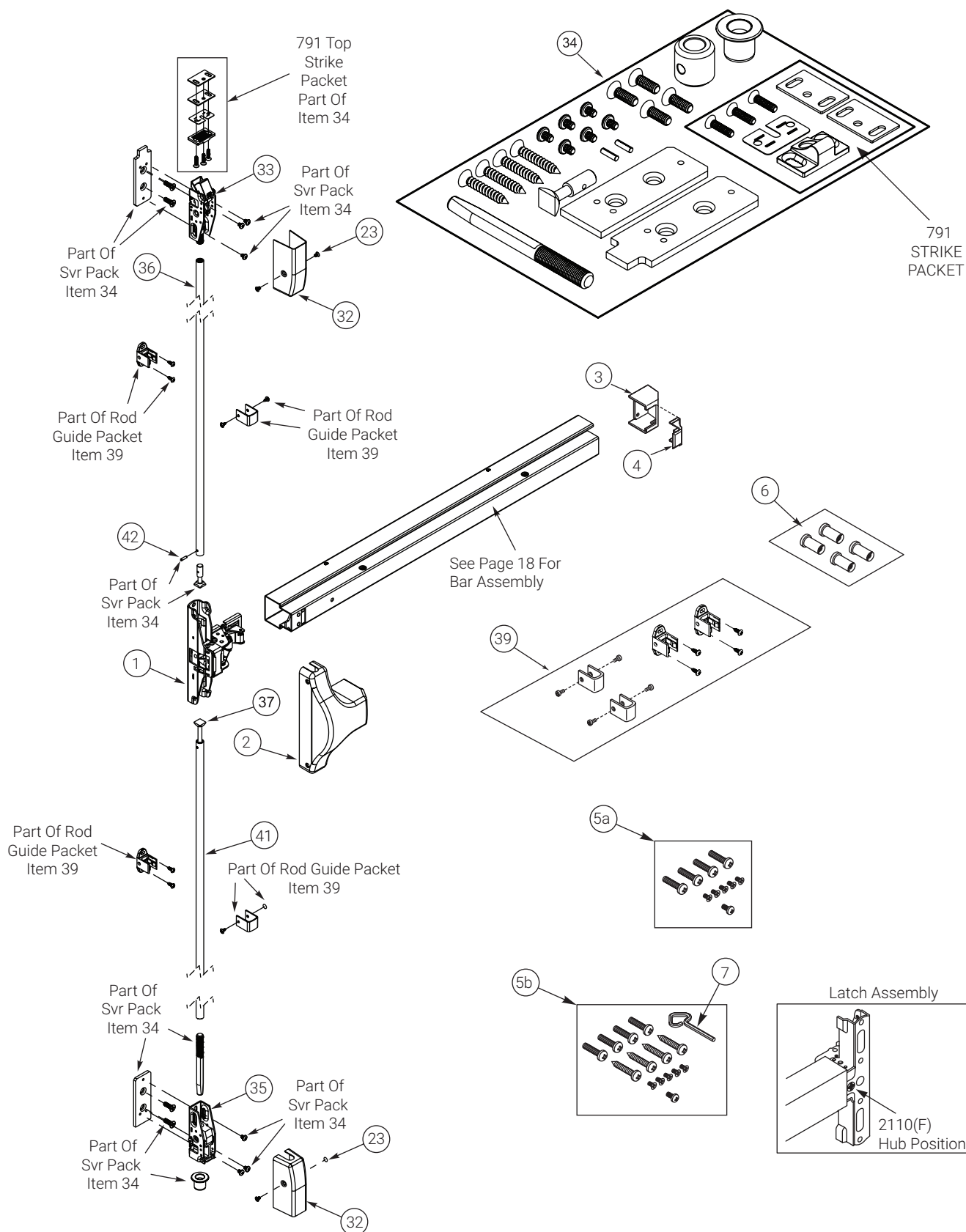
ITEM	PART NO.	DESCRIPTION
5a	81-9500-1376-FIN	Mtg. Screw Pack (2150F)
5b	81-9500-1395-FIN	Mtg. Screw Pack (2150)
6	03-0080-5047-FIN	Sex Nut Pack (4) (2 Packs) Fire Rated Only
7	60-7000-1131-036	Dogging Key
31	81-9500-1683-200	757F Strike Packet (2150/2150F)

2110/2110F SURFACE VERTICAL ROD

ITEM	PART NO.	DESCRIPTION
1	60-2110-0002-048 (LH) 60-2110-0003-048 (RH)	Latch Assembly 2110, 2110F (Must Specify Hand)
2	60-2110-X233-FIN 60-2110-1243-FIN Not Available	Cover 2110 (std.) 2110 (opt. Wide) 2110F
3	60-2000-6179-FIN	Bottom End Cap
4	60-2000-6178-FIN	Top End Cap
5a	81-9500-1376-059-FIN	Mtg. Screw Pack (2110F)
5b	81-9500-1395-059-FIN	Mtg. Screw Pack (2110)
6	03-0080-5047-FIN	Sex Nut Pack (4) (2 packs) Fire Rated Only
7	60-7000-1131-036	Dogging Key
23	81-9500-1549-FIN	Screw Packet, Cover #8-32 x 5/16" UFPHMS (4)
32	60-7010-X040-FIN	Cover, Top & Bottom Latch

ITEM	PART NO.	DESCRIPTION
33	60-7010-0049-999 60-7010-0050-999	Top Latch 2110 2110F
34	81-9500-1512-000 60-7010-1038-048 60-7010-1039-048 60-7010-1067-048 99-9999-4308-999 60-7000-1150-999 60-7020-1073-029 60-7020-0050-000 81-9500-1546-000 81-9500-1454-200	SVR Pack Consists of the following: Top Mtg. Plate Bottom Mtg. Plate Top Rod Connector Spring Pin (2) Drill Jig Floor Bolt Bottom Strike Latch Mounting Screw Packet 791 Top Strike Packet
35	60-7010-0054-000 60-7010-0053-000	Bottom Bolt Case 2110 2110F
36	60-2110-7006-FIN	Top Rod
37	60-7010-1025-059	Bottom Rod Connector
39	81-9500-1514-FIN	Rod Guide Packet
41	60-2110-7007-FIN	Bottom Rod
42	99-9999-4308-999	Spring Pin

2110/2110F SURFACE VERTICAL ROD

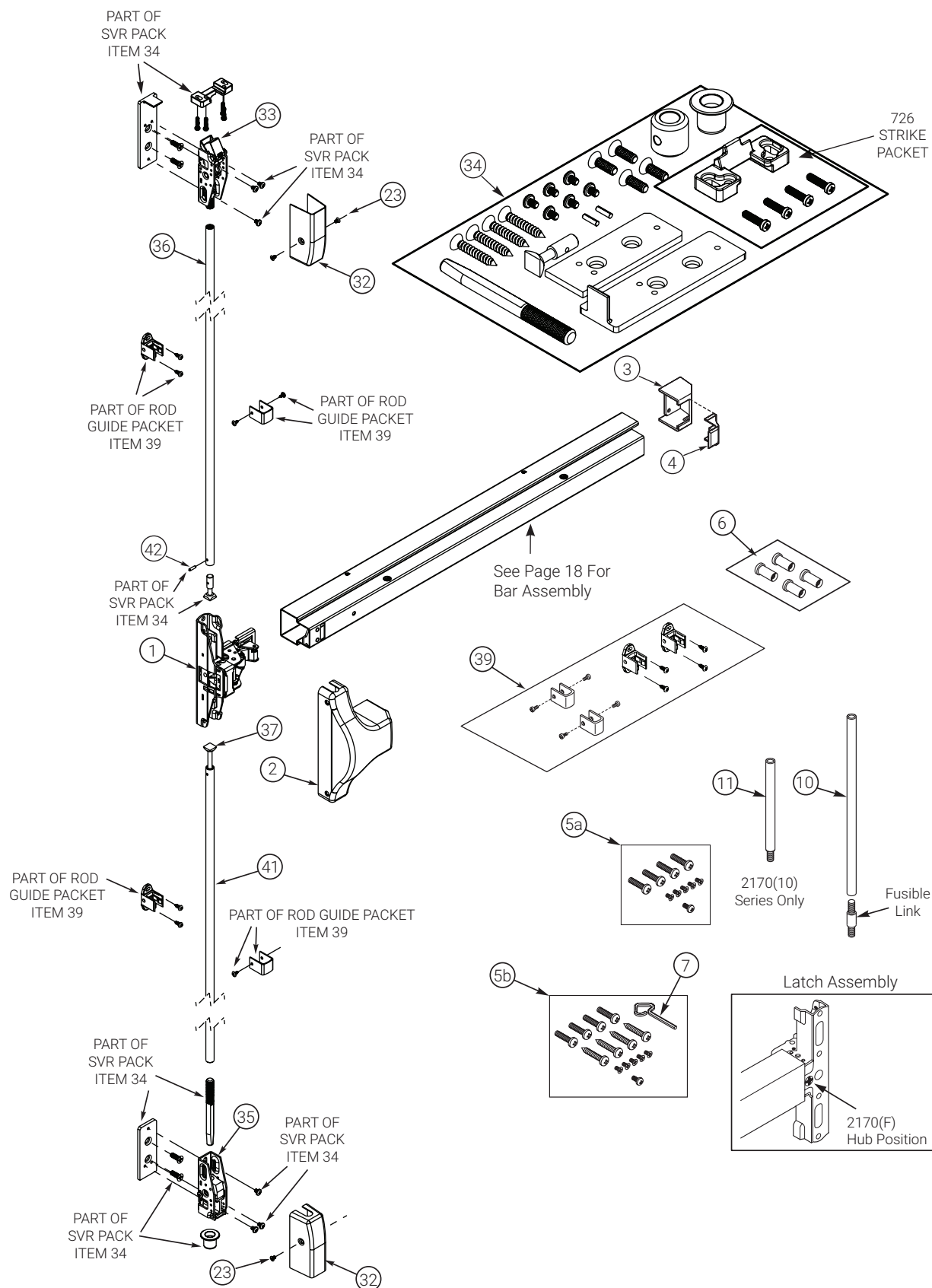


2170/2170F SURFACE VERTICAL ROD

ITEM	PART NO.	DESCRIPTION
1	60-2110-0002-048 (LH) 60-2110-0003-048 (RH)	Latch Assembly 2170, 2170F (Must Specify Hand)
2	60-2110-X233-FIN 60-2110-1243-FIN Not Available	Cover 2170 (std.) 2170 (opt. Wide) 2170F
3	60-2000-6179-FIN	Bottom End Cap
4	60-2000-6178-FIN	Top End Cap
5a	81-9500-1376-FIN	Mtg. Screw Pack (2170F)
5b	81-9500-1395-FIN	Mtg. Screw Pack (2170)
6	03-0080-5047-FIN	Sex Nut Pack (4) (2 packs) Fire Rated Only
7	60-7000-1131-036	Dogging Key
10	60-1510-0281-FIN	Rod Extension Assy., 24" (-9 & -10 Devices)
11	60-1510-0278-FIN	Rod Extension Assy., 12" (-8 & -10 Devices)
23	81-9500-1549-FIN	Screw Packet, Cover #8-32 x 5/16" UFPHMS (4)
32	60-7010-X040-FIN	Cover, Top & Bottom Latch

ITEM	PART NO.	DESCRIPTION
33	60-7010-0049-999 60-7010-0050-999	Top Latch 2170 2170F
34	81-9500-1610-000 60-7110-1005-048 60-7010-1039-048 60-7010-1067-048 99-9999-4308-999 60-7000-1150-999 60-7020-1073-029 60-7020-0050-000 81-9500-1613-000 81-9500-1576-000	SVR Pack Consists of the following: Top Angle Mtg. Plate Bottom Mtg. Plate Top Rod Connector Rod Connecting Pin Drill Jig Floor Bolt Bottom Strike Latch Mounting Screw Pack 726 Top Strike Packet
35	60-7010-0054-000 60-7010-0053-000	Bottom Bolt Case 2170 2170F
36	60-2110-7006-FIN	Top Rod
37	60-7010-1025-059	Bottom Rod Connector
39	81-9500-1514-FIN	Rod Guide Packet
41	60-2110-7007-FIN	Bottom Rod
42	99-9999-4308-999	Spring Pin

2170/2170F SURFACE VERTICAL ROD

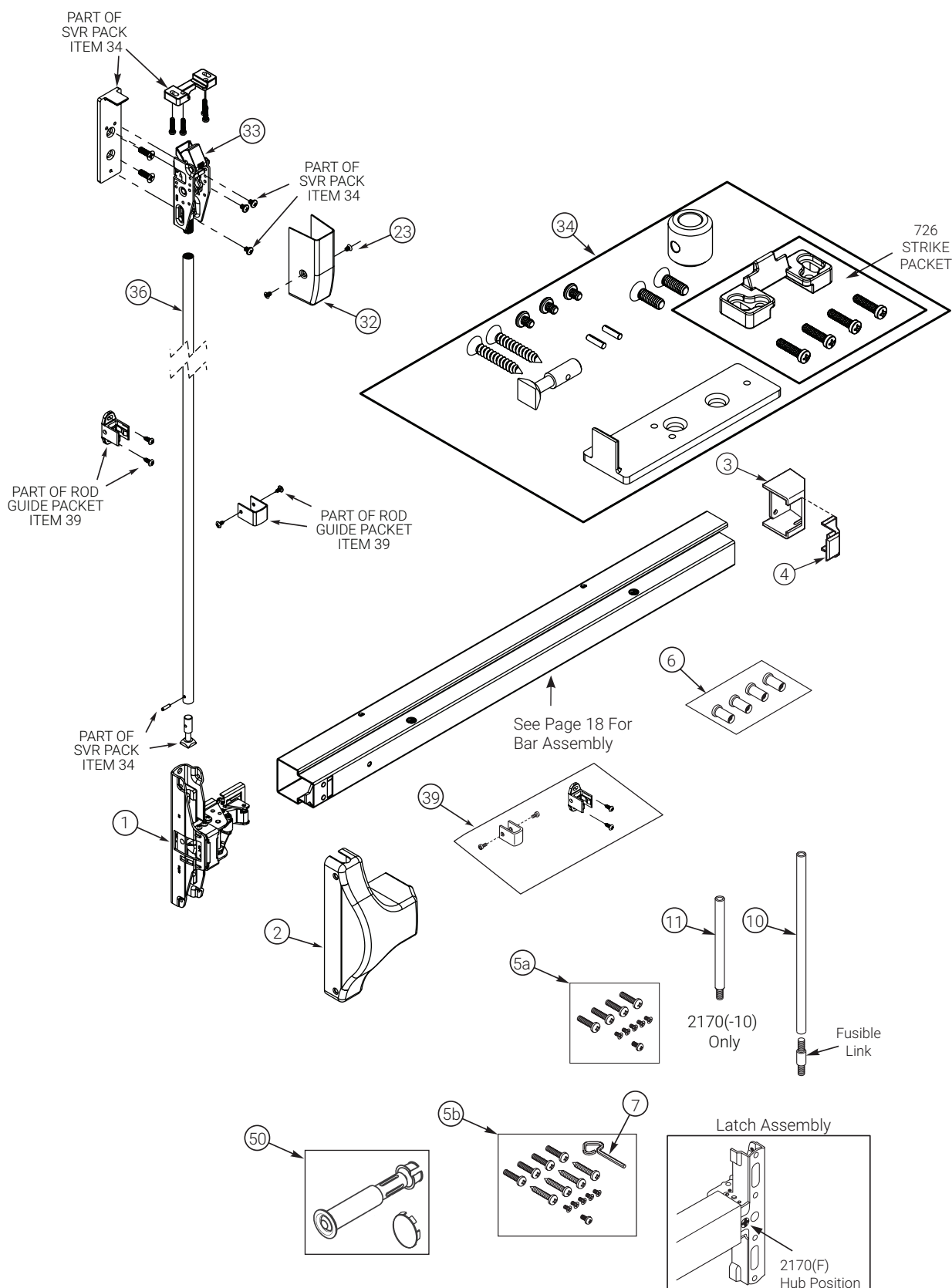


2170/2170F LBR SURFACE VERTICAL ROD (LESS BOTTOM ROD)

ITEM	PART NO.	DESCRIPTION
1	60-2110-0002-048 (LH) 60-2110-0003-048 (RH)	Latch Assembly 2170, 2170F (Must Specify Hand)
2	60-2110-X233-FIN 60-2110-1243-FIN Not Available	Cover 2170 (std.) 2170 (opt. Wide) 2170F
3	60-2000-6179-FIN	Bottom End Cap
4	60-2000-6178-FIN	Top End Cap
5a	81-9500-1376-FIN	Mtg. Screw Pack (2170F)
5b	81-9500-1395-FIN	Mtg. Screw Pack (2170)
6	03-0080-5047-FIN	Sex Nut Pack (4) Fire Rated Only
7	60-7000-1131-036	Dogging Key
10	60-1510-0281-FIN	Rod Extension Assy., 24" (-9 & -10 Devices)
11	60-1510-0278-FIN	Rod Extension Assy., 12" (-8 & -10 Devices)

ITEM	PART NO.	DESCRIPTION
23	81-9500-1549-FIN	Screw Packet, Cover #8-32 x 5/16" UFPHMS (4)
32	60-7010-X040-FIN	Cover, Top Latch
33	60-7010-0049-999 60-7010-0050-999	Top Latch 2170 2170F
34	81-9500-1562-000 60-7110-1005-048 60-7010-1067-048 99-9999-4308-999 60-7000-1150-999 81-9500-1613-000 81-9500-1576-000	SVR Pack Consists of the following: Top Angle Mtg. Plate Top Rod Connector Rod Connecting Pin Drill Jig Latch Mounting Screw Pack 726 Top Strike Packet
36	60-2110-7006-FIN	Top Rod
39	81-9500-1514-FIN	Rod Guide Packet
50	60-7110-0002-999	Popper Packet (2170F only)

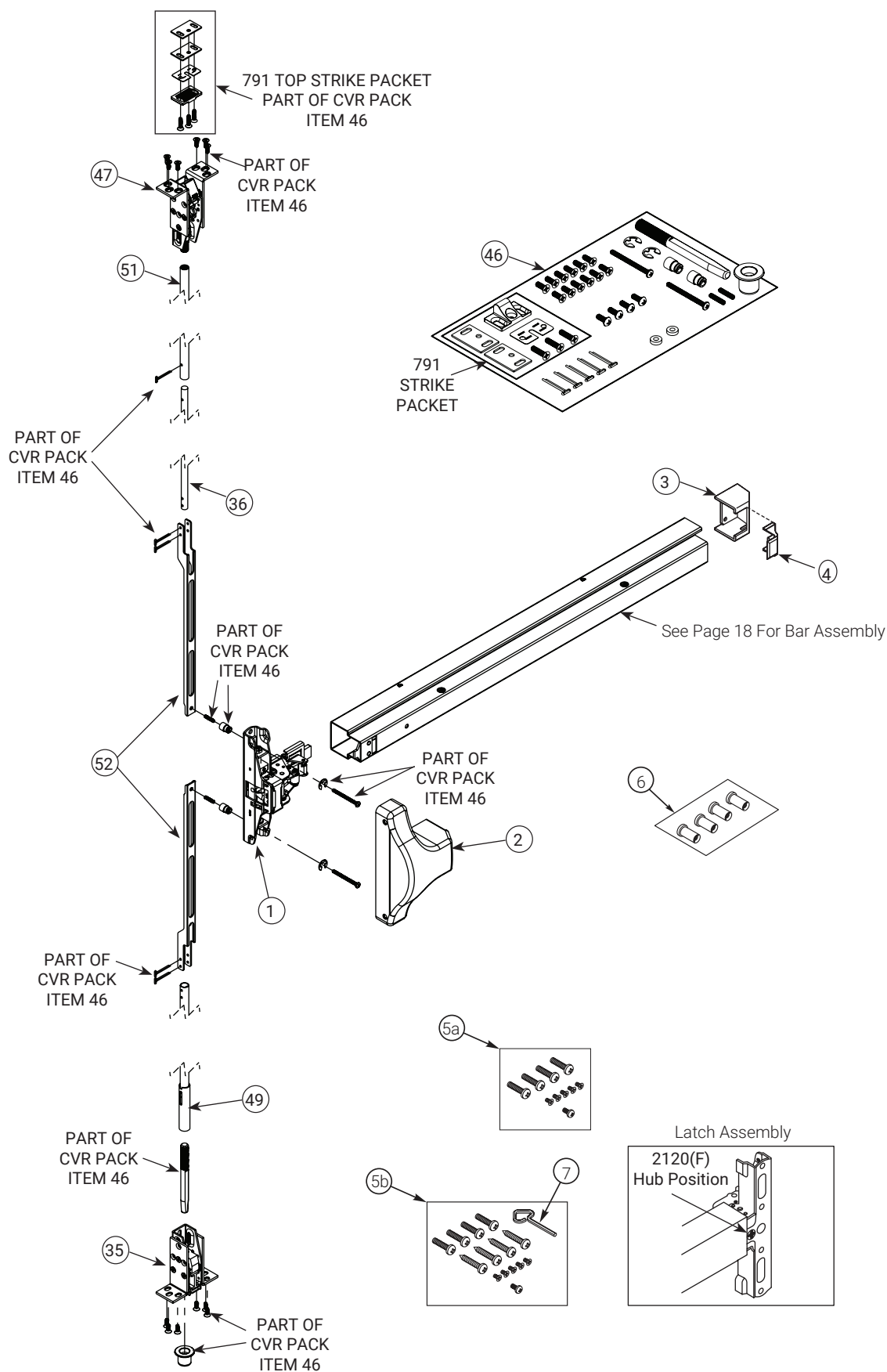
2170/2170F LBR SURFACE VERTICAL ROD (LESS BOTTOM ROD)



2120/2120F CONCEALED VERTICAL ROD

ITEM	PART NO.	DESCRIPTION
1	60-2120-0001-048 (LH) 60-2120-0003-048 (RH)	Latch Assembly 2120, 2120F (Must Specify Hand)
2	60-2000-1230-FIN 60-2000-1240-FIN Not Available	Cover 2120 (std.) 2120 (opt. Wide) 2120F
3	60-2000-6179-FIN	Bottom End Cap
4	60-2000-6178-FIN	Top End Cap
5a	81-9500-1376-FIN	Mtg. Screw Pack (2120F)
5b	81-9500-1395-FIN	Mtg. Screw Pack (2120)
6	03-0080-5047-FIN	Sex Nut Pack (4) Fire Rated Only
7	60-7000-1131-036	Dogging Key
35	60-7020-0055-048	Bottom Bolt Case
36	60-7220-1019-059	Top Rod
46	81-9500-1456-000 60-7020-1073-029 60-7020-0050-000 81-9500-1454-200 60-7120-1047-048 60-7140-1026-059 60-7020-1064-059 99-9958-0045-999 99-9999-4526-999 81-0014-0430-036 81-9500-1548-058	CVR Pack Consists of the following: Floor Bolt Bottom Strike 791 Top Strike Pack Rod Yoke Pin (2) Yoke Pin Set Screw Yoke Pin Spacer (2) Cotter Pin (5) Retaining Ring (2) 2" Temp Screw (2) Screw Pack
47	60-7020-0060-000	Top Latch & Bracket Assembly
49	60-7020-0056-048	Bottom Rod & Coupler Assembly
51	60-7220-7025-000	Top Rod Tube
52	60-7220-0030-999	Arm & Bracket Assembly (2)

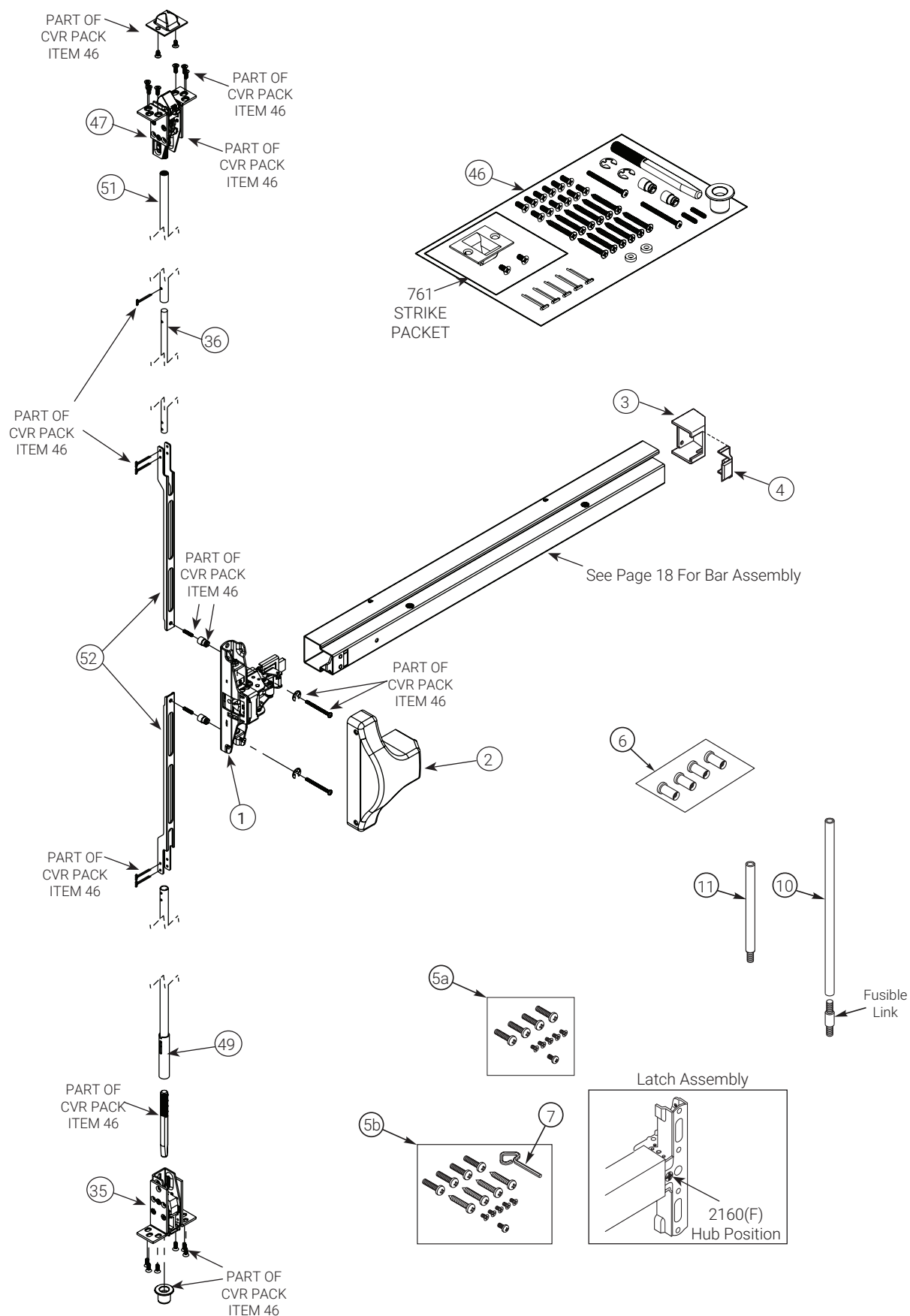
2120/2120F CONCEALED VERTICAL ROD



2160/2160F CONCEALED VERTICAL ROD

ITEM	PART NO.	DESCRIPTION
1	60-2120-0001-048 (LH) 60-2120-0003-048 (RH)	Latch Assembly 2160, 2160F (Must Specify Hand)
2	60-2000-1230-FIN 60-2000-1240-FIN Not Available	Cover 2160 (std.) 2160 (opt. Wide) 2160F
3	60-2000-6179-FIN	Bottom End Cap
4	60-2000-6178-FIN	Top End Cap
5a	81-9500-1376-FIN	Mtg. Screw Pack (2160F)
5b	81-9500-1395-FIN	Mtg. Screw Pack (2160)
6	03-0080-5047-FIN	Sex Nut Pack (4) Fire Rated Only
7	60-7000-1131-036	Dogging Key
10	60-1510-0281-FIN	Rod Extension Assy., 24" (-10 Device Only)
11	60-1510-0278-FIN	Rod Extension Assy., 12" (-9 Device Only)
35	60-7020-0055-048	Bottom Bolt Case
36	60-7220-1019-059	Top Rod
46	81-9500-1581-000 60-7020-1073-029 60-7020-0050-000 81-9500-1696-000 60-7120-1047-048 60-7140-1026-059 60-7020-1064-059 99-9958-0045-999 99-9999-4526-999 81-0014-0430-036 81-9500-1580-058	CVR Pack Consists of the following: Floor Bolt Bottom Strike 761 Top Strike Pack Rod Yoke Pin (2) Yoke Pin Set Screw Yoke Pin Spacer (2) Cotter Pin (5) Retaining Ring (2) 2" Temp Screw (2) Screw Pack
47	60-7160-0060-000	Top Latch & Bracket Assembly
49	60-7020-0056-048	Bottom Rod & Coupler Assembly
51	60-7220-7025-000	Top Rod Tube
52	60-7220-0030-999	Arm & Bracket Assembly (2)

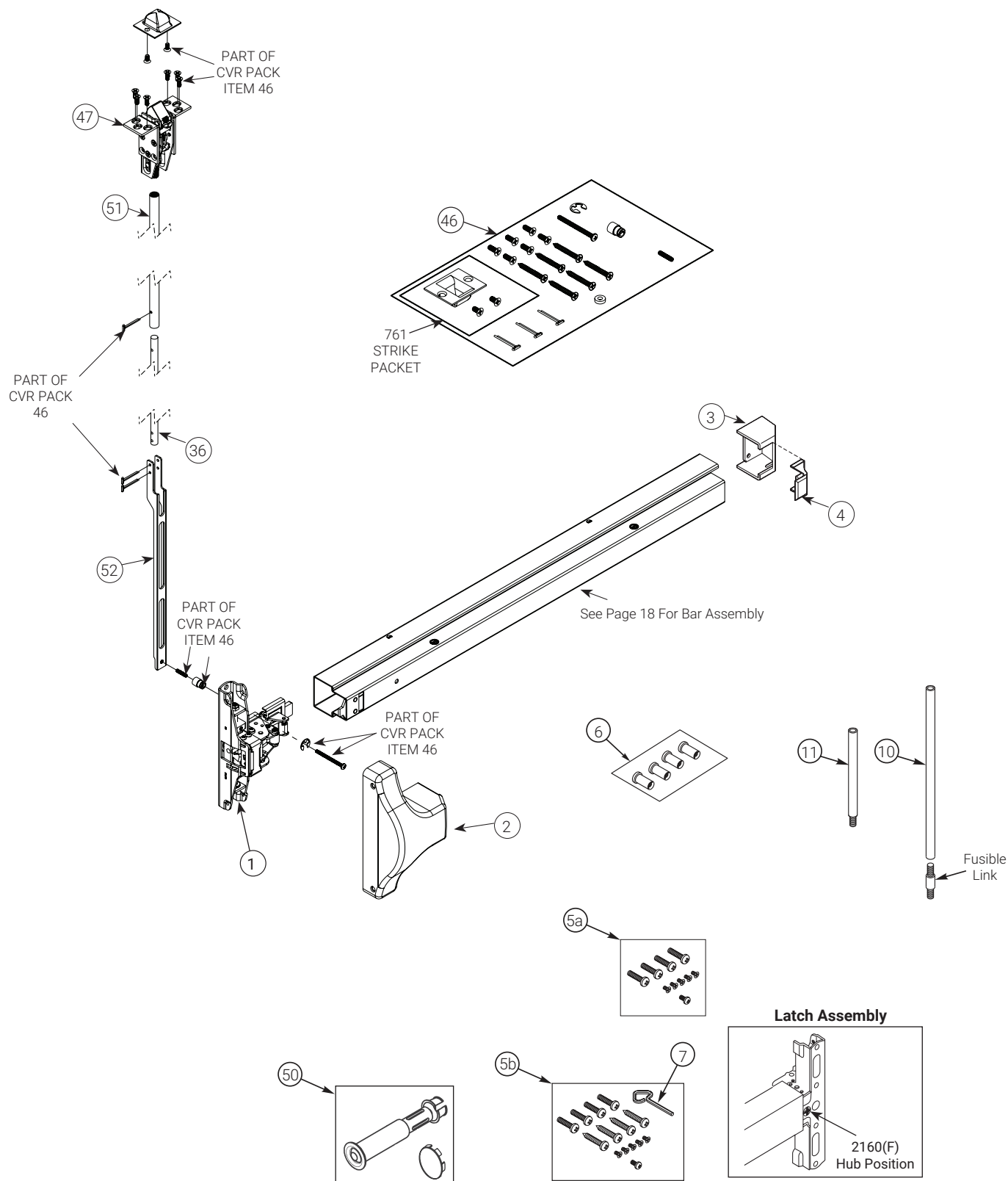
2160/2160F CONCEALED VERTICAL ROD



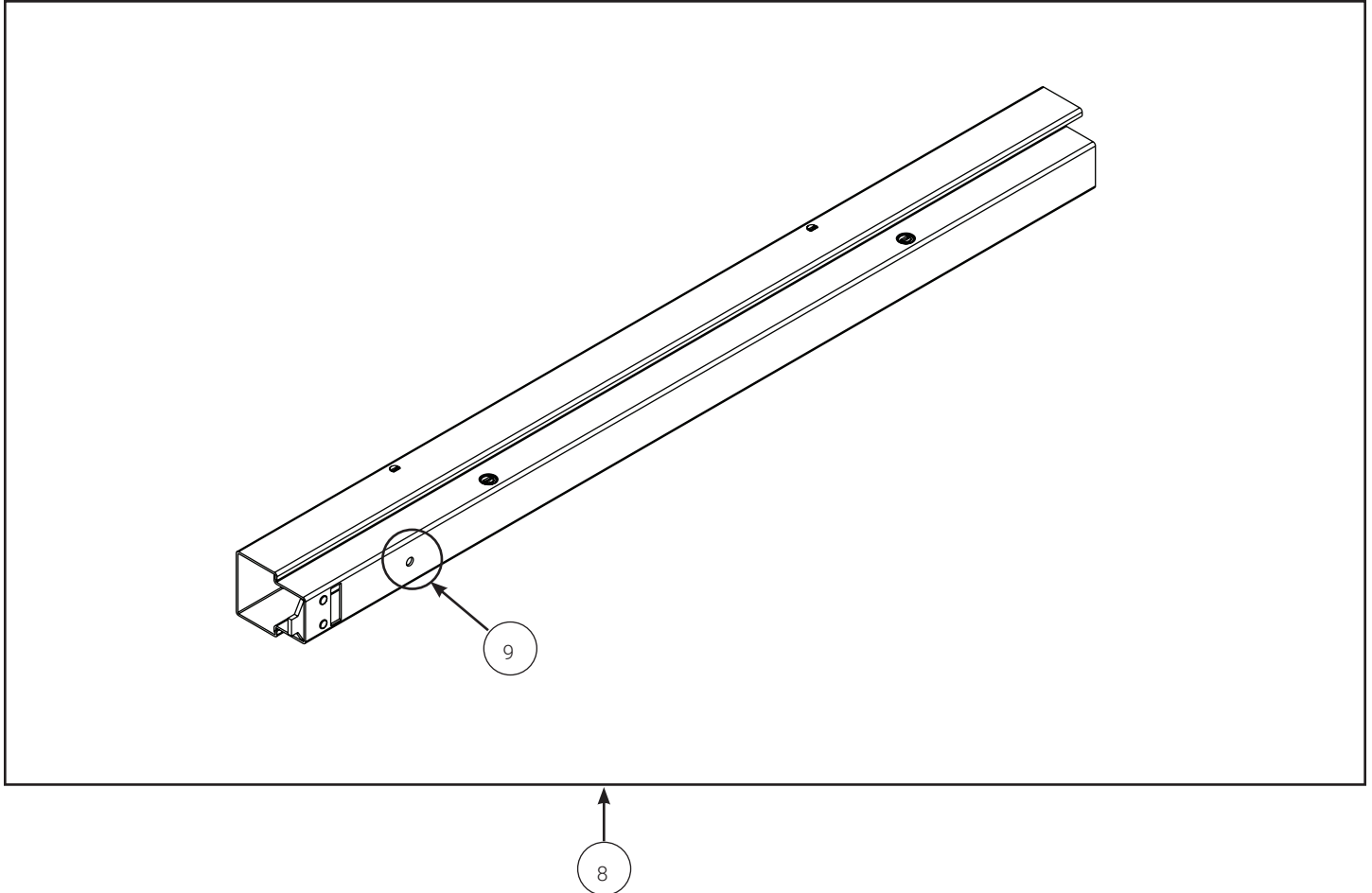
2160/2160F LBR CONCEALED VERTICAL ROD (LESS BOTTOM ROD)

ITEM	PART NO.	DESCRIPTION
1	60-2120-0001-048 (LH) 60-2120-0003-048 (RH)	Latch Assembly 2160, 2160F (Must Specify Hand)
2	60-2000-1230-FIN 60-2000-1240-FIN Not Available	Cover 2160 (std.) 2160 (opt. Wide) 2160F
3	60-2000-6179-FIN	Bottom End Cap
4	60-2000-6178-FIN	Top End Cap
5a	81-9500-1376-FIN	Mtg. Screw Pack (2160F)
5b	81-9500-1395-FIN	Mtg. Screw Pack (2160)
6	03-0080-5047-FIN	Sex Nut Pack (4) Fire Rated Only
7	60-7000-1131-036	Dogging Key
10	60-1510-0281-FIN	Rod Extension Assy., 24" (-10 Device Only)
11	60-1510-0278-FIN	Rod Extension Assy., 12" (-9 Device Only)
36	60-7220-1019-059	Top Rod
46	81-9500-1605-000 81-9500-1696-000 60-7120-1047-048 60-7140-1026-059 60-7020-1064-059 99-9958-0045-999 99-9999-4526-999 81-0014-0430-036 81-9500-1606-058	CVR Pack Consists of the following: 761 Top Strike Pack Rod Yoke Pin (1) Yoke Pin Set Screw Yoke Pin Spacer (1) Cotter Pin (3) Retaining Ring (1) 2" Temp Screw (1) Screw Pack
47	60-7160-0060-000	Top Latch & Bracket Assembly
50	60-7110-0002-999	Popper Packet (2160F only)
51	60-7220-7025-000	Top Rod Tube
52	60-7220-0030-999	Arm & Bracket Assembly (1)

2160/2160F LBR CONCEALED VERTICAL ROD (LESS BOTTOM ROD)



2100 BAR ASSEMBLY



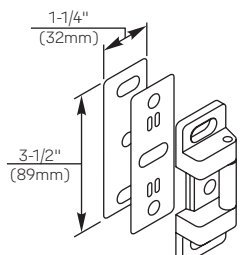
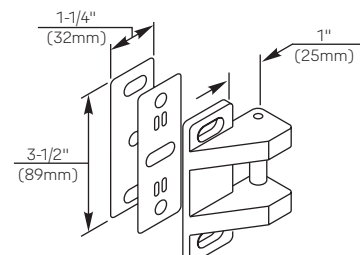
ITEM	PART NO.	DESCRIPTION
8	60-2100-0014-FIN	Dogging Bar Assembly, 36"
	60-2100-0015-FIN	Dogging Bar Assembly, 42"
	60-2100-0088-FIN	Dogging Bar Assembly, 48"
	60-2100-0008-FIN	Fire Rated Bar Assembly*, 36"
	60-2100-0009-FIN	Fire Rated Bar Assembly*, 42"
	60-2100-0087-FIN	Fire Rated Bar Assembly*, 48"

*Non-dogging

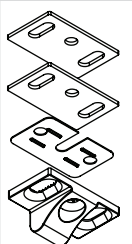
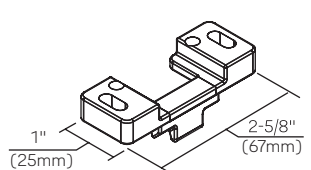
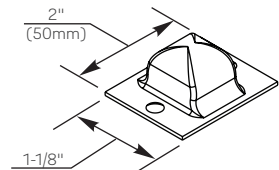
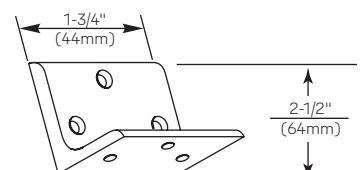
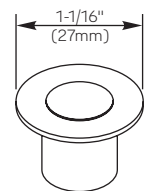
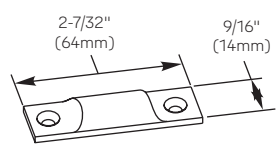
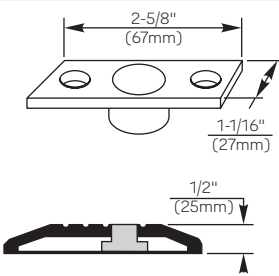
ITEM	PART NO.	DESCRIPTION
9	81-9500-1399-048	Dogging Kit (Consists of the following)
	60-2100-1001-999	Dogging Drive
	99-9999-7330-036	Wavy Washer
	60-2100-1007-048	Bushing
	81-3815-0412-036	Screw, Thread Forming Swage-Form/Trilobular or Equivalent Phillips Truss Head Machine 8-32 x 1/2"

STRIKES

Rim Devices

 <p>757F Standard 2100, 2100F, 2150, 2150F</p>	 <p>793 Optional strike for double door applications without a mullion on 2100</p>
--	---

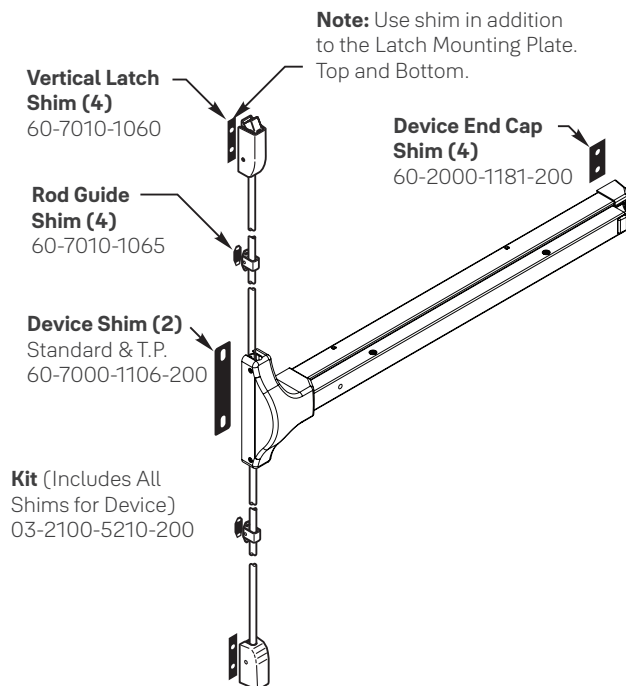
Vertical Rod Devices

 <p>791 Standard Top Strike 2110, 2110F 2120, 2120F</p>	 <p>726 Standard Top Strike on 2170, 2170F</p>	 <p>761 Standard Top Strike 2160, 2160F</p>	 <p>797 Bracket for SVR Top Strike in Flush Transom Opening on 2110F</p>
 <p>790 Standard Bottom Strike All Vertical Rod Devices</p>	 <p>702 Floor Strike for optional bottom Pullman Latch</p>	 <p>794 Optional Floor Strike for fire openings using saddle threshold, or flush floor mount. Must use for fire openings with thresholds.</p>	

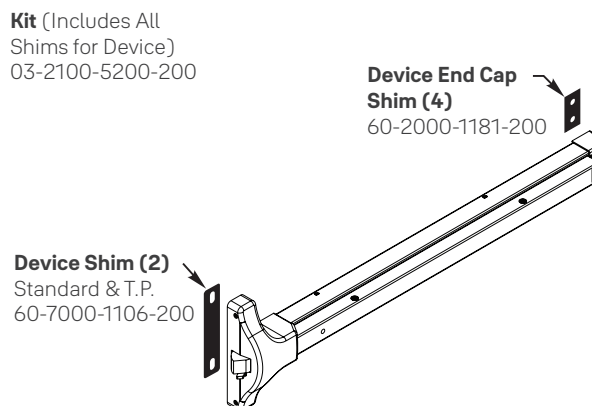
ACCESSORIES

Shim Kits

224 For 2110(F)/2170(F) Surface Vertical Rod Exit Devices

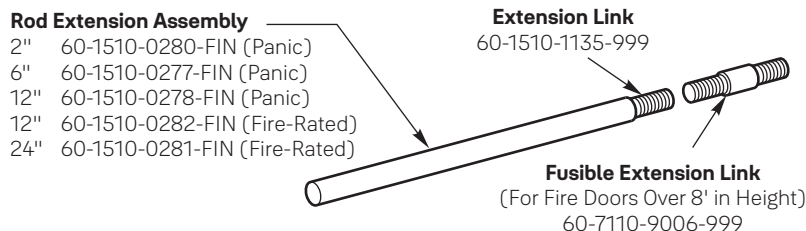


223 For 2100(F), 2150(F), 2120(F), 2160(F) Exit Devices

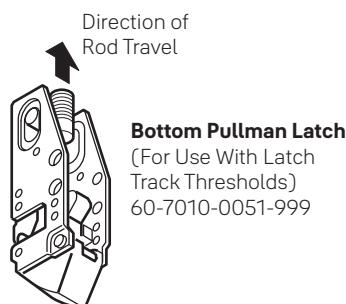


Surface and Concealed Vertical Rod Extension Kits

Used to extend the height of standard length rods for 2110(F)(8' max), 2120, 2160(F), 2170(F) Series exit devices.



Optional Vertical Latches



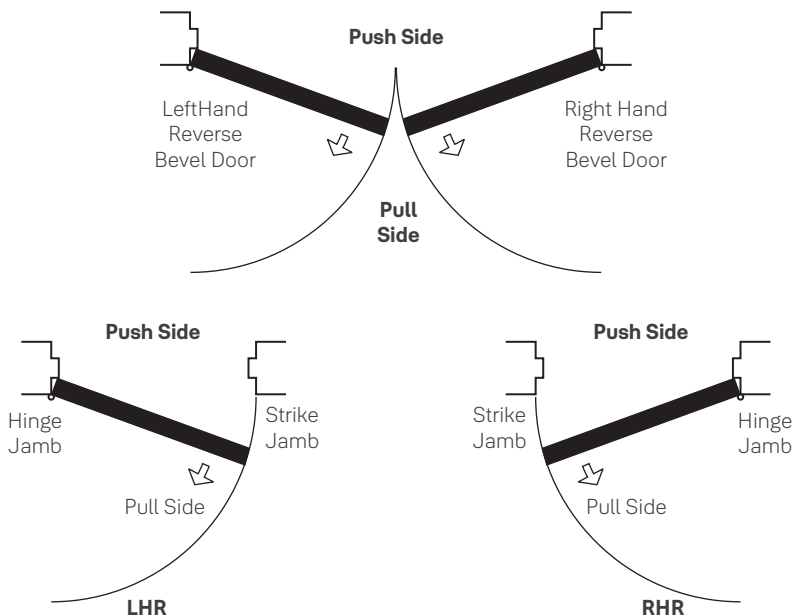
HANDING INSTRUCTIONS

Handing

Left Hand Reverse: Hinges on left, opens outward. For handed devices, specify LHR.

Right Hand Reverse: Hinges on right, opens outward. For handed devices, specify RHR.

Note: Doors with Panic-Exit and Fire Exit hardware must open out. Therefore, hands must be reverse bevel.

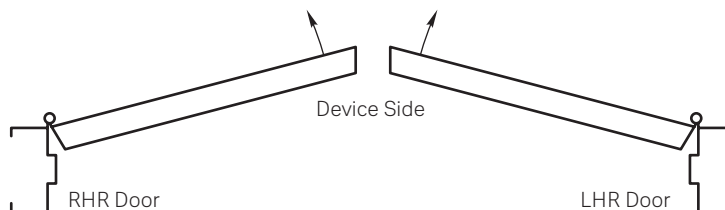


Rim Devices

2100/2100F

2150/2150F

These devices are non-handed.



Vertical Rod Devices

2110/2110F

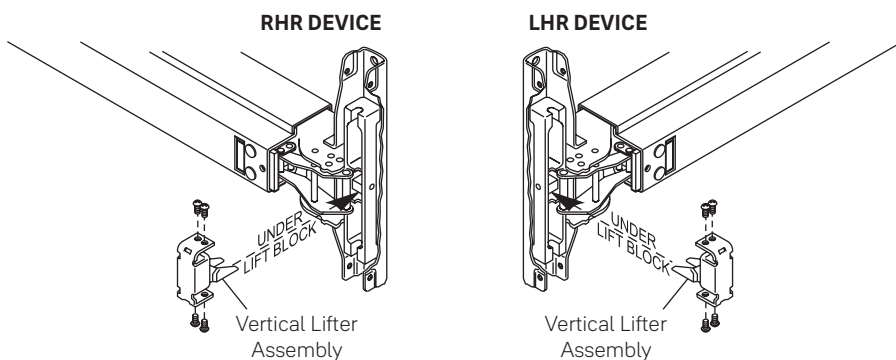
2170/2170F

2120/2120F

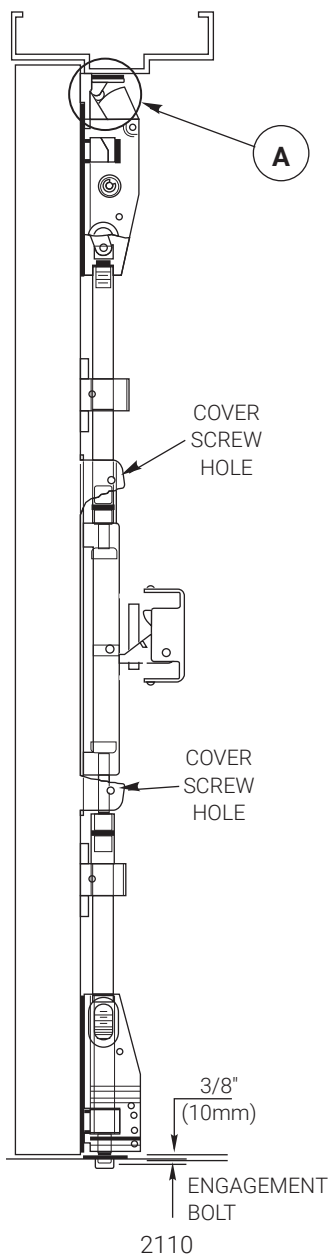
2160/2160F

Remove four screws and vertical lifter assembly. Turn device to opposite (180°) orientation, insert lifter assembly and reinstall screws.

NOTE: Lifter must fit under lift block as shown.



SURFACE VERTICAL ROD EXIT DEVICES



If top latch does not engage properly, check alignment. When locked, latch bolt should not be preloaded by strike (**Area A**). Shim or reposition strike if necessary. Bolts extend automatically when door closes and top strike hits tripping lever. Top bolt should retract flat. Bottom bolt should travel 1/2" and engage 3/8" into strike in down position, without dragging on floor surface in up position.

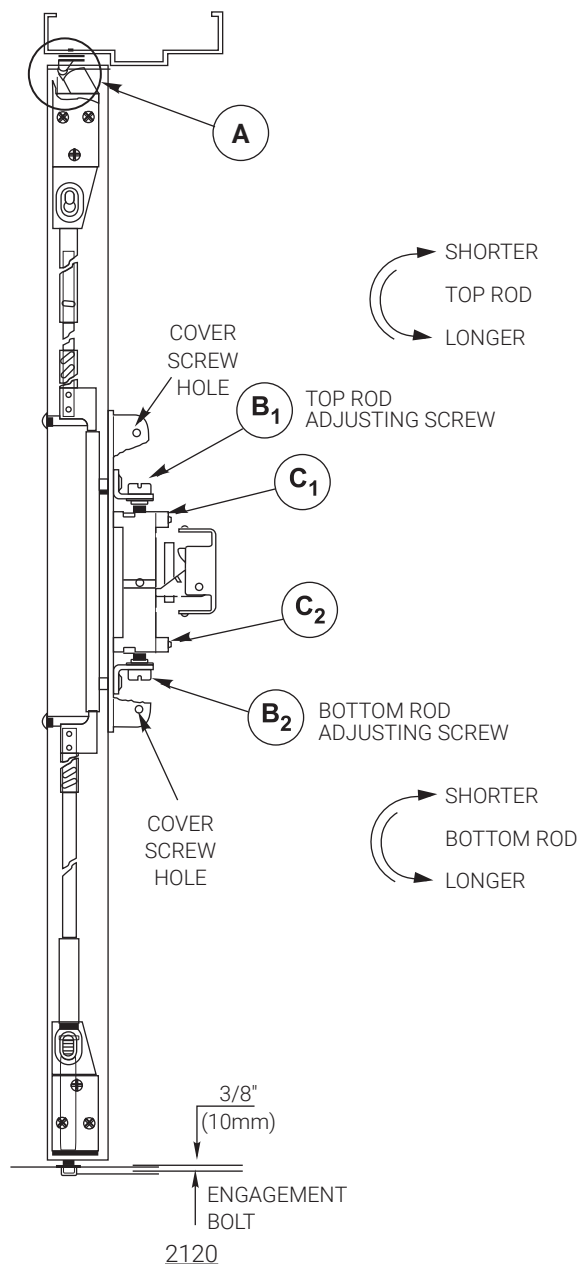
Rod Adjustment

1. Remove active case cover screws and cover.
2. Remove rod guide cover screws and rod guide covers. Tilt rods, top and bottom, out of engagement in active case and out of rod guides.
3. **Adjust top rod first.** Push up on top rod to fully retract top latch with hold back feature engaged. With device in dogged position (panic devices) or touch-bar fully depressed (fire devices), adjust top rod so that the square head of the rod connector slides into engagement in the active case. Shorten rod an additional 1/2 turn.
4. **Adjust bottom rod.** With top rod engaged, top latch retracted in hold back position, and touch bar dogged or fully depressed, adjust bottom rod so that the deadbolt clears the strike by 1/16". The bottom rod should be in position in the active case with the square head of the connector hanging in the slide.
5. **Check device operation** by opening and closing the door. When present, operate the device with the outside trim. An additional minor adjustment may be required for full retraction and correct strike engagement.
6. Reinstall the rod guide covers and the active case cover.

Maintenance

1. Periodically remove covers and coat mechanisms with an appropriate lubricant. This is regularly required in corrosive environments for proper product operation.
2. Check mounting fasteners periodically. Retighten if found loose. Apply screw locking compound or change part fasteners if screws continue to back out.
3. Periodic checks and adjustments of rods may be required to compensate for door or frame sag.

CONCEALED VERTICAL ROD EXIT DEVICES



Rods should move freely inside door. Bolts extend automatically when door closes and top strike is tripped. Top bolt should retract flat. Bottom bolt should travel 1/2" and engage 3/8" into strike in down position, without dragging on floor surface in up position.

If top latch does not engage properly check alignment. When locked, latch bolt should not be preloaded by strike (Area A). Shim or reposition strike if necessary.

Rod Adjustment for Bolt Throw

1. Remove Latch assembly cover screws and cover.
2. Use 3/32" Allen wrench to loosen set screws **C₁** and **C₂**.
3. Adjusting screws **B₁** and **B₂** only provide fine rod adjustment. If screws bottom out before proper device operation, door and device must be removed. Larger adjustments may then be made either by threading rod in or out, or by moving cotter pin to different hole in rod.
4. **Adjust top rod first.** With device in dogged position (panic devices) or touchbar fully depressed (fire devices), adjust top rod so that the top latchbolt is flush and the hold back feature is engaged. Lengthen top rod an additional 1/2 turn.
5. **Adjust bottom rod.** With top latch retracted in hold back position, and touch bar dogged or fully depressed, adjust bottom rod so that the deadbolt clears the strike by 1/16". The bottom rod should be in position in the active case with the square head of the connector hanging in the slide.
6. **Check device operation** by opening and closing the door. When present, operate the device with the outside trim. An additional minor adjustment may be required for full retraction and correct strike engagement.
7. When finished, lock adjusting screws in place with Allen set screws.

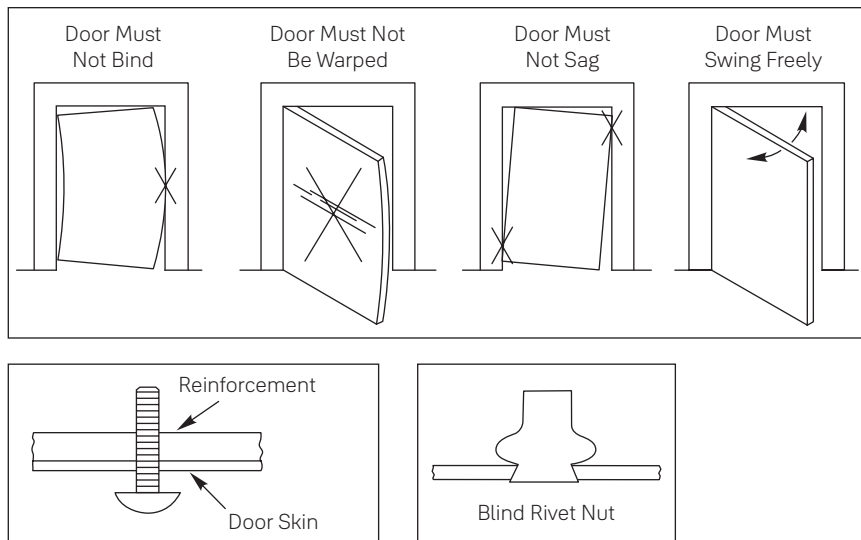
Caution: To avoid thread damage and provide positive locking, be sure Allen set screws engage flats on adjusting screws.

Maintenance

1. Periodically remove covers and coat exposed mechanisms with an appropriate lubricant. This is regularly required in corrosive environments for proper product operation.
2. Check mounting fasteners periodically. Retighten if found loose. Apply screw locking compound or change part fasteners if screws continue to back out.
3. Periodic checks and adjustments of rods may be required to compensate for door or frame sag.

TROUBLESHOOTING

1. Many problems with the operation of exit devices are caused by factors other than the device itself. Among the most common is a misalignment or an improper fit of the door within the frame.
2. Another common source of problems is improper installation. Even if all cutouts and screw holes are properly located, exit devices must be securely fastened to properly reinforced doors. Hollow doors and frames with a structural thickness (metal skin plus reinforcement, or solid hardwood) must have at least three full screw threads to be considered reinforced.
3. Most problems with dogging occur on vertical rod devices. When the dogging function is hard to engage or will not work at all, the rods may be incorrectly adjusted, allowing the mechanism to bottom out. Readjust rods per the device instructions or as outlined on the previous pages.



NOTES

The ASSA ABLOY Group is the global leader in access solutions.
Every day, we help billions of people experience a more open world.

ASSA ABLOY Opening Solutions leads the development within door openings and products for access solutions in homes, businesses and institutions. Our offering includes doors, frames, door and window hardware, mechanical and smart locks, access control and service.

ACCENTRA
ASSA ABLOY

TECHNICAL SUPPORT

(troubleshooting, product use and application, returns)
Tel: 855-557-5078
Email: techsupport.accentra@assaabloy.com

CUSTOMER SUPPORT

(orders, product configuration, pricing, lead-time)
Tel: 855-557-5078 x2
Email: Customerservice.Accentra@assaabloy.com

WARNING

This product can expose you to lead which is known to the state of California to cause cancer and birth defects or other reproductive harm. For more information go to www.P65warnings.ca.gov.

U.S.A.:
ASSA ABLOY ACCENTRA™
225 Episcopal Road
Berlin, CT 06037-4004
Tel: 1-800-438-1951
Fax: 1-800-338-0965
www.accentra-assaabloy.com

Canada:
ASSA ABLOY Door Security Solutions Canada
160 Four Valley Drive
Vaughan, Ontario L4K 4T9
Tel: 1-800-461-3007
Fax: 1-800-461-8989
assaabloydss.ca

International:
ASSA ABLOY Americas International
Tel: 1-905-821-7775
Fax: 1-905-821-1429
assaabloyai.com