

**ACCENTRA®**

**ASSA ABLOY**

Experience a safer  
and more open world

# YDC200 SERIES

## Economy Door Closer



## TABLE OF CONTENTS

### Contents

<a href="#">Features &amp; Benefits</a>	<a href="#">3</a>
<a href="#">How to Order</a>	<a href="#">4</a>
<a href="#">Dimensions and Applications</a>	<a href="#">5</a>

### YDC200 Economy Door Closer

ASSA ABLOY ACCENTRA® YDC200 Series Economy Door Closer is a no-fuss, affordable option for aluminum storefront settings and other high volume applications. Certified to meet ANSI/BHMA A156.4, Grade 1, YDC200 Series Door Closers provide a trusty and reliable solution to your commercial space, including retail, office buildings, and more.

Bringing you a dependable door closer at an attractive price point.

### **WARNING**

This product can expose you to lead which is known to the state of California to cause cancer and birth defects or other reproductive harm. For more information go to [www.P65warnings.ca.gov](http://www.P65warnings.ca.gov).

## FEATURES & BENEFITS



### Features

- Adjustable spring size 1-4 (YDC201) or fixed spring size 4 (YDC204)
- Tri-packed: regular, top jamb, or parallel mounting options
- Non-handed
- Cast aluminium body and threaded adjustable arm
- Rack & pinion design
- Independent latch, sweep, and backcheck intensity valves
- Available in two finishes
- 5 year limited warranty
- Door weight: 250 lbs.

### Benefits

- **Ideal for a variety of facilities:** Well-suited to commercial, aluminum storefront, and hospitality applications
- **Ease of product selection:** Economical, affordable, no-fuss product offering
- **Great for retrofit applications:** 3/4" by 9-1/16" closer dimensions easily retrofit to a common footprint
- **Reliable:** UL/cUL listed and designed to meet ANSI/BHMA Grade 1 certification standards

## HOW TO ORDER

Please select model number and finish.

Model	Description	Finish
YDC201	Multi-sized Closer – Non-Hold Open	689 or 690
YDC204	Fixed Size 4 Closer – Non-Hold Open	

### Notes:

- Before installing a door closer, verify the accessibility, fire, and life-safety requirements that are in effect. This includes the mounting height and projection into the clear opening. Check the adopted state and local building codes and consult the Authority Having Jurisdiction (AHJ).
- To maintain the warranty and ensure proper operation of the product, follow the installation instructions & templates and install on the inside of the building.
- Consult NFPA 80 for the hinge requirements on a fire door.
- Failure to use fasteners supplied with closer may void factory warranty.
- Optional fasteners are available for a variety of applications. Consult the door and frame manufacturer to ensure the proper fasteners are used to maintain certifications.
- Sizing charts are based on 1-3/4" x 7" standard weight doors swinging to 110°. Other application conditions (i.e. larger door heights or weight) may require larger size closer. Adjusting the spring power to meet the low opening force requirements of the Americans With Disabilities Act or ANSI/BHMA Standard A117.1, may not provide adequate closing power to dependably close and latch the door in some conditions (i.e. air movement from wind gusts or building stack pressure).

## Finishes

ANSI/BHMA Code Finish Description	
689 Aluminum Painted	690 Dark Bronze Painted
	

## Parts List

Description	Part Number*
Sleeve Nuts (1-3/4" door only)	SN-134
Cover (order by part number)	YDC200COV

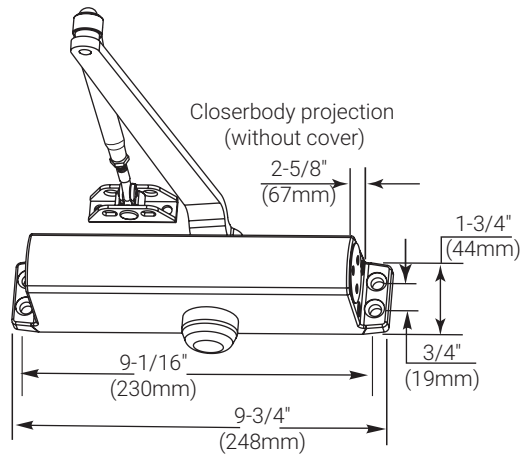
\*Specify finish when ordering.



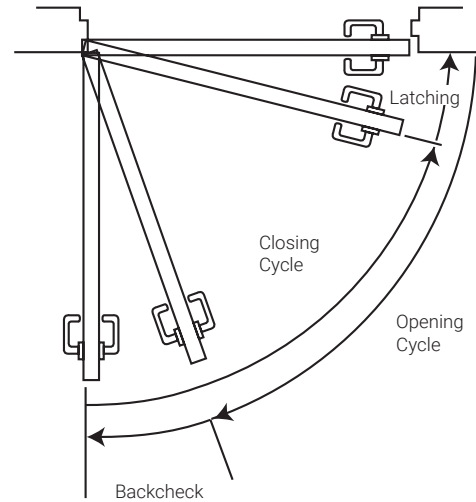
Optional cover  
(YDC200COV)

## DIMENSIONS AND APPLICATIONS

### Dimensions



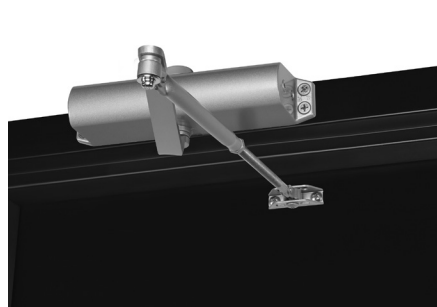
### Door Closing Latching Cycle



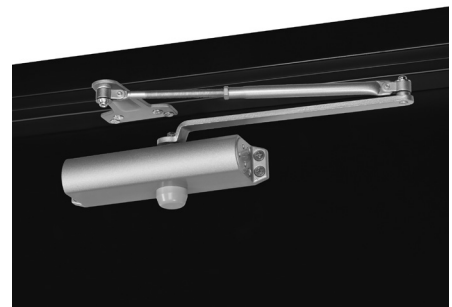
### Applications



Regular Arm



Top Jamb



Parallel Arm

The ASSA ABLOY Group is the global leader in access solutions.  
Every day, we help billions of people experience a more open world.

ASSA ABLOY Opening Solutions leads the development within door openings and products for access solutions in homes, businesses and institutions. Our offering includes doors, frames, door and window hardware, mechanical and smart locks, access control and service.

**ACCENTRA®**  
**ASSA ABLOY**

#### **TECHNICAL SUPPORT**

(troubleshooting, product use and application, returns)

Tel: 855-557-5078

Email: [techsupport.accentra@assaabloy.com](mailto:techsupport.accentra@assaabloy.com)

#### **CUSTOMER SUPPORT**

(orders, product configuration, pricing, lead-time)

Tel: 855-557-5078 x2

Email: [Customerservice.Accentra@assaabloy.com](mailto:Customerservice.Accentra@assaabloy.com)

**U.S.A.:**  
**ASSA ABLOY ACCENTRA®**  
225 Episcopal Road  
Berlin, CT 06037-4004  
Tel: 1-800-438-1951  
Fax: 1-800-338-0965  
[www.accentra-assaabloy.com](http://www.accentra-assaabloy.com)

**Canada:**  
**ASSA ABLOY Door Security Solutions Canada**  
160 Four Valley Drive  
Vaughan, Ontario L4K 4T9  
Tel: 1-800-461-3007  
Fax: 1-800-461-8989  
[assaabloydss.ca](http://assaabloydss.ca)

**International:**  
**ASSA ABLOY Americas International**  
Tel: 1-905-821-7775  
Fax: 1-905-821-1429  
[assaabloyai.com](http://assaabloyai.com)