

TEMPLATE T-DSH1000xERS_

Effective date: APRIL 1, 2024

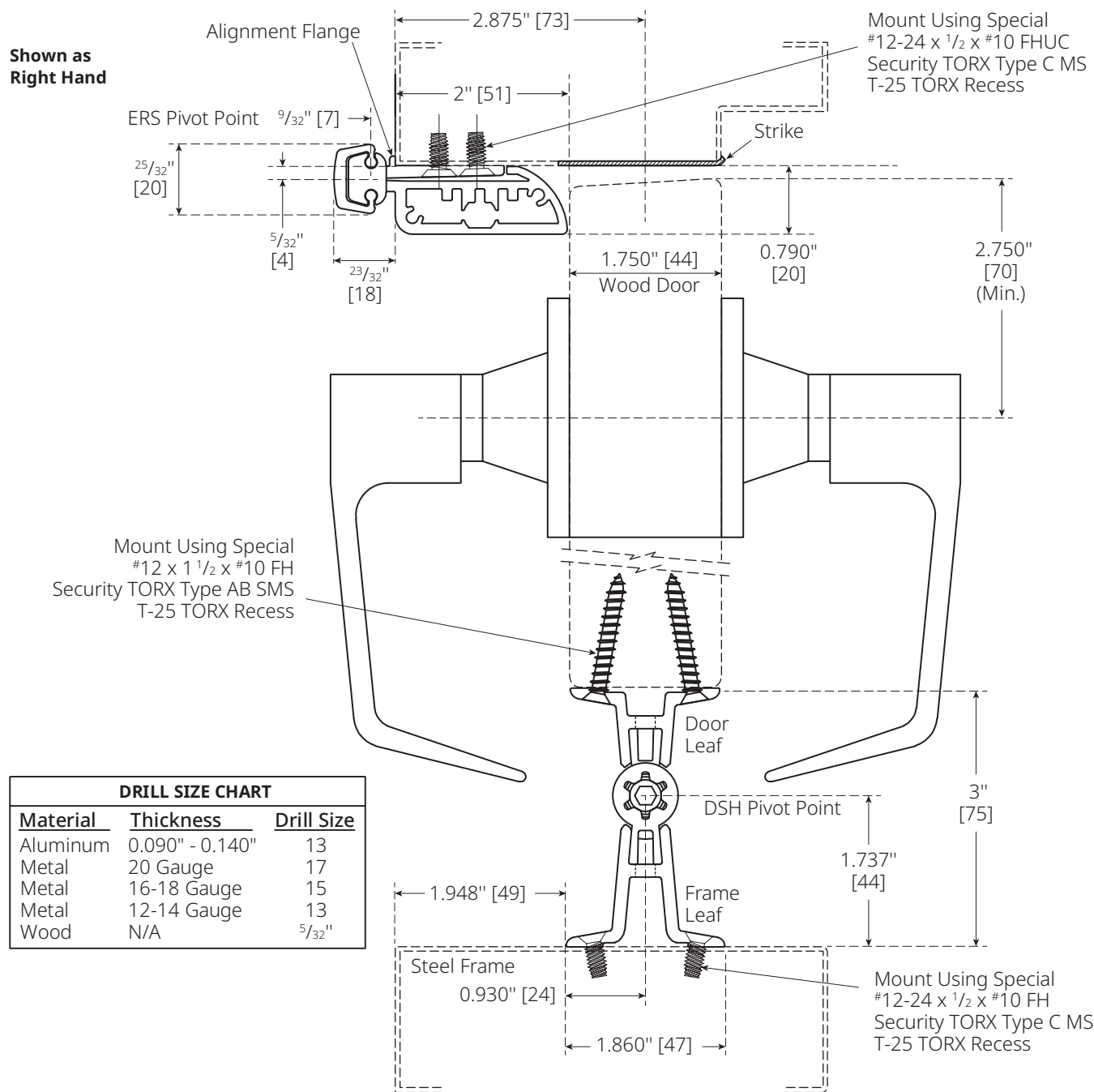
Supercedes: All Previous

PEMKO
ASSA ABLOY

NOT TO SCALE

Experience a safer
and more open world

PEMKO DOUBLE SWING 100 DEG HINGE & EMERGENCY RELEASE STOP - RIGHT HAND LAYOUT



Manufacturer reserves the right to make changes without formal notice. Contact Engineering for latest revision.

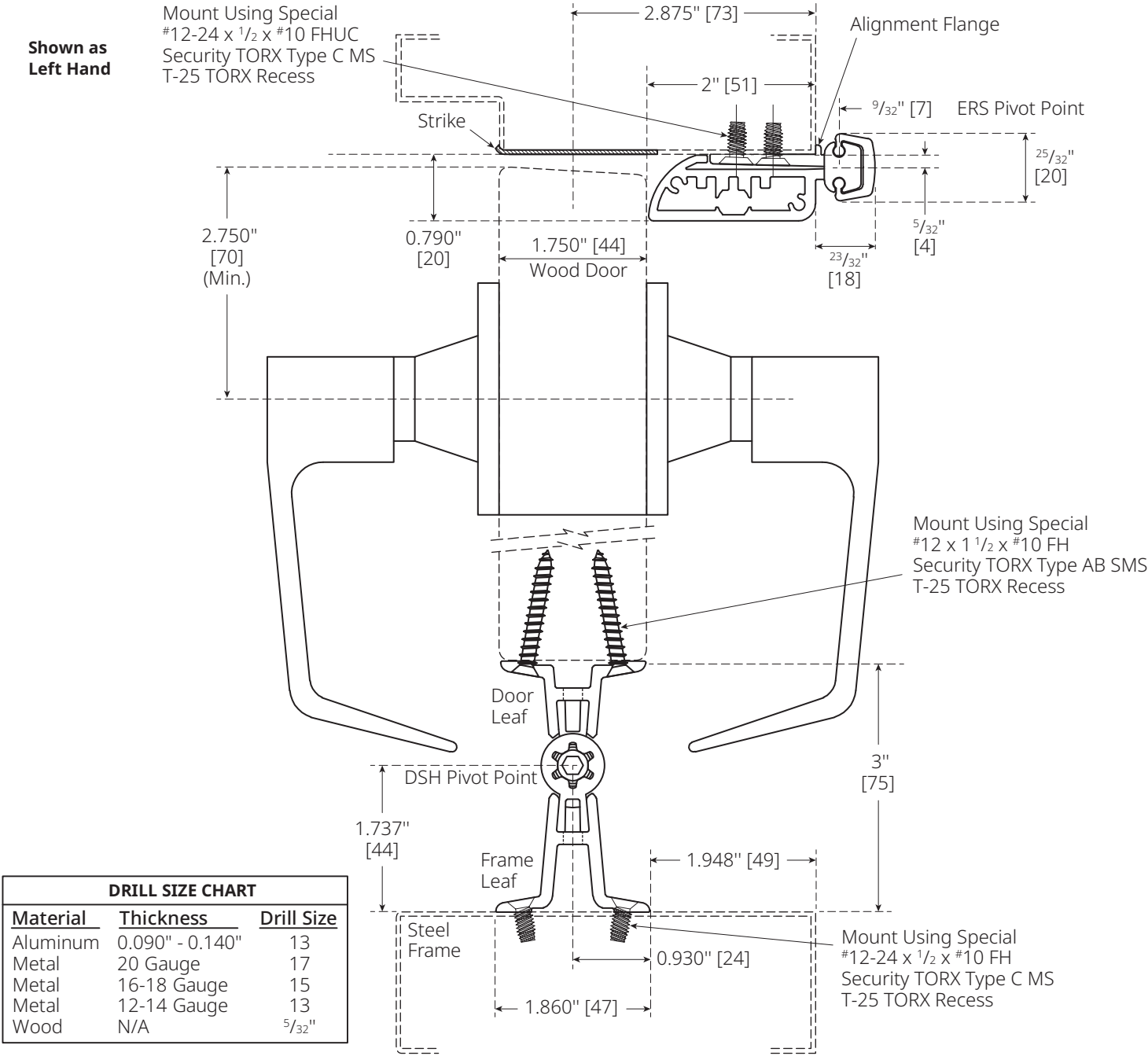
Pemko
5535 Distribution Dr.
Memphis, TN 38141
www.pemko.com
800 824 3018

4226 Transport St,
Ventura, CA 93003
800 283 9988

NOTE: Pemko reserves the right to make product changes and is not responsible for obsolete template errors. To ensure your template is current please visit our website at www.pemko.com or call us at 800 824 3018

Copyright © 2018-2024, ASSA ABLOY Accessories and Door Controls Group, Inc. All rights reserved. Reproduction in whole or in part without the express written permission of ASSA ABLOY Accessories and Door Controls Group, Inc. is prohibited. Printed in the U.S.A T - DSH1000 x ERS_RH 4/24

PEMKO DOUBLE SWING 100 DEG HINGE & EMERGENCY
 RELEASE STOP - LEFT HAND LAYOUT



Manufacturer reserves the right to make changes without formal notice. Contact Engineering for latest revision.

NOT TO SCALE

Experience a safer
and more open world

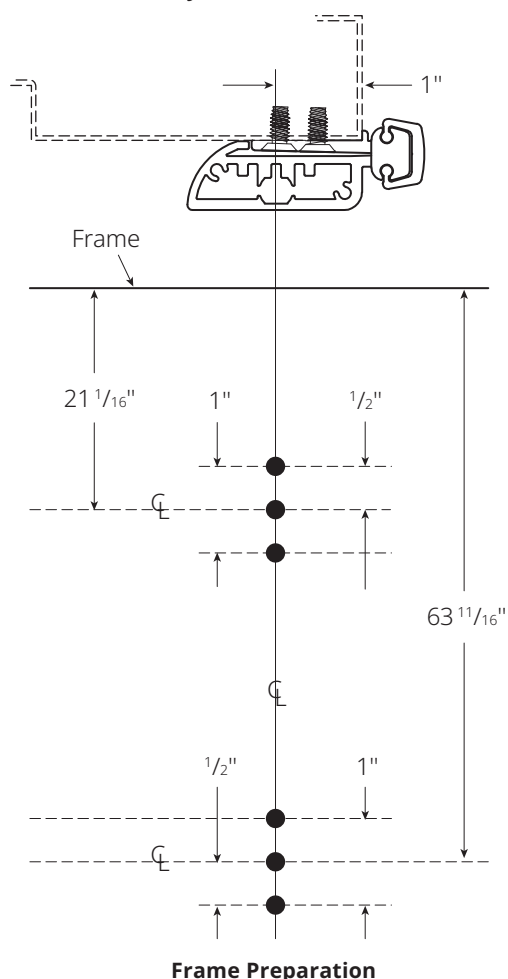
PEMKO DOUBLE SWING 100 DEG HINGE & EMERGENCY RELEASE STOP

Frame Preparation to Accept the Locking Mechanism of the ERS and ERSMP

ERS and ERSMP Frame Preparation: $\frac{3}{8}$ " hole in header (recommend to prep in field).

- Using a $\frac{1}{8}$ " drill bit, drill pilot holes at the six locations shown in **Frame Preparation**.
- As shown in the **Drill Size** diagram below, enlarge each hole using a $\frac{3}{8}$ " drill bit.
- Enlarge the two center holes using a $\frac{3}{4}$ " drill bit.
- Each of the two preps should resemble the two preps shown in the **Drill Size** diagram.

Template is for ERSMP Only



Top of Door Opening

