

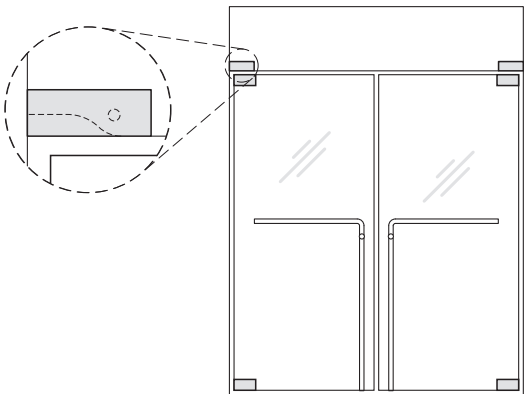
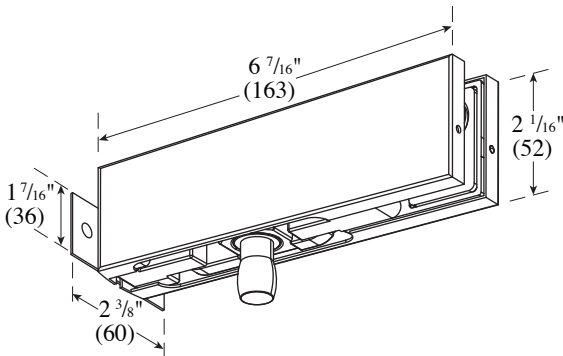
PFT-34 Transom Patch with Pivot
Installation Instructions

ASSA ABLOY

The global leader in
door opening solutions

For Installation Assistance, Call 855.594.6989 • www.assaabloyglass.us

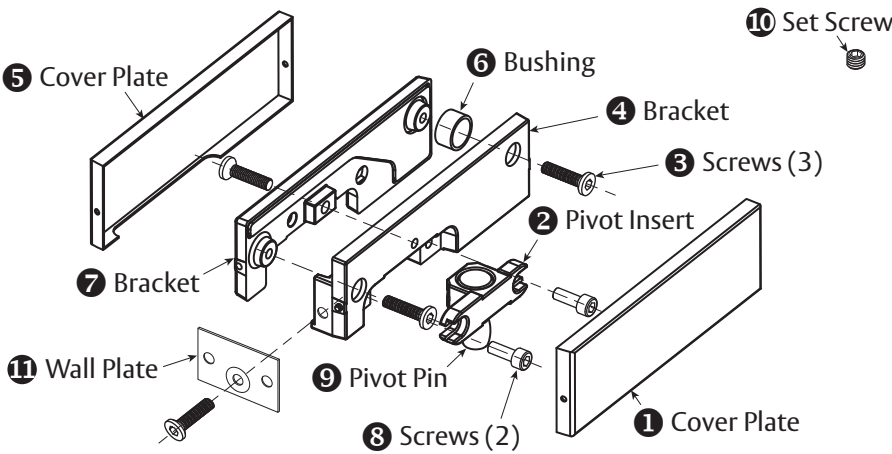
Tools Needed:
Torque Wrench and Bit
3 mm Hex Wrench
5 mm Hex Wrench



NOT TO SCALE

Parts Included

PFT-34



PFT-34 Parts List

1	Cover Plate
2	Pivot Insert — PF-INS3040
3	1 1/16" - M6 x 27 Screws (3)
4	Bracket
5	Cover Plate
6	Bushing

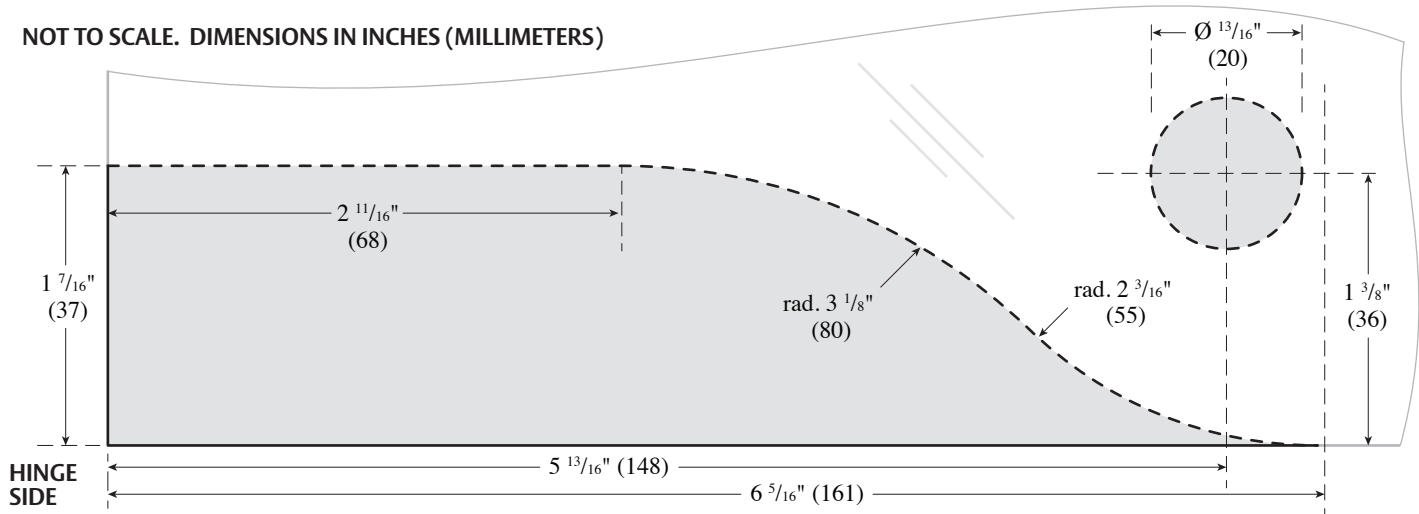
7	Bracket
8	3/4" - M6 x 16 Screws (2)
9	Pivot Pin
10	Set Screw
11	Wall Plate w/M8 x 25 Screw

1. Prepare the Transom Glass

USE FABRICATION SKETCH TO DRILL AND CUT GLASS.

- Cut away glass (shaded area) along dotted line to match sketch dimensions.
- Drill $1\frac{3}{16}$ " (20 mm) diameter hole.

NOT TO SCALE. DIMENSIONS IN INCHES (MILLIMETERS)

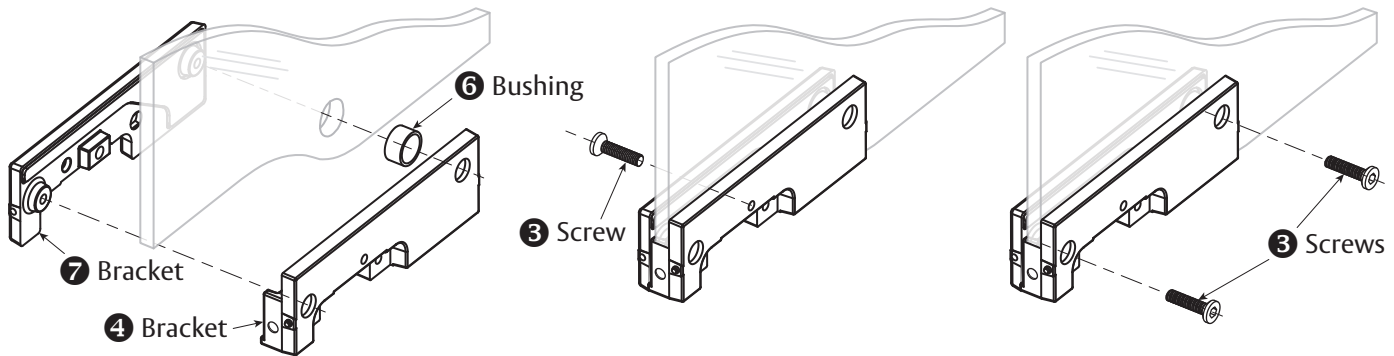


Caution: Office copiers, printers and facsimile machines may change the size of a drawing and make it inaccurate to use as a template.

2. Fasten Support Brackets

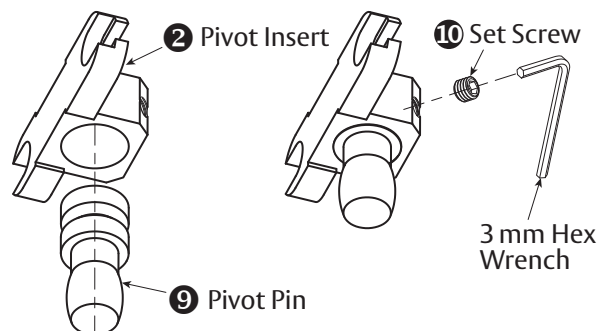
Make sure the surface is thoroughly cleaned.

- Insert Bushing **6** in prepped $1\frac{3}{16}$ " (20 mm) diameter hole.
- Place Bracket **4** into prepped area of glass, join Bracket **7** from the other side. Insert center Screw **3** into main center hole and tighten with 5 mm hex wrench to hold Brackets together. Do not tighten completely to allow for adjustments throughout installation.
- Insert 2 remaining Screws **3** into Bracket **4**, align fitting to desired position. Torque both Screws to 12 nm. Then tighten center Screw **3** to 12 nm.



3. Install Pivot Pin

- Place Pivot Pin **9** into Pivot Insert **2**.
- Place Set Screw **10** into set screw hole.
- Tighten Set Screw **10** using 3mm hex wrench to hold Pivot Pin **9** in place.



ASSA ABLOY

The global leader in
door opening solutions

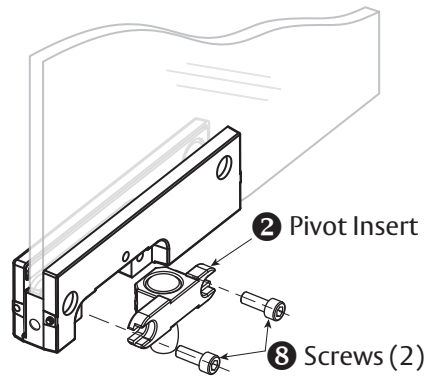
Copyright © 2017, ASSA ABLOY Inc. All rights reserved. Reproduction in whole or in part without the express written permission of ASSA ABLOY Inc. is prohibited.

PFT-34 - 06/17

4. Install Pivot Insert

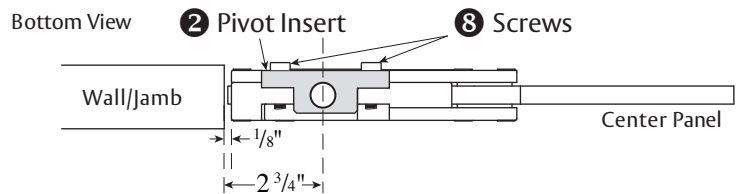
Ensuring that the long leg is toward the hinge side of the glass.

- Insert Screws **8** on either side of Pivot Insert **2** to secure to patch fitting using 5mm hex wrench.
- Do not tighten completely to allow for adjustments throughout installation.



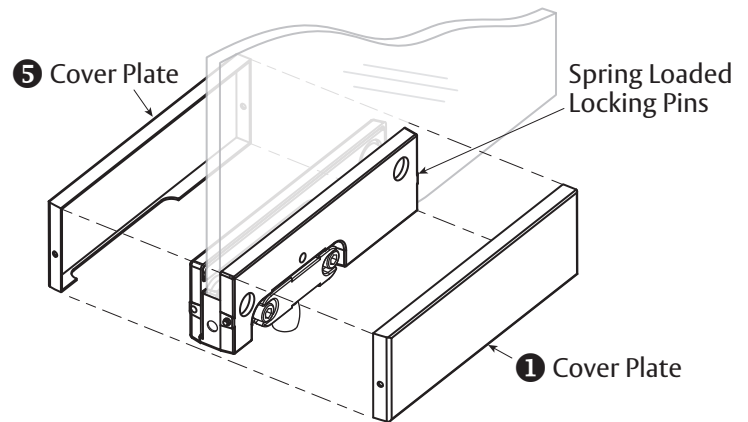
5. Align Pivot Insert

- Alignment of Pivot Insert **2** is determined by pivot pin.
- After alignment, torque Pivot Screws **8** to 12 nm in alternating fashion.



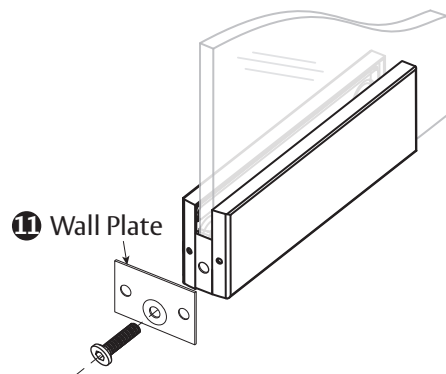
6. Install Cover Plates

- Remove adhesive strip paper on both Brackets (**4**, **7**) to adhere Cover Plates **5** & **1**.
- Hook Cover Plates **5** & **1** over hinge side locking pin.
- Push in spring loaded locking pin on opposite side of Bracket.
- Snap on Cover Plates.



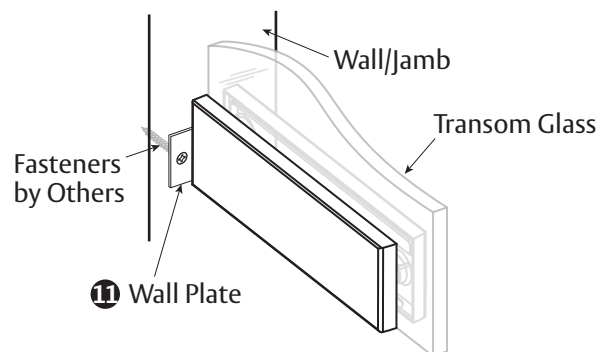
7. Attach Wall Bracket

- Attach Wall Bracket **11** to Patch Fitting.



8. Install Transom

- Install Transom Glass and screw Wall Bracket **11** to Wall/Jamb.



ASSA ABLOY

The global leader in
door opening solutions

Copyright © 2017, ASSA ABLOY Inc. All rights reserved. Reproduction in whole or in part without the express written permission of ASSA ABLOY Inc. is prohibited.

PFT-34 - 06/17

ASSA ABLOY is the global
leader in door opening solutions,
dedicated to satisfying
end-user needs for security,
safety and convenience

ASSA ABLOY

www.assaabloyglass.us

USA:
ASSA ABLOY Glass Solutions
Rockwood, PA 15557
Phone: 855.594.6989