

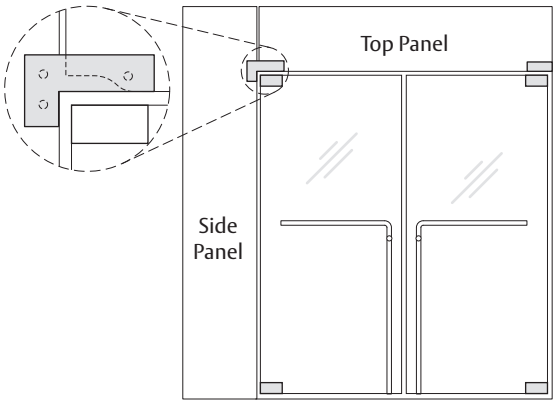
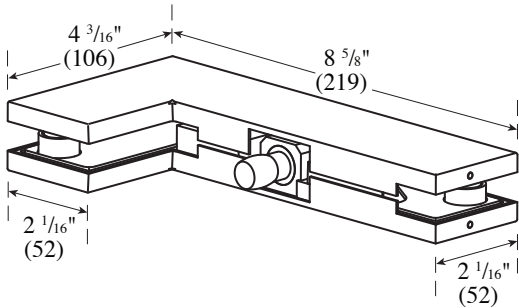
PFT-40 Sidelite Transom Patch  
Installation Instructions

ASSA ABLOY

The global leader in  
door opening solutions

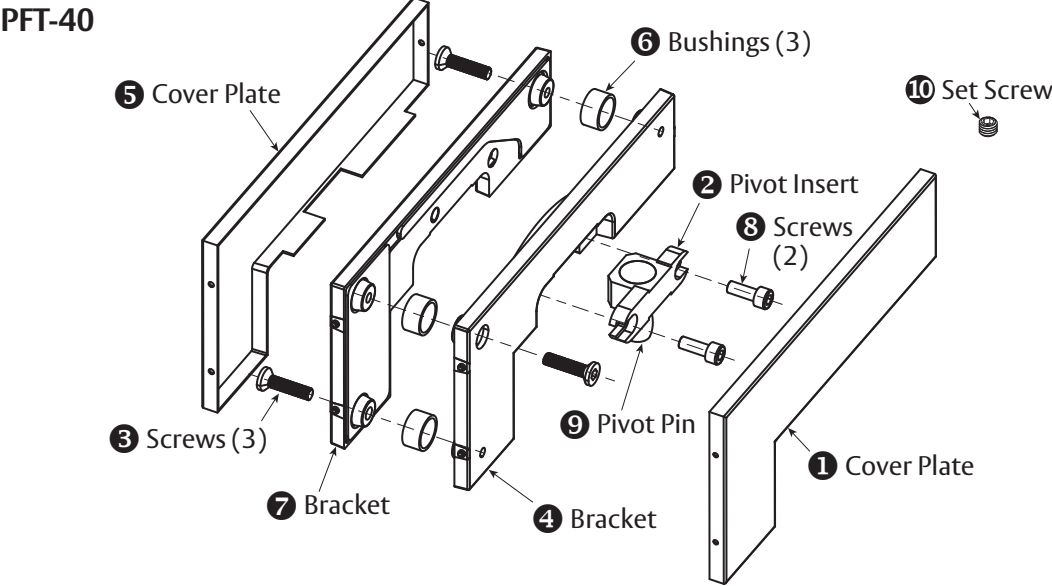
For Installation Assistance, Call 855.594.6989 • [www.assaabloyglass.us](http://www.assaabloyglass.us)

Tools Needed:  
Torque Wrench and Bit  
3 mm Hex Wrench  
5 mm Hex Wrench



NOT TO SCALE

Parts Included



PFT-40 Parts List

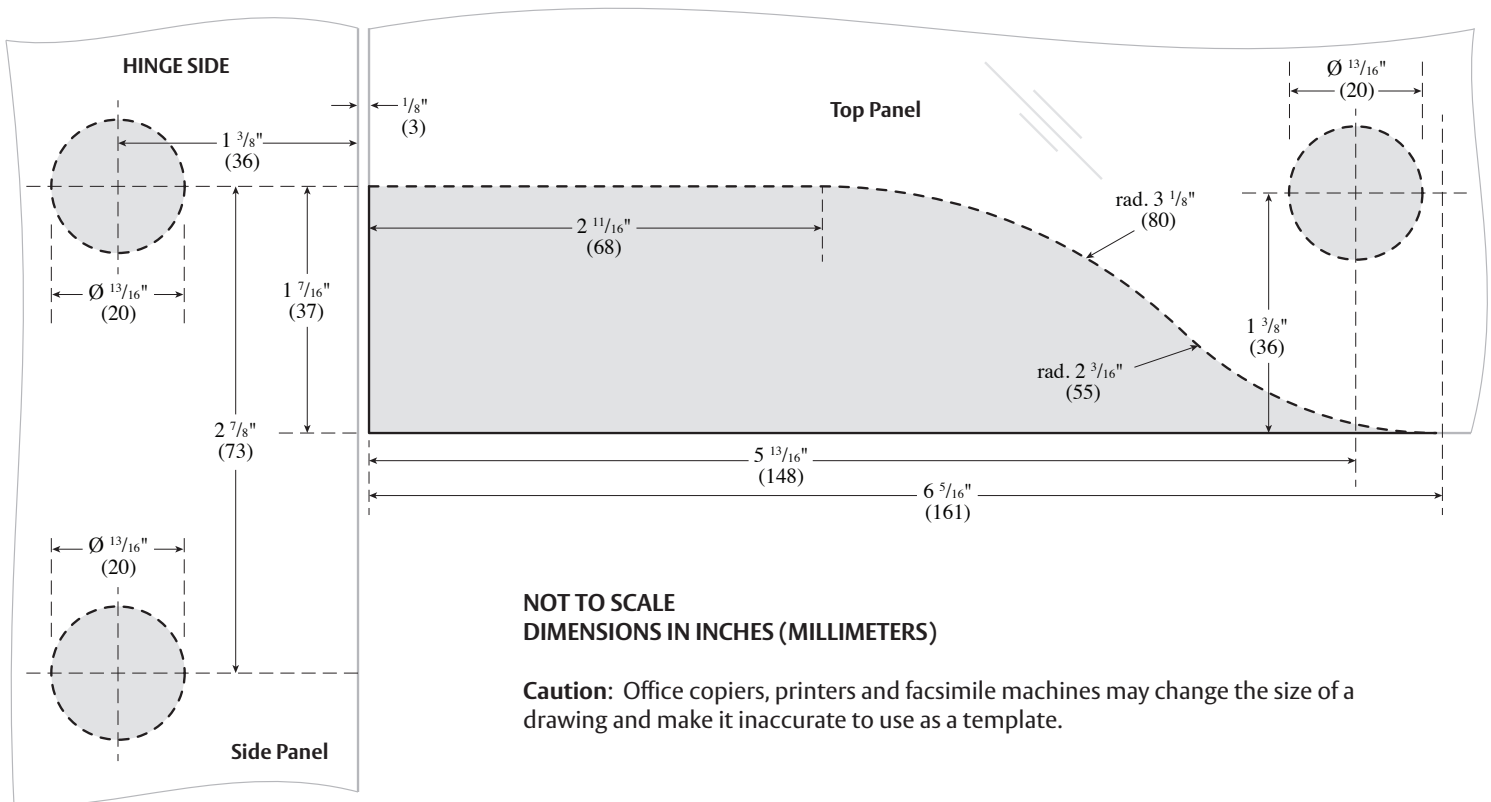
1	Cover Plate
2	Pivot Insert — PF-INS3040
3	1 1/16" - M6 x 27 Screws (3)
4	Bracket
5	Cover Plate

6	Bushings (3)
7	Bracket
8	3/4" - M6 x 16 Screws (2)
9	Pivot Pin
10	Set Screw

# 1. Prepare the Glass

## USE FABRICATION SKETCH TO DRILL AND CUT GLASS.

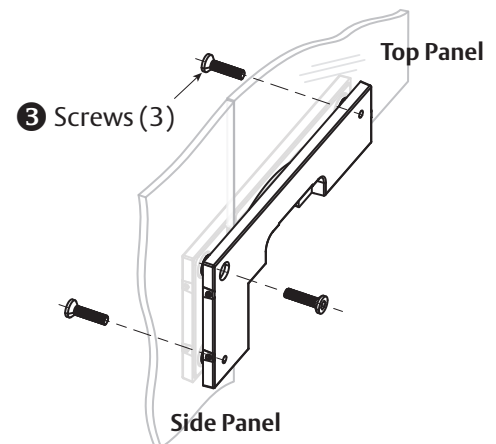
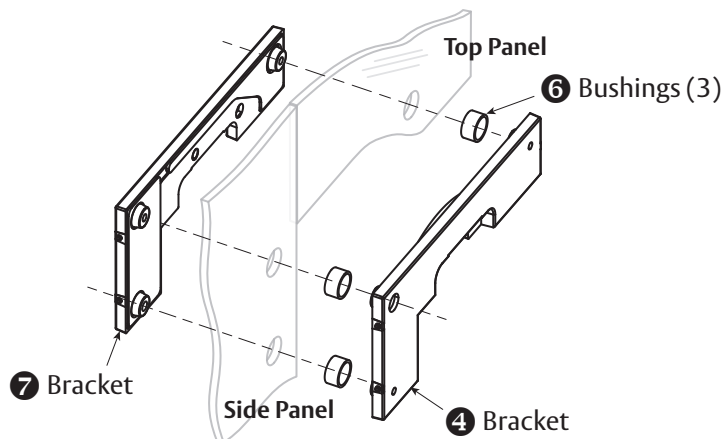
- Cut away glass (shaded area) along dotted line to match sketch dimensions.
- Drill three  $\frac{13}{16}$ " (20 mm) diameter holes.



# 2. Fasten Support Brackets

## Make sure the surface is thoroughly cleaned and remove all screws.

- Insert the three Bushings **6** into prepped  $\frac{13}{16}$ " (20 mm) diameter holes.
- Place Bracket **4** into prepped area of glass, join Bracket **7** from the other side. Insert Screw **3** into Bracket **4** using 5 mm wrench to tighten Brackets together. Do not tighten completely to allow for adjustments throughout installation.
- Insert two remaining Screws **3** into Bracket **7**, align fitting to desired position. Torque both Screws in alternating fashion to 12 nm. Then tighten Bracket **4** Screw to 12 nm.



**ASSA ABLOY**

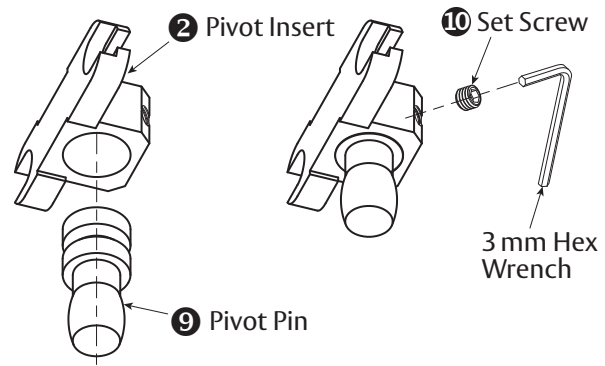
The global leader in  
door opening solutions

Copyright © 2017, ASSA ABLOY Inc. All rights reserved. Reproduction in whole or in part without the express written permission of ASSA ABLOY Inc. is prohibited.

PFT-40 - 06/17

### 3. Install Pivot Pin

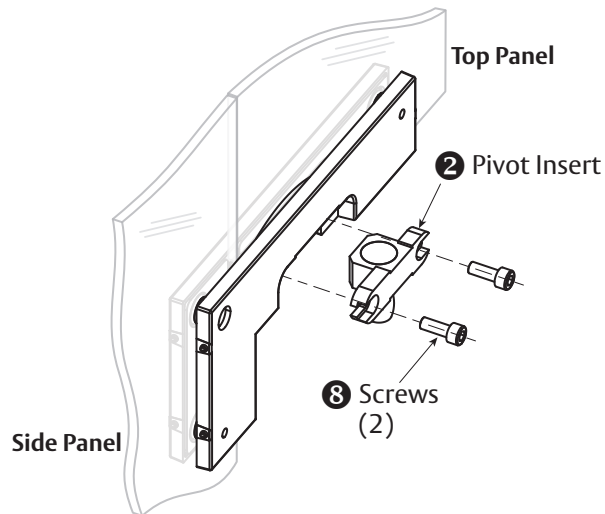
- Place Pivot Pin **9** into Pivot Insert **2**.
- Place Set Screw **10** into set screw hole.
- Tighten Set Screw **10** to hold Pivot Pin in place using 3 mm hex wrench.



### 4. Install Pivot Insert

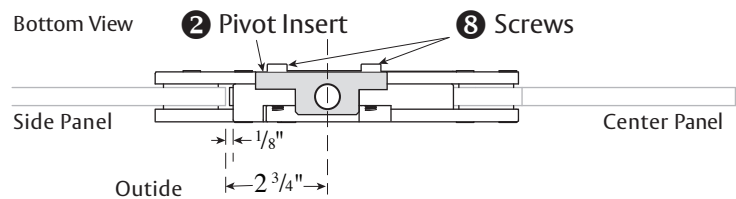
Ensuring that the long leg is toward the hinge side of the glass and the set screw pin hole is facing the inside of the room.

- Insert Screws **8** on either side of Pivot Insert **2** to secure to patch fitting using 5 mm hex wrench.
- Do not tighten completely to allow for adjustments throughout installation.



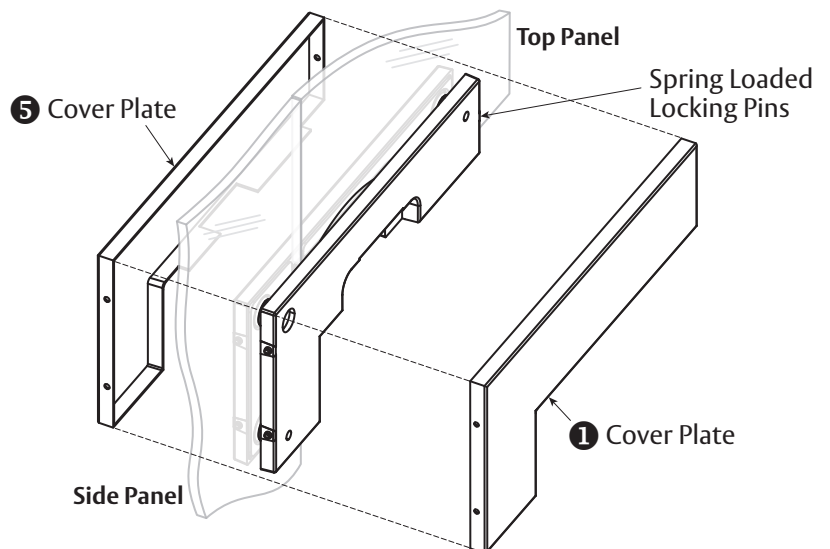
### 5. Align Pivot Insert

- Alignment of Pivot Insert **2** is determined by Pivot Pin.
- After alignment, torque Screws **8** to 12 nm in alternating fashion using 5 mm hex wrench.



### 6. Install Cover Plates

- Remove adhesive strip paper on both Brackets (**4** & **7**) to adhere Cover Plates **1** & **5**.
- Hook Cover Plates **1** & **5** over hinge side locking pins.
- Push in spring loaded locking pin on opposite side of Bracket.
- Snap on Cover Plates.



**ASSA ABLOY**

The global leader in  
door opening solutions

Copyright © 2017, ASSA ABLOY Inc. All rights reserved. Reproduction in whole or in part without the express written permission of ASSA ABLOY Inc. is prohibited.

PFT-40 - 06/17

**3**

ASSA ABLOY is the global  
leader in door opening solutions,  
dedicated to satisfying  
end-user needs for security,  
safety and convenience

---

**ASSA ABLOY**

---

[www.assaabloyglass.us](http://www.assaabloyglass.us)

USA:  
ASSA ABLOY Glass Solutions  
Rockwood, PA 15557  
Phone: 855.594.6989