

PFT-41 RH & LH Sidelite Transom

Patch Fitting w/Fin

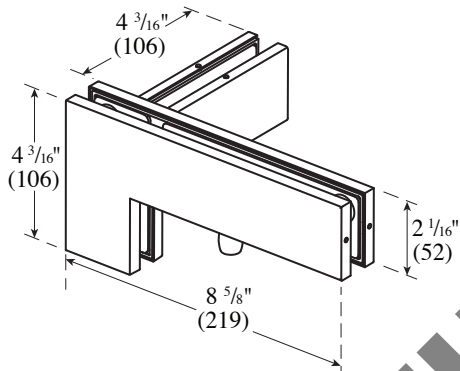
Installation Instructions

ASSA ABLOY

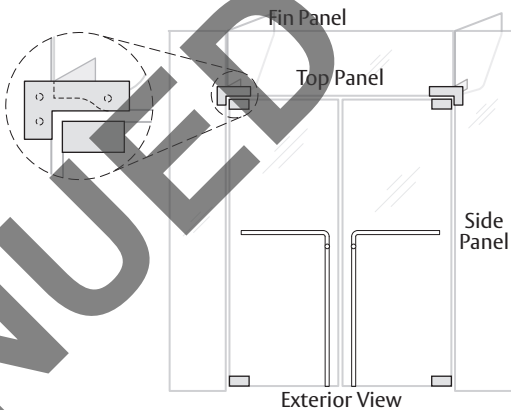
The global leader in
door opening solutions

For Installation Assistance, Call 855.594.6989 • www.assaabloyglass.us

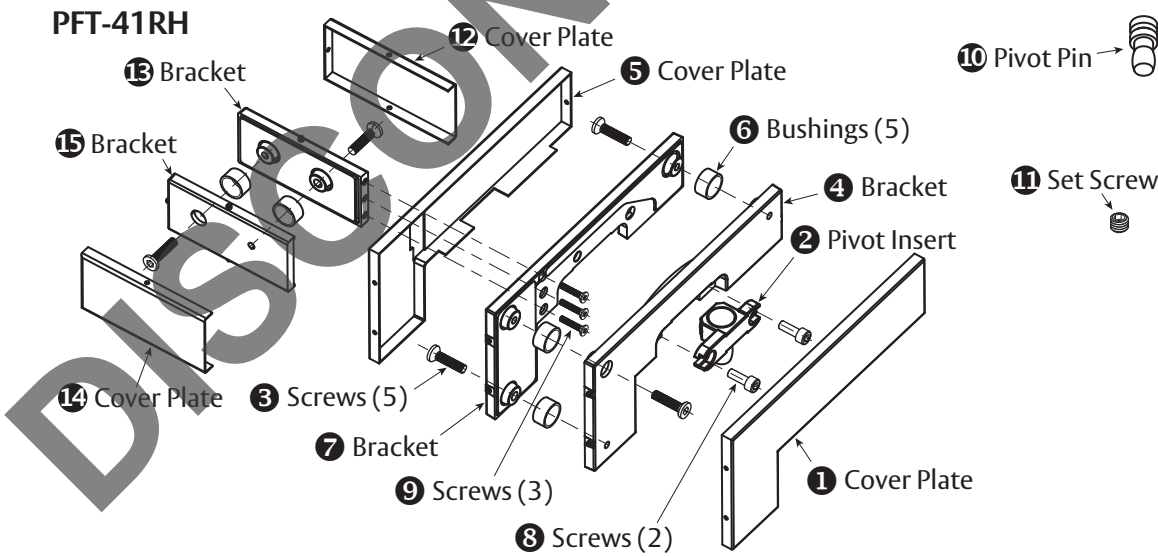
Tools Needed:
Torque Wrench and Bit
Screwdriver (Phillips)
3 mm Hex Wrench
5 mm Hex Wrench



NOT TO SCALE



Parts Included



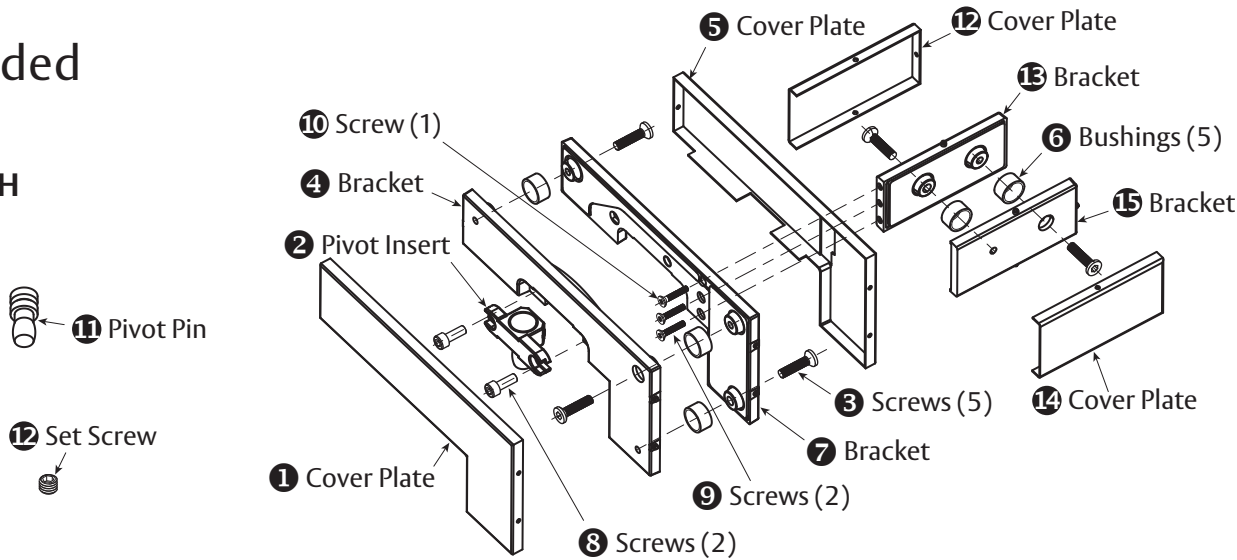
PFT-41RH Parts List

1	Cover Plate
2	Pivot Insert — PF-INS3040
3	1 1/16" - M6 x 27 Screws (5)
4	Bracket
5	Cover Plate
6	Plastic Bushings (5)
7	Bracket
8	3/4" - M6 x 16 Screws (2)

9	3/4" - M4 x 20 Phillips Head Screws (3)
10	Pivot Pin
11	Set Screw
12	Cover Plate
13	Bracket
14	Cover Plate
15	Bracket

Parts Included

PFT-41LH



PFT-41LH Parts List

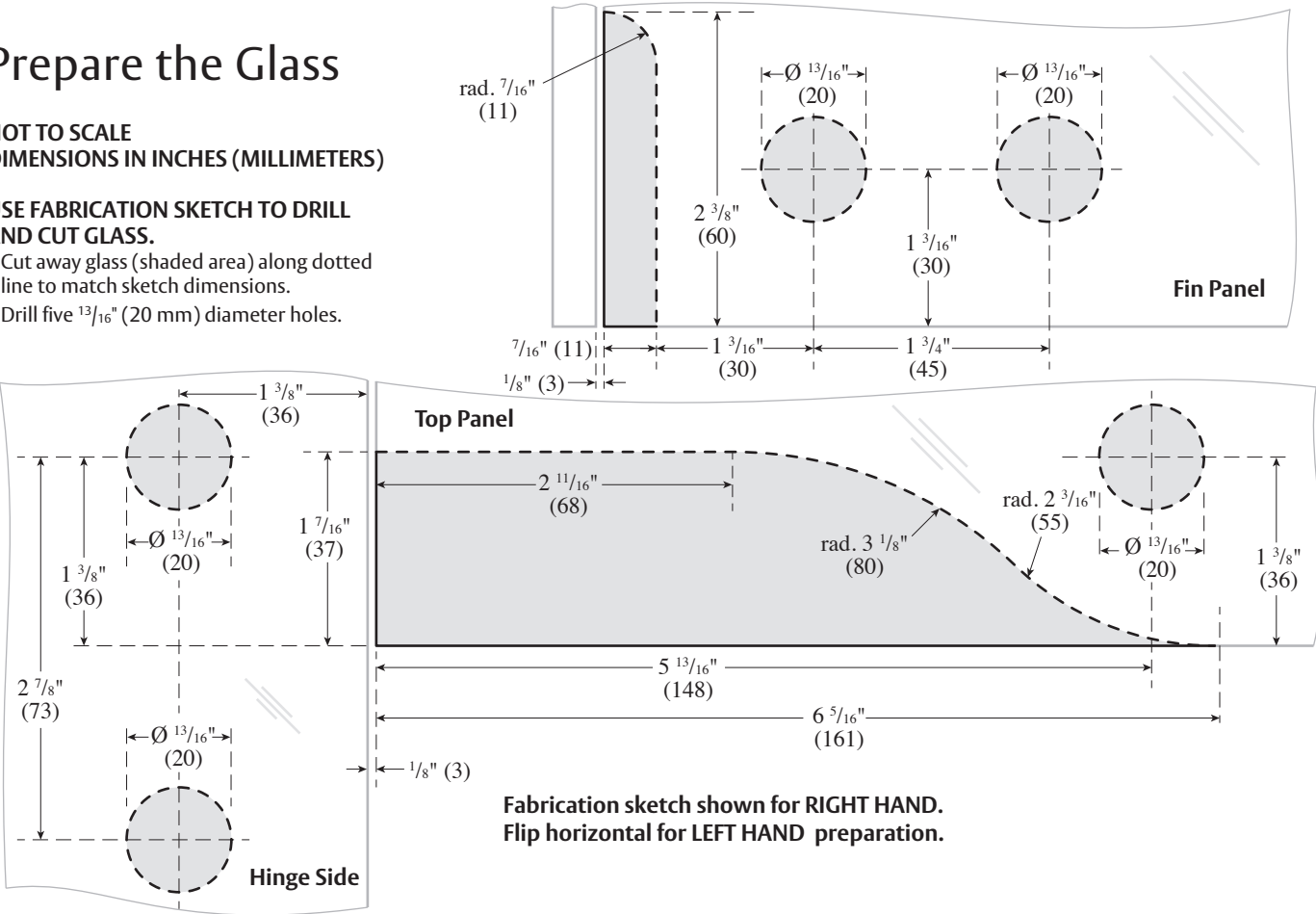
1	Cover Plate	9	3/4" - M4 x 20 Phillips Head Screws (2)
2	Pivot Insert — PF-INS3040	10	1" - M4 x 25 Phillips Head Screw (1)
3	1 1/16" - M6 x 27 Screws (5)	11	Pivot Pin
4	Bracket	12	Set Screw
5	Cover Plate	13	Cover Plate
6	Plastic Bushings (5)	14	Bracket
7	Bracket	14	Cover Plate
8	3/4" - M6 x 16 Screws (2)	15	Bracket

1. Prepare the Glass

NOT TO SCALE
DIMENSIONS IN INCHES (MILLIMETERS)

USE FABRICATION SKETCH TO DRILL AND CUT GLASS.

- Cut away glass (shaded area) along dotted line to match sketch dimensions.
- Drill five 13/16" (20 mm) diameter holes.



ASSA ABLOY

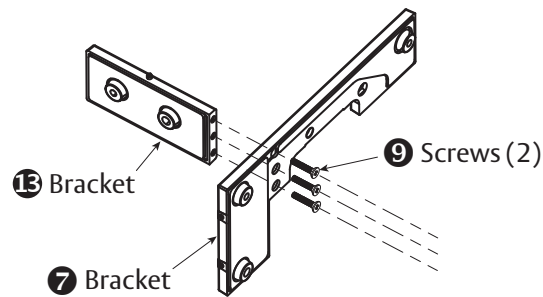
The global leader in
door opening solutions

Copyright © 2017, ASSA ABLOY Inc. All rights reserved. Reproduction in whole or in part without the express written permission of ASSA ABLOY Inc. is prohibited.

2. Attach Fin to Support Bracket (following diagrams show RIGHT HAND bracket)

Make sure the surface is thoroughly cleaned and remove all screws.

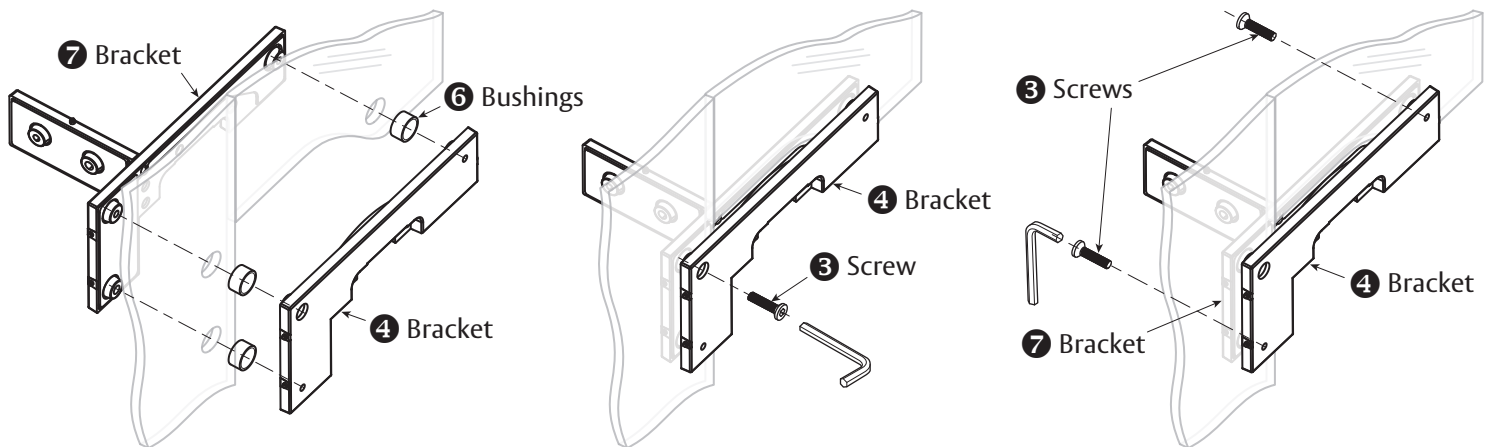
- Dispose the three shipping spacers.
- Attach Bracket 13 to Bracket 7 with Screws 9 using screwdriver ensuring that the bushing side of Bracket 13 is facing the hinge side of glass.



3. Fasten Support Brackets

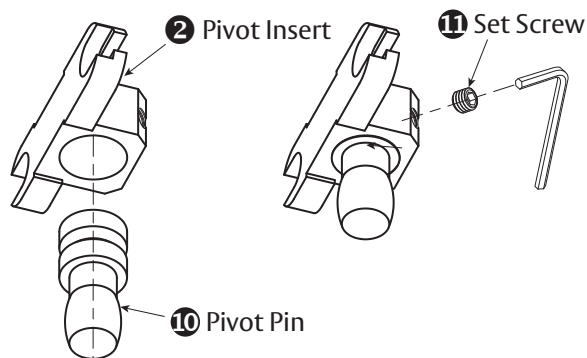
Make sure the surface is thoroughly cleaned and remove all screws.

- Insert three Bushings 6 into prepped $\frac{13}{16}$ " (20 mm) diameter holes to join Brackets 4 & 7.
- Place Bracket 4 into prepped area of glass, join Bracket 7 from the other side. Insert Screw 3 into main center hole of Bracket 4 and tighten with 5 mm hex wrench to hold Brackets together. Do not tighten completely to allow for adjustments throughout installation.
- Insert 2 Screws 3 into Bracket 7, align fitting to desired position. Torque both Screws to 12 nm. Then tighten center Screw to 12 nm.



4. Install Pivot Pin

- Place Pivot Pin 10 into Pivot Insert 2.
- Place Set Screw 11 into set screw hole on Pivot Insert.
- Tighten Set Screw 11 using the 3mm hex wrench to hold Pivot Pin 10 in place.



ASSA ABLOY

The global leader in
door opening solutions

Copyright © 2017, ASSA ABLOY Inc. All rights reserved. Reproduction in whole or in part without the express written permission of ASSA ABLOY Inc. is prohibited.

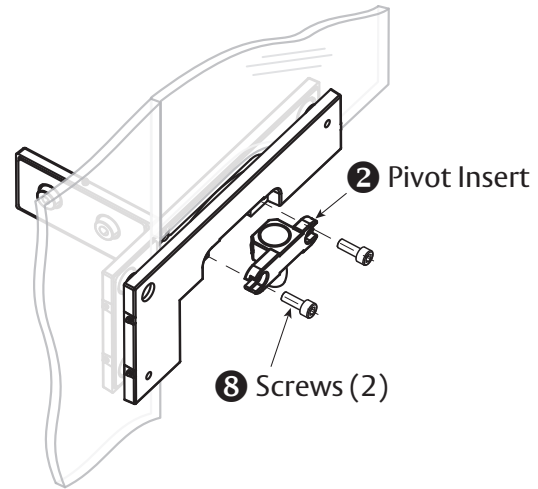
PFT-41 - 06/17

3

5. Install Pivot Insert

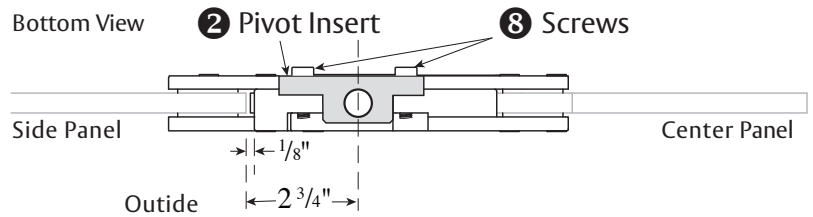
Ensuring that the long leg is toward the hinge side of the glass.

- Insert Screws **8** on either side of Pivot Insert **2** to secure to patch fitting.
- Do not tighten completely to allow for adjustments throughout installation.



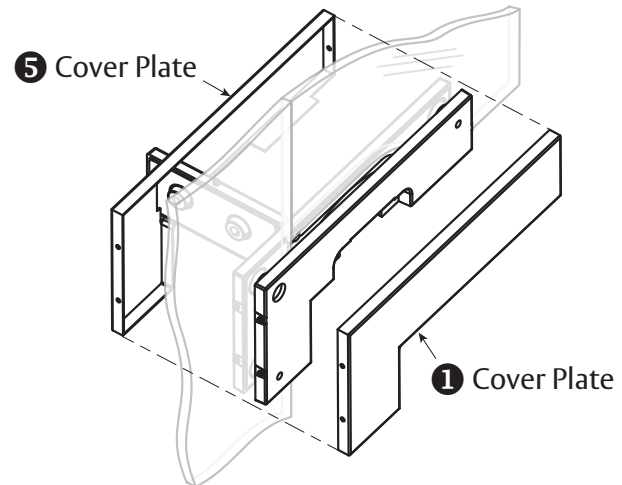
6. Align Pivot Insert

- Alignment of Pivot Insert **2** is determined by pivot pin.
- After alignment, torque Pivot Screws **8** to 12 nm in alternating fashion.



7. Adhere Cover Plates

- Remove adhesive strip paper on both Brackets (**4**, **7**) to adhere Cover Plates **5** & **1**.
- Hook Cover Plates **5** & **1** over hinge side locking pins.
- Push in spring loaded locking pin on opposite side of Bracket.
- Snap on Cover Plates.



ASSA ABLOY

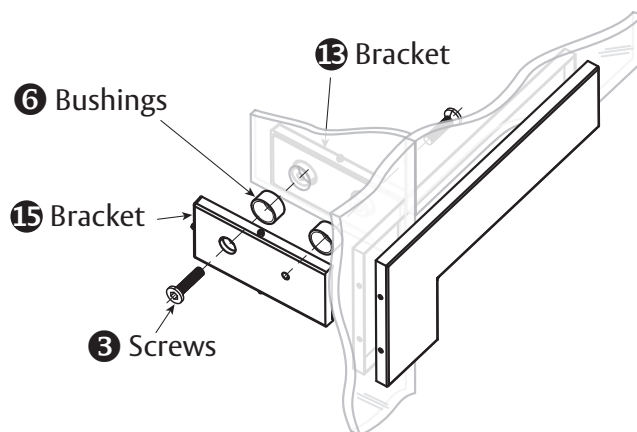
The global leader in
door opening solutions

Copyright © 2017, ASSA ABLOY Inc. All rights reserved. Reproduction in whole or in part without the express written permission of ASSA ABLOY Inc. is prohibited.

PFT-41 - 06/17

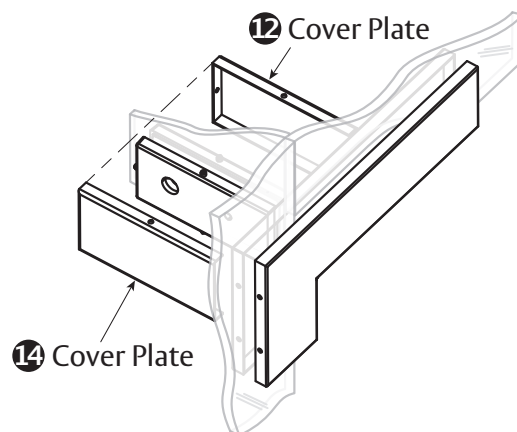
8. Install Fin

- Insert two Bushings **6** into prepped 20 mm (.757") diameter holes to join Brackets **13** & **15**.
- Place Bracket **13** into prepped area of glass, join Bracket **15** from the other side. Insert Screw **3** into hole and tighten with 5 mm hex wrench to hold Brackets together. Do not tighten completely to allow for adjustments throughout installation.
- Insert Screw **3** into Bracket **13**, align fitting to desired position. Torque both Screws **3** to 12 nm.



9. Adhere Fin Cover Plates

- Remove adhesive strip paper on both Brackets **13** & **15** to adhere Cover Plates **12** & **14**.
- Hook Cover Plates **12** & **14** over hinge side locking pin.
- Push in spring loaded locking pins on top and bottom of Bracket.
- Snap on Cover Plates.



ASSA ABLOY

The global leader in
door opening solutions

Copyright © 2017, ASSA ABLOY Inc. All rights reserved. Reproduction in whole or in part without the express written permission of ASSA ABLOY Inc. is prohibited.

PFT-41 - 06/17

5

ASSA ABLOY is the global
leader in door opening solutions,
dedicated to satisfying
end-user needs for security,
safety and convenience

ASSA ABLOY

www.assaabloyglass.us

USA:
ASSA ABLOY Glass Solutions
Rockwood, PA 15557
Phone: 855.594.6989