

Architectural Door Accessories

ASSA ABLOY

Pemko Sliding 200 Series

The global leader in
door opening solutions

Door Leaf Capacity - Up to 200 lbs

H200PACK Kit Includes:

2 ea - H222R1 Hangers

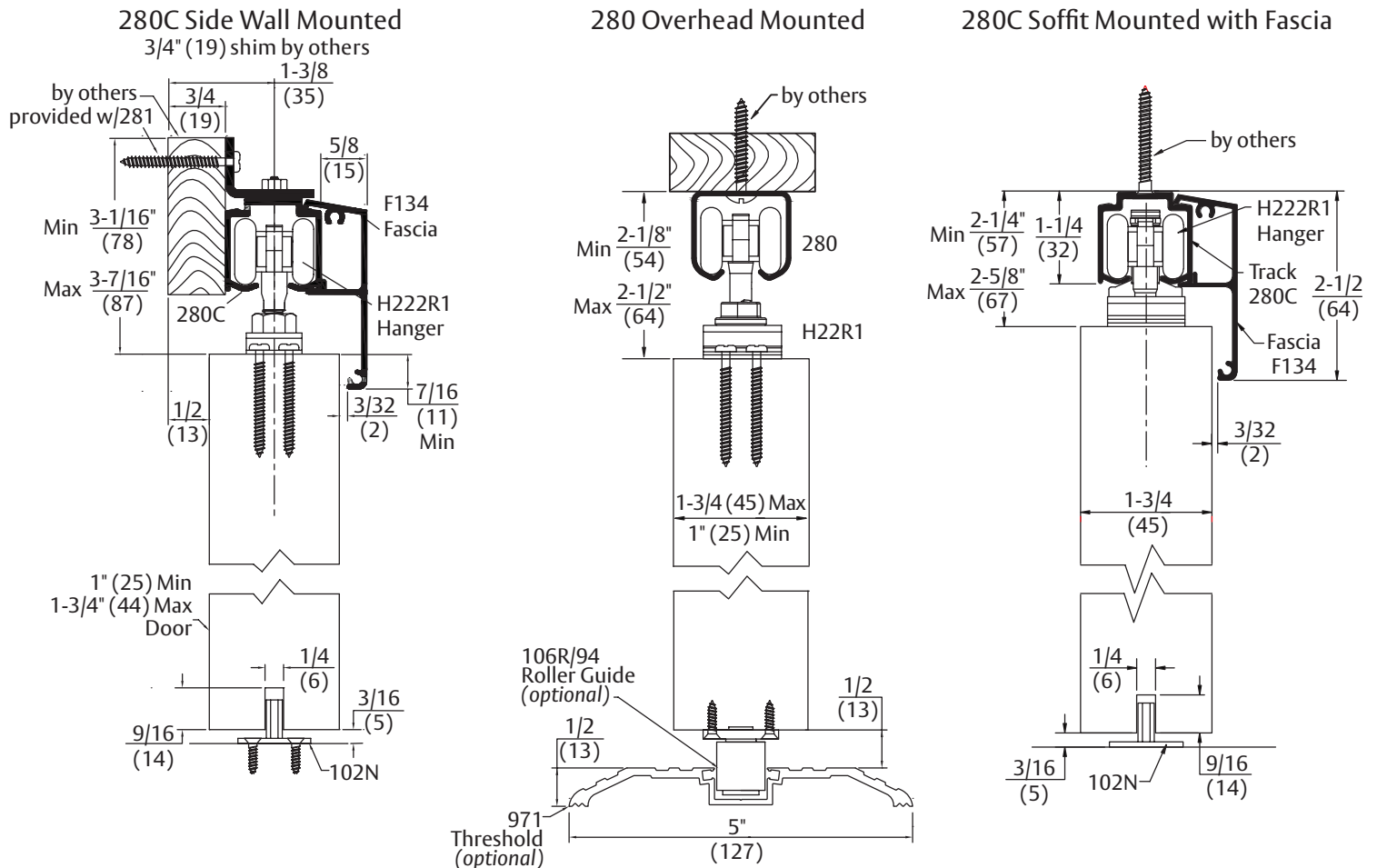
2 ea - TELS-14 In Track Stops

1 ea - 102N Mortised Guide

1 ea - Adjusting Wrench

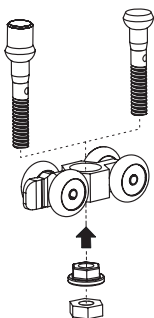
Track sold separately.

Bracket, Fascia, Roller Guide, and Threshold shown are optional and sold separately.



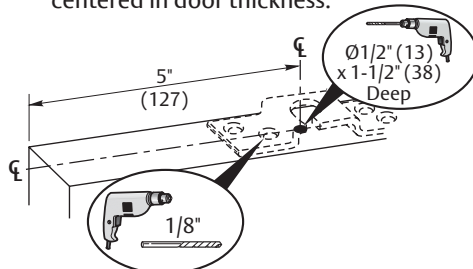
1. Assemble hanger.

If using soft close device, use taller hanger bolt.



2. Fit hanger apron to door panel.

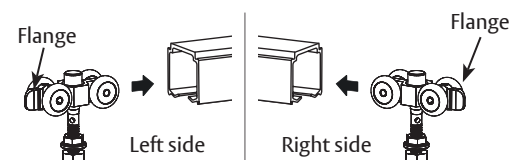
Drill 1/2" (13) dia x 1 1/2" (38) deep hole 5" (127) from door edge to centerline and centered in door thickness.



3. Insert hangers.

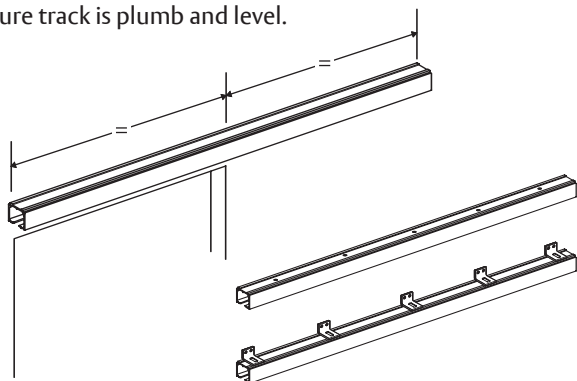
Ensure that hanger flange is pointing in direction of clip portion of stop as shown.

NOTE: If not using soft close, hanger will have shorter hanger bolt.



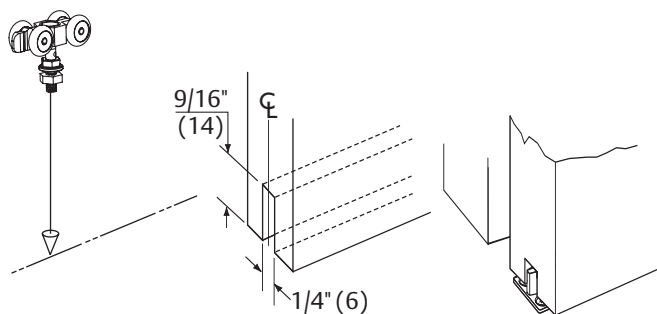
4. Secure track.

Ensure track is plumb and level.



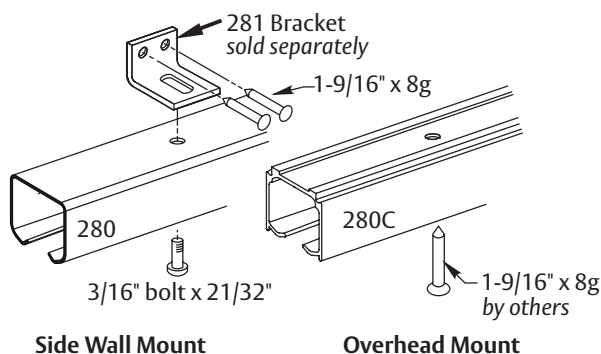
5. Mortise door and fit door guide.

Attach a plumb line to hanger. Place hanger inside track. Using plumb line, mark for position of door guide on floor.



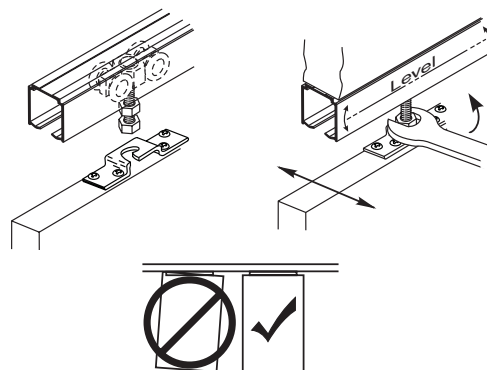
6. Face & Soffit Fix Options.

Use one bracket or fastener at each end of track and no more than 3' in between.



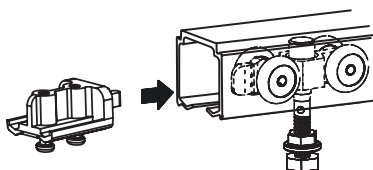
7. Attach door panel and adjust until level.

If using soft close device, refer to provided installation instructions beginning with step 3.



8. Install, position and secure retaining stop.

If using soft close device, do not install retaining stop.



Alternative guides. (Sold Separately)

