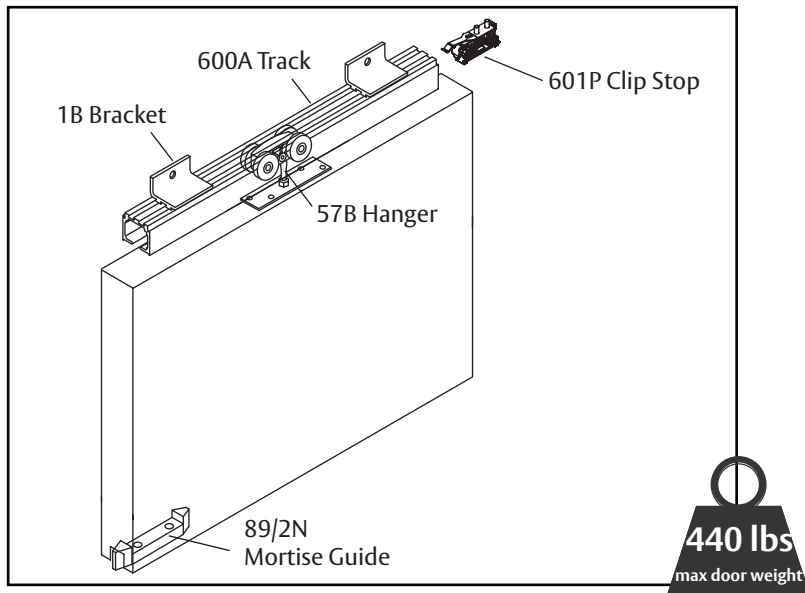


## Pemko H440A-SW Sliding Door Hardware

Experience a safer  
and more open world

**Door Leaf Capacity - Up to 440 lbs.**

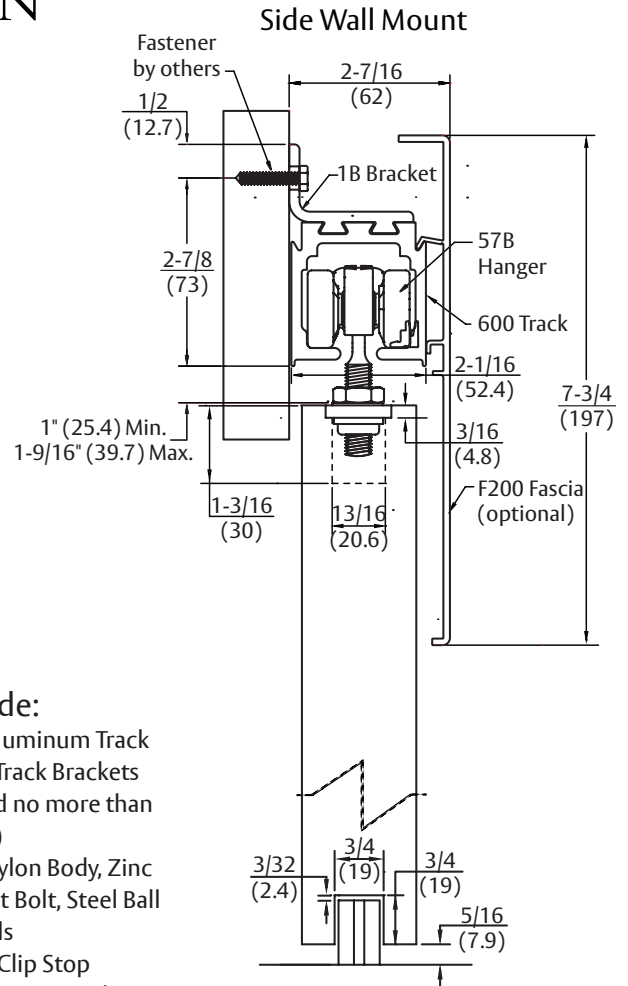
Manufactured by  
**HENDERSON**



Part Number	Material	Track Length	Door Width
H440A-SW/6	Aluminum	72"	36"
H440A-SW/8	Aluminum	96"	48"
H440A-SW/10	Aluminum	120"	60"
H440A-SW/12	Aluminum	144"	72"

### H440A-SW Kits Include:

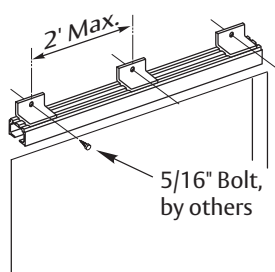
- 1 ea 600A Mill Finished Aluminum Track
- 1B Side Wall Mount Track Brackets  
(One at each end and no more than two feet in between)
- 2 ea 57B Hangers: Gray Nylon Body, Zinc Coated Steel Pendant Bolt, Steel Ball Bearing Nylon Wheels
- 2 ea 601P Nylon In-Track Clip Stop
- 1 ea 89/2N Gray Nylon Mortise Guide



### 1. Secure track.

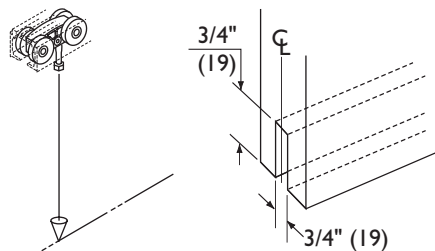
Secure track at each end. Inward brackets should be no more than 2' (61m) from each end and centered on track.

Ensure track is plumb and level.

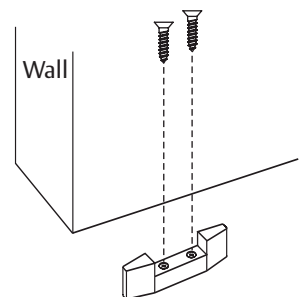


### 2. Mortise door for door guide.

Attach a plumb line to hanger. Remove one end bracket. Place hanger inside track. Using plumb line, mark the centerline of door guide.

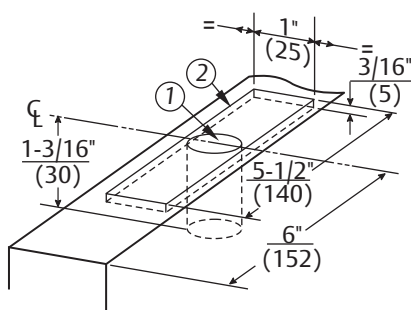


### 3. Fit door guide to floor.

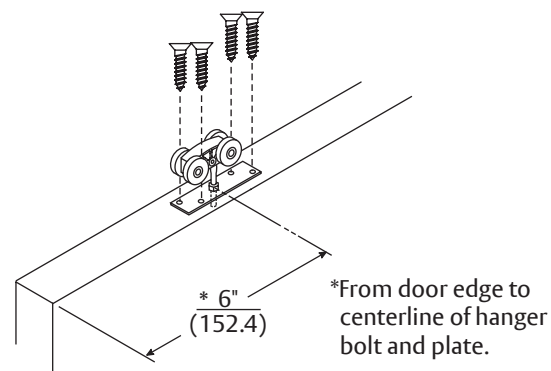


#### 4. Prepare top of door for hanger hardware.

- ① Drill  $\frac{13}{16}$ " (21) dia. x  $1\frac{3}{16}$ " (30) deep hole 6" (152) from door edge to centerline of hole and centered in thickness of door.
- ② Route door for  $\frac{3}{16}$ " (5) thick,  $5\frac{1}{2}$ " (140) long, and 1" (25) wide plate centered on centerline of hole and thickness of door.

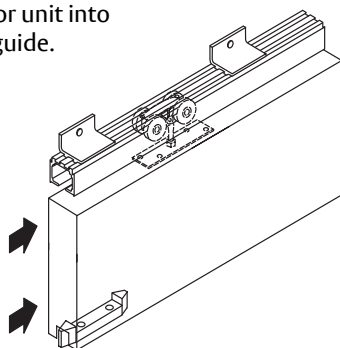


#### 5. Attach hangers to doors.

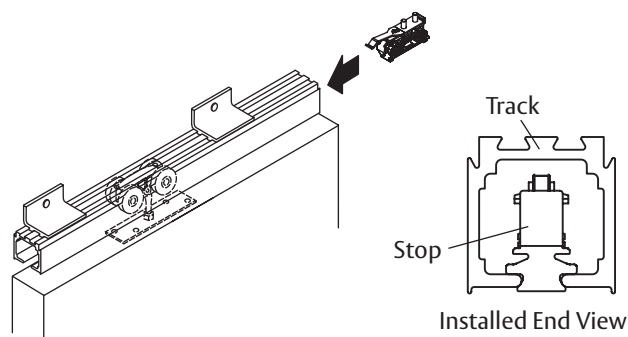


#### 6. Hang door.

Slowly guide complete door unit into track using installed floor guide.



#### 7. Position and secure clip stops.

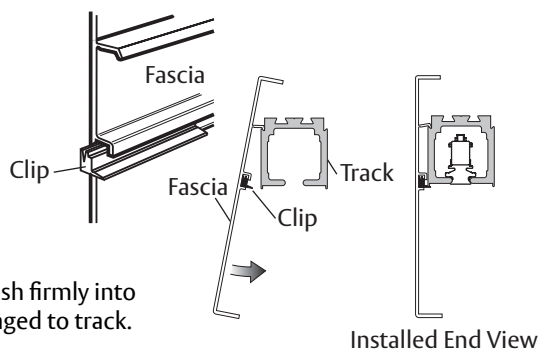


#### 8. Optional fascia installation:

1. Insert polymer clips provided into fascia in correct orientation.

Ensure that clips are placed approximately 24" - 36" (61cm - 91cm) intervals along length of fascia.

2. Hook fascia onto track and push firmly into place. Ensure all clips are engaged to track.



#### IMPORTANT:

Visually check all bolts and screws; tighten if necessary.  
If access door is installed, check operation.  
Check operation of doors for ease.

- Door catches floor guide: Check that the track is level. Ensure that the track and floor guide are parallel to within  $\pm \frac{1}{8}$ " (3).
- Door scrubs: Check that the door is level on hangers.
- Door moves while in operation: Check hangers are installed correctly.