

BROCHURE

**NORTON  
RIXSON**

**ASSA ABLOY**

# DOOR CLOSERS

Experience a safer  
and more open world



## 2800ST



Ideal for applications where both security and accessibility are a priority.

### FEATURES

- Cast aluminum body
- Adjustable spring size 1 through 6
- Door weight: 250 lbs.
- Unique spline arm
- Push and pull side installation, door or frame mounted
- 30-year limited warranty

## 7500



A robust, multi-sized surface closer designed to deliver superior performance and long-term reliability.

### FEATURES

- Cast aluminum closer body
- Adjustable spring sizes 1-6
- Heavy-duty arms: Regular Rigid, Parallel Rigid, CloserPlus®, CloserPlus Spring™ and Unitrol®
- Slide Tracks: push or pull side mounting
- Corrosion resistant model available (specify 7500SS)
- 30-year limited warranty



## 9500



Multi-size cast iron door closer for high-use applications.

### FEATURES

- Cast iron closer body
- Adjustable spring sizes 1-6
- Heavy-duty arms available: Regular Rigid, Parallel Rigid, CloserPlus®, Parallel Rigid Offset and Unitrol®
- Slide Track: push or pull side mounting
- Closer mounting plate for easy installation
- 30-year limited warranty

## 8000



Multi-sized surface closer with a complete range of arms and a sleek, minimal design suited for architectural openings.

### FEATURES

- Cast aluminum closer body
- Adjustable spring sizes 1-6
- Heavy-duty arms available: Parallel
- Rigid, CloserPlus®, CloserPlus Spring™ and Unitrol®
- Available with full or slim line cover
- 30-year limited warranty

## 1600



Fully adjustable door closer for aluminum storefronts and other medium traffic applications.

### FEATURES

- Cast aluminum closer body
- Adjustable sizes (1-6) and fixed sizes (3 or 4) available
- Heavy-duty arms available: Parallel Rigid, CloserPlus®, CloserPlus Spring™, Cushion Stop and Unitrol®
- Corrosion resistant model available (specify 1601SS)
- 30-year limited warranty

## 78-B/F



Potbelly closer ideal for retro look.

### FEATURES

- Cast aluminum closer body
- Adjustable spring power:
  - B/D - Spring size 2, 3, or 4
  - E/F - Spring size 5 and 6
- 10-year limited warranty

Experience a safer  
and more open world

## 1700



Multi-feature closers with compact design, ideal for application on interior doors.

### FEATURES

- Cast aluminum closer body
- Size 3 or 4 depending on installation
- Installs regular arm, parallel arm or top jamb
- 5-year limited warranty

## 410



Attractive retrofit solution for moderate-to-high traffic applications.

### FEATURES

- Cast iron closer body
- Adjustable spring sizes 1-6
- Optional arms: Heavy-duty arm with removable stop, heavy-duty arm with removable stop and spring buffer
- Direct replacement for LCN 4040XP
- 10-year limited warranty

## 210

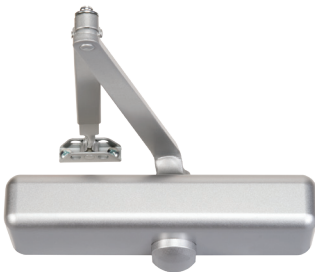


Adjustable door closer for light duty commercial applications.

### FEATURES

- Cast aluminum closer body
- Adjustable spring sizes 1-6
- Full plastic cover
- Optional heavy-duty arm with removable stop
- 10-year limited warranty

## 160



Simple door control for light duty applications.

### FEATURES

- Cast aluminum closer body
- Adjustable sizes (1-4) and fixed size (4) available
- Hold open arms available for 161BF only
- 5-year limited warranty



EPD



HPD

**Declare.**

Declare Labels available

Experience a safer  
and more open world

# NORTON RIXSON CLOSERS COMPARISON



	CAST IRON	
CERTIFICATION & WARRANTY	9500	410
ANSI/BHMA A156.4	Grade 1	Grade 1
UL & ULC Listed	Yes	Yes
Warranty	30 Year	10 Year
End of Life Recycling Program Available	Yes	Yes
SIZE & CONSTRUCTION		
Construction (Body)	Cast Iron	Cast Iron
Mounting Hole Pattern	1" x 10"	2-1/4" x 5"*
Spring Size	Adjustable 1-6	Adjustable 1-6
Closer Body (Handing)	Non-Handed	Non-Handed
Standard Backcheck	Yes	Yes
OPTIONS		
Plastic Cover	Standard	Standard
Metal Cover Option	Optional	No
Slim Line Cover Option	No	No
Delayed Action Option	Yes	Yes
Sex Nuts & Bolts (Tri-Style® pack)	Optional	Standard
Finishes	Multiple	689, 690, BSP
APPLICATION / ARM TYPE AVAILABILITY		
Regular	•	•
Top Jamb	•	•
Parallel	•	•
Regular Rigid	•	
Parallel Rigid	•	
Heavy Duty: HDH/HDN		◦
CloserPlus	•	
CloserPlus Spring		◦
CloserPlus Ramp		
Cushion Stop		
Unitrol	•	
Low Profile		
Slide Track	•	

## NORTON RIXSON CLOSERS COMPARISON

### ALUMINUM

2800ST	7500	8000	1600	1700BC	78B/F	210	160
Grade 1	Grade 1	Grade 1	Grade 1	Grade 3		Grade 1	Grade 1
Yes	Yes	Yes	Yes	Yes	Yes	Yes	Yes
30 Year	30 Year	30 Year	30 Year	5 Year	10 Year	10 Year	5 Year
Yes	Yes	Yes	Yes	Yes	Yes	Yes	Yes
Aluminum	Aluminum	Aluminum	Aluminum	Aluminum	Aluminum	Aluminum	Aluminum
1"x 11-1/8"	2-3/8" x 6-3/4"	3/4" x 12"	3/4" x 9-1/16"	3/4" x 8"	4-1/8" x 1-3/8"	3/4" x 12"	3/4" x 9-1/16"
Adjustable 1-6	Adjustable 1-6	Adjustable 1-6	Adjustable 1-6 Size 3, 4	Size 3 or 4 (depends on installation)	Size 2-4; Size 5 or 6	Adjustable 1-6	Adjustable 1-4 Size 4
Non-Handed	Non-Handed	Non-Handed	Non-Handed	Non-Handed	Handed	Non-Handed	Non-Handed
Yes	Yes	Yes	Yes	Yes	Yes	Yes	Yes
Standard	Standard	Standard	Optional	Optional	No	Standard	Optional
No	Optional	Optional	No	No	No	No	No
No	No	Optional	No	No	No	No	No
No	Yes	Yes	No	No	Yes	No	No
Optional	Optional	Optional	Optional	Optional	Optional	Standard	Standard
Multiple	Multiple	Multiple	Multiple	689, 690	Multiple	689, 690, BSP	689, 690, BSP
	•	•	•	•	•	•	•
	•	•	•	•		•	•
	•	•	•	•	•	•	•
	•	•					
	•	•	•		•		
						o	
	•	•	•				
	•	•	•				
	•	•					
			•				
	•	•	•		•		
	•	•					
•	•	•					

\*Retrofit LCN4040XP

o Specific to Individual Series

Experience a safer  
and more open world

The ASSA ABLOY Group is the global leader in access solutions.  
Every day, we help billions of people experience a more open world.



ASSA ABLOY Opening Solutions leads the development within door openings and products for access solutions in homes, businesses and institutions. Our offering includes doors, frames door and window hardware, mechanical and smart locks, access control and service.

	ARCHITECTURAL		COMMERCIAL					
NORTON RIXSON	LCN	DORMAKABA	Best	FALCON	DESIGN HARDWARE	HAGER	PDQ	CAL ROYAL
2800ST		TS93						
7500 9500	4040XP	8900	EHD9000 HD8000					
8000	1460	8600	HD7000					
1600	1260	7400	SL6000					
78B/F								
410		QDC100			416	5100	7100	DR441
210	1450	QDC200		SC80A	314	5200	5500	CR801
160	1250	QDC300		SC60A	116	5300	3100	500

Note: No products are exactly alike. This cross reference represents our judgement of products that are most similar. Information has been obtained from trade sources. It is not represented nor guaranteed that any product exactly equals any other products.

## PATENTS

[www.assaabloydss.com/patents](http://www.assaabloydss.com/patents)

Since 1880, Norton Rixson door controls have been an integral part of schools, hospitals and businesses around the globe. When you need products and people that perform at the highest level, rely on Norton Rixson – From Open to Close.

### NORTON RIXSON | [WWW.NORTONRIXSON.COM](http://WWW.NORTONRIXSON.COM)

3000 Highway 74 East | Monroe, NC 28112 | Tel: 1 877 974 2255

### ASSA ABLOY OPENING SOLUTIONS DOOR SECURITY SOLUTIONS CANADA | [WWW.ASSAABLOYDSS.CA](http://WWW.ASSAABLOYDSS.CA)

160 Four Valley Drive | Vaughan, Ontario, L4K 4T9 Canada | Tel: 800 461 3007