

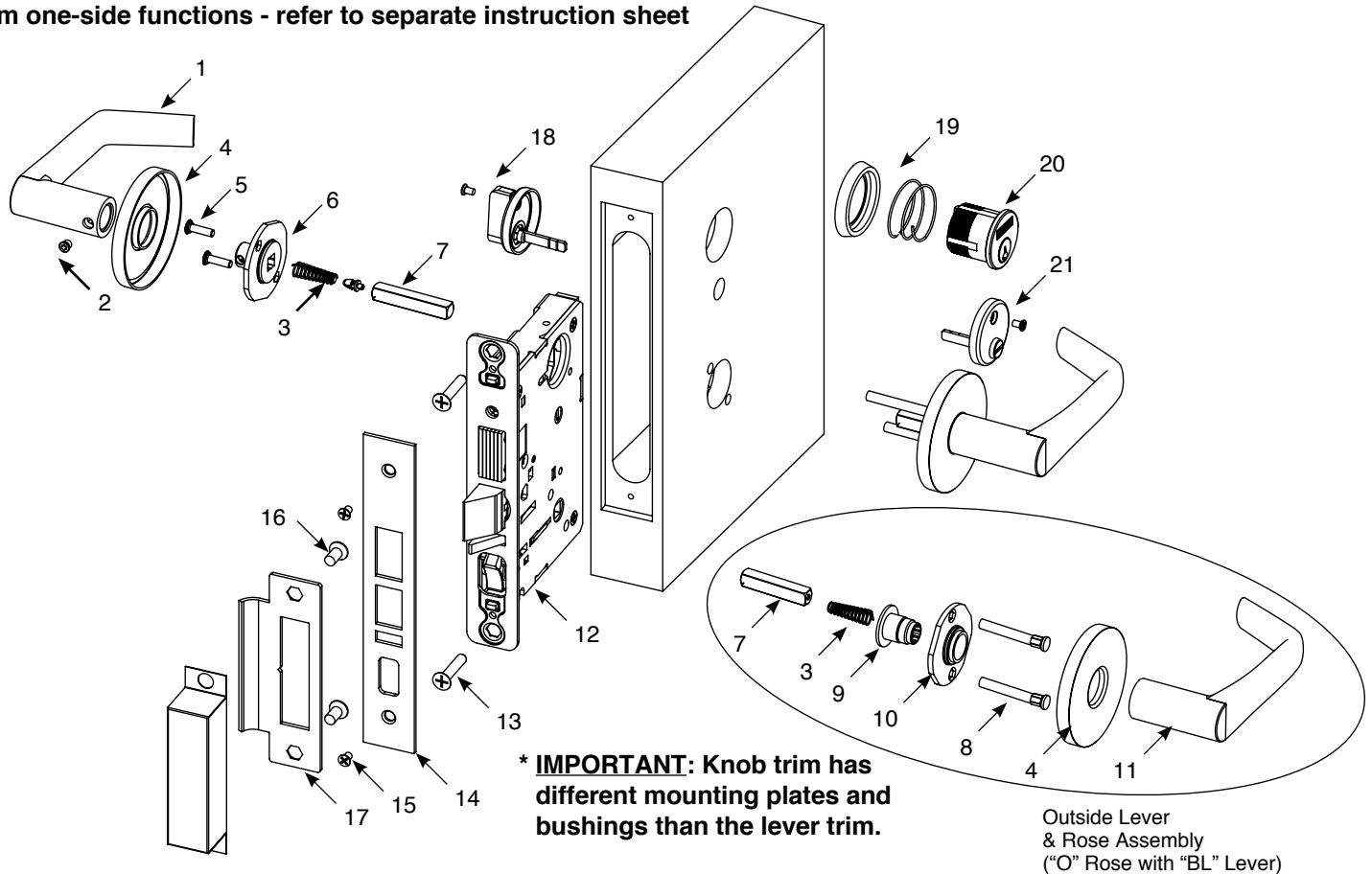
Instructions for Installing SARGENT 7900 Lever or Knob Mortise Lock

Patent pending and/or patent www.assaabloydss.com/patents

SARGENT®

ASSA ABLOY

All trim components shown will vary by function number
Trim one-side functions - refer to separate instruction sheet



	Part #	Description	Req.
1	----	Inside lever/knob (designs vary- some handed)	1
2	82-1038	Lever set screw 10-32 (T20 Torx head)	1
3	82-0347	Lever spring	2
4	----	Rose (designs vary) Escutcheons optional	2
5	01-1495	Machine screw #8-32 x 5/8"	2
*6	82-4577	Inside adapter & plate assembly	1
7	82-0368	Spindle	2
8	81-0723	Through-bolt posts	2
*9	82-0691	Bushing	1
*10	82-4576	Outside mounting plate assy.	1
11	----	Outside lever/knob (designs vary- some handed)	1
12	----	Lockbody (functions vary)	1
13	01-1019	Metal/machine screw #12-24 x1/2"	2
14	----	Outside front plate (functions vary)	1
15	01-1028	Metal/machine screw #8 - 32 x 1/4"	2
16	01-1019	Machine screw # 12 - 24 x 1/2"	2
17	82-0110	Curve lip strike (1-1/4" lip)	1
18	130W	Thumb Turn	1
19	97 Rosette	Cylinder Collar/Rosette	1
20	----	Cylinder-per function only (key systems vary)	-
21	184W	Emergency release 65 & 66 Functions	1

Tools Required:

- Phillips screwdriver (# 2 and # 3 size)
- Flat blade screwdriver
- T20 Torx wrench

Strikes - Standard strike part# 82-0110- 1-1/4" lip x Lip Length x Finish (wrought box strike - optional)

Screw Pack for all lockbodies - Lockbody, front & strike screws (part #77-4236).

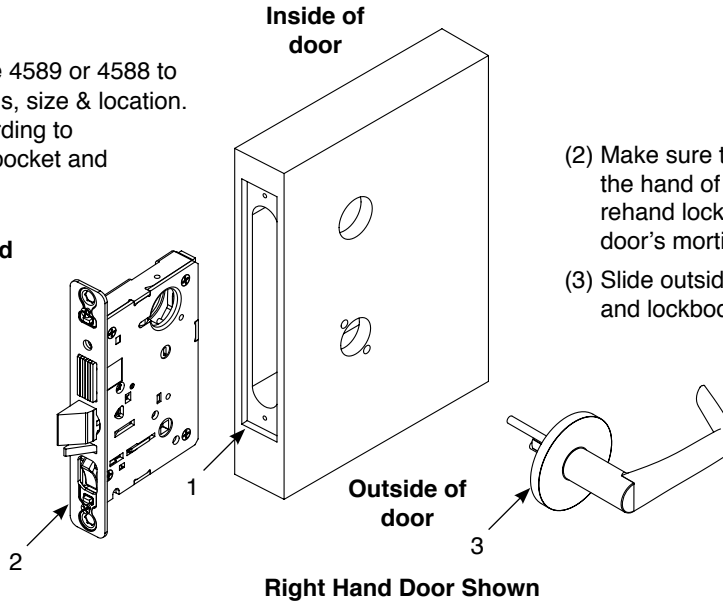
Installation Instructions for 7900 Mortise Locks

See particular trim section for your lock - rose trim shown

SARGENT
ASSA ABLOY

- (1) Important: Check template 4589 or 4588 to prep door for function holes, size & location. Verify strike location according to template. Clean out door pocket and door edge of any debris.

Note: Always keep door held open while installing lock



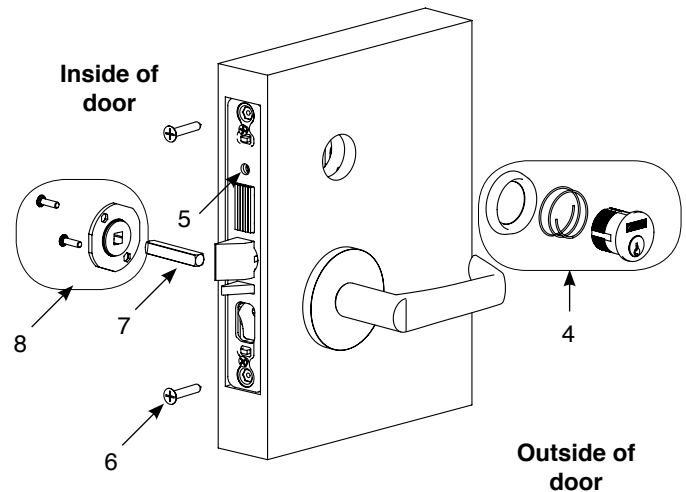
- (2) Make sure the hand of the lockbody match the hand of the door (see page 4 on how to rehand lockbody). Slide lockbody into the door's mortise pocket.
- (3) Slide outside trim assembly through the door and lockbody.

Note: If installing lever/knob on just one side, see separate instruction sheet

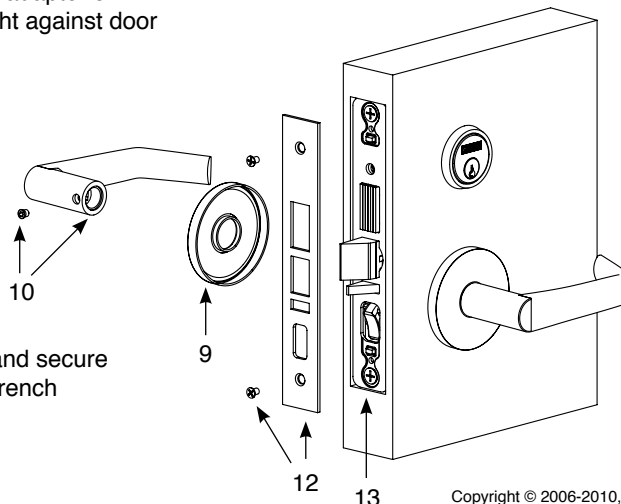
- (4) For cylinder functions; slide cylinder through the spring and collar/rosette; then thread the cylinder into the lockbody until cylinder face is flush with collar/rosette.

Note: SARGENT logo must be horizontal & on the top portion of the cylinder. Standard cylinder for 1-3/4" door is a #41 (1-1/8" length).

- (5) Tighten cylinder clamp screw with a #2 Phillips screwdriver
- (6) Secure lockbody in mortise pocket with two #12 x 1-1/4" for wood doors or two machine screws #12-24 x 1/2" for metal doors.
- (7) Slide spindle into lockbody hub
- (8) Slide inside adapter & plate assembly over spindle & secure with two # 8 -32 x 5/8" screws



- (9) Screw rose onto inside adapter & plate assembly until tight against door (For escutcheons, see instruction page 3)



- (10) Position inside lever and secure set screw with T20 Torx wrench

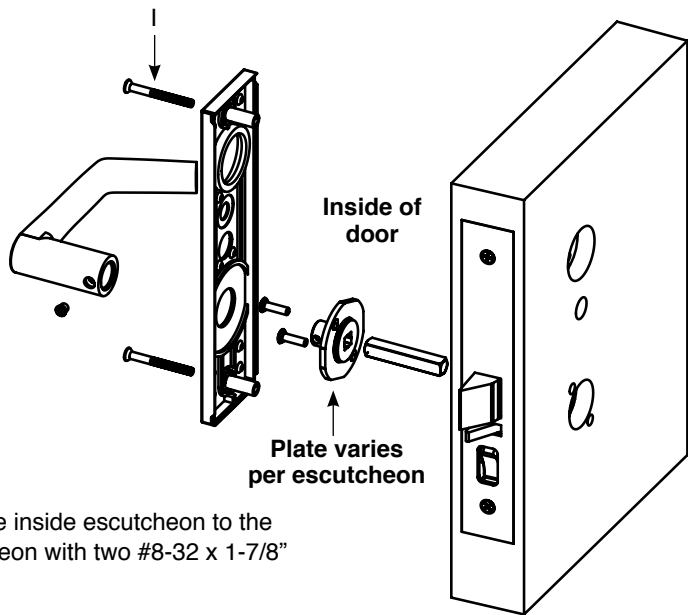
- (11) As required; install thumbturn/emergency release according to instructions on bag
- (12) Attach outside front with two #8-32 x 1/4" flat head screws
- (13) Check lock for proper operation by function number prior to closing door

Note: LFIC and SFIC cylinders require a control key (key stamped with "C") to remove and install the cylinder cores. Not provided standard; must be requested separately.

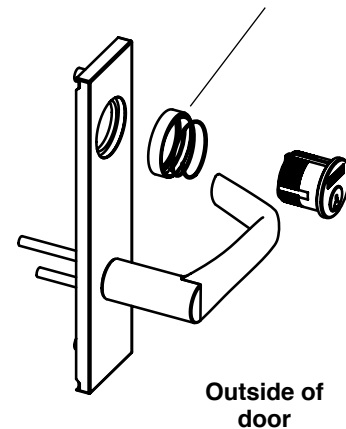
Instructions for CE, LE, TE, KW1 and LW1 Escutcheon

SARGENT

ASSA ABLOY



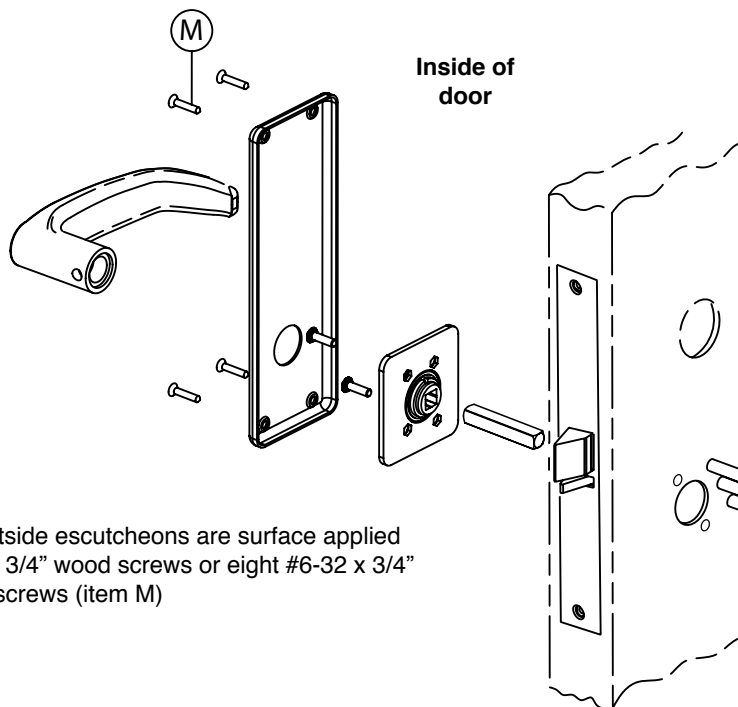
Note: Cylinder collar(s) are required for functions with two cylinders and cylinders longer than # 41 (1-1/8").



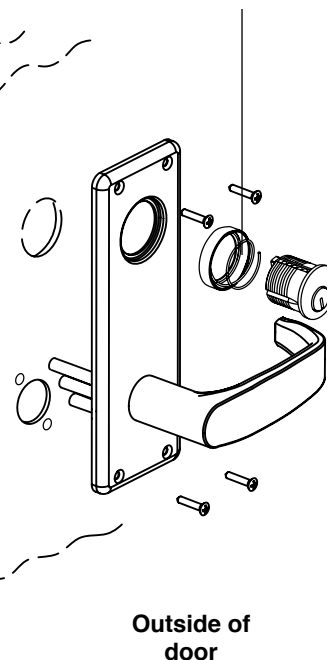
Through-bolt the inside escutcheon to the outside escutcheon with two #8-32 x 1-7/8" screws (item I)

Note: Screw heads should be visible on inside of door only

Instructions for WT Escutcheon



Note: Cylinder collar(s) are required for functions with two cylinders and cylinders longer than # 41 (1-1/8") or doors 1-3/8" thick



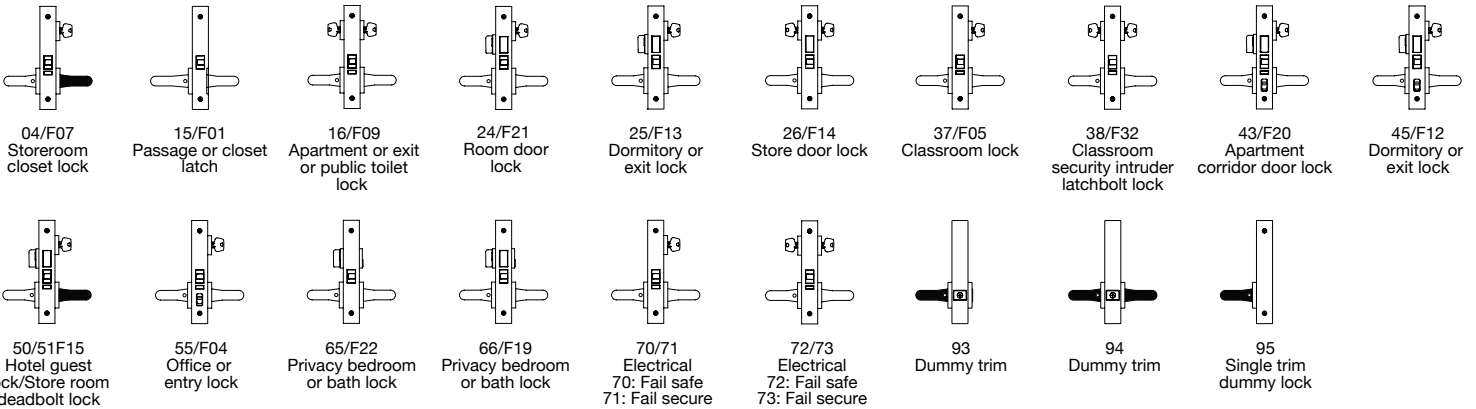
The inside & outside escutcheons are surface applied using eight #6 x 3/4" wood screws or eight #6-32 x 3/4" metal/machine screws (item M)

Copyright © 2006-2010, 2016, Sargent Manufacturing Company, an ASSA ABLOY Group company. All rights reserved. Reproduction in whole or in part without the express written permission of Sargent Manufacturing Company is prohibited.

SARGENT 7900 Mortise Lock Function List

SARGENT®

ASSA ABLOY



Note: Shaded Levers are rigid at all times

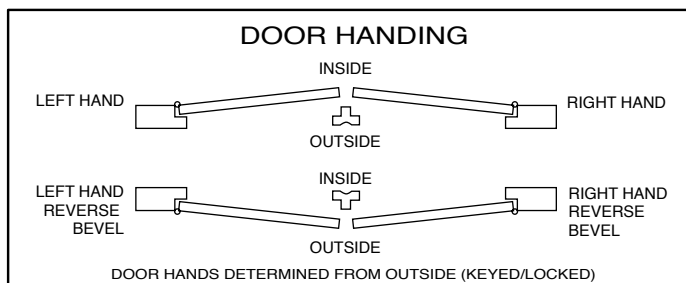
How To Change Hand of Lock

To Change Hand of Locking Piece

1. Position lockbody with red surface of locking piece visible
2. Insert blade type screwdriver into locking piece slot to rotate locking piece
3. Push locking piece toward back of lockbody and rotate 180°, until RED surface shows on opposite side
4. RED indicates locked (outside) side

To Reverse the Bevel of Latchbolt & Deadlatch

1. Remove outside front
2. Rotate latchbolt 180°
3. Replace outside front, which prevents the latch from rotating
4. Flip deadlatch by hand to match bevel of latchbolt



7900 lockbody (right hand shown)

