

Installation Instructions

SARGENT®

ASSA ABLOY

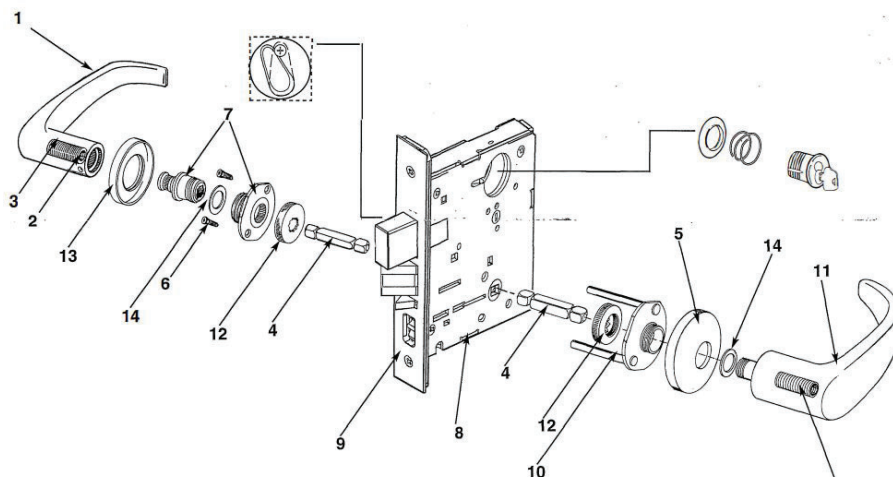
9200 Series Mortise Locks

With Lever/Rose Trim

1. Install Lockbody

Insert lockbody into mortise cutout. Hold loosely in place with (2) lockbody screws.

Do not tighten screws at this time.



PARTS LIST DESCRIPTION

- | | |
|--------------------------|--------------------|
| 1. Inside Lever | 8. Lockbody Unit |
| 2. Setscrew | 9. Outside Front |
| 3. Spring | 10. Mounting Posts |
| 4. Spindle | 11. Outside Lever |
| 5. Outside Rose | 12. Retaining Nuts |
| 6. Screw (2) | 13. Inside Rose |
| 7. Adapter & Plate Assy. | 14. Washer |

2. Install Outside Lever Assembly

A. Insert spindle into outside lever assembly



B. With outside lever horizontal, carefully insert the mounting posts through the door and lockbody. Confirm the spindle is properly engaged with the lock.



C. Insert spindle into square hold on inside of door



D. To secure the adapter and plate assembly to the inside of the door, thread the screws with the lock washers into the mounting posts of the outside lever assembly



⚠ WARNING

This product can expose you to lead which is known to the state of California to cause cancer and birth defects or other reproductive harm. For more information go to www.P65warnings.ca.gov.

⚠ WARNING

Attention Installer: Improper installation may result in damage to the product and void the factory warranty.

1-800-727-5477 • www.sargentlock.com

Copyright © 2009, 2024, SARGENT Manufacturing Company. All rights reserved. Reproduction in whole or in part without the express written permission of SARGENT Manufacturing Company is prohibited. Patent pending and/or patent www.assaabloydss.com/patents. A7146 07/24 Rev 2

Experience a safer
and more open world

3. Install Cylinder

If the cylinder is not included in this function, proceed to step 3E.

- A. Screw cylinder along with cylinder spring and collar into lockbody unit.
- B. After cylinder is screwed into the lockbody unit, flush with the cylinder collar, confirm the cylinder retainer is lined up with the notch on the cylinder and the keyway is vertical.
- C. Tighten the cylinder retainer to prevent unscrewing of the cylinder.
- D. Turn the key in the cylinder to make certain that the locking or latching mechanism functions correctly.
- E. Tighten the lockbody screws.
- F. Secure the outside front plate to the lockbody.
- G. If turn knob and/or emergency button is included, install it now.



SARGENT
ASSA ABLOY

4. Install Inside Lever

- A. Firmly tighten two screws on the inside adapter and plate assembly.
- B. Tighten the rose to the adapter and plate assembly.



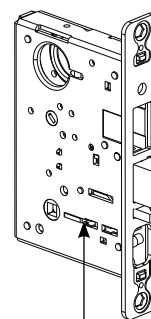
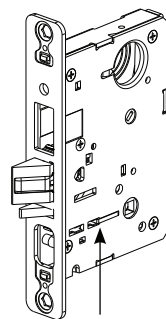
- C. Place inside lever horizontally onto spindle. Tighten with six lobe security screw driver.



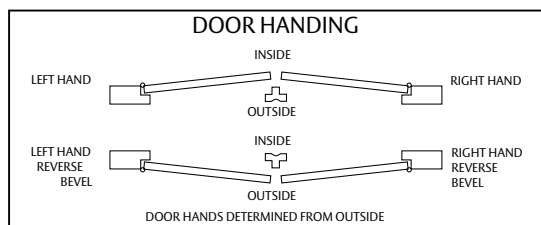
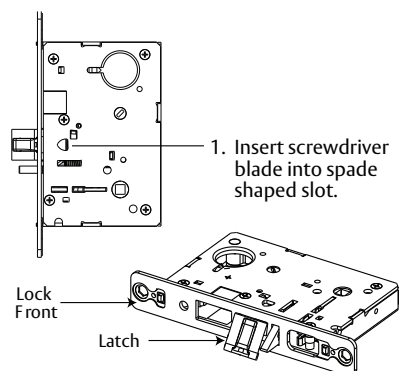
How to Change Hand of Lock

1. Red surface of locking piece must face locked side of door.
 - Position lockbody with red surface of locking piece visible.
 - Insert blade type screwdriver into locking piece slot to rotate locking piece.
 - Push locking piece toward back of lock-body and rotate 180° until red surface shows on opposite side.

Beveled surface of latch must face strike. Deadlatch is self adjusting. To change hand of latch:



To view a video of this step, download a free mobile app and scan the QR code with your mobile device.



2. Rotate screwdriver 90° to push latch out until back of latch clears lock front. Rotate latch 180°. Latch will re-enter lockbody.

NOTE: Latch can not be unscrewed.