

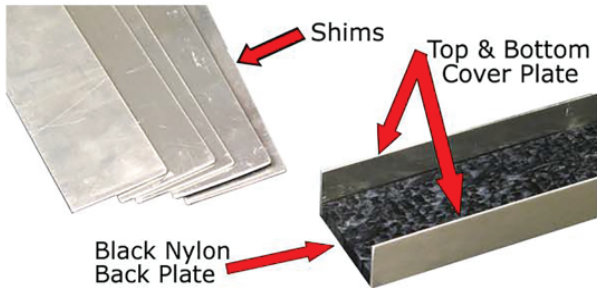
Installation Instructions

SARGENT

ASSA ABLOY

541 Security Shim Kit

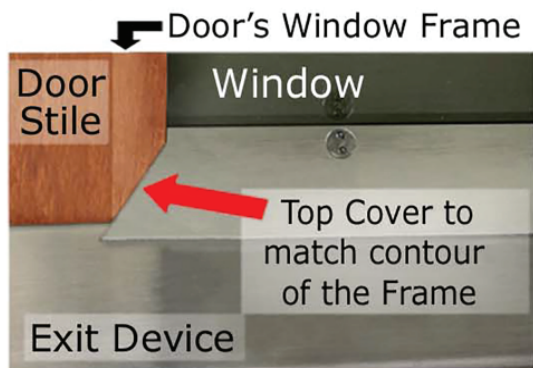
PE80 & 80 Series Exit Devices



SARGENT 541 Security Shim Kit includes:
Shims; Top & Bottom Cover Plates; Black Nylon Back Plate and Spanner Head Screws.



1) Measure door's recessed area.
Cut Top & Bottom Covers to match/
accommodate the contour of the
recessed area or the shape of the
window frame



2) Cut the Black Nylon Back Plate and Shims
to fit under the rail assembly; Match the
contoured ends to the recessed area or
the window frame. Remove all burrs



3) Attach finished Bottom Cover to Black
Nylon Back Plate with supplied screws



4) Slide the assembled kit into
position from the underside
of the rail



5) Insert supplied shims to fill
the gap between the backside
of the rail and the Black Nylon
Back Plate
Note: Do not force fit shims



6) Attach the Top Cover with
supplied screws to capture
the shims and secure the
Shim Kit Assembly