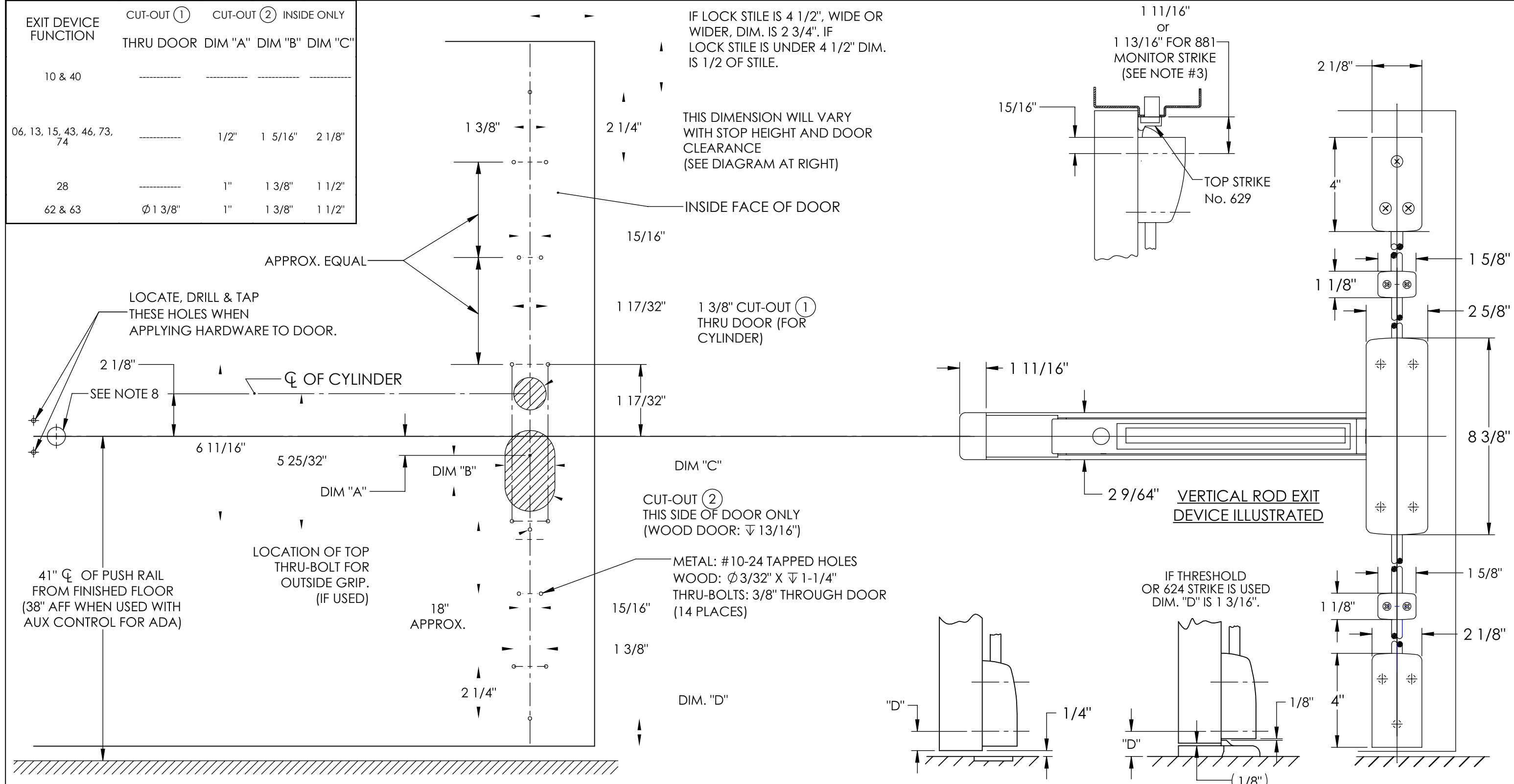


EXIT DEVICE FUNCTION	CUT-OUT ① THRU DOOR DIM "A"	CUT-OUT ② INSIDE ONLY DIM "B" DIM "C"
10 & 40	-----	-----
06, 13, 15, 43, 46, 73, 74	-----	1/2" 1 5/16" 2 1/8"
28	-----	1" 1 3/8" 1 1/2"
62 & 63	Ø 1 3/8"	1" 1 3/8" 1 1/2"



- NOTES:
1. TOLERANCE ON ALL DIMENSIONS ±1/64.
 2. WE RECOMMEND THAT ALL TAPPED HOLES BE DRILLED AND TAPPED IN FIELD.
 3. SEE STRIKE TEMPLATE No. 4009 FOR 646 (TOP) AND 624, 655 (BOTTOM).
 4. SEE MASTER SHEET No. 4019 FOR AREAS REQUIRING REINFORCEMENTS.
 5. SURFACE OF DOOR WHERE EXIT DEVICE IS TO BE APPLIED MUST BE FLUSH.
 6. FOR GLASS BEADED DOORS, IF GLASS BEAD CAN NOT BE REMOVED, USE SHIM KIT 587.
 7. SEE TEMPLATE NO. 4569 FOR ELECTROLYNX DETAILS WHEN NEEDED.
 8. FOR ET TRIM SEE TEMPLATE 4277.
 9. FOR NB- (LESS BOTTOM ROD) OPTION, REFERENCE TEMPLATE 4297

ASSA ABLOY
Operating No. 8700

DOOR MANUFACTURERS TEMPLATE: FOR VERTICAL ROD EXIT DEVICE 8700	RELEASE DATE JUNE 20, 2025 TEMPLATE NO. 4289
--	---