

7900 Series Overhead Concealed Door Closer

Models 7900H-B, 7900H-CP & 7900H-OP, Hold Open

Standard Butt Hinges or Center & Offset Pivots

Installation Instructions

**NORTON
RIXSON**

ASSA ABLOY

⚠ WARNING

This product can expose you to lead which is known to the state of California to cause cancer and birth defects or other reproductive harm. For more information go to: www.P65warnings.ca.gov.

CAUTION

An incorrectly installed or improperly adjusted door closer can cause property damage or personal injury. These instructions should be followed to avoid the possibility of misapplication or misadjustment.

READ AND FOLLOW ALL INSTRUCTIONS.
SAVE THESE INSTRUCTIONS.

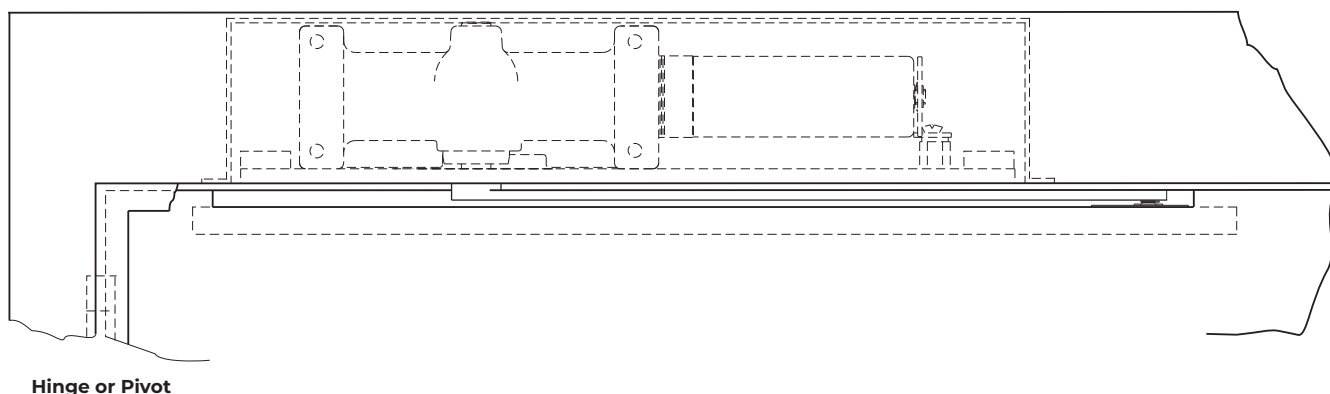
NOTES:

- For wood or metal doors, 1-3/4" to 2-1/4" (45mm to 57mm) thick, hung in hollow metal frame.
- Removable frame stop required unless frame rabbet exceeds 2-3/16" (56mm) - (Not shown).

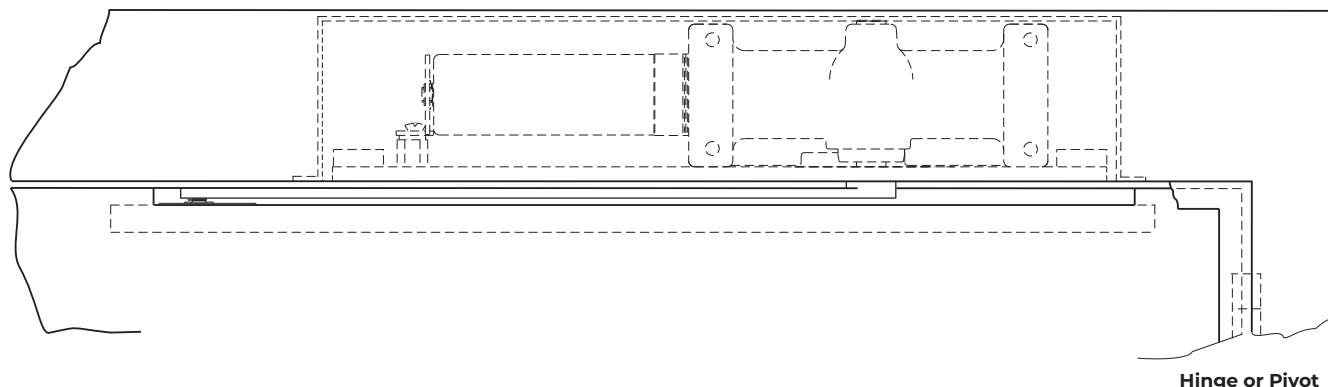
Typical Installation:

- One (1) track & closer position for all door opening angles.
- Easy arm attachment.

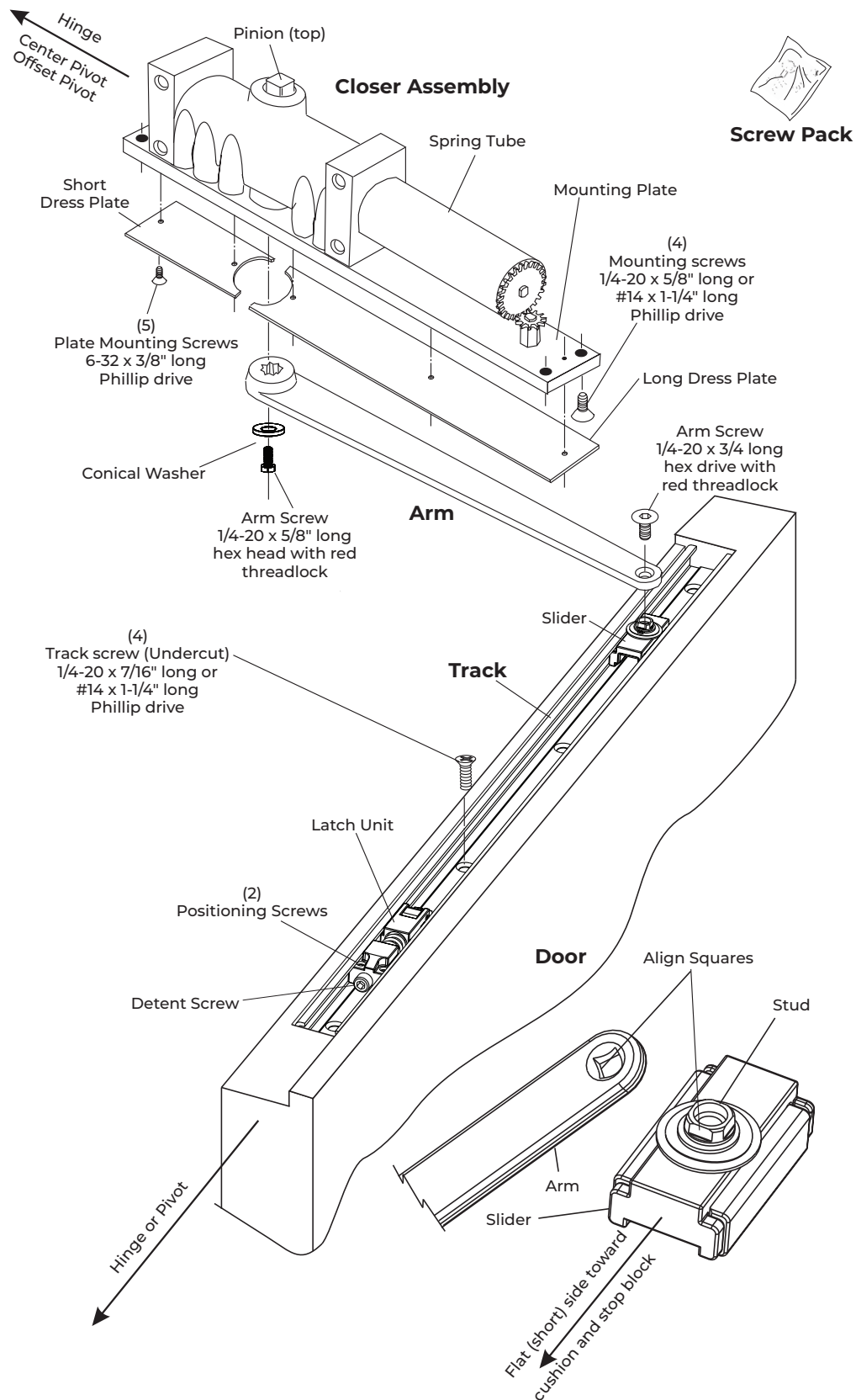
Left Hand Door - LH
Right Hand Reverse - RHR



Right Hand Door - RH
Left Hand Reverse - LHR

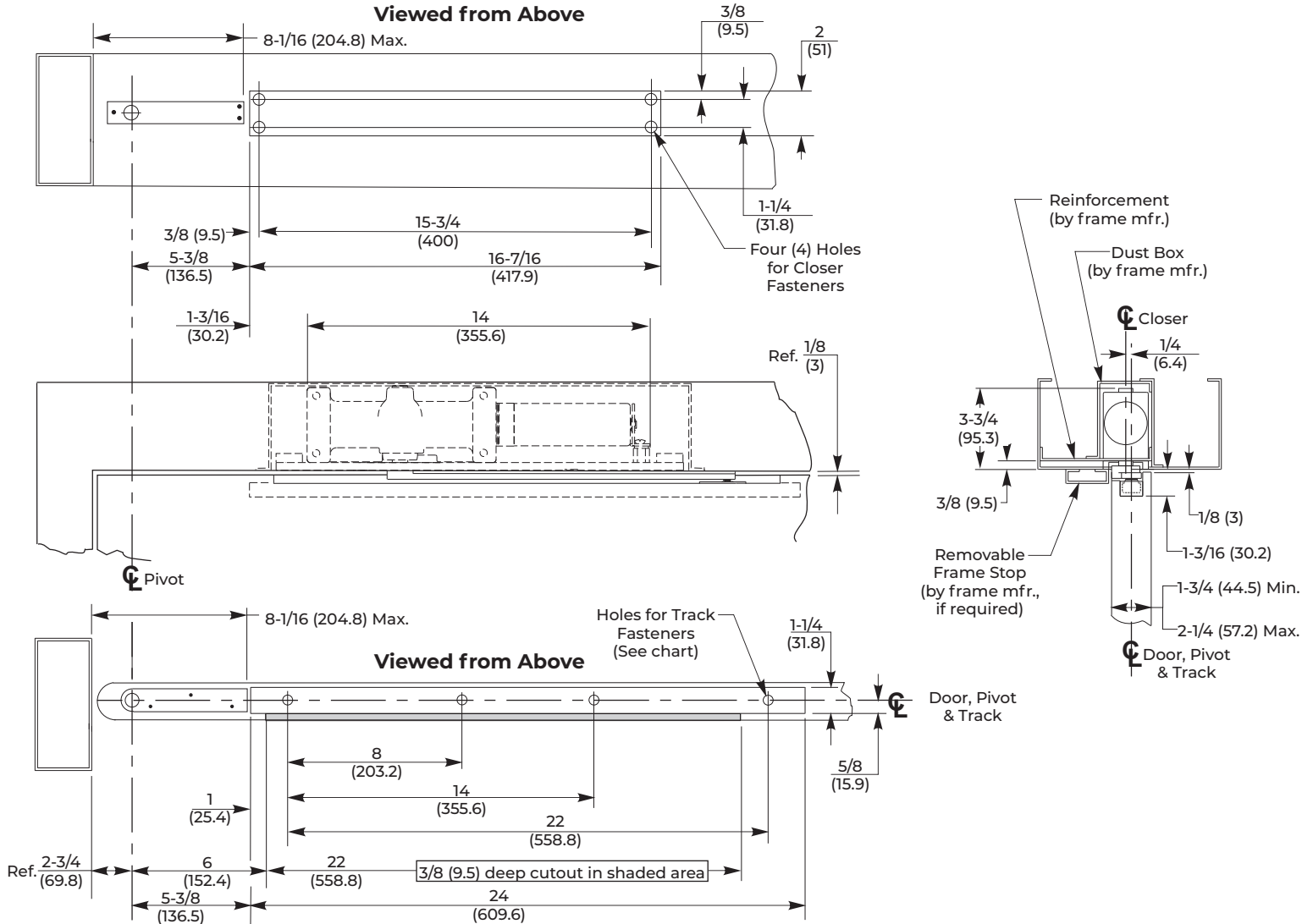


Assembly Components



Standard Butt Hinges, Center or Offset Pivots

Template: Model 7900H-CP with Center Pivots



NOTES:

- Do not scale drawing.
- Left Hand door shown.
- Hardware dimensions shown (not cutouts).
- Dimensions are in inches (mm).
- Maximum door swing is 95°. Auxiliary door stop (not supplied) is required for this application.
- Standard track is 24" (610mm) long.
- For doors less than 33" (838.2mm) wide. Contact factory for modification requirements.

Fastener	Use	⌀ Preparation
1/4-20 Machine Screw	Metal frame & Metal door	#7 (0.201" dia.) or 5.10mm drill 1/4-20 tap
#14 Wood Screw	Wood Door	7/32" or 5.5mm drill

Maximum Hold Open Angle	Dead Stop
100°	105°

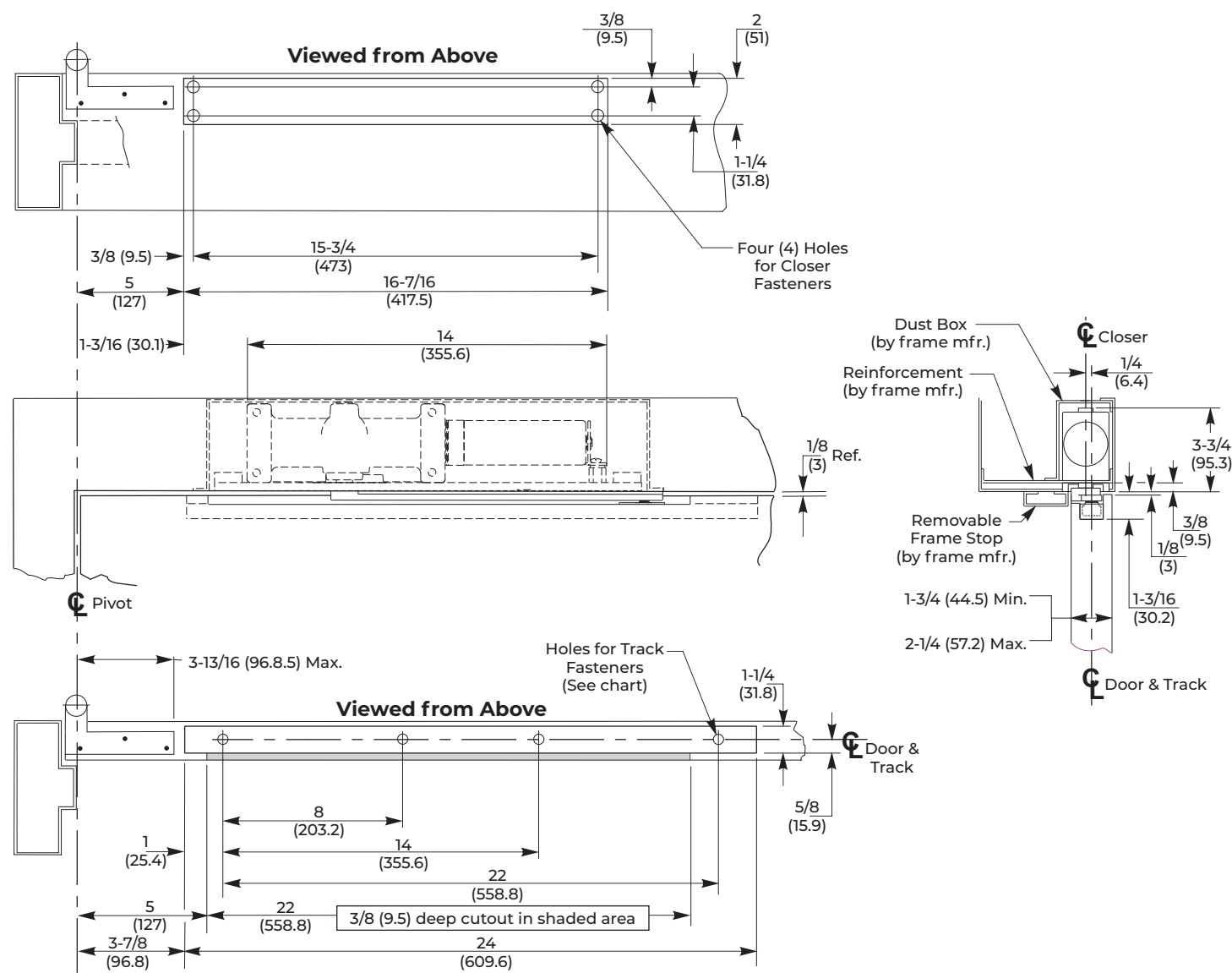
See Installation Sequence on page 6.

Models 7900H-B, 7900H-CP & 7900H-OP, Hold Open

Standard Butt Hinges, Center or Offset Pivots



Template: Model 7900H-OP with Offset Pivots



- NOTES:**
- Do not scale drawing.
 - Left Hand door shown.
 - Hardware dimensions shown (not cutouts).
 - Dimensions are in inches (mm).
 - Standard track is 24" (610mm) long.
 - For doors less than 29" (736.6mm) wide. Contact factory for modification requirements.

Fastener	Use	⌀ Preparation
1/4-20 Machine Screw	Metal frame & Metal door	#7 (0.201" dia.) or 5.10mm drill 1/4-20 tap
#14 Wood Screw	Wood Door	7/32" or 5.5mm drill

Maximum Hold Open Angle	Dead Stop
95°	100°

See Installation Sequence on page 6.

Installation Sequence

1. Determine hand of door.

Refer to page 1. Closers are handed. Hand of closer must match hand of door.

2. Use the template dimensions, locate and prepare holes and cutout in frame and door.

Refer to Template: Model 7900H-B with Standard Butt Hinges on page 3.

Refer to Template: Model 7900H-CP with Center Pivots on page 4.

Refer to Template: Model 7900H-OP with Offset Pivots on page 5.

Prepare the frame for mounting closer.

Drill and tap four (4) holes for 1/4-20 machine screws or #14 wood screws.

Prepare door for track.

Prepare four (4) holes for 1/4-20 machine screws or #14 wood screws.

NOTE: Generally on new construction hardware cutouts are pre-made by suppliers.

3. Mount closer to frame.

Position spring tube away from hinge or pivot and mounting plate flush with frame rabbet.

Secure with 1/4-20 x 5/8 or #14 1-1/4 Phillip drive mounting screws.

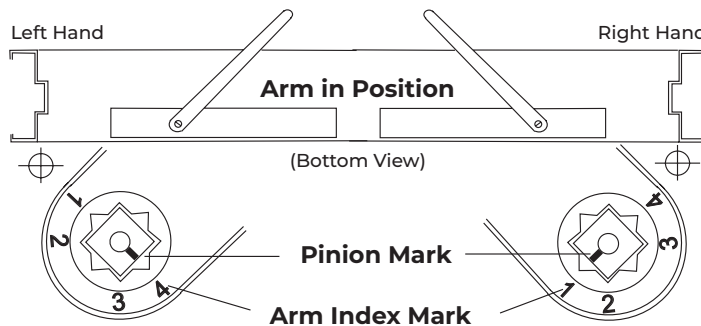
4. Install arm on closer pinion. (see illustration below)

With arm counterbore facing down, align arm index mark with pinion index mark.

– Left Hand Door: Index Mark 4

– Right Hand Door: Index Mark 1

Install arm onto pinion. Secure with washer and 1/4-20 x 5/8" long hex head arm screw with red threadlock.



5. Install track on door.

Place the assembled track into door cutout with open side up, cushion and stop block toward the hinge or pivot. Move slider to the opposite end of track (see illustration on page 2). Secure track with (4) 1/4-20 undercut machine screws or #14 wood screws.

6. Connect arm to track.

Open door to approximately 5" (127mm), rotate arm to slider and place end on stud. Use a screw driver through arm square to align slider's stud square with the arm square (see illustration on page 2). Push down on arm to seat stud and to prevent stud from rotating. Secure with arm screw, 1/4-20 x 3/4" long flat head hex drive with red threadlock.

7. Determine door opening angle.

Refer to pages 3, 4, and 5.

8. Set door opening angle.

– With latch unit free, open door until slider and hold open unit are latched.

– Move door to hold open angle and secure latch unit by tighten 2 positioning screws with 1/8" hex wrench (supplied).

– Turn the detent screw clockwise to increase and counter clockwise to decrease hold open force with 3/16" hex wrench (supplied). Leave approximate 1" clearance from end of track for hex wrench to adjustment detent.

– Release door.

9. Adjust closer.

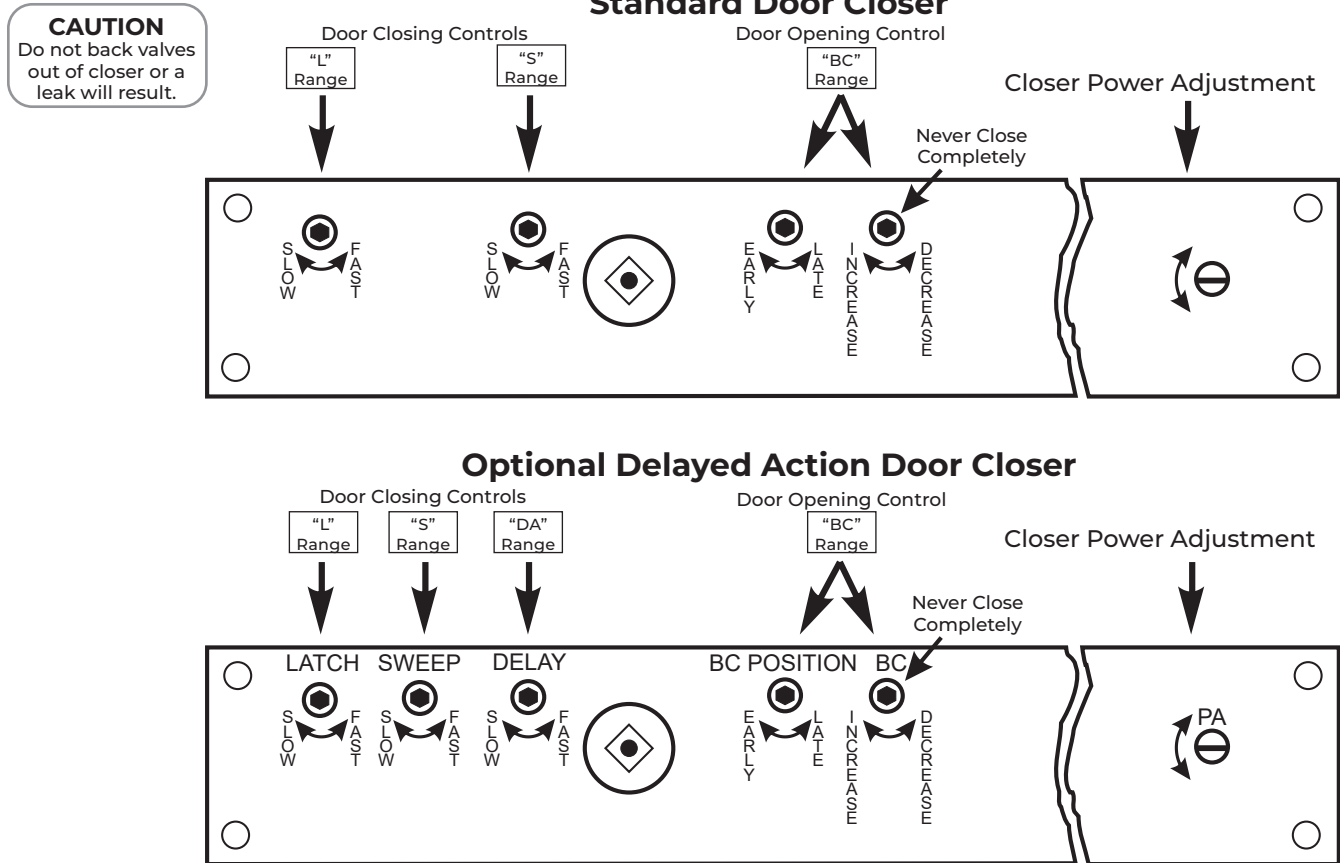
Refer to page 6. Once adjusted, install dress plates (see illustration on page 2).

NOTE: Hold Open Devices can not be installed on fire rated doors.

Models 7900H-B, 7900H-CP & 7900H-OP, Hold Open

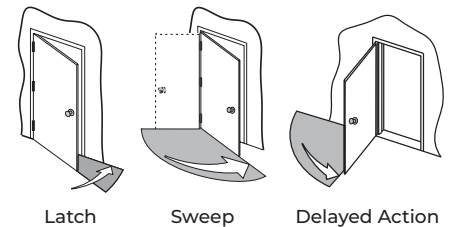
Standard Butt Hinges, Center or Offset Pivots

Closer Adjustment

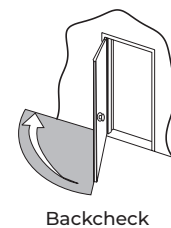


- Closer Controls:**
 Closer controls are accessible through mounting plate for closer adjustment. Use 1/8" (3mm.) hex-key for valve adjustments. Use a standard screwdriver for power adjustment.
- Power Adjustment:**
 Power Adjustment permits increasing door closing force. Controlled by slotted screw marked "PA."
- Closing Speed:**
 Closing Speed controlled by valves marked "SWEEP" and "LATCH".
ATTENTION: Adjust closing speed time to between 4 to 7 seconds from 90°. Use of the door by people with disabilities, elderly, or small children may require greater closing time.
- Delayed Action:**
 Delayed Action option permits door to creep from fully open to about 70°. Creeping time controlled by valve marked "DELAY".
- Backcheck:**
 Backcheck cushions or slows the opening of a door that is forced to travel faster than conditions require. Backcheck controlled by valves marked "BC POSITION" (open for backcheck start at a greater door opening angle) and "BC" (for adjusting backcheck intensity). Never close BC valve completely.
- Optional Enhanced Backcheck:**
 Optional Enhanced Backcheck provides adjustable backcheck intensity beginning at approximately 15° of the door opening cycle. Backcheck positioning valve is omitted when this feature is provided.
- Install Dress Plate:**
 Refer to page 2.

Closing Controls



Opening Controls



The ASSA ABLOY Group is the global leader in access solutions. Every day we help people feel safe, secure and experience a more open world.



ASSA ABLOY

Technical Product Support:
Monroe, NC 28112 USA
Phone: 877.974.2255 ext: 2
Techsupport.NortonRixson@assaabloy.com
NortonRixson.com

Norton Rixson is a brand associated with ASSA ABLOY Accessories and Door Controls Group, Inc., an ASSA ABLOY Group company.
Copyright © 2001, 2014, 2024, 2025, ASSA ABLOY Accessories and Door Controls Group, Inc. All rights reserved. Reproduction in whole or in part without the express written permission of ASSA ABLOY Accessories and Door Controls Group, Inc. is prohibited.

Approved 2025-07-31

80-9379-1203-020 Rev 4 08/25