

7900 Series Overhead Concealed Door Closer

Models 7970DPS-B & 7970DPS-OP, Non-Hold Open

Security Door Closer with Door Position Switch,
Standard Butt Hinges or Offset Pivots

Installation Instructions

**NORTON
RIXSON**

ASSA ABLOY

⚠ WARNING

This product can expose you to lead which is known to the state of California to cause cancer and birth defects or other reproductive harm. For more information go to: www.P65warnings.ca.gov.

CAUTION

An incorrectly installed or improperly adjusted door closer can cause property damage or personal injury. These instructions should be followed to avoid the possibility of misapplication or misadjustment.

READ AND FOLLOW ALL INSTRUCTIONS.
SAVE THESE INSTRUCTIONS.

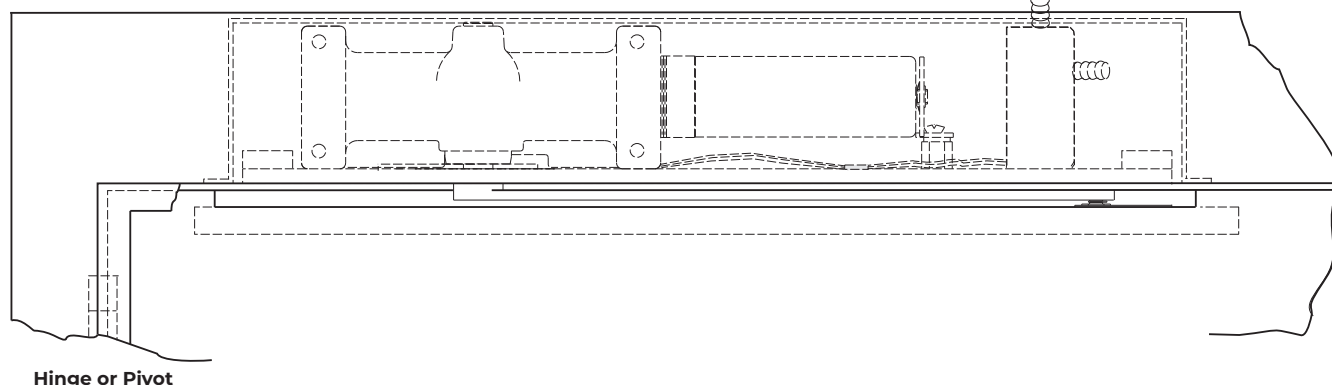
NOTES:

- For wood or metal doors, 1-3/4" to 2-1/4" (45mm to 57mm) thick, hung in hollow metal frame.
- Removable frame stop required unless frame rabbet exceeds 2-3/16" (56mm).

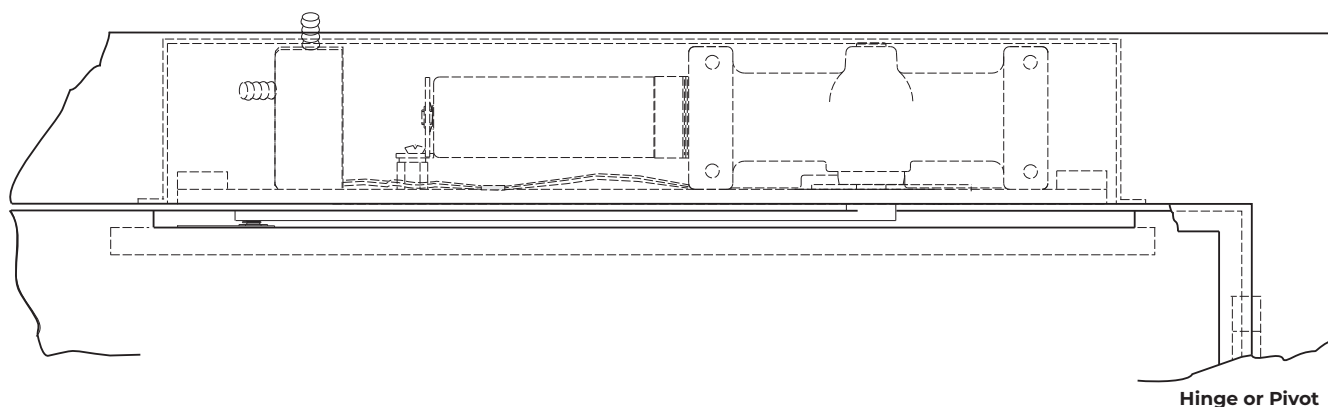
Typical Installation:

- One (1) track & closer position for all door opening angles.
- Easy arm attachment.

Left Hand Door - LH
Right Hand Reverse - RHR



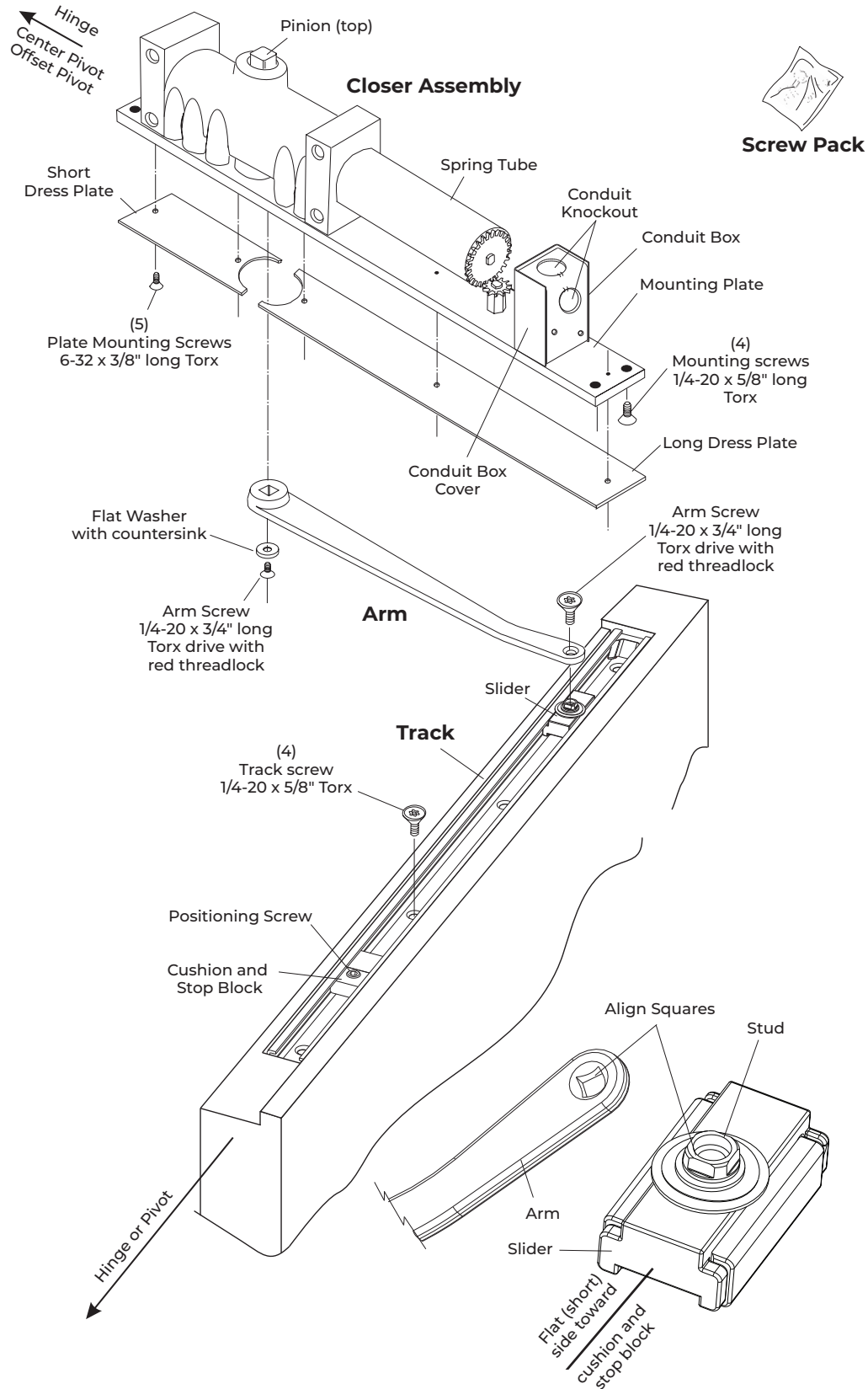
Right Hand Door - RH
Left Hand Reverse - LHR



Models 7970DPS-B & 7970DPS-OP, Non-Hold Open

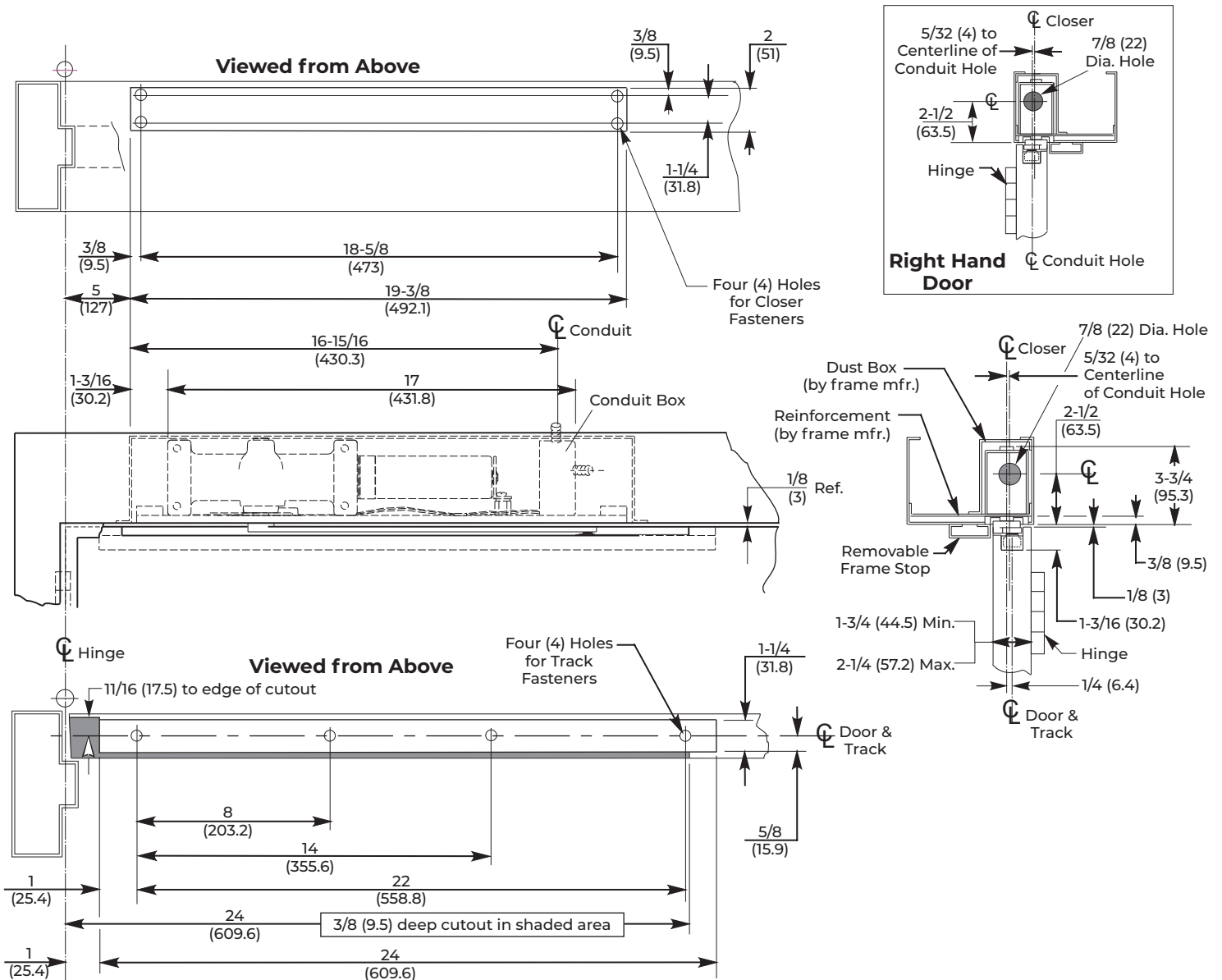
Security Door Closer with Door Position Switch,
Standard Butt Hinges or Offset Pivots

Assembly Components



Security Door Closer with Door Position Switch, Standard Butt Hinges or Offset Pivots

Template: Model 7970DPS-B with Standard Butt Hinges



NOTES:

- Do not scale drawing.
- Left Hand door shown.
- Hardware dimensions shown (not cutouts).
- Dimensions are in inches (mm).
- Minimum door width: 27" (685.8mm)
- Track: 24" (610mm)
- Maximum width hinge: 5" (127mm)

Fastener	Use	⌀ Preparation
1/4-20 Machine Screw	Metal frame & Metal door	#7 (0.201" dia.) or 5.10mm drill 1/4-20 tap
#14 Wood Screw	Wood Door	7/32" or 5.5mm drill

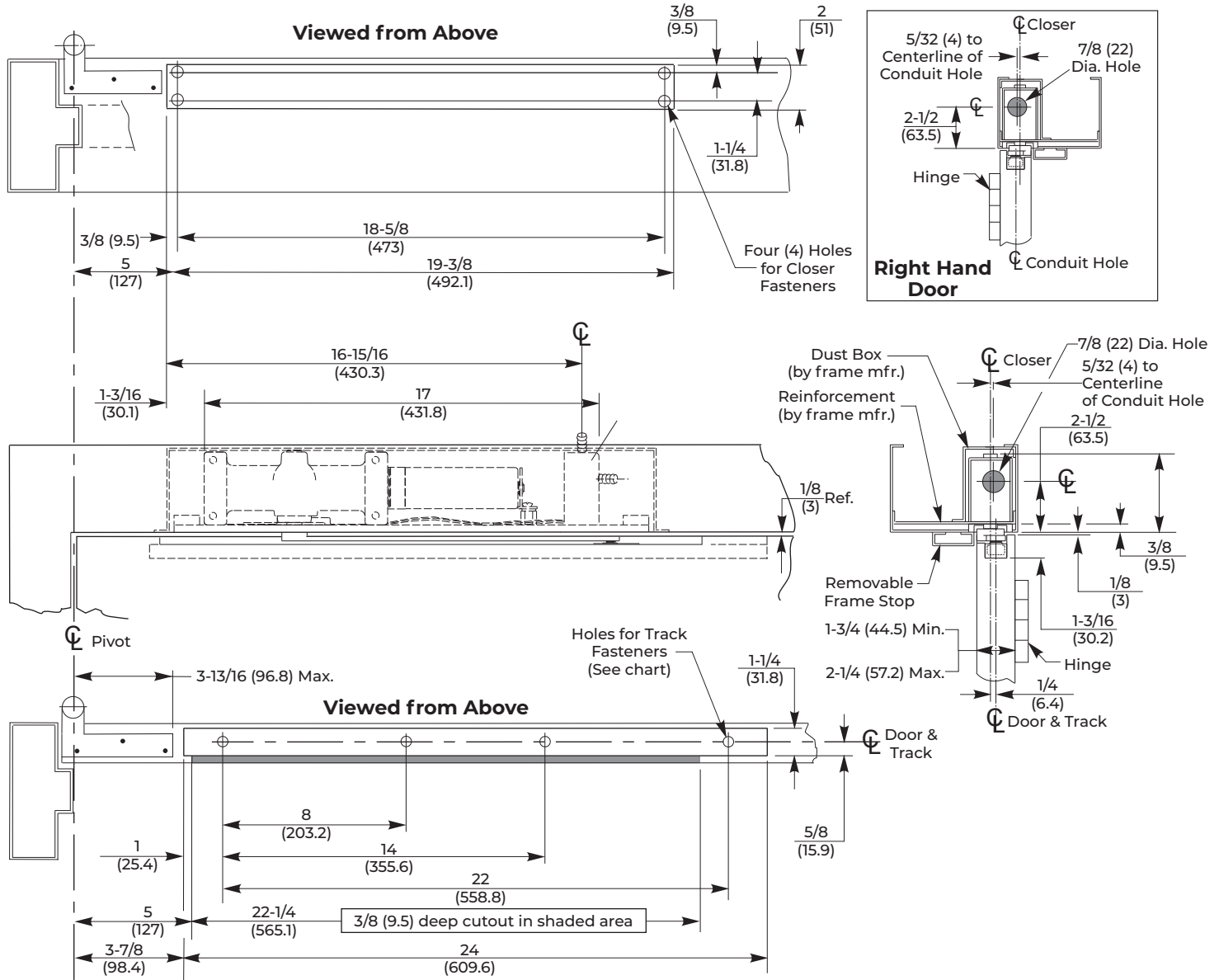
Track Installation	Door Angle		Auxiliary Door Stop Required
	110°	180°	
Non-Hold Open	With Cushion & Stop Block	Without Cushion & Stop Block	Opening greater than 110°

See Installation Sequence on page 5.

Models 7970DPS-B & 7970DPS-OP, Non-Hold Open

Security Door Closer with Door Position Switch,
Standard Butt Hinges or Offset Pivots

Template: Model 7970DPS-OP with Offset Pivots



NOTES:

- Do not scale drawing.
- Left Hand door shown.
- Hardware dimensions shown (not cutouts).
- Dimensions are in inches (mm).
- Maximum door swing is 95°. Auxiliary door stop (not supplied) is required for this application.
- Standard track is 24" (610mm) long.
- For doors less than 29" (736.6mm) wide. Contact factory for modification requirements.

Fastener	Use	⌀ Preparation
1/4-20 Machine Screw	Metal frame & Metal door	#7 (0.201" dia.) or 5.10mm drill 1/4-20 tap
#14 Wood Screw	Wood Door	7/32" or 5.5mm drill

See Installation Sequence on page 5.

Models 7970DPS-B & 7970DPS-OP, Non-Hold Open

Security Door Closer with Door Position Switch,
Standard Butt Hinges or Offset Pivots

Installation Sequence

1. Determine hand of door.

Refer to page 1. Closers are handed. Hand of closer must match hand of door.

2. Use the template dimensions, locate and prepare holes and cutout in frame and door.

Refer to Template: Model 7970DPS-B with Standard Butt Hinges on page 3.

Refer to Template: Model 7970DPS-OP with Offset Pivots on page 4.

Prepare the frame for mounting closer.

Drill and tap four (4) holes for 1/4-20 machine screws or #14 wood screws.

Prepare door for track.

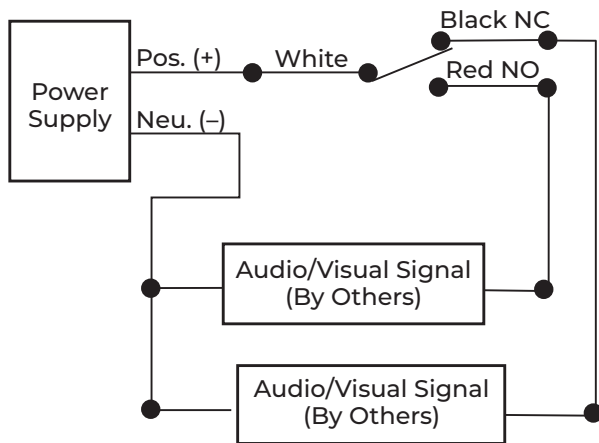
Prepare four (4) holes for 1/4-20 machine screws or #14 wood screws.

NOTE: Generally on new construction, hardware cutouts are pre-made by suppliers.

3. Wire the Switch

NOTE: Wiring of the switch must be in accordance with N.E.C. Class 2 wiring specifications.

- Remove closer's conduit box cover.
- Anchor conduit to closer's conduit box.
- Make wire connections to terminal strip.
- Switch is momentary contact single pole double throw: (see graphic below)
 - Red lead from switch is open contact (Open circuit when door is closed).
 - Black lead from switch is closed contact (Closed circuit when door is closed).
 - White lead from switch connects to power input.
- Replace conduit box cover.

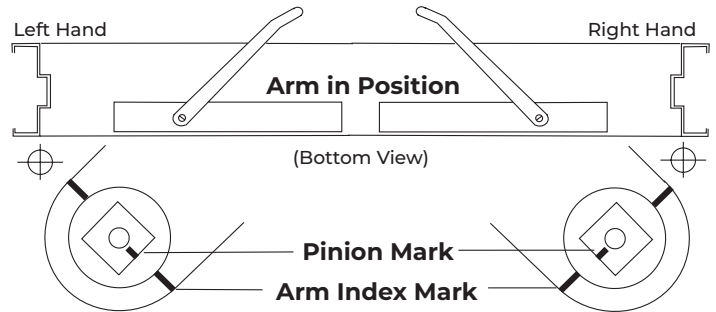


4. Mount closer to frame.

Position spring tube away from hinge or pivot and mounting plate flush with frame rabbet. Secure with 1/4 -20 x 5/8" torx drive mounting screws.

5. Install arm on closer pinion. (see illustration below)

With arm counterbore facing down, align arm index mark with pinion index mark. Install arm onto pinion. Secure with washer and 1/4-20 x 3/4" long flat head torx drive arm screw with red threadlock.



6. Install track on door.

Place the assembled track into door cutout with open side up, cushion and stop block toward the hinge or pivot. Move slider to the opposite end of track (see illustration on page 2). Secure track with (4) 1/4-20 machine screws.

7. Connect arm to track.

Open door to approximately 5" (127mm), rotate arm to slider and place end on stud. Use a screwdriver to align the square on the slider's stud with the arm square (see illustration on page 2). Push down on arm to seat stud and to prevent stud from rotating. Secure with arm screw, 1/4-20 x 3/4" long flathead torx drive with red threadlock.

8. Determine door opening angle.

Refer to pages 3 and 4.

9. Set door opening angle.

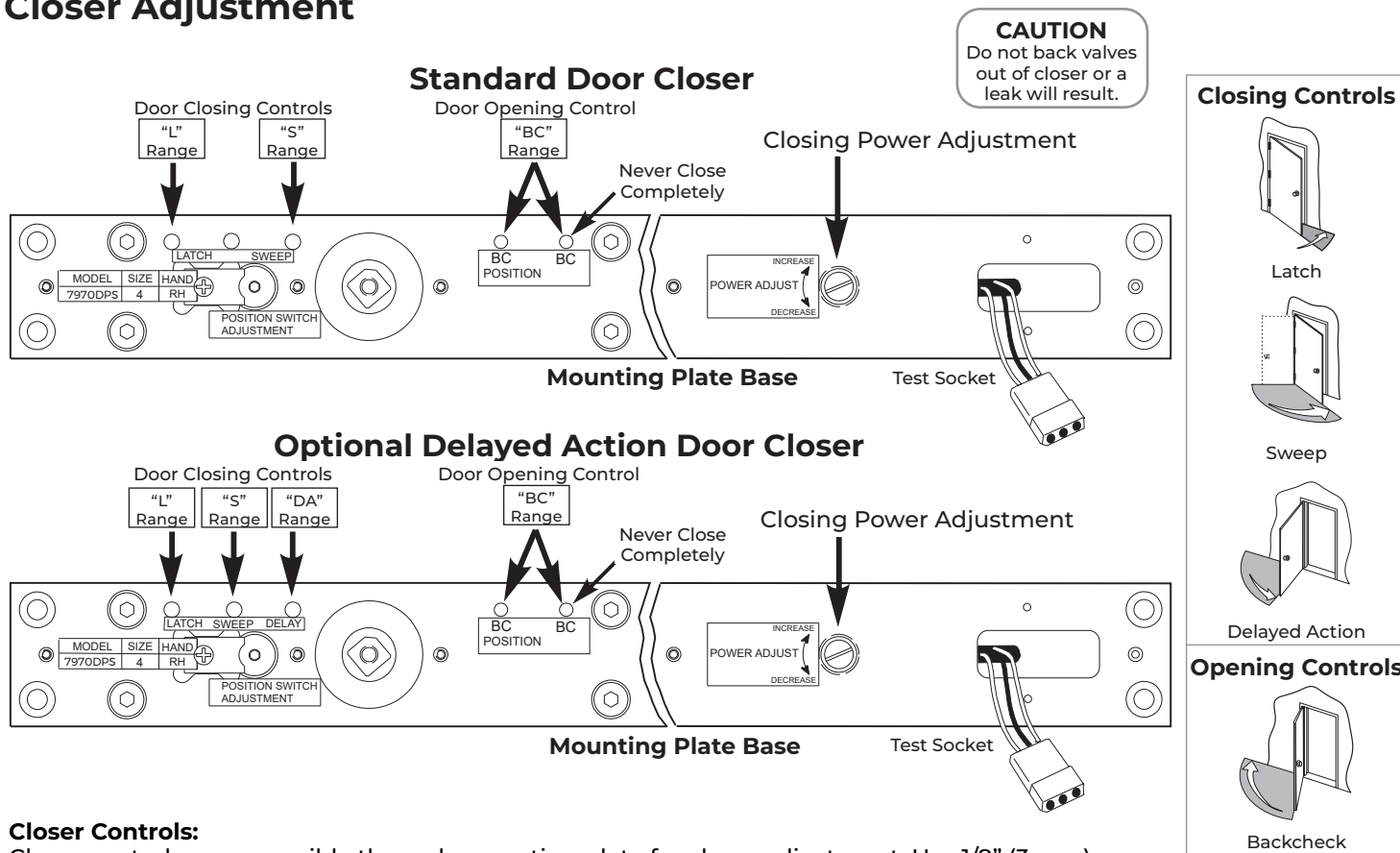
Open the door to the desired angle. With the door held at that position, slide cushion and stop block against slider. Tighten the stop position screw (large set screw) with the 3/16" hex wrench (provided) until secure. Release door.

10. Adjust closer.

Refer to page 6. Once adjusted, install dress plate.

The ASSA ABLOY Group is the global leader in access solutions. Every day we help people feel safe, secure and experience a more open world.

Closer Adjustment



- Closer Controls:**
 Closer controls are accessible through mounting plate for closer adjustment. Use 1/8" (3mm.) hex-key for valve adjustments. Use a standard screwdriver for power adjustment.
- Power Adjustment:**
 Power Adjustment permits increasing door closing force. Controlled by slotted screw marked "PA."
- Closing Speed:**
 Closing Speed controlled by valves marked "SWEEP" and "LATCH".
ATTENTION: Adjust closing speed time to between 4 to 7 seconds from 90°. Use of the door by people with disabilities, elderly, or small children may require greater closing time.
- Delayed Action:**
 Delayed Action option permits door to creep from fully open to about 70°. Creeping time controlled by valve marked "DELAY".
- Backcheck:**
 Backcheck cushions or slows the opening of a door that is forced to travel faster than conditions require. Backcheck controlled by valves marked "BC POSITION" (open for backcheck start at a greater door opening angle) and "BC" (for adjusting backcheck intensity). **Never close BC valve completely.**
- Optional Enhanced Backcheck:**
 Optional Enhanced Backcheck provides adjustable backcheck intensity beginning at approximately 15° of the door opening cycle. Backcheck positioning valve is omitted when this feature is provided.
- Install Dress Plate:**
 Refer to page 2.

Technical Product Support:
 Monroe, NC 28112 USA
 Phone: 877.974.2255 ext: 2
 Techsupport.NortonRixson@assaabloy.com
 NortonRixson.com

Norton Rixson is a brand associated with ASSA ABLOY Accessories and Door Controls Group, Inc., an ASSA ABLOY Group company.
 Copyright © 2001, 2014, 2024, 2025, ASSA ABLOY Accessories and Door Controls Group, Inc. All rights reserved. Reproduction in whole or in part without the express written permission of ASSA ABLOY Accessories and Door Controls Group, Inc. is prohibited.