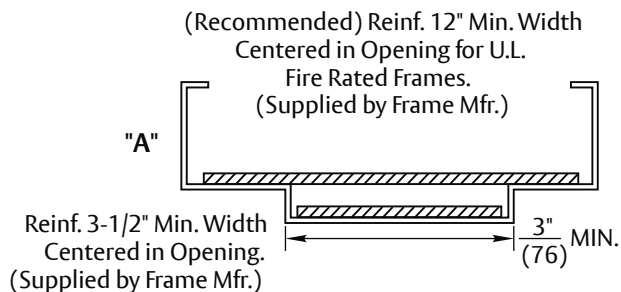
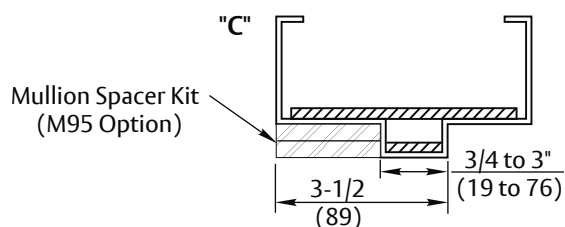
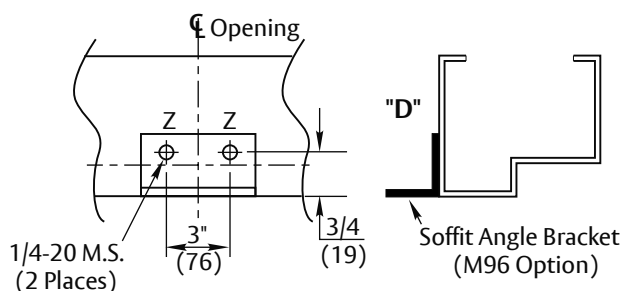


FRAME APPLICATIONS

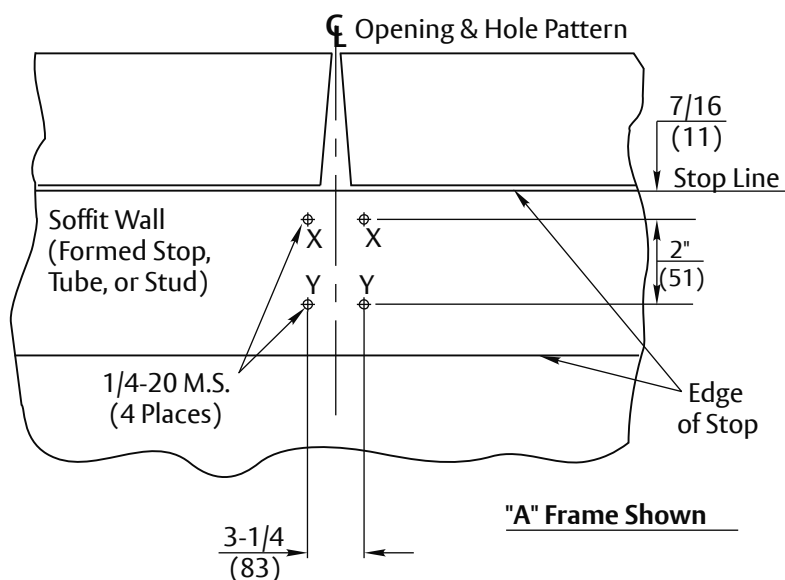
Recommended for double rabbeted frames where stop face is less than 3" (76) wide.



Recommended for header configuration with less than 3" (76) of mounting surface.

**SOFFIT PREP (TOP VIEW)**

—TYPICAL FOR ALL FRAMES—



Application	Holes Required
"A"	X & Y
"C"	X & Y (Note 6)
"D"	X & Z

Notes:

- Do not scale drawing. Dimensions shown in inches(mm).
- Prepare mounting holes when installing the mullion. Use this template for structural frame preparation.
- Metal frames should provide mounts to maintain not less than (3) full screw threads engaged
- Wood frames should provide not less than 5/8 (16) screw engagement to structural beam (construction grade lumber, or better).
- 900(A) Series and 900(B)KM Series mullions are made from 2" x 3" (51 x 76) tubular steel. Locate device from mullion face (strike seat).
- Two flat head 1/4-20 x 1-1/4 machine screws are included with Mullion Spacer Kit (M95 Option) when so ordered.

972(A) & 910(A) Mullions
972(B)KM & 910(B)KM Mullions
Frame Preparation

Corbin
Russwin

ASSA ABLOY

www.corbinrusswin.com

SUPERSEDES T31074

DO NOT SCALE DRAWING

TEMPLATE NUMBER

T31074-1

DATE

11-24