

Locking Pull

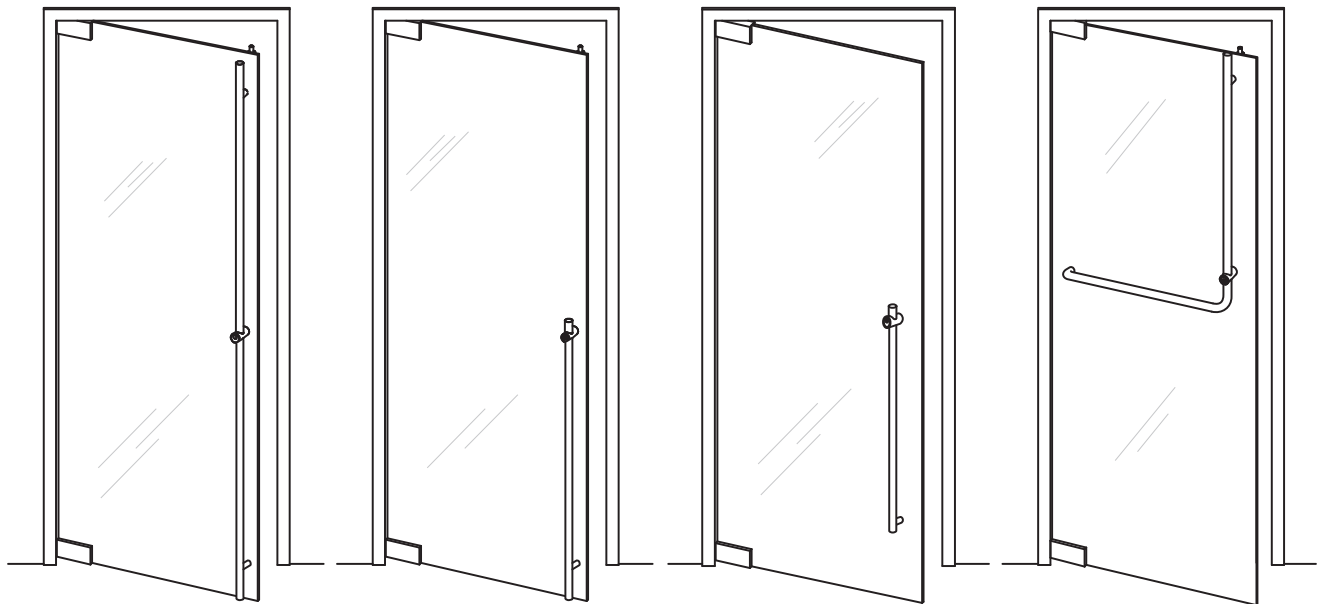
ASSA ABLOY
Opening Solutions

Installation Instructions for Glass, Wood, and Metal Doors

Experience a safer
and more open world

IMPORTANT: PLEASE READ BEFORE INSTALLING THE LOCKING PULL

The following instructions will decrease your chances of experiencing problems during the installation and ensure a smooth, trouble-free operation of the Locking Pull.



Full Height Up,
Down, or Both

Half Height Up
or Down

10" Clearance on
Cylinder Side

*Available in full height or
half height down*

Push/Pull Bar Option

*Push Bars are available half height
and full height, up or down in a
variety of styles.*

Table of Contents

- 1. Introduction 2
 - 1.1 Description 2
 - 1.2 Parts List 2
 - 1.3 Tools and Supplies 2
- 2. Detailed Parts List 3
- 3. Locking Pull Installation Instructions 4
 - 3.1 Unpacking Details 4
 - 3.2 Install the Exterior Pull (Cylinder Side) 5
 - 3.3 Prepare and Install the Interior Pull (Thumbturn Side) 6
- 4. Cleaning and Maintenance 7
 - 4.1 General Maintenance Instructions 7
 - 4.2 Finish Cleaning Instructions 7

1. Introduction

1.1 Description

- The Rockwood Locking Pull Series offers superior functionality, durability, and aesthetics for swinging and sliding doors.
- The Locking Pull System integrates Rockwood’s contemporary Post Mount style door pull with a deadbolt locking system.
- Please read the installation instructions in the manual carefully before installing the Locking Pull.
- If you have questions, please contact us at (800) 458-2424.

1.2 Parts List

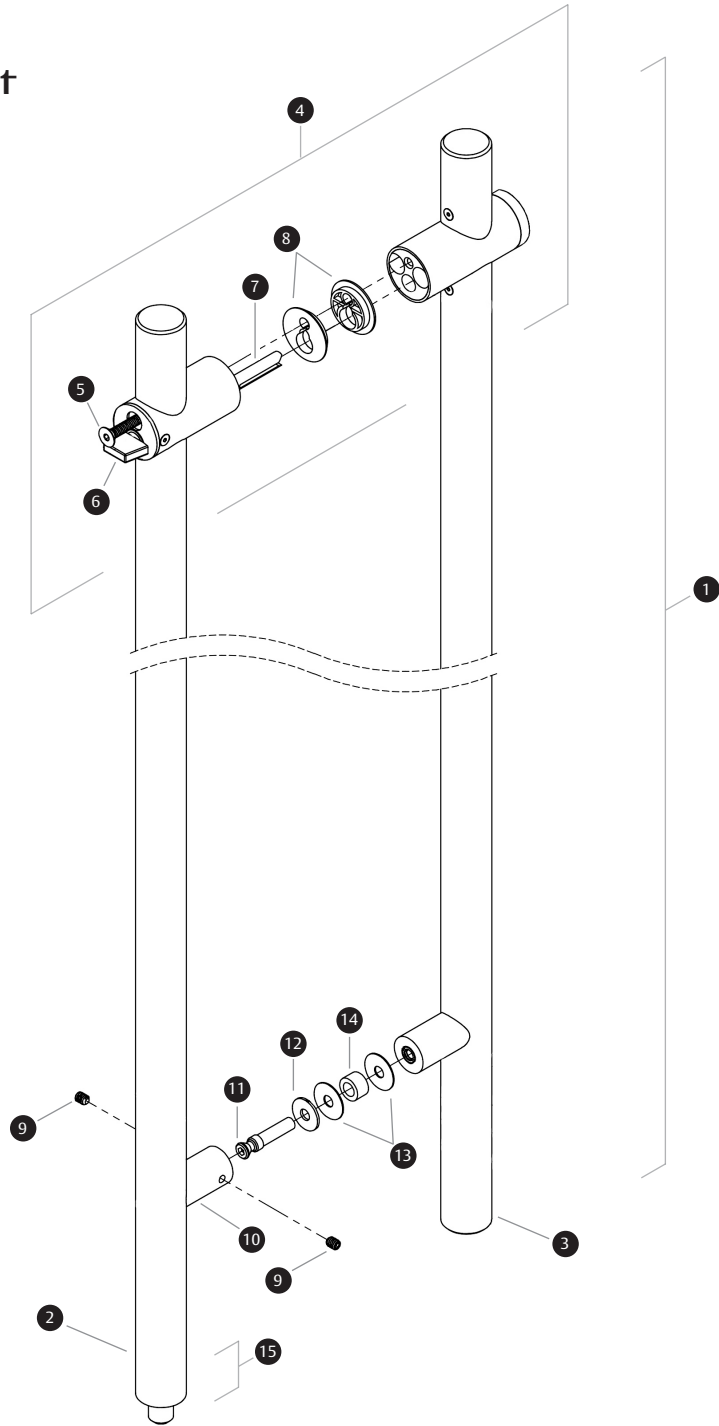
- Please refer to the Detailed Parts List section for a complete list of parts required for installation.

1.3 Tools and Supplies

- The tools and supplies listed below are necessary to complete the installation of the Locking Pull.

Tools Required	Supplies Required
Allen Wrench: 1/8"	Threadlocker
Allen Wrench: 3/16"	
Allen Wrench: 5/32"	
Allen Wrench: 5/64"	

2. Detailed Parts List



Description	Quantity	Description	Quantity
1 Locking Pull Assembly	1	9 Set Screw	2
2 Interior Pull	1	10 Mounting Post	1
3 Exterior Pull	1	11 Conehead Machine Screw	1
4 Lock Cylinder Assembly	1	12 Metal Washer	1
5 Mounting Screw	1	13 Plastic Washer	2
6 Thumbturn	1	14 Door Bushing	1
7 Shaft	1	15 Interior Pull Locking End	1
8 Lock Housing Bushing	2		

ASSA ABLOY
Opening Solutions

Experience a safer
and more open world

3. Locking Pull Installation Instructions

3.1 Unpacking Details

WARNING: Flexing the Lock Pull Assembly ① may cause it to become loose at crucial joints, especially in longer pulls.

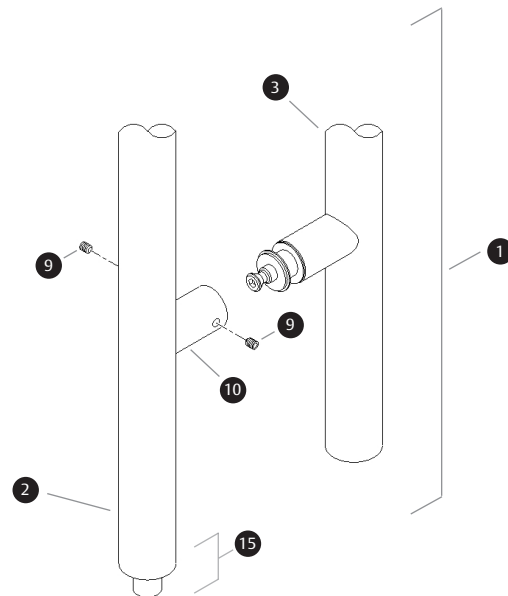
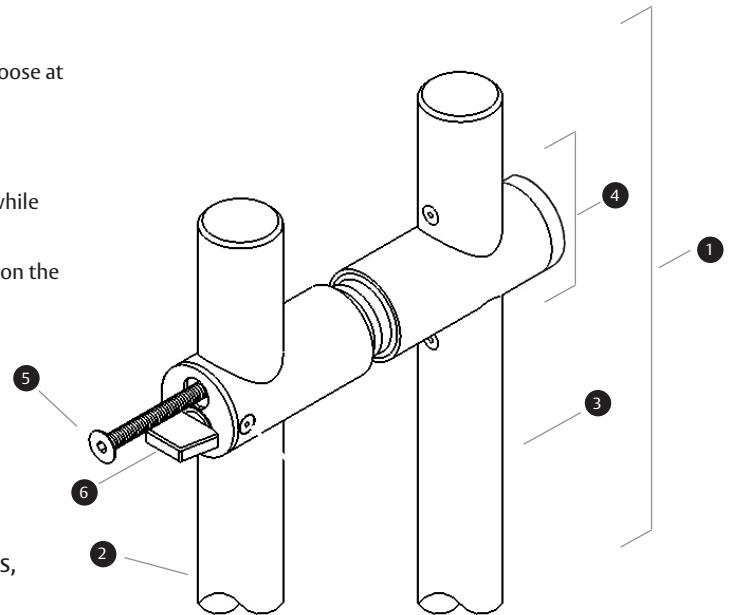
*Save all fasteners as they are needed for installation.

- Carefully remove the Locking Pull Assembly ① from the packaging while supporting it from flexing, and lay it flat on a work surface or floor.
- Use a $\frac{1}{8}$ " Allen wrench to loosen (do not remove) the Set Screws ⑨ on the Mounting Post ⑩ located at the Interior Pull Locking End ⑮.
- At the Lock Cylinder Assembly ④, rotate the Thumbturn ⑥ to allow access to the Mounting Screw ⑤.
- Use a $\frac{5}{32}$ " Allen wrench to remove the Mounting Screw ⑤.
- Separate the Interior Pull ② and the Exterior Pull ③. Be cautious to not lose the door bushings in between the Interior Pull ② and the Exterior Pull ③.

For Full Height Locking Up or Down and Push Bar for LDPs, please note the following steps:

- Carefully remove the additional tubes from the box.
- After pulls are separated, install the additional section of the pull to the other pull with the Lock Cylinder Assembly ④. This connection will occur above or below the Lock Cylinder Assembly ④, depending on the bolt location.
- To install additional section, place it over the aluminum boss that is located next to the Lock Cylinder Assembly ④. Place thread locker on #6-32 x $\frac{1}{4}$ " provided screw. Use the provided, $\frac{5}{64}$ " Allen wrench to tighten section of the pull to the Lock Cylinder Assembly ④.

Note: Full Height Locking Pull Both (Bolts Up and Down) option come fully assembled.



- ① Locking Pull Assembly
- ⑨ Set Screw (x2)
- ⑩ Mounting Post
- ⑮ Interior Pull Locking End
- ④ Lock Cylinder Assembly
- ⑥ Thumbturn
- ⑤ Mounting Screw
- ② Interior Pull
- ③ Exterior Pull

Required Tools:

Allen Wrench: $\frac{1}{8}$ "

Allen Wrench: $\frac{5}{32}$ "

Allen Wrench: $\frac{5}{64}$ "

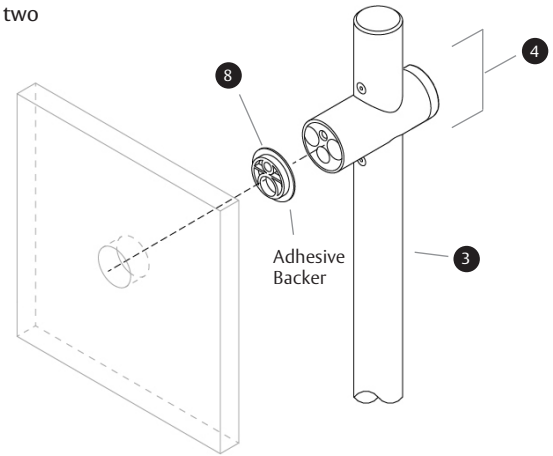
ASSA ABLOY
Opening Solutions

3.2 Install the Exterior Pull (Cylinder Side)

- Remove the Conehead Machine Screw 11, *Metal Washer 12, *Door Bushing 14, and two *Plastic Washers 13 from the Exterior Pull 3.

**For glass doors only.*

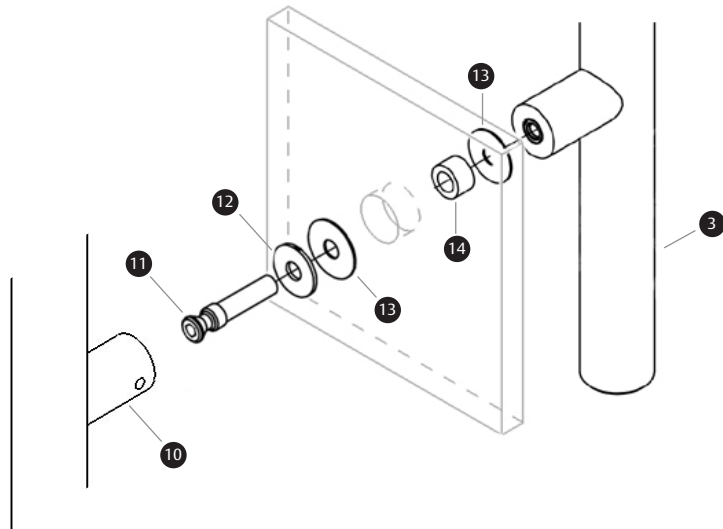
- Insert the Door Bushing 14 into the hole in the door in correlation with the Mounting Post 10 location.
- Slide the Metal Washer 12 over the Conehead Machine Screw 11 on the interior side of the door.
- Slide one Plastic Washer 13 over the Conehead Machine Screw 11 so it sits against the Metal Washer 12 on the interior side of the door.
- From the interior side, insert the Conehead Machine Screw 11 through the Door Bushing 14 in the door.
- Slide the other Plastic Washer 13 over the protruding threads of the Conehead Machine Screw 11 on the exterior side of the door.
- Apply a small drop of threadlocker to the threads of the Conehead Machine Screw 11.
- Holding the pull in place, insert the threaded end of the Conehead Machine Screw 11 into the Exterior Pull 3 and tighten slightly using a $\frac{3}{16}$ " Allen wrench.
- Remove the Adhesive Backer from the Lock Housing Bushing 8. Apply the sticky side of the Lock Housing Bushing 8 to the back side of Lock Cylinder Assembly 4 being sure that the holes are vertical and the large hole is at the bottom. Using a $\frac{3}{16}$ " Allen wrench, securely tighten the Conehead Machine Screw 11 in the Exterior Pull 3.



- 11 Conehead Machine Screw
- 12 Metal Washer
- 14 Door Bushing
- 13 Plastic Washer
- 3 Exterior Pull
- 10 Mounting Post
- 8 Lock Housing Bushing
- 4 Lock Cylinder Assembly

Required Tools:

Allen Wrench: $\frac{3}{16}$ "

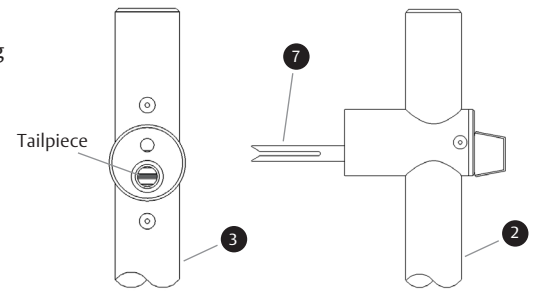


ASSA ABLOY
Opening Solutions

Experience a safer
and more open world

3.3 Prepare and Install the Interior Pull (Thumbturn Side)

- On the Exterior Pull ③, ensure the tailpiece is horizontal.
- On the Interior Pull ②, ensure the split in the Shaft ⑦ is horizontal.
- Position the Interior Pull ② for installation and ensure proper alignment of the Mounting Post ⑩ and the Lock Cylinder Assembly ④.
- Apply a small drop of threadlocker to the threads of the Mounting Screw ⑤.
- Remove the Adhesive Backer from the Lock Housing Bushing ⑧. Apply the sticky side of the Lock Housing Bushing ⑧ to the back side of Lock Cylinder Assembly ④. Slide the Mounting Screw ⑤ through the Interior Pull ② Lock Cylinder Assembly ④ side while sliding the Conehead Mounting Screw ⑪ head into the Mounting Post ⑩ at the end of the pull.
- Use a $\frac{5}{32}$ " Allen wrench to securely tighten the Mounting Screw ⑤ in the Lock Cylinder Assembly ④. Use a $\frac{1}{8}$ " Allen wrench to securely tighten the Set Screws ⑨ on the Mounting Post ⑩.
- Ensure that the Lock Cylinder Assembly ④ and the Mounting Post ⑩ are secured tightly to the door.
- Cycle the thumbturn side and the key side to ensure proper function.

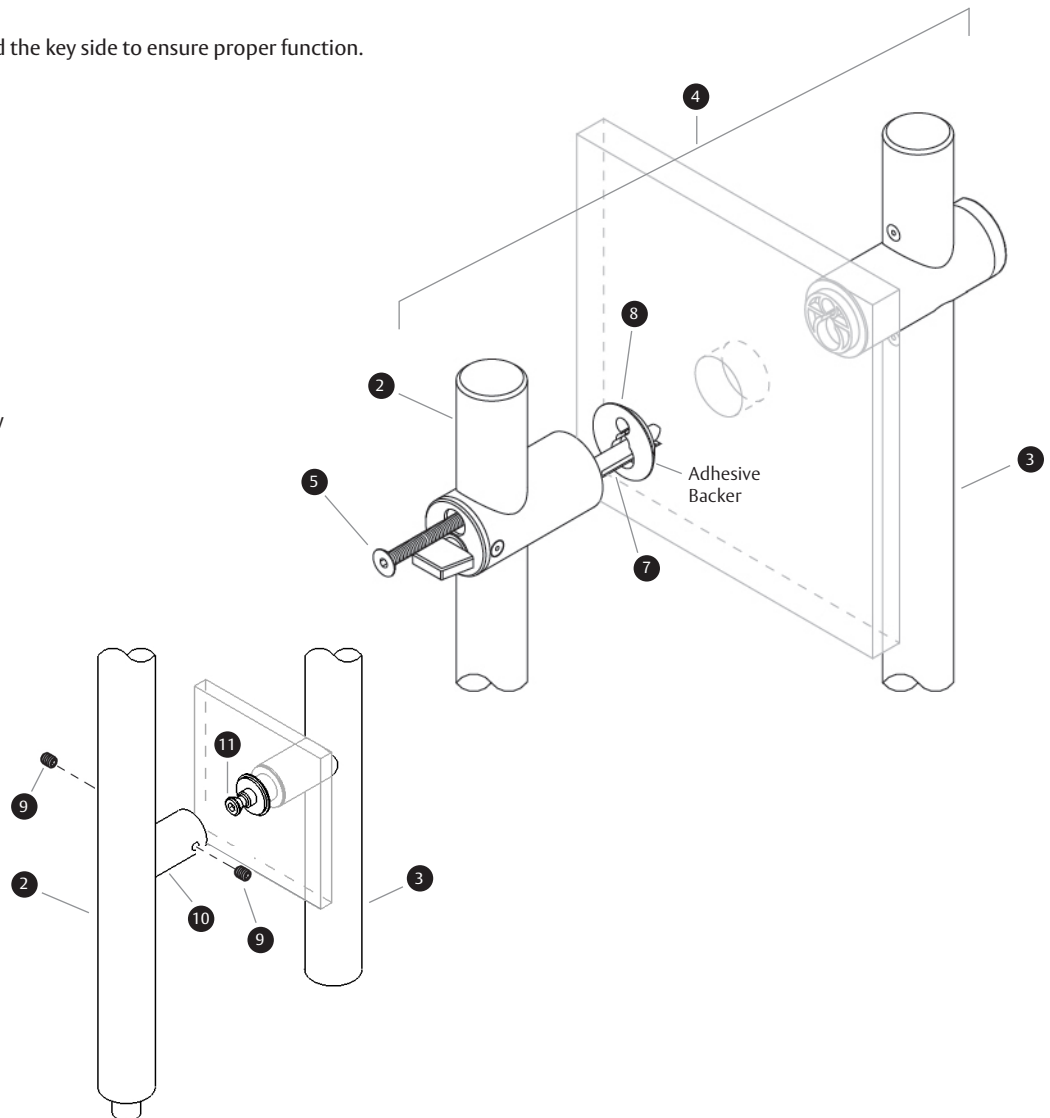


- ③ Exterior Pull
- ② Interior Pull
- ⑦ Shaft
- ⑩ Mounting Post
- ④ Lock Cylinder Assembly
- ⑤ Mounting Screw
- ⑧ Lock Housing Bushing
- ⑪ Conehead Mounting Screw
- ⑨ Set Screw

Required Tools

Allen Wrench: $\frac{1}{8}$ "

Allen Wrench: $\frac{5}{32}$ "



ASSA ABLOY
Opening Solutions

4. Cleaning and Maintenance

4.1 General Maintenance Instructions

- Periodically check the fasteners. The fasteners must not be loose. If the fasteners are loose, reapply threadlocker and tighten as necessary.

4.2 Finish Cleaning Instructions

- CAUTION: Before you clean the entire Locking Door Pull, clean a small test area to make sure that you are satisfied with the results.
- Frequent cleaning extends the life of all finishes.

Finish Code	Finish	Cleaning Instructions
US3	Polished Brass, Clear Coated	Use a soft cloth and mild soap and water. Never use brass polish or an abrasive cleaner unless you intend to remove all clear coat and totally refinish the product.
US4	Satin Brass, Clear Coated	Use a soft cloth and mild soap and water. Never use brass polish or an abrasive cleaner unless you intend to remove all clear coat and totally refinish the product.
US10BL	Satin Oxidized Bronze, Clear Coated	Use a soft cloth and mild soap and water. Never use brass polish or an abrasive cleaner unless you intend to remove all clear coat and totally refinish the product.
US32	Polished Stainless Steel	Use a soft cloth and a good metal cleaner. We recommend Mr. Metal by S.C. Johnson Company.
US32D	Satin Stainless Steel	Use a soft cloth and a good metal cleaner. We recommend Mr. Metal by S.C. Johnson Company.
US32MS	Polished MicroShield Coated	Use a soft cloth and mild soap and water. Never use brass polish or an abrasive cleaner unless you intend to remove all clear coat and totally refinish the product.
US32DMS	Satin MicroShield Coated	Use a soft cloth and mild soap and water. Never use brass polish or an abrasive cleaner unless you intend to remove all clear coat and totally refinish the product.
10BE	Oxidized & Oiled Bronze Powder Coat Equivalent	Use a soft cloth and mild soap and water. Never use brass polish or an abrasive cleaner unless you intend to remove all coating and totally refinish the product.
RPC	Red Powder Coat	Use a soft cloth and mild soap and water. Never use brass polish or an abrasive cleaner unless you intend to remove all coating and totally refinish the product.
WPC	White Powder Coat	Use a soft cloth and mild soap and water. Never use brass polish or an abrasive cleaner unless you intend to remove all coating and totally refinish the product.
BPC	Black Powder Coat	Use a soft cloth and mild soap and water. Never use brass polish or an abrasive cleaner unless you intend to remove all coating and totally refinish the product.
BSP	Black Suede Powder Coat	Use a soft cloth and mild soap and water. Never use brass polish or an abrasive cleaner unless you intend to remove all coating and totally refinish the product.
WSP	White Suede Powder Coat	Use a soft cloth and mild soap and water. Never use brass polish or an abrasive cleaner unless you intend to remove all coating and totally refinish the product.
FBPC	Flat Black Powder Coat	Use a soft cloth and mild soap and water. Never use brass polish or an abrasive cleaner unless you intend to remove all coating and totally refinish the product.
CUSTOM PC	Custom Powder Coat	Use a soft cloth and mild soap and water. Never use brass polish or an abrasive cleaner unless you intend to remove all coating and totally refinish the product.

The ASSA ABLOY Group is the global leader in access solutions. Every day we help people feel safe, secure and experience a more open world.

ASSA ABLOY
Opening Solutions

ASSA ABLOY Opening Solutions
Architectural Accessories Group
Rockwood, PA
P: 800.458.2424 • F: 800.922.9212
www.assaabloydooraccessories.us

Copyright © 2019-2021, ASSA ABLOY Accessories and Door Controls Group, Inc. All rights reserved. Reproduction in whole or in part without the express written permission of ASSA ABLOY Accessories and Door Controls Group, Inc. is prohibited.