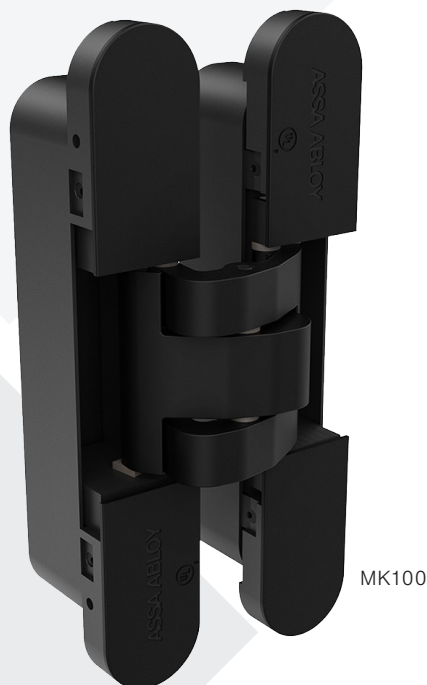


McKinney MK100/MK100ME

Concealed Hinges Series



MK100

SPECIFICATIONS:

MATERIAL: Zinc Alloy

OVERVIEW:

Refined and minimal, the McKinney Concealed Hinges feature 3-Dimension adjustability for easy installation and door alteration. The snap-on covers conceal screws for a clean aesthetic.

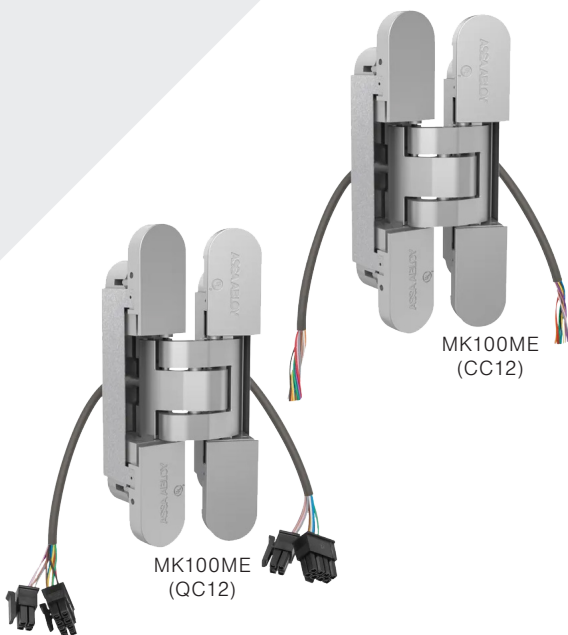
OPTIONS:

- Overall hinge length: 160 mm (6.30")
- Hinge width: 28 mm (1.10")
- Non-handed
- Opening angle: 180 degrees
- 3-Dimensional adjustability:
 - Vertical +/- 2.5 mm
 - Horizontal +/- 2.5 mm
 - Depth +/- 1 mm
- For wood or hollow metal doors with wood or metal frames
- UL Listed for hollow metal, steel covered composite and wood core fire doors rated 20 minutes
- MK100ME available in CC12 or QC12 configurations
- ANSI/BHMA A156.1 Grade 1 (MK100 only)

AVAILABLE FINISHES:

- Satin Chrome (PN# MK67006)
- Matte Black (PN# MK67007)
- Matte White (PN# MK67017)
- Polished Chrome (PN# MK67023)
- Polished Brass (PN# MK67024)
- Polished Copper (PN# MK67025)
- Antique Bronze (PN# MK67026)

Additional finishes on request



MK100ME (CC12)

MK100ME (QC12)

Hinge Capacity - Door thickness minimum: 1 ³/₈"

Number of Hinges	Door Width			
	32"	36"	42"	48"
2	224 lbs	220 lbs	180 lbs	165 lbs
3	253 lbs	246 lbs	202 lbs	185 lbs
4	282 lbs	275 lbs	216 lbs	198 lbs

The ASSA ABLOY Group is the global leader in access solutions. Every day we help people feel safe, secure and experience a more open world.

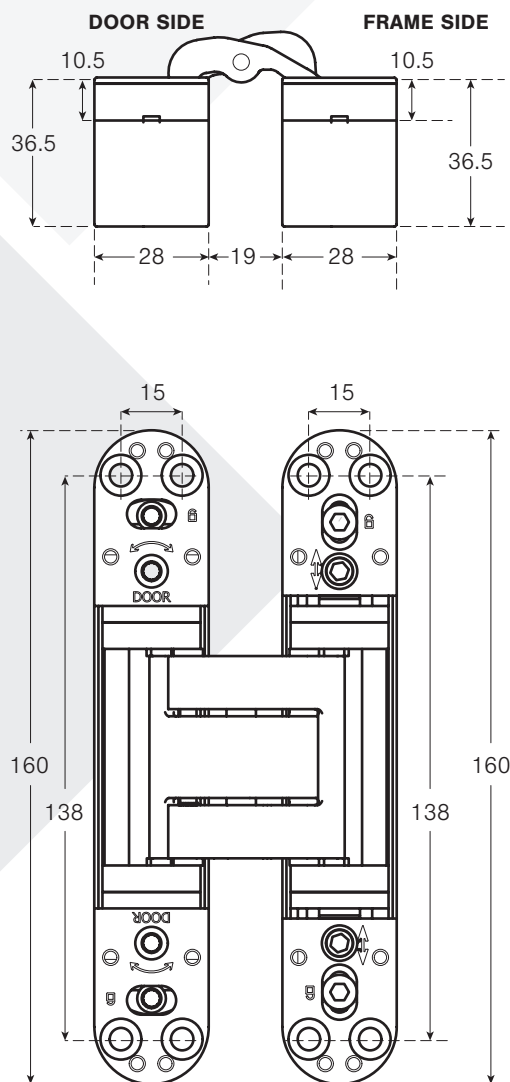
McKinney

ASSA ABLOY

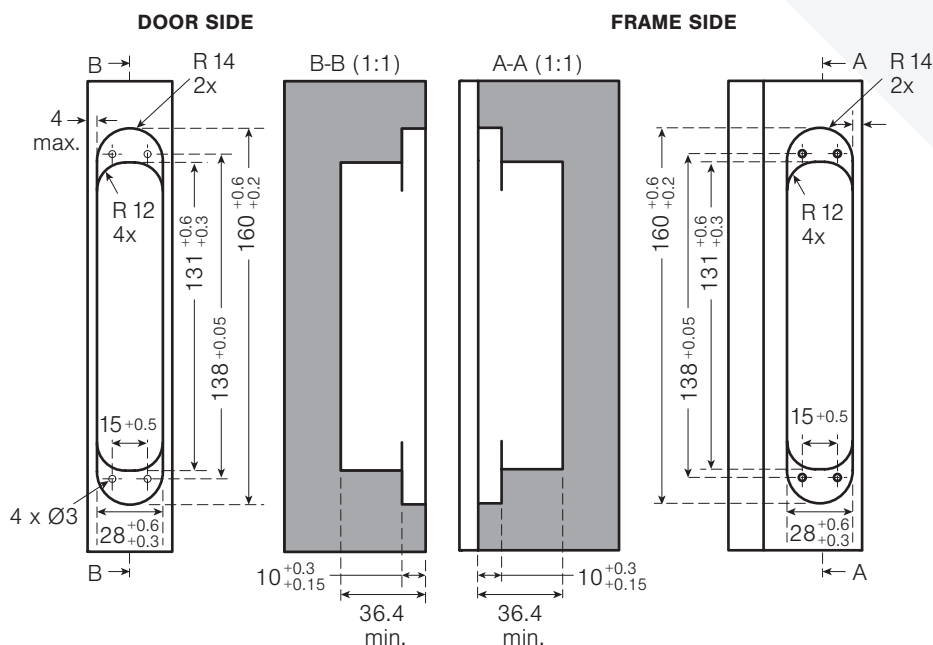
Experience a safer
and more open world

NOT TO SCALE

Hinge Dimensions (millimeters)



Milling Dimensions (millimeters)



Adjustment

