

ACCENTRA

ASSA ABLOY

Experience a safer
and more open world

Classroom Security Solutions

Cylindrical and Mortise Locks



Today, school administrators and facility managers are responsible not only for their students' education, but also with providing a safe and secure learning environment. Unauthorized individuals must be kept out of the building while students and staff can move freely about. While there are many factors that contribute to a safe learning environment, appropriate door hardware is key.

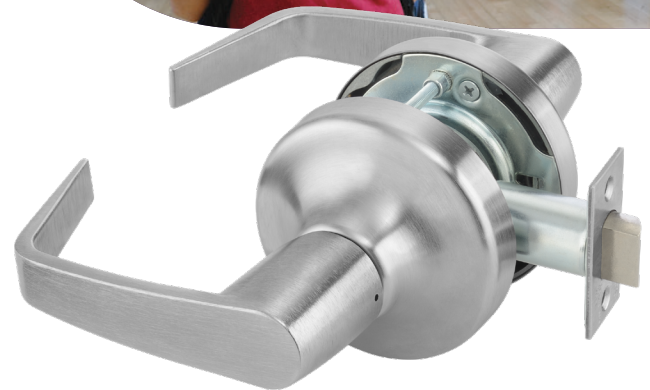
Classroom Security Matters

On top of the responsibility of creating an atmosphere for learning, today's school administrators and facility managers must also provide a safe and secure environment. Keeping unauthorized individuals out while keeping students and staff safe is key.

Selecting the right door hardware begins with an evaluation of each school and each opening. Needs must be weighed against the benefits and challenges of each solution. On top of the safety considerations, life safety codes, fire codes and ADA compliance must also be taken into account.

In the school setting, a few security scenarios are possible:

- Door remains locked throughout the day
- Door remains unlocked **EXCEPT** in an emergency situation
- Door locks are controlled by a central location



ASSA ABLOY ACCENTRA™: Dependability and Safety

As each school makes its determination about what classroom security means, you can rest assured that ACCENTRA™ has at least one solution to get the job done. Many ACCENTRA products were developed specifically for school settings and provide unique functionality to keep students and staff safe and mobile.



Arrows show direction to turn the key on cylindrical locks
(Classroom Security Intruder function)



Red indicator available on mortise locks
(Classroom Security Intruder function)

ACCENTRA mechanical Grade 1 mortise and cylindrical locks offer many functions that lend themselves to securing classrooms. Each affordable option provides its own set of benefits that allow you to customize the security on your doors.

The ASSA ABLOY Group is the global leader in access solutions. Every day, we help billions of people experience a more open world.

ASSA ABLOY Opening Solutions leads the development within door openings and products for access solutions in homes, businesses and institutions. Our offering includes doors, frames, door and window hardware, mechanical and smart locks, access control and service.

ACCENTRA
ASSA ABLOY

All of the functions in the chart below allow FREE egress and the outside (hallway) lever allows access by using a key.

How do you lock the outside (hallway) lever?	ASSA ABLOY ACCENTRA™ Function No. (ANSI Function No.)	Functionality	Grade 1 Cylindrical Lock	Grade 1 Mortise Lock
Lever is always locked	5405LN / 4705LN / 8805 Storeroom or Closet (Cylindrical F86, Mortise F07)	Outside lever is always locked providing security; access to room requires key or someone from inside to open door.	X	X
Pushbutton on inside lever	5422LN / 4722LN Corridor (Cylindrical F90)	Key outside or pushbutton inside locks outside lever; if inside lever rotated, unlocks outside trim.	X	
By key inside only	5417LN / 8817-2 Apartment, Exit or Public Toilet (Cylindrical F88, Mortise F09)	Outside lever can be locked by key from inside. If locked by key on inside, key in outside lever retracts latch but does not unlock.	X	X
By key, inside or outside	5408LN / 4708LN / 8808 Classroom (Cylindrical F84, Mortise F05)	Outside lever can be locked or unlocked by key; cannot lock outside lever from inside.	X	X
	5418LN / 4718LN Intruder Classroom (Cylindrical F110)	Key inside or outside locks/unlocks outside trim. Rotating inside lever retracts latch but outside lever remains locked. Standard with locking direction engraved on inside rose.	X	
	8808-2 Intruder Latchbolt (Mortise F32)	Key inside or outside locks/unlocks outside trim. If locked by inside lever, key in outside retracts latch but does not unlock outside trim.		X
	8811-2 Intruder Deadbolt (Mortise F33)	Latch and deadbolt work in concert; key locks and unlocks latch and deadbolt from either side. When rotated, inside lever unlocks outside lever and retracts deadbolt. Available with optional visual indicator confirming whether the door is secure or not (IND). After exiting, you must relock by key to prevent entry into the room.		X
	8812-2 Intruder Deadbolt (Mortise F34)	Same as 8811-2 but with a deadlatch. Available with optional visual indicator confirming whether the door is secure or not (IND). After exiting, you must relock by key to prevent entry into the room.		X
	8818-2 Classroom Security Intruder	Key on either side locks and unlocks latch and deadbolt. Rotating inside lever retracts both latch and deadbolt but outside lever remains locked. Available with optional visual indicator confirming whether the door is secure or not (IND).		X

ASSA ABLOY ACCENTRA™ • 225 Episcopal Road, Berlin, CT 06037-4004 • Tel: 1-800-438-1951 • Fax: 1-800-338-0965 • www.accentra-assaabloy.com

Copyright © 2016-2024, ASSA ABLOY Access and Egress Hardware Group, Inc. All rights reserved. Reproduction in whole or in part without the express written permission of ASSA ABLOY Access and EgressHardware Group, Inc. is prohibited. Patent pending and/or patent www.assaabloydss.com/patents.