

# Door and Frame Security Solutions for K-12 Schools





Building an ideal learning environment requires a careful balance of security and safety. Ceco Door offers door and frame solutions that address both the code requirements and student needs that drive facility design. The design of a doorway must address challenges such as classroom safety, fire control, tornado and hurricane protection, ADA compliance and facility hygiene. Ceco experts are ready to help school districts and educational organizations determine the best solution to meet all these needs.

Acoustical.....	1
Attack Resistant.....	2-3
Bullet Resistant .....	4
Security SideLite .....	5
Energy Efficient and Sustainable .....	6
Wood Grain Steel .....	7
Tornado Resistant.....	8
Hurricane and Tornado Resistant .....	9
Hurricane Resistant .....	10
Factory Finish .....	11
Rite Door .....	12
Standard Doors and Frames .....	13





# Acoustical Openings (STC)

Using the latest revolutionary technology, patented designs, and utilizing lightweight sound absorbing techniques, Ceco Door has developed acoustical assemblies that solve noise problems for any facility.

Ceco Door offers a range of acoustical products that suit the needs of each particular room or area. Low to mid level STC rated assemblies will help to keep students focused in classrooms, while high STC rated assemblies are ideal for band rooms or auditoriums.

## Technical Options

### Doors

- Up to 4'0" x 8'0" singles and 8'0" x 8'0" pairs
- 3-hour fire rating by Underwriters Laboratories (UL) and ITS (fire ratings vary with STC rating)
- Wood doors available in various species, stains and finishes
- Seals, thresholds, and door bottoms (when required) are shipped with the doors along with the attached STC rating label

Acoustical Door Assemblies			
	HM	Wood	Laminate
Single – Flush	Up to 66	Up to 53	Up to 66
Single – Glazed	Up to 52	Up to 51	Up to 52
Borrowed Lite – Glazed	Up to 57		
Sliders – Flush	Up to 54		
Single – Decorative*	Up to 48		
Pairs – Flush	Up to 49		
Pairs – Glazed	Up to 47		

\*Embossed Panel (s)

### Frames

Some acoustical assemblies can be used with a standard single or double rabbet frame with welded corners. Higher acoustical rated assemblies require a custom acoustical frame. Frames need to be backfilled with appropriate sound deadening material.

### Hardware

- Locks: Cylindrical, mortise, mortise deadlocks, military
- Hinges: Standard weight 4-1/2", 5", continuous, and cam lift - specific hinges may be required depending on the STC rating
- Exit Devices: Surface vertical exit devices
- ElectroLynx™ option available for electrified hardware

## Advantages

- Enhances learning in classrooms
- Promotes healing in healthcare environments
- Provides security and privacy
- All STC values are operable assemblies
- Assemblies have been third-party tested



## Applications

- Band rooms
- Classrooms
- Auditoriums
- Theaters
- Libraries

## Testing

Acoustical assemblies are third-party, independently tested under the ASTM E90, ASTM E1332, ASTM E2235, ASTM E413, SDI 128, and HMMA 865 criteria.

# Attack Resistant Solutions

Attack Resistant Solutions provided by Ceco Door are offered as either a complete opening or retrofit solution. The intent is to delay access to an attacker and suppress unauthorized entry until first responders are able to arrive.

These products have been tested according to the 5-aa10 test standards based on the FBI's Active Shooter Report to set standards for forced entry for new construction, specifically hollow metal doors, frames, hardware, structures and systems.

Although the opening is not intended to be bullet resistant, the entire assembly will remain intact and not weaken if shot and physically attacked for a minimum of 4 minutes.



## Testing

5-aa10 test standard sets requirements and testing methods to certify forced entry and ballistic systems. This standard is intended for use by schools and other public or private facilities that use commercial grade wood and hollow metal entrance doors, framing, hardware, structures and systems as well as glass, fixed sidelight, and borrowed light framing system.

30 shots (7.62 mm / .308 caliber) fired at door glass, 30 shots (7.62 mm / .308 caliber) fired at door hardware in a 6"x 6" area and 30 shots (7.62 mm / .308 caliber) fired at door sidelight in a 6"x 6" area\*. Door then remained closed and sidelights prevented assailant entry after 4 minutes of attack by single assailant using hand tools of various types as allowed in test ASTM C1036 - Standard Specification-Flat Glass, ASTM C1172 - Standard Specification for Laminated Architectural Flat Glass, ANSI Z97.1 Safety Materials Used in Buildings, UL 972 Standard for Burglar Resistant Glazing Material.

## Advantages

- Optional 20, 45, 60 and 90 minute WH fire ratings with fire rated School Guard Glass™ SG5™
- Attack Resistant Solutions provide at least 4 minutes of resistance to physical attack
- Meets test standards for forced entry and ballistic resistant levels of protection for various threats set forth based on the FBI's Active Shooter Report
- Cost effective alternative to bullet resistant doors and windows

## Applications

- Classrooms
- School offices
- Reception/Security Vestibule
- Entrances







## Complete Attack Resistant Opening

### Doors

- Ceco Legion door with 16 ga. face sheets (14 ga. optional)
- In-swing and out-swing available

### Frames

- 16 gauge frames (14 optional)
- Knock down or welded
- Welded sidelights and borrowed lights available

### Glass and Glazing

- Optional 20, 45, 60, and 90 minute WH fire rating with fire rated School Guard Glass™ SG5™
- Narrow light and half glass sizes
- Door glass is factory installed
- Sidelight and borrowed light glass is provided to be field installed by others

### Assembly Hardware

#### Lock Options

- SARGENT 8200 Series mortise lock with latchbolt, deadbolt, LS (Security) escutcheon and lever trim
- Corbin Russwin ML2000 Series mortise lock with latchbolt, deadbolt, VR (Vandal Resistant) escutcheon and lever trim
- ASSA ABLOY ACCENTRA SL8800 Series mortise lock with latchbolt, deadbolt, SL (Security) escutcheon and lever trim

#### Hinge Options

- 3 or 4 each 4-1/2" x 4-1/2" standard weight McKinney hinges
- Pemko steel continuous hinges

\* Glass and door assembly does not stop bullets from penetrating the opening, but will stay intact and locked throughout the physical attack.

## Attack Resistant Retrofit Options

### Light Kit and Glass Sizes:

- Type 2 light kit for existing hollow metal doors
- Type 10 light kit for existing wood doors
- Several standard sizes in vision, narrow light and half glass configurations

Vision	Narrow Light		Half Glass
10x10	3x33	6x16	23-13/16x28 (3068)*
12x12	4x24	6x24	23-13/16x32 (3070)*
	4x25	6x30	23-13/16x34 (3072)*
	5x20	6x36	*Type 2 kit sizes shown

Custom sizes available (min of 3 sq. ft.)

#### Glass and Glazing

- School Guard Glass SG5 attack resistant glass
- Dow 995 silicone glazing compound (10.3 oz tube)
- Tremco 440 butyl tape to be applied to the glass kit interior and exterior sides

### Glass and Glazing for Existing Sidelights and Borrowed Lights

#### Sidelights

- 6" x 10" – 47" x 92-3/4"

#### Borrowed Lights

- 3" x 10" – 95" x 47" glass horizontal oriented
- 3" x 10" – 47" x 95" glass vertical oriented (custom sizes available - 3 sq ft min)



ASSA ABLOY and School Guard Glass  
partnering to increase security options.

# Bullet Resistant Solution

Bullet resistant door and frame assemblies, supplied with the appropriate listed hardware, will meet most job requirements for security and protection. The bullet resistant assemblies offer eight levels of bullet resistant protection.



## Technical Options

- Made with a proprietary ballistic core
- Certified and third-party tested in accordance with UL752 and NIJ standards
- Bullet protection ratings for UL752 levels 1-8 (levels 1-3 handguns, levels 4-8 rifles)
- Available with welded seamless door edge
- Level 1-8 bullet resistant glazing available in multiple sizes including full glass
- Fire rated assemblies tested to UL 10C are available
- Bullet resistant door louvers available



## Bullet Resistant Speaker Port and Deal Tray

- Level 3 bullet resistant stainless steel speaker port.
- Glass is factory prepped to receive the speaker port
- Speaker port is installed flush with the glass surface
- Stainless steel deal tray is bullet resistant up to level 8

## Testing

Bullet resistant doors and frames are fabricated with the finest UL listed armor panels that meet or exceed UL 752 and NIJ standards.

All doors and frames are designed to provide the best practical protection for threat levels 1 through 8.

UL 752 Bullet Protection Ratings	
Level 1	9 mm (3 shots)
Level 2	.357 Magnum (3 shots)
Level 3	.44 Magnum (3 shots)
Level 4	.30 Caliber Rifle (1 Shot)
Level 5	7.62 mm Rifle (1 shot)
Level 6	9 mm (5 shots)
Level 7	5.56 mm Rifle (5 shots)
Level 8	7.62 mm Rifle (5 shots)

## Advantages

- Hollow metal, and PLAM veneered hollow metal, available to match any design
- Bullet resistant glazing available

## Applications

- Public utility field buildings
- Classrooms
- School offices
- Reception/security vestibule
- Sensitive material storage rooms
- Safe rooms





# Security SideLite Frame

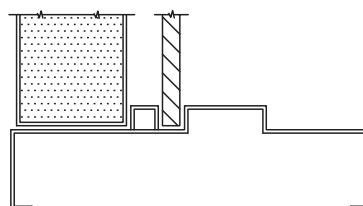
Security SideLite frame is another security solution available for K-12 applications. By having an operable hollow metal panel that closes over the glass portion of the unit, a strong barrier is created for use in the event of an emergency. Additionally, it serves as a visual cue that the area has extra protection. The versatility of this unique opening provides the security and life-safety protections schools require, while also providing daylighting in day to day use to promote a healthy learning environment.

A bullet resistant panel can be installed into an existing sidelight frame for an easy security upgrade.



The Security SideLite is a workable solution that has aesthetic flexibility and meets required industry codes.

- Provides a visual barrier when required
- Retrofit bullet resistant panel installs into an existing sidelite frame for an easy security upgrade
- WH fire rated for 45 minutes, 90 minute rating available with approved fire glass
- Jamb depths available 6-3/4" or larger
- Cold rolled or galvanized material, 16 or 14 gauge



Cross section of the Security SideLite panel

# Energy Efficient and Sustainable

Designing and constructing today's sustainable buildings means taking into account their overall impact on human health and the environment. Third-party certification standards have increased the awareness around the impact of the built environment, resulting in a need for rethought, modern solutions.

Ceco Door's commitment to sustainability is unmatched in the door and hardware industry. Our consultative experts can help you navigate the complexities of today's requirements to reach your sustainability goals, including material ingredient reporting, improving energy efficiency and manufacturing process transparency.



## Energy Efficient Insulated Doors

- Trio-E doors filled with highly insulated polyurethane foam to maximize energy efficiency
- QMAX thermally enhanced cores are intended for applications where polyisocyanurate and polyurethane cores are normally specified
- Improves the building envelope thermal performance and lowers the U-factor designation



## Thermal Break Frames

- Mercury 3 thermal break frames integrated weather-stripping material prevents heat and cold transfer
- Prevents condensation or frost from forming on the interior portion of the frame
- Mercury 3 thermally broken frames tested with Trio-E doors provide the highest performing energy efficient door openings available on the market



Look for the Environmental Product Declaration (EPD), Health Product Declaration (HPD), Declare, and GreenCircle icon for products with exemplary attributes in these categories

## Kerf Frames

- Provides draft control at the frame
- Includes weather-stripping in groove, or kerf, along the frame
- No additional fasteners needed
- Fire rated



## Door and Frame Openings Can Contribute to the Following Categories in LEED

- Energy and Atmosphere (EA)
  - Energy Performance and Optimization (BD+C, ID+C, O+M)
  - Minimum Energy Performance (BD+C ID+C O+M)
- Materials and Resources (MR)
  - Building Product Disclosure and Optimization (BD+C, ID+C)
  - Construction Waste Management (BD+C, ID+C)
  - Purchasing – Facility Maintenance and Renovation (O+M)
  - Solid Waste Management – Facility Maintenance and Renovation (O+M)
- Indoor Environmental Quality (EQ)
  - Indoor Air Quality Strategies (BD+C, ID+C)
  - Low-Emitting Materials (BD+C, ID+C)
  - Acoustic Performance (BD+C, ID+C)
  - Daylight and Quality Views (BD+C, ID+C, O+M)





# Wood Grain Openings

Steel doors are embossed with a plain sliced oak pattern or stained with a smooth tight straight grain design which is similar to maple, cherry, or birch wood. They are then factory finished with one of six standard colors or can be custom color matched which produces the look of real wood. A clear UV resistant top coat finish provides lasting protection for the stain system. Wood grain astragals and window kits are available to complete the package.

## Six Standard Color Options

Embossed  
Wood Grain

Smooth Grain



*Printed colors are not exact, select final color from physical samples. Contact factory for color samples.*

## Custom Color Matching

In house custom color match process assures consistent color stain matching of virtually any color your project might require. Hundreds of stain formulations are possible using different combinations of stain finishes and base coats.

Mail your physical finish sample for matching to your Ceko Customer Service Professional. You will receive the matched color and an approval form to sign and include with your order.

## 6-Panel Embossed Doors

Paneled doors are embossed with the true grain direction of genuine paneled stile and rail wood doors.

- Fire rating up to three hours under Underwriters Laboratories or Warnock Heresy
- Panel doors are available in a polystyrene core only
- Doors are 1-3/4 inch thick with 18 gauge galvanized steel face sheets wood grain embossed .005 inch deep
- Edges of the door are available with the same standard bevels of a wood door with the precision machining and handing of a steel door
- Maximum door width: 3'0"
- Maximum height: 7'0"
- Window preparations are available
- Hinge preparation may be 4-1/2 inch or 5 inch, handed in either standard weight (.134) or universal 4-1/2 inch hinge preparation
- Lock preparations are limited by the size of the rail only

## Flush Doors

Flush wood doors are available in a polystyrene or temperature rise core construction.

- Available in singles or pairs as a handed door (non-handed design not available)
- Hinge preparation may be 4-1/2 inch or 5 inch, handed in either standard weight (.134) or universal 4-1/2 inch hinge preparation
- Lock preparations are limited by the size of the rail only
- Doors are 1-3/4 inch thick with 18 or 16 gauge galvanized steel face sheets wood grain embossed .005 inch deep
- Edges of the door are available with the visible seam edge only
- Maximum door width: 4'0"
- Maximum height: 9'0"
- Optional fire rating up to 3 hours available
- Window preparations are available

# Tornado Resistant Solutions

Strong gusts of winds up to 70 miles per hour are not uncommon anywhere in the world, but sustained winds of 130 -250 miles per hour are generally associated with tornados. Damage can be caused by flying debris — often referred to as windborne missiles. If wind speeds are high enough, missiles can impact a building with enough force to penetrate windows, walls, or the roof. An object such as a 2" x 4" wood stud weighing 15 pounds, when carried by a 250-mph wind, can have a horizontal speed of 100 mph and impact with enough force to penetrate most common building materials used today.

StormPro tornado resistant products were developed to resist missile penetration for use in buildings designed as shelters to protect occupants from injury.



## StormPro™ 361

The International Code Council (ICC) 500 standard defines the construction requirements for safe rooms in order to provide inhabitants protection from tornadoes, hurricanes, and straight line winds.

- StormPro 361 assemblies have been successfully tested in accordance with ICC 500, and met all performance criteria as set forth by the standard
- Opening sizes are available from 2'8" x 6'8" to 4'0" x 8'0" singles, 5'4" x 6'8" to 8'0" x 8'0" pairs
- StormPro frames are available 14-gauge or 12 gauge A60 galvalume steel, unequal rabbet and 2" or 4" face heads
- Field replaceable 4"x25" narrow light or 10"x10" 90 min fire rated factory installed glass
- Preparation for approved multi-point locks and exit devices by SARGENT or Corbin Russwin for StormPro 361 products are included as specified

## StormPro™ 320

- StormPro 320 assemblies have been successfully tested in accordance with ICC500, and have met performance criteria as set forth by the standard
- Doors are available with flush face or 10" x 10" glazed window from 2'8" x 6'8" to 3'0" x 7'0" with 14-gauge steel
- The assembly requires 1-1/2 pair of 4-1/2 x 4-1/2 heavy weight stainless steel McKinney hinges, one SARGENT 10 line lock with 808 stainless strike, and three Medeco Maxum deadbolts



## StormPro™ Tornado Shutter

- The StormPro Shutter is designed for safe rooms that require natural lighting from windows during normal, non-threatening conditions
- StormPro Window Shutter Systems include a three or four sided StormPro frame unit with StormPro door and hardware
- The units are installed inside the room in front of conventional exterior windows. When a severe weather threat occurs, the StormPro Window Shutter is closed creating a safe shelter environment
- Opening sizes range from 2'6" x 3'0" to 4'0" x 6'8" singles, 5'0" x 4'0" to 8'0" x 6'8" pairs



## Testing

- StormPro Assemblies Meet UL Certification for Fire, ICC 500 and FEMA Guidelines
- StormPro assemblies may be fire rated for 3 hours and are certified to ICC 500





# Hurricane and Tornado Resistant Solutions

StormPro Hurricane and Tornado resistant assemblies are a combination of hurricane and tornado shelter impact protective systems that are Underwriters Laboratories (UL) listed to ICC-500 and approved by the Florida Building Commission (FBC). Building owners in hurricane and tornado-prone areas must take proper precautions to protect occupants. Damage can be caused by flying debris (referred to as wind borne missiles). If wind speeds are high enough, missiles can be propelled at a building with enough force to penetrate windows, walls or the roof. An object such as a 2" x 4" wood stud weighing 15 pounds, when carried by a 250-mph wind, can have a horizontal speed of 100-mph. The resulting impact force will penetrate the most commonly used building materials.

## Technical Options

### Doors

- Flush only, StormPro 14 gauge A60 or CRS face sheets (12 ga. optional) with steel stiffened core

### Frames

- StormPro 14 gauge A60 or CRS (12 ga. optional) 4" to 14" depth, KD or welded, 4" face head option, Masonry or EO anchors

### Locking Hardware

- Corbin Russwin FE6600 Series and SARGENT FM7300 Series multi-point locks
  - Singles 2'8" x 6'8" to 4'0" x 8'0" and pairs 5'4" to 6'8" to 8'0" x 8'0" sizes
  - SARGENT 988 Series or Corbin Russwin 988CR series surface bolts
- Corbin Russwin FE5400 Series multi-point exit device (Outswing only)
  - Singles 3'0" x 6'8" to 4'0" x 8'0" and Pairs 6'0" x 6'8" to 8'0" x 8'0" sizes
  - Corbin Russwin FE707A or FE708A Series hardware mullion
- SARGENT FM8700 Series exit device with 655 or 653 strike (Outswing only)
  - Singles 3'0" x 6'8" to 4'0" x 8'0" and pairs 6'0" x 6'8" to 8'0" x 8'0" sizes

### Hinges

- McKINNEY SP butt hinges
- Markar HG305, HG305WT10, FM300, FM300WT and other StormPro approved continuous hinges

### Accessories:

- StormPro approved door closers, perimeter seals electronic power transfer, door position switches, holders/stops, viewers, rod guards and kick plates



## Testing

- ICC 500, Standard for the Design, Construction and Performance of Storm Shelters
- Florida Building Code (FBC) under FL# 40296
- 15 Lb. Lumber 2 x 4 Missile Impact at 100 mph
- Design pressure +/- 227 psf

## Applications

- Enhanced Hurricane Protection Areas
- Community Shelters
- Corporate Campuses
- Schools and Government Facilities
- Safe Rooms

# Hurricane Resistant Solutions

Hurricane resistant products have been tested to the requirements for hurricane-prone and wind-borne debris regions as defined in the International Building Code (IBC) listed by Florida Building Commission, Dade County, and third-party agencies. Assemblies are tested for design pressures, impact resistance, glass and glazing materials, and specific commercial hardware applications. Listed assemblies are available to meet the most stringent design pressure requirements for coastal high rise buildings as well as less severe inland applications. Code officials have standardized this data for construction in regions of the country susceptible to violent wind storms in attempts to safeguard the public health, safety, and general welfare through requirements for buildings and other structures sited in these hurricane-prone areas.



## Technical Options

### Doors

- Design Pressure ranging from +/- 50 psf to +/- 150 psf
- Water infiltration ranging from +/- 50 psf to +/- 60 psf
- Up to 4'0" x 8'0" singles and 8'0" x 8'0" pairs with glazing options
- Texas Department of Insurance (TDI)
- Glazing options available

### Frames

- Single and paired openings
- Sidelite options up to 12'10" x 8'0"
- Transom options up to 6'0" x 10'0"

### Hardware Options

- Multiple hardware configurations including brands, Corbin Russwin, McKinney, RIXSON, SARGENT, ASSA ABLOY ACCENTRA and more

## Testing

Hurricane resistant products have been third-party tested by UL and ITS/WH certified to the following test standards:

- ANSI A250.13
- ASTM E330/E1886/E1996
- TAS 201, TAS 202, TAS 203

## Advantages

- 3rd party certified openings
- UL fire rated
- Multiple hardware applications available
- Glazed openings available

## Applications

High wind load areas including projects with risk of wind-borne debris. Applications include but are not limited to risk category II and III projects, as well as projects within TDI and FBC (including HVHZ).

- Community shelters
- Storm shelters
- Disaster and tornado shelters
- School shelters
- School "safe" rooms





# Factory Finished Solutions

Ceco Door has the capability to deliver both custom and standard commercial grade factory prefinished doors and frames. With a prefinished product, a building's project manager has more flexibility to complete the job correctly and on schedule.

The factory prefinish is extremely durable and is factory applied in a controlled environment to ensure consistent and high quality results. The beauty of the finish cannot be matched by application of coatings at the job-site.

## Superior Coverage and Durability

The coating applied at the factory is controlled and offers uniform coverage resulting in a smoother finish free of impurities.

## Green Solution

Compliance with LEED EQ 4.1 and 4.2 for VOC levels at the job-site. Waste and solvent disposal is controlled at the factory and meet all of the requirements of the EPA.

## Cleaner

Less mess and clean-up at the job-site and can be installed later in the construction process.

## Lower Cost

Factory finishing is more efficient than job-site preparation and painting.

## Faster

Faster project completion as the painting process at the jobsite has been eliminated.

## Better

The factory electrostatic painting process is superior to field sprayed, rolled, or brushed on applications used at the job-site.

## Test Standards

Meets ANSI A250.3 test procedure for acceptance criteria for steel doors and frames factory applied finished coatings. HAP (Hazardous Air Pollutant) free.

The color designers at PPG have selected 25 top color recommendations. CURRIES offers these standard colors to complement the designs used by many architects and end users. Custom color matching also available.

### Recommendations by Vertical Market

Multi-Family  
Restaurants  
Commercial

Retail  
Education  
Healthcare

Government  
Hotel

CYPRESS PPG1006-1 Curries # 9832-14018 Retail, Education					
RADISSON PPG1013-1 Curries # 9832-14028 Hotel	OATMEAL PPG1023-1 Curries # 9832-14038 Restaurant, Multi-Family	MOUNTAIN GRAY PPG1021-1 Curries # 9832-14048 Healthcare, Commercial	WHISKERS PPG1025-3 Curries # 9832-14058 Education	SWIRLING SMOKE PPG1007-2 Curries # 9832-14068 Government	WHIRLWIND PPG1013-3 Curries # 9832-14078 Hotel
HOT STONE PPG1007-4 Curries # 9832-14088 Healthcare	STONEHENGE GREIGE PPG1024-5 Curries # 9832-14098 Retail	PORNY TAIL PPG1086-4 Curries # 9832-14108 Multi-Family	CONFIDENCE PPG1076-5 Curries # 9832-14118 Government	CARAVEL BROWN PPG1079-6 Curries # 9832-14128 Restaurant, Multi-Family	PATCHES PPG1024-6 Curries # 9832-14138 Healthcare
DARK ASH PPG1025-5 Curries # 9832-14148 Restaurant	DOVER GRAY PPG1031-5 Curries # 9832-14158 Commercial	NIGHT RENDEZVOUS PPG1037-5 Curries # 9832-14168 Multi-Family	GLAZED GRANITE PPG1011-6 Curries # 9832-14178 Hotel	MOSTLY METAL PPG1036-7 Curries # 9832-14188 Hotel	NIGHT WATCH PPG1145-7 Curries # 9832-1419C Government
SAILORS COAT PPG1152-7 Curries # 9832-14208 Restaurant, Hotel	MYSTICIOUS PPG1037-6 Curries # 9832-14218 Education	GOOSEBERRY PPG1048-7 Curries # 9832-1422C Retail, Commercial	PHANTOM MIST PPG1002-7 Curries # 9832-14238 Hotel	BLACK FOREST PPG1012-7 Curries # 9832-14248 Restaurant	BLACK MAGIC PPG1145-7 Curries # 9832-14258 Restaurant, Hotel

The colors shown are for graphic representation only. Please contact your CURRIES Sales Representative for actual color options, availability and pricing.

The color designers at PPG have selected 25 top color recommendations that complement the designs used by many architects and end users. Custom color matching also available.

Contact your customer service representative for a color sample brochure.

# RITE Door®

Engineered with proven quality components, RITE Door offers an array of factory installed low profile hardware and door protection options that provides an integrated door system which is low in maintenance and high in durability. These characteristics pair nicely with a sophisticated decorative product that blends design and functionality. Ideal for schools, gymnasiums, libraries, universities, and auditoriums, RITE Door can be easily serviced and adjusted in place to assure long lasting alignment and function.



## A high performance package that's beautiful on the outside, practical on the inside

### The Inside

All designated door hardware is pre-installed at our factory for easier installation, reliable operation and reduced maintenance.

### The Outside

A wide range of colors, finishes and options. RITE Door can be installed to pocket into walls, creating a seamless look in entryways, exits and corridors.

## Versatility and Practicality

- Blends in for clean lines, and makes a design statement
- Comes with designated pre-installed hardware, ready for installation into the frame
- Complies with ADA, Life Safety & Fire Codes
- Meets or exceeds security and positive pressure tests
- Fire ratings up to 3 hours for metal doors
- No maintenance service contract needed

## Meets Codes For

- Clear opening width (ADA)
- Fire labels
- Smoke control
- Temperature rise
- Fire and life safety
- Egress doors
- Door encroachment

## Applications

- Cross corridors
- Stairwells
- Doors with automatic operators
- Auditoriums
- Libraries







# Standard Door and Frame Options

Doors and frames are the backbone of any security solution. Since all of the hardware is mounted on, mortised into or connected to either the door or frame, it is extremely important the proper configuration is determined from the beginning.

In addition to our specialty products Ceco Door offers a wide range of security door and frame options for new or existing schools that keeps the best interest of school-aged children and school staff in mind.

## Composite Doors

Ceco offers a complete line of composite type hollow metal doors in face sheet gauges ranging from 20 to 14. Composite doors include fully bonded polystyrene, energy efficient polyurethane and durable honeycomb cores.

Temperature Rise doors offer the maximum in fire and life safety as they feature either 250°F (121°C) or 450°F (232°C) ratings. Fire ratings are available from 20 minutes through 3 hours.

Composite doors have been tested to out-perform all test criteria available for physical endurance. The combined durability and variety of options available make these doors a popular choice for any application.

## Steel Stiffened

Steel stiffened doors are designed with the combination of perimeter steel channels and core stiffeners to offer the industry's largest selection and most reliable and durable construction. They are used in areas where optimum security and susceptibility to vandalism or break-in are of paramount concern.

## Standard Steel Door Grades and Models

Level		Model	Full Flush or Seamless			Construction
			MSG No.	IP in	SI mm	
1	Standard Duty	1	20	0.032	0.8	Full Flush
		2				Seamless
2	Heavy Duty	1	18	0.042	1	Full Flush
		2				Seamless
3	Extra Heavy Duty	1	16	0.053	1.3	Full Flush
		2				Seamless
		3				*Stile and Rail
4	Maximum Duty	1	14	0.067	1.6	Full Flush
		2				Seamless

\*Stiles and rails are 16 ga, flush panels, when specified, are 18 ga.

## Standard Frames

Design flexibility utilizing frames with made-to-order profiles and dimensions. Within tooling limits, frames can be specified in made-to-order dimensions for depth, throat, face, rabbet, soffit, or backbend to include a caulking groove, shadow box, splayed trim line, splayed top, stepped rabbet and others. 16, 14, and 12 gauge steel cold rolled, A60 or G90 galvanized steel.

## Fire label:

Up to three hours (UL10B and UL10C)

## Sizes Available:

Cased Openings - 3" to 14" depth

Single Rabbet - 16 and 14 gauge, 3" to 14" 12 gage, 3-3/8" to 14"

Double rabbet - 16 and 14 gauge, 4-5/8" to 14"  
12 gauge, 5-1/4" to 14"

The ASSA ABLOY Group is the global leader in access solutions. Every day, we help billions of people experience a more open world.

ASSA ABLOY Opening Solutions leads the development within door openings and products for access solutions in homes, businesses and institutions. Our offering includes doors, frames, door and window hardware, mechanical and smart locks, access control and service.

 **Ceco Door**

**ASSA ABLOY**

9159 Telecom Drive | Milan, TN 38358  
Tel (888) 264-7474 | Fax (866) 465-9975  
[www.cecodoor.com](http://www.cecodoor.com)

Ceco is a brand associated with AADG, Inc., an ASSA ABLOY Group company. Copyright © 2024, AADG, Inc. All rights reserved. Reproduction in whole or in part without the express written permission of AADG, Inc. is prohibited.

CEC-003-0424