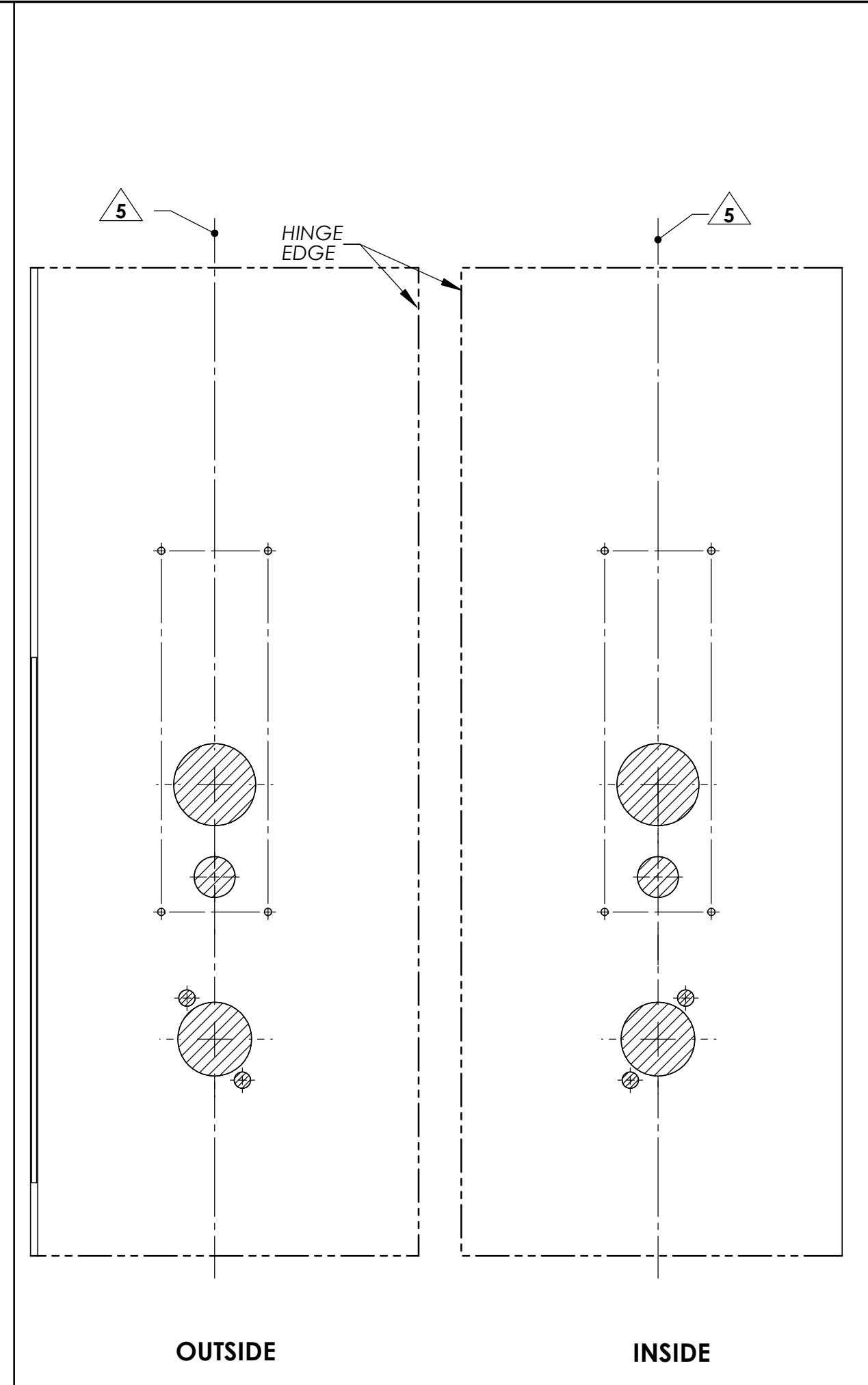
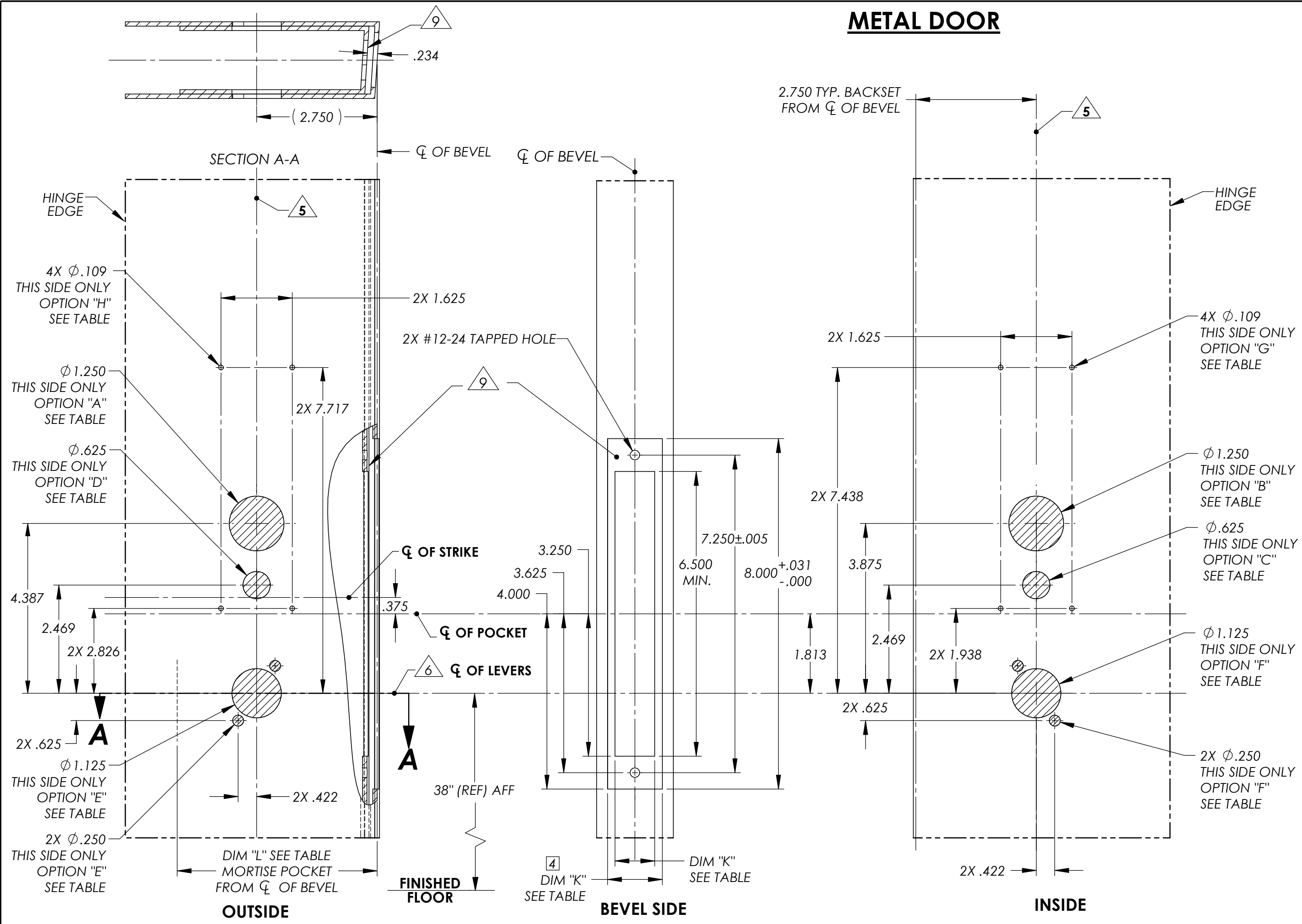


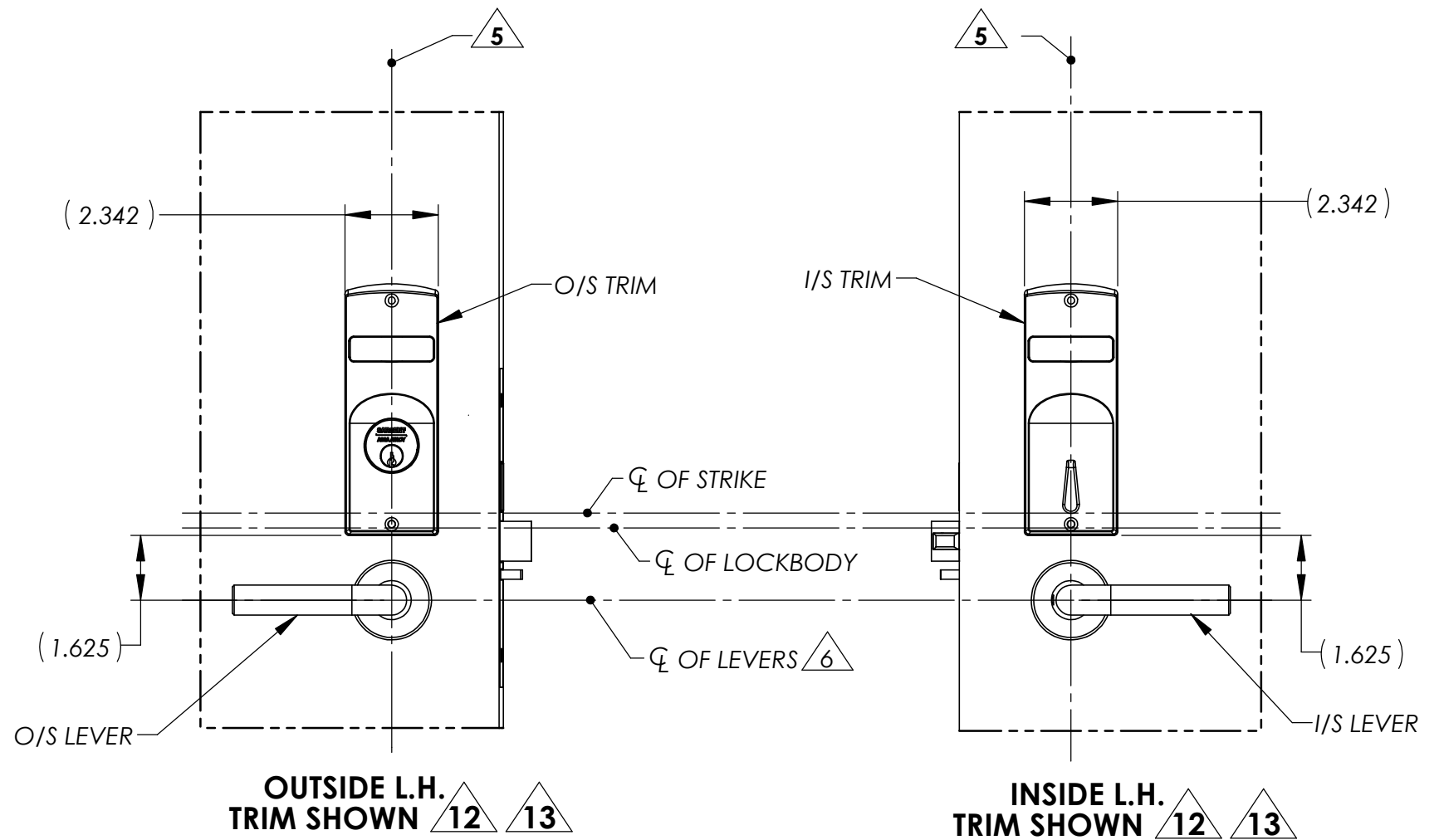
METAL DOOR



L.H. DOOR

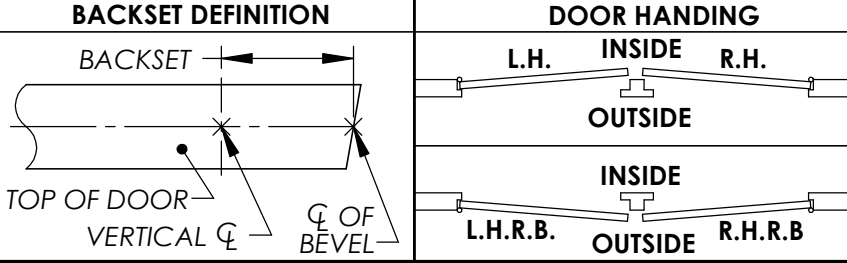
R.H. DOOR

- NOTES:**
- DRAWING IS NOT TO SCALE.
 - PREPARATION DETAILS ARE IN SUPPLEMENT TO ANSI/BHMA A156.115 AND/OR A115W.
 - REFERENCE STRIKE TEMPLATE FOR DETAILS TO PREPARE FRAME.
 - FOR ELECTROLYNX APPLICATIONS, REFER TO MCKINNEY TRANSFER DEVICE CATALOG.
 - VERTICAL CENTERLINE IS REFERENCED FROM THE CENTERLINE OF THE BEVEL. (INDUSTRY STANDARD BEVEL IS 1/8 INCH IN 2 INCHES.)
 - CONSULT THE AUTHORITY HAVING JURISDICTION (AHJ) TO VERIFY THE RECOMMENDED MOUNTING HEIGHT ABOVE THE FINISHED FLOOR (AFF).
 - LIMITATIONS IN THE DOOR CONSTRUCTION PROCESS MAY REQUIRE SOME HOLES TO BE FIELD-LOCATED USING THE PHYSICAL PART AS A TEMPLATE.
 - STANDARD TOLERANCE OF ± .015 APPLIES TO ALL DOOR PREPARATION REQUIREMENTS, UNLESS OTHERWISE SPECIFIED.
 - DOOR REINFORCEMENT IS RECOMMENDED TO IMPROVE (SURFACE MOUNTED) FASTENER HOLDING POWER AND CRUSH RESISTANCE (WHEN THRU-BOLTING IS EMPLOYED). CONSTRUCTION TECHNIQUES SHOULD REFLECT INDUSTRY BEST PRACTICES (I.E. WDMA, SDI) AND AUTHORIZED METHODS WHERE LABEL SERVICE (I.E. UL, W-H) IS IN EFFECT.
 - WIRE RACEWAY AREAS SHOULD BE FREE OF OBSTRUCTIONS & SHARP EDGES TO PROTECT WIRES FROM CUTS & ABRASIONS.
 - CAREFULLY NOTE WHICH FEATURES ARE OPTIONAL, (WHETHER THE FEATURE APPLIES TO BOTH SIDES OF THE DOOR AND/OR IF A DEPTH APPLIES.)
 - MAXIMUM PRODUCT DIMENSIONS ARE SHOWN FOR THE PURPOSE OF VERIFYING FITMENT WITH DOOR FRAME STOPS, DOOR STILE SIZE & LIGHT/LOUVER KITS.
 - IF OPTIONAL LEVERS OR ROSES ARE USED REFERENCE THE RELATED PRODUCT DIMENSIONS TO VERIFY THE FITMENT REQUIREMENTS.



LOCK FUNCTION	TRIM OPTIONS TABLE							
	"A" O/S CYLINDER	"B" I/S CYLINDER	"C" I/S TURN	"D" O/S TURN	"E" O/S LEVER	"F" I/S LEVER	"G" I/S INDICATOR	"H" O/S INDICATOR
05, 24, 25, 28, 43, 45, 47, 50, 51, 56, 57, 58, 67, 281	X		X		X	X		
30, 37					X	X		
26, 29, 38, 39, 40, 41, 46, 52	X	X			X	X		
65, 66, 68			X	X	X	X		
12, 285			X	X	X	X		
21	X		X					
36	X				X			
20	X							
22	X	X						
INDICATOR OPTION (ADD HOLES)								
V* 0 (INDICATOR OUTSIDE)			X	X				X
V0* (INDICATOR INSIDE)			X	X			X	X
V** (INDICATOR BOTH SIDES)	X	X					X	X
INDICATOR WINDOW OPTION CODE								

PREFIXES & FUNCTIONS	LOCK POCKET OPTIONS TABLE		
	DIM "J" LOCK FRONT	DIM "K" POCKET WIDTH	DIM "L" POCKET DEPTH
STANDARD	1.250±.015	1.125	4.563
1- PREFIX	1.062±.015	1.000	4.125
74- PREFIX	1.250±.015	1.125	4.563
RX- PREFIX OR 281/285 FUNCTIONS	1.250±.015	1.250	4.563



SARGENT ASSA ABLOY

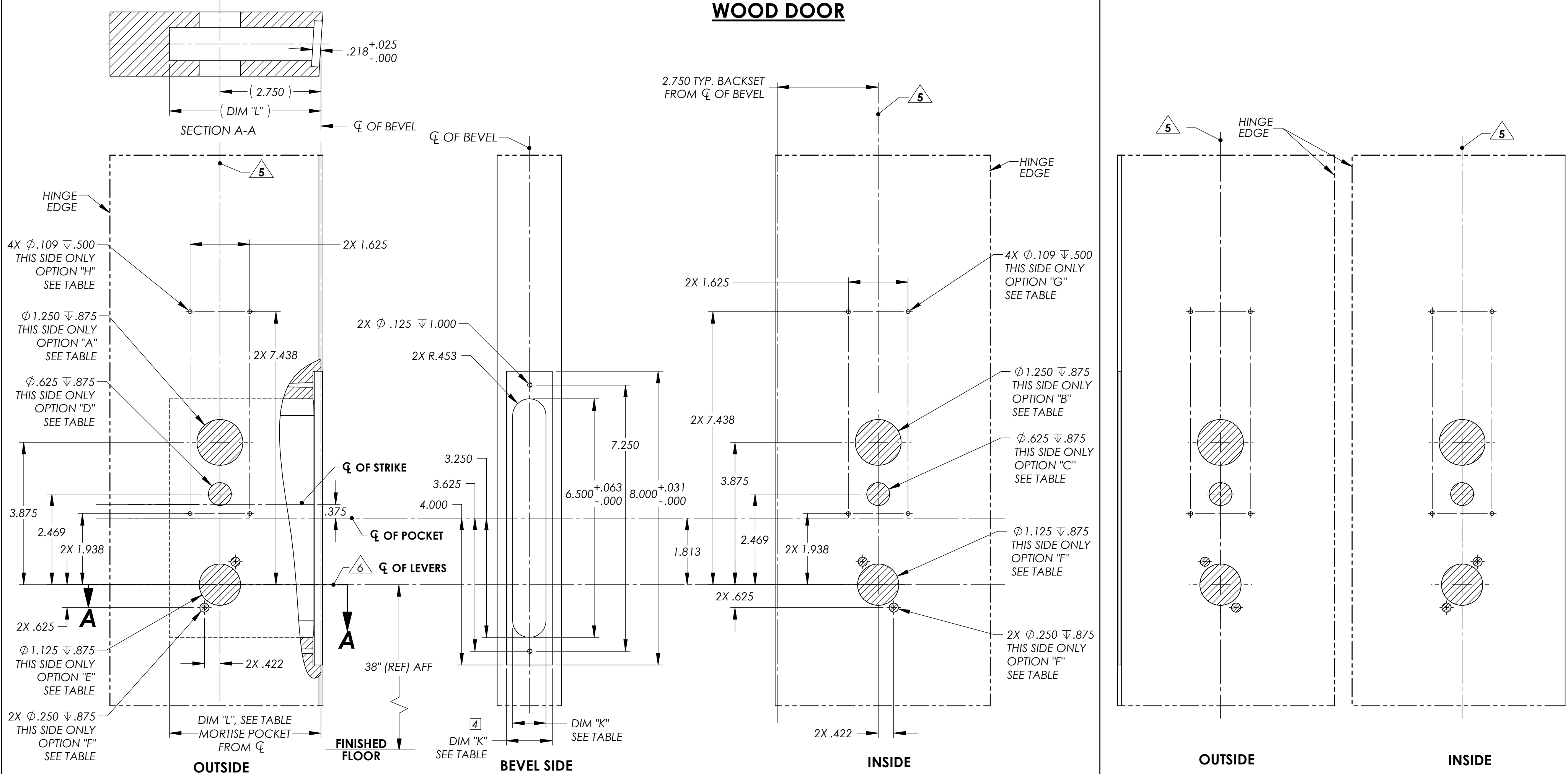
DOOR MANUFACTURERS TEMPLATE:
SECTIONAL INDICATOR TRIM
METAL DOOR
8200 MORTISE LOCK

MAR 2026

SHEET 1 OF 2

4747 6

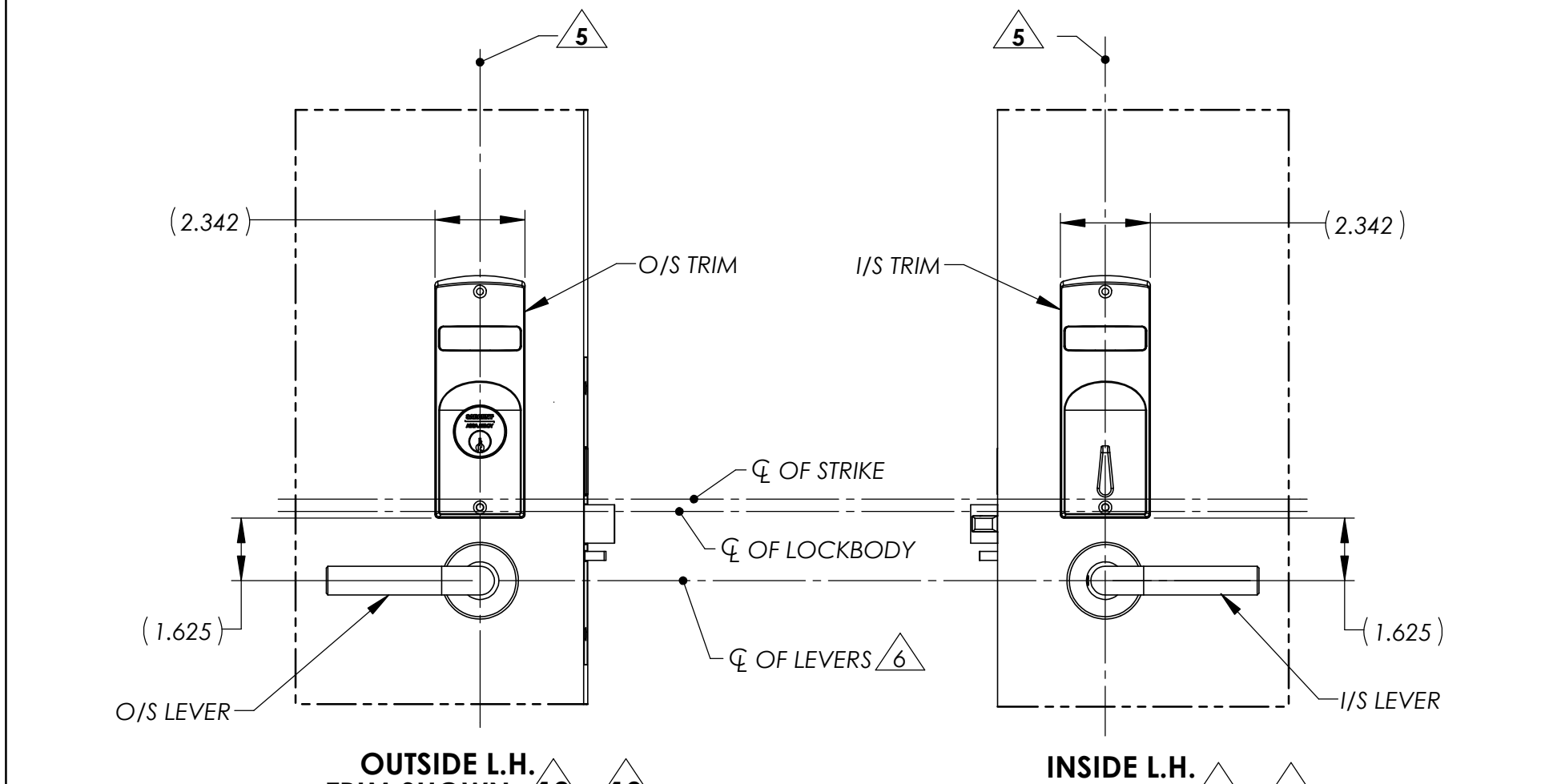
WOOD DOOR



L.H. DOOR

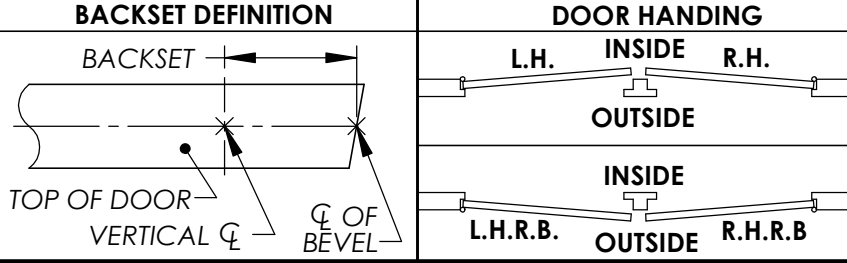
R.H. DOOR

- NOTES:**
- DRAWING IS NOT TO SCALE.
 - PREPARATION DETAILS ARE IN SUPPLEMENT TO ANSI/BHMA A156.115 AND/OR A115W.
 - REFERENCE STRIKE TEMPLATE FOR DETAILS TO PREPARE FRAME.
 - FOR ELECTROLYNX APPLICATIONS, REFER TO MCKINNEY TRANSFER DEVICE CATALOG.
 - VERTICAL CENTERLINE IS REFERENCED FROM THE CENTERLINE OF THE BEVEL. (INDUSTRY STANDARD BEVEL IS 1/8 INCH IN 2 INCHES.)
 - CONSULT THE AUTHORITY HAVING JURISDICTION (AHJ) TO VERIFY THE RECOMMENDED MOUNTING HEIGHT ABOVE THE FINISHED FLOOR (AFF). LIMITATIONS IN THE DOOR CONSTRUCTION PROCESS MAY REQUIRE SOME HOLES TO BE FIELD-LOCATED USING THE PHYSICAL PART AS A TEMPLATE.
 - STANDARD TOLERANCE OF $\pm .015$ APPLIES TO ALL DOOR PREPARATION REQUIREMENTS, UNLESS OTHERWISE SPECIFIED.
 - DOOR REINFORCEMENT IS RECOMMENDED TO IMPROVE (SURFACE MOUNTED) FASTENER HOLDING POWER AND CRUSH RESISTANCE (WHEN THRU-BOLTING IS EMPLOYED). CONSTRUCTION TECHNIQUES SHOULD REFLECT INDUSTRY BEST PRACTICES (I.E. WDMA, SDI) AND AUTHORIZED METHODS WHERE LABEL SERVICE (I.E. UL, W-H) IS IN EFFECT.
 - WIRE RACEWAY AREAS SHOULD BE FREE OF OBSTRUCTIONS & SHARP EDGES TO PROTECT WIRES FROM CUTS & ABRASIONS.
 - CAREFULLY NOTE WHICH FEATURES ARE OPTIONAL, (WHETHER THE FEATURE APPLIES TO BOTH SIDES OF THE DOOR AND/OR IF A DEPTH APPLIES.)
 - MAXIMUM PRODUCT DIMENSIONS ARE SHOWN FOR THE PURPOSE OF VERIFYING FITMENT WITH DOOR FRAME STOPS, DOOR STILE SIZE & LIGHT/LOUVER KITS.
 - IF OPTIONAL LEVERS OR ROSES ARE USED REFERENCE THE RELATED PRODUCT DIMENSIONS TO VERIFY THE FITMENT REQUIREMENTS.



LOCK FUNCTION	TRIM OPTIONS TABLE							
	"A" O/S CYLINDER	"B" I/S CYLINDER	"C" I/S TURN	"D" O/S TURN	"E" O/S LEVER	"F" I/S LEVER	"G" I/S INDICATOR	"H" O/S INDICATOR
05, 24, 25, 28, 43, 45, 47, 50, 51, 56, 57, 58, 67, 281	X		X		X	X		
30, 37						X	X	
26, 29, 38, 39, 40, 41, 46, 52	X	X			X	X		
63, 66, 68			X	X	X	X		
12, 285			X		X	X		
21	X		X					
36	X				X			
20	X							
22	X	X						
V* 0 (INDICATOR OUTSIDE)			X	X				X
V0 (INDICATOR INSIDE)			X	X			X	X
V** (INDICATOR BOTH SIDES)	X	X					X	X

PREFIXES & FUNCTIONS	LOCK POCKET OPTIONS TABLE		
	DIM "J" LOCK FRONT	DIM "K" POCKET WIDTH	DIM "L" POCKET DEPTH
STANDARD	1.250 ± 0.15	1.125	4.563
1- PREFIX	1.062 ± 0.15	1.000	4.125
74- PREFIX	1.250 ± 0.15	1.125	4.563
RX- PREFIX OR 281/285 FUNCTIONS	1.250 ± 0.15	1.250	4.563



SARGENT ASSA ABLOY

DOOR MANUFACTURERS TEMPLATE:
 SECTIONAL INDICATOR TRIM
 WOOD DOOR
 8200 MORTISE LOCK

MAR 2026
 4747 6

SHEET 2 OF 2