

4400 Series Door Closer

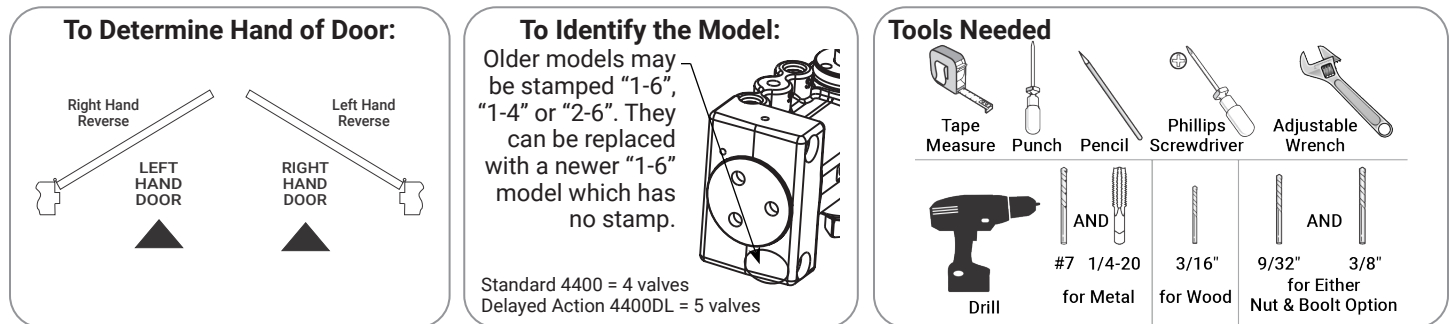
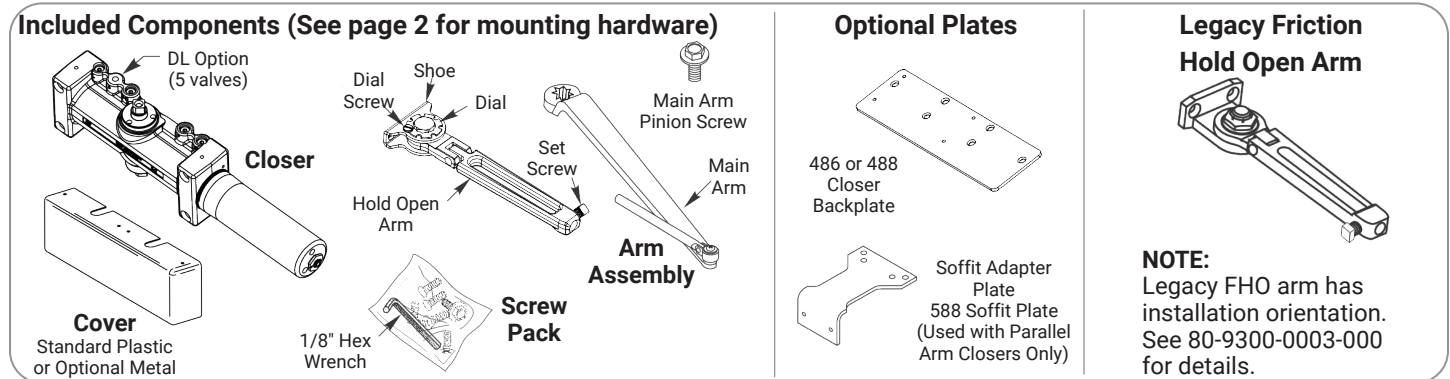
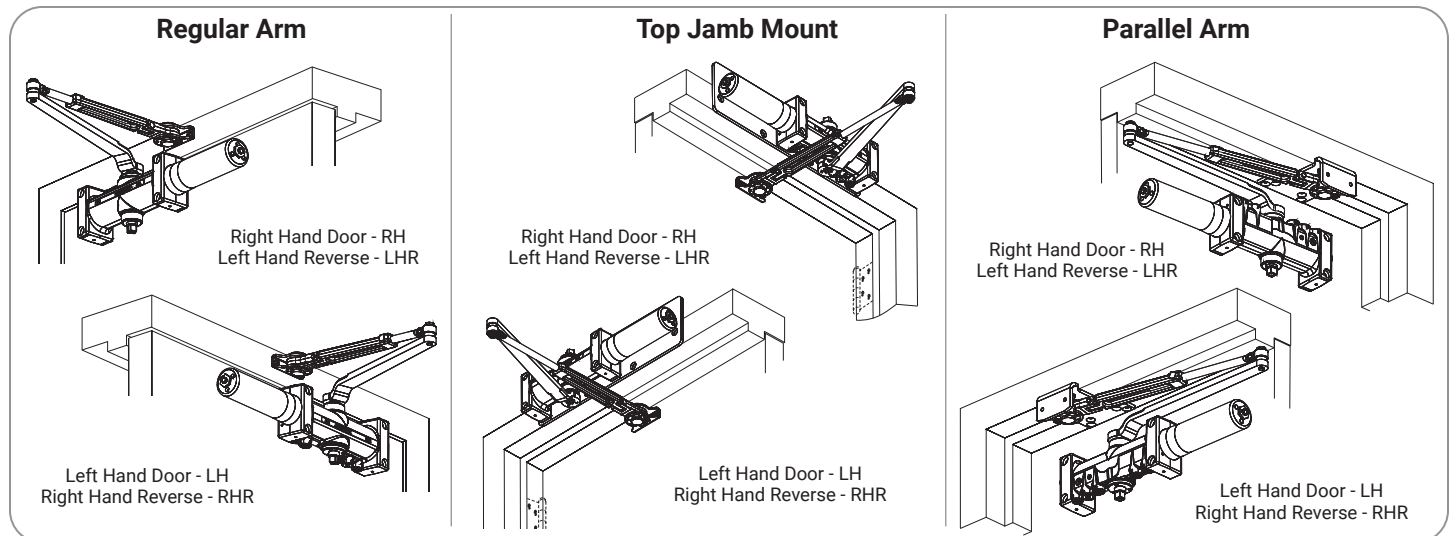
Models 4410, TJ4410, TJL4410 and PA4410

Regular, Top Jamb, or Parallel Arms, Hold Open

Installation Instructions

ACCENTRA

ASSA ABLOY



WARNING

This product can expose you to lead which is known to the state of California to cause cancer and birth defects or other reproductive harm. For more information go to www.P65warnings.ca.gov.

WARNING

Attention Installer: Any retrofit or other field modification to a fire rated opening can potentially impact the fire rating of the opening, and ASSA ABLOY makes no representations or warranties concerning what such impact may be in any specific situation. When retrofitting any portion of an existing fire-rated opening, or specifying and installing a new fire-rated opening, please consult with a code specialist or local code official (Authority Having Jurisdiction) to ensure compliance with all applicable codes and ratings.

855-557-5078 x 2 • www.accentra-assaabloy.com

Copyright © 2019, 2024, ASSA ABLOY ACCENTRA™ Access and Egress Hardware Group, Inc. All rights reserved. Reproduction in whole or in part without the express written permission of ASSA ABLOY Access and Egress Hardware Group, Inc. is prohibited.






80-9344-3204-010 Rev 2 05/24

Experience a safer
and more open world

ATTENTION:

An incorrectly installed or improperly adjusted door closer can cause property damage or personal injury. These installation instructions should be followed to avoid the possibility of misapplication or misadjustment.

- For special applications, a separate door and frame preparation template is packed with these instructions. Use these instructions for installation sequence and closer adjustments only.
- 4400 Series closing force is adjustable from 1-6 as outlined in ANSI Standard A156.4. When closer is adjusted to conform to ADA reduced opening force requirements (5 lbs max.) for interior doors, it may not have adequate closing force to reliably close and latch door. Charted power adjustments in instructions are recommended where possible, to ensure proper door control.
- Doors should be hung on ball bearing or anti-friction hinges.
- A separate door stop is recommended.
- Always consult door/frame manufacturer for fastener compatibility.
- Door and frame must be properly reinforced.
- Adjust closing time speed between 3 and 7 seconds from 90° to 0°.
- These door closers should NOT be installed on exposed side (weather side) of exterior doors.
- Dimensions are given in inches (millimeters).

Mounting Hardware	Door or Frame	Drill
 Closer, H/O Shoe or Optional PA Bracket: 1/4-14 x 1-1/2 Oval Flat Head Mach. Screw	Wood	3/16" (4.76mm)
 Closer, H/O Shoe or Optional PA Bracket: 1/4-20 x 3/4 Oval Flat Head Mach. Screw	Metal	Drill #7 (.201 dia. or 5.10mm) Tap 1/4-20
 H/O Shoe to Optional PA Bracket: 1/4-20 x 1/2 Oval Flat Head Mach. Screw		
 Closer: Sleeve Nut and Bolt (SNB) (optional)	Hollow Metal	9/32" (7.00mm) thru 3/8" (9.50mm) door face opposite to closer
	Aluminum or Wood	3/8" (9.50mm) thru
 Closer: Thru Bolt and Grommet Nut (TBGN) (optional)	All	9/32" (7.00mm) thru 3/8" (9.50mm) dia. x 3/8" (9.500mm) deep, door face opposite to closer

Closer Adjustments

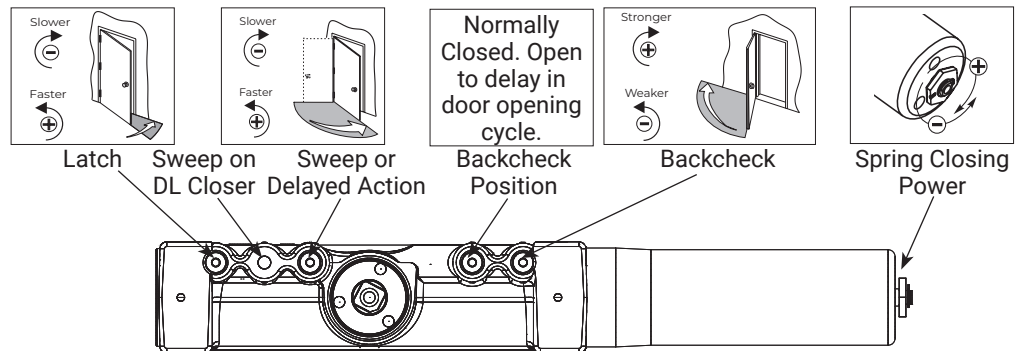


Use provided hex wrench to turn valves.

NEVER force valves out of closer.
NEVER completely close backcheck valve.

Door must be open to adjust spring closing power. Refer to specific charts on installation pages.

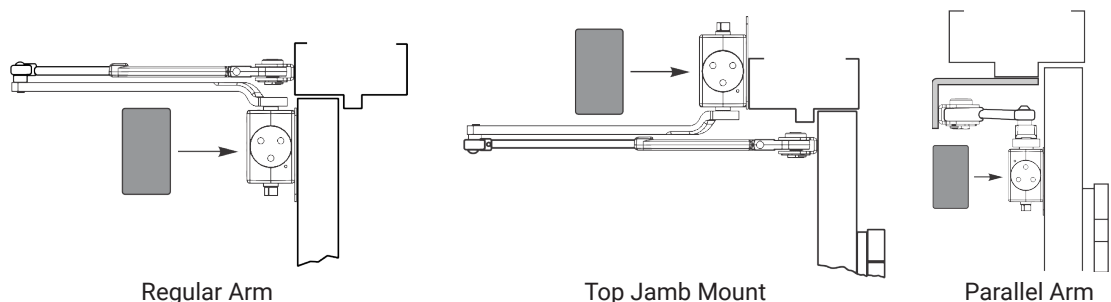
Do not use a power drill. Warranty will be void.



Cover



Do not over tighten screws.



Experience a safer
and more open world

Models 4410, TJ4410, TJL4410 and PA4410

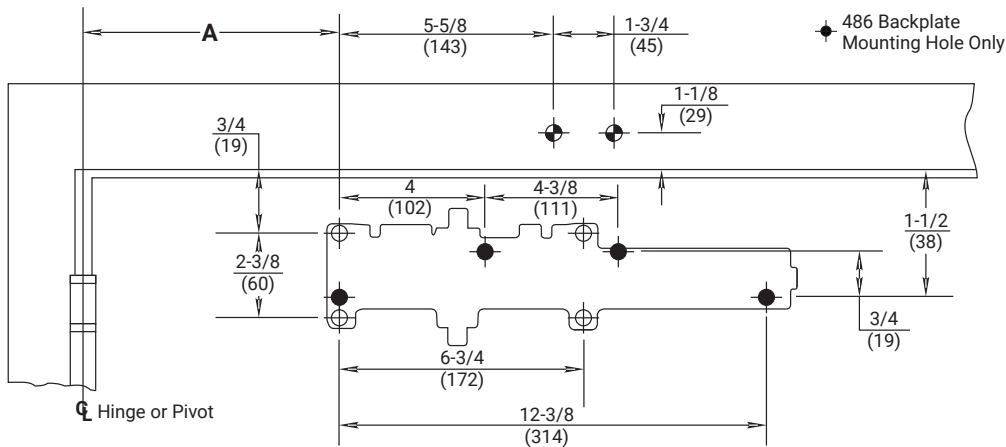
Regular, Top Jamb, or Parallel Arms, Hold Open

ACCENTRA

ASSA ABLOY

Regular Arm Installation

A. Prepare door and frame.



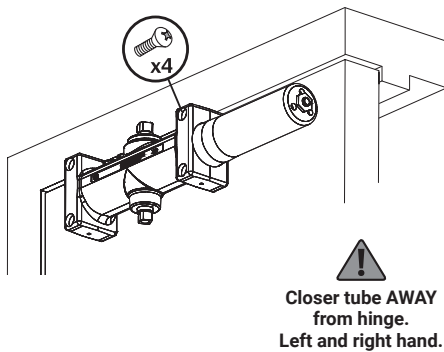
Opening	Dimension A inches (mm)
to 100°	7-5/8 (194)
101° to 120°	6-5/8 (168)
121° to 150°	4-5/8 (117)
151° to 180°	4-1/8 (105)

Power Adjustment Chart

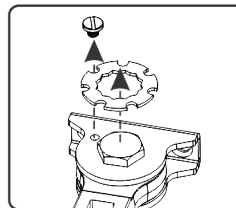
Maximum Interior Door Size	Maximum Exterior Door Size	Turns from Zero
32" (81cm)	28" (71cm)	5
36" (91cm)	34" (86cm)	8-1/2
42" (107cm)	38" (96cm)	11
52" (132cm)	42" (107cm)	13-1/2
60" (152cm)	48" (122cm)	16-1/2

NOTE: Maximum of 16-1/2 turns (360°) of Power Adjustment Nut.

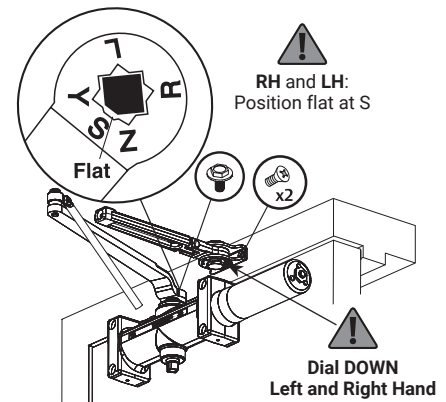
B. Mount closer to door.



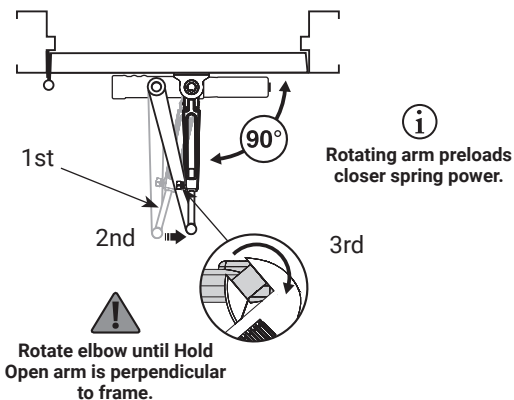
C. Remove dial from Hold Open arm.



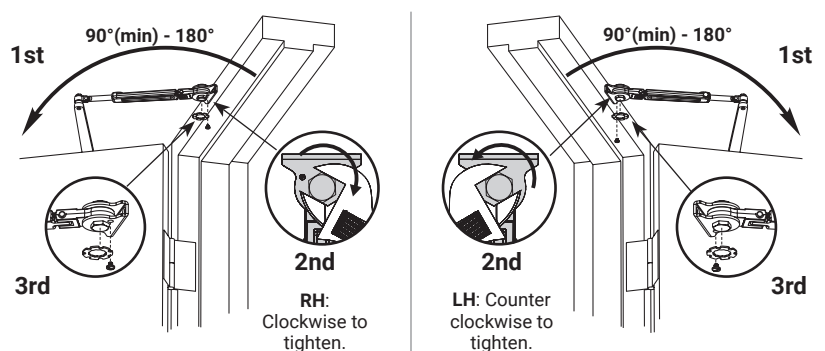
D. Install separate arms.



E. Connect arms, preload spring and tighten set screw.



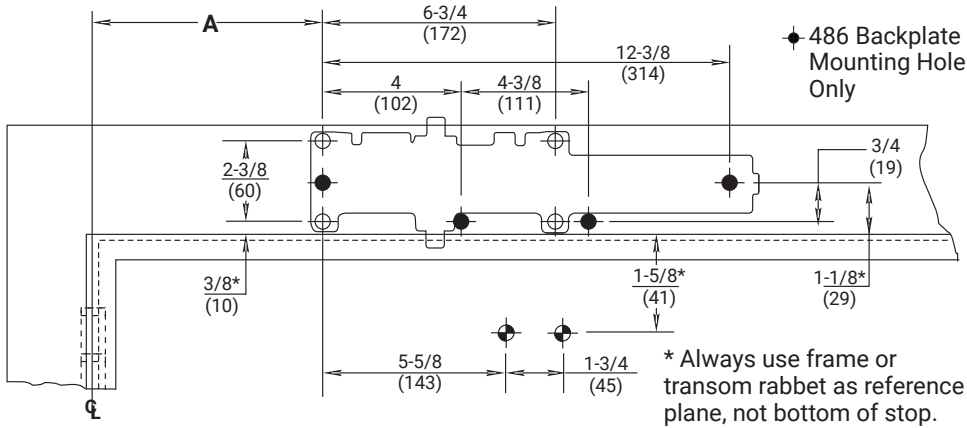
F. Set Hold Open.



● Go to page 2 for closer adjustments and cover installation.

Top Jamb Mount Installation

A. Prepare door and frame.



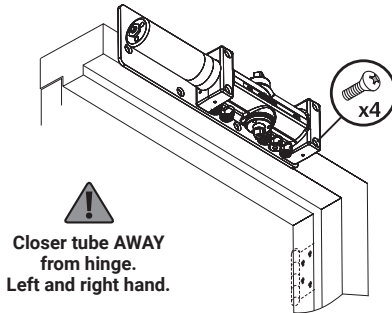
Opening	Dimension A inches (mm)
to 100°	7-5/8 (194)
101° to 120°	6-5/8 (168)
121° to 150°	4-5/8 (117)
151° to 180°	4-1/8 (105)

Power Adjustment Chart

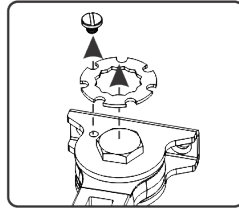
Maximum Interior Door Size	Maximum Exterior Door Size	Turns from Zero
32" (81cm)	28" (71cm)	5
36" (91cm)	34" (86cm)	8-1/2
42" (107cm)	38" (96cm)	11
52" (132cm)	42" (107cm)	13-1/2
60" (152cm)	48" (122cm)	16-1/2

NOTE: Maximum of 16-1/2 turns (360°) of Power Adjustment Nut.

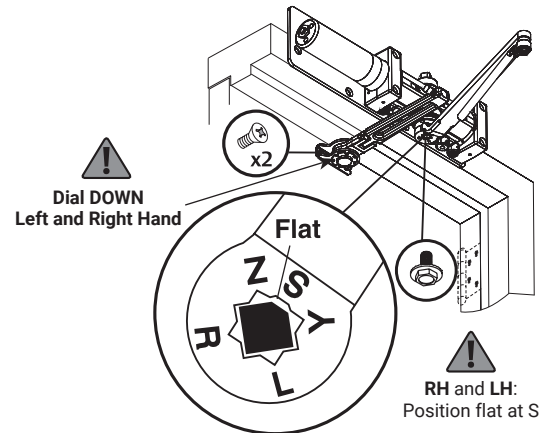
B. Mount optional backplate and/or closer to frame.



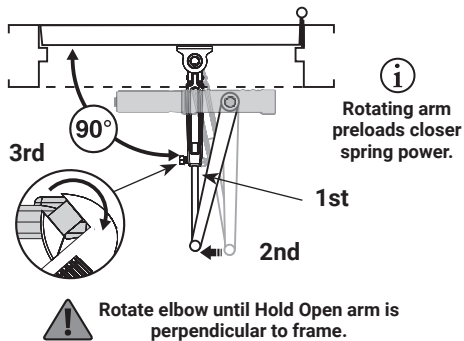
C. Remove dial from Hold Open arm.



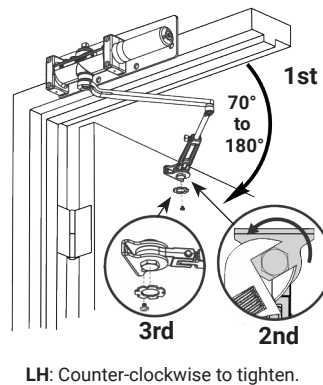
D. Install separate arms.



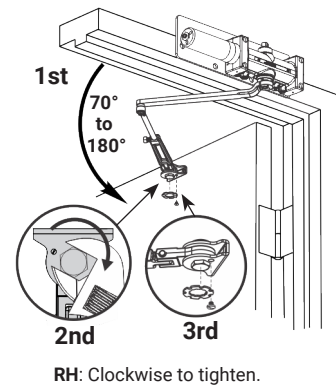
E. Connect arms, preload spring and tighten set screw.



F. Set Hold Open.



Keep door open in position until dial screw secures dial.



Go to page 2 for closer adjustments and cover installation.

Models 4410, TJ4410, TJL4410 and PA4410

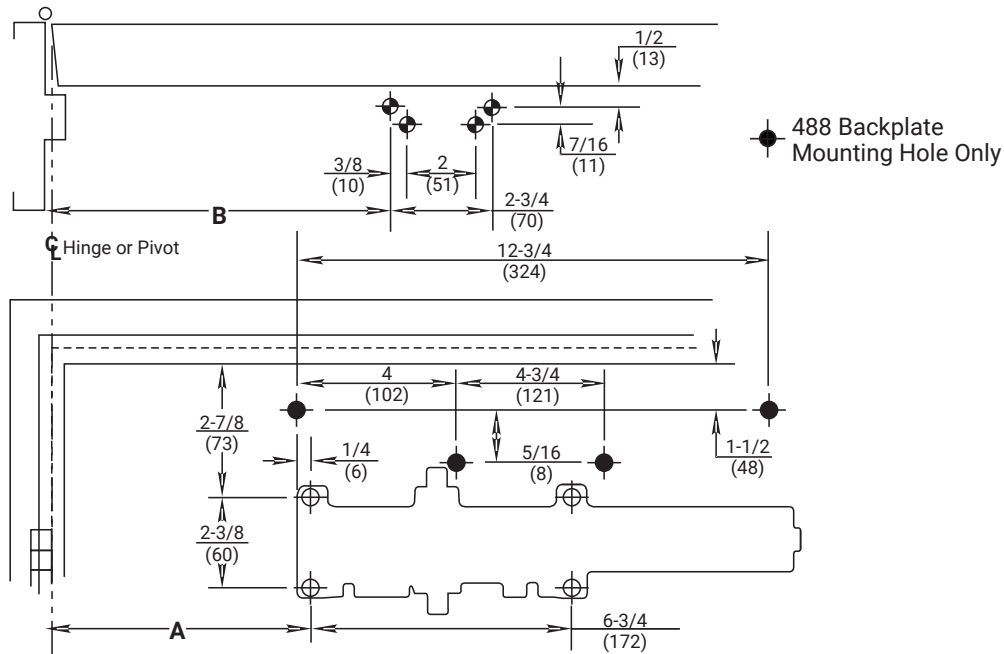
Regular, Top Jamb, or Parallel Arms, Hold Open

ACCENTRA

ASSA ABLOY

Parallel Arm Installation

A. Prepare door and frame.

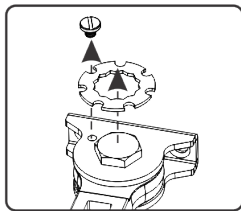


Opening	Dimension A inches (mm)	Dimension B inches (mm)
to 100°	8-3/4 (222)	9-1/4 (235)
101° to 130°	7-1/4 (184)	7-3/4 (197)
131° to 150°	6-1/4 (159)	6-3/4 (171)
151° to 180°	5-1/4 (133)	5-3/4 (146)

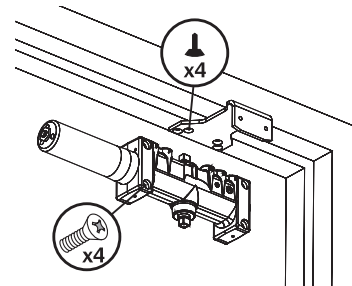
Power Adjustment Chart		
Maximum Interior Door Size	Maximum Exterior Door Size	Turns from Zero
30" (76cm)	26" (66cm)	7
34" (86cm)	30" (76cm)	9
38" (97cm)	36" (91cm)	12-1/2
48" (122cm)	42" (107cm)	14-1/2
54" (137cm)	48" (122cm)	16-1/2

NOTE: Maximum of 16-1/2 turns (360°) of Power Adjustment Nut.

B. Remove dial from Hold Open arm.

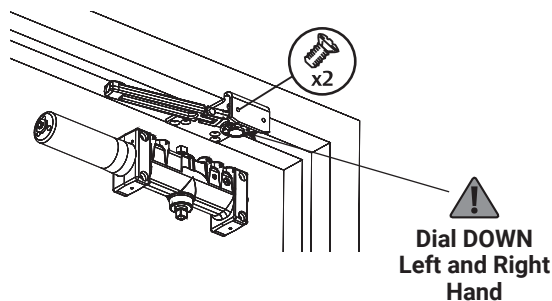


C. Install soffit plate and mount closer.



!
Closer tube **AWAY**
from hinge.
Left and right hand.

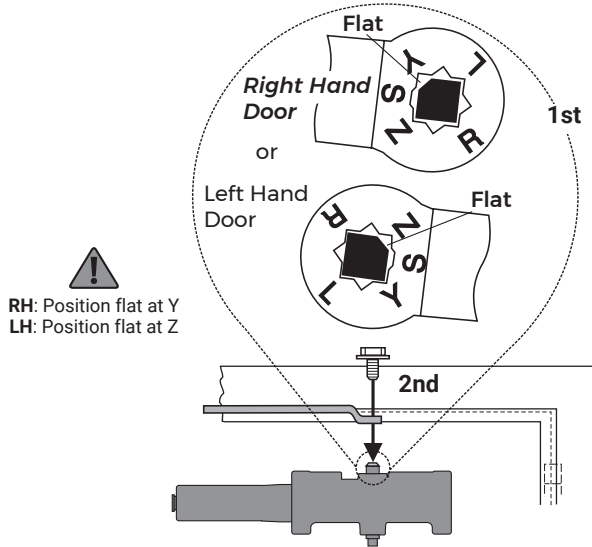
D. Install Hold Open arm to plate.



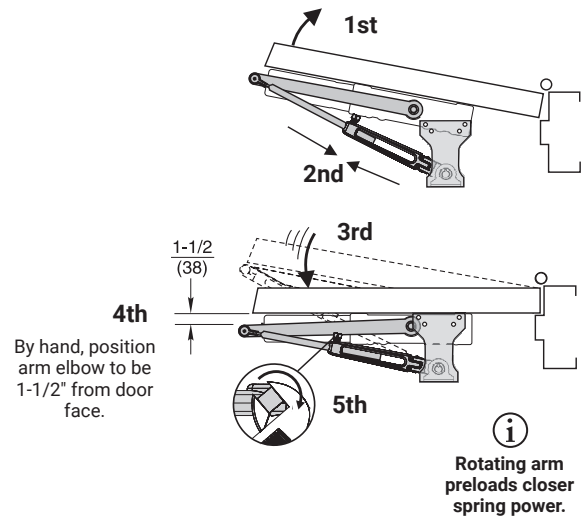
...continued on next page.

Parallel Arm Installation (cont.)

E. Place main arm on closer spindle as shown.

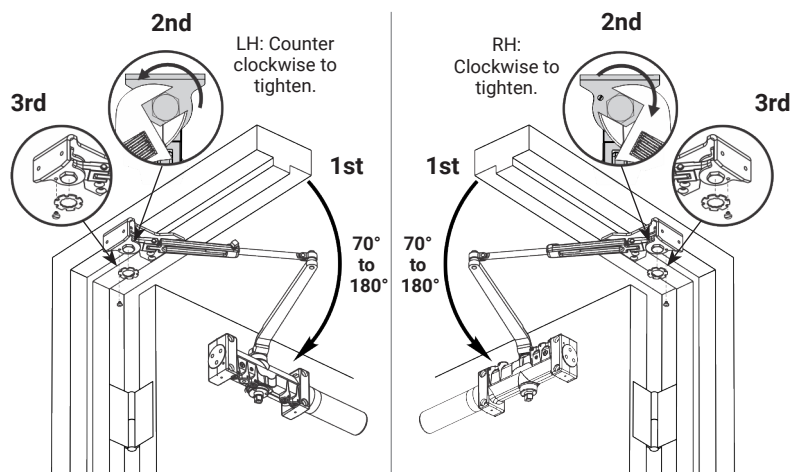


F. Connect arms, preload and tighten set screw.



G. Set Hold Open.

! Keep door open in position until dial screw secures dial.



● Go to page 2 for closer adjustments and cover installation.