

The ASSA ABLOY Group is the global leader in access solutions. Every day we help people feel safe, secure and experience a more open world.

ASSA ABLOY Door Group eBook

Decorative Solutions

Experience a safer and more open world

Public

ASSA ABLOY

Decorative Solutions eBook

This eBook is designed to provide an overview of Decorative solutions from Ceco Door and Curries.

To advance to the next slide, click the Green Arrow at the bottom right of the page.

To advance to a different section, click on the desired product below or box at the bottom of the page.



Decorative
Frames



Factory
Prefinish



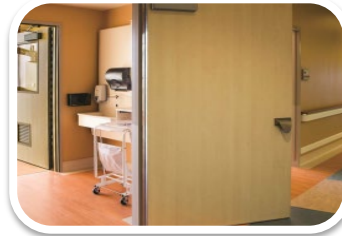
Applied
Moldings



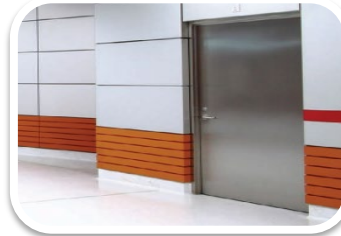
Embossed
Panels



Rite Door



Specialty Wood
& PLAM



Stainless Steel



Wood Grain

Decorative
Solutions

Decorative
Frames

Factory
Prefinish

Applied
Moldings

Embossed
Panels

Rite Door

Specialty Wood
& PLAM

Stainless Steel

Wood Grain

Value
Proposition

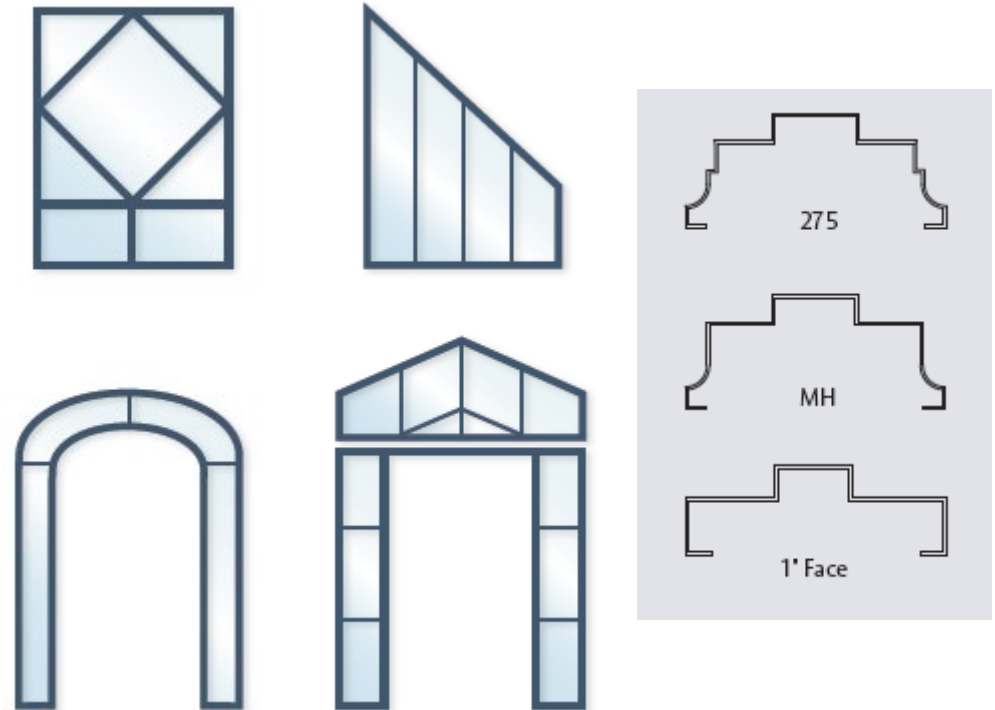
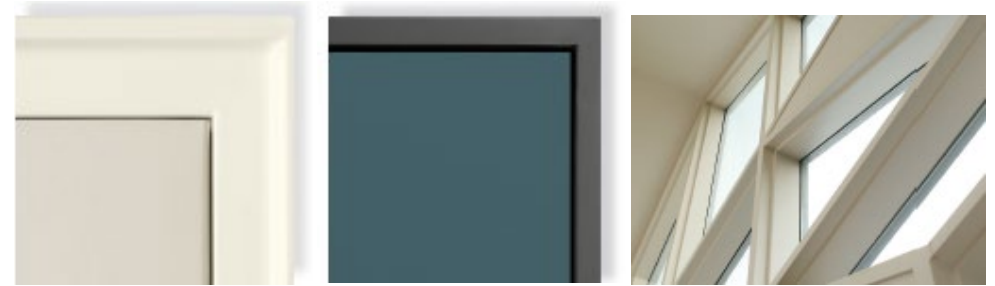
Tools &
Resources



Decorative Frames

Decorative steel door frames can contribute to the look and feel of the door opening and overall aesthetic of the entire building. Custom designed steel windows, transoms, sidelights and borrowed lights can increase day lighting and style to any building.

- Many custom frame profiles and configurations are available including 1" face frames and frames with a wood millwork look
- Most decorative frames are available in 18, 16, or 14 gauge masonry and drywall construction with knocked down or welded corners and can be fire rated up to 3 hours
- All frames receive a factory baked-on coat of rust inhibitive primer, and are also available with optional factory [pre-finish paint](#)
- Energy efficient options available
- Almost any design shape or size can be produced for any application



Decorative
Solutions

Decorative
Frames

Factory
Prefinish

Applied
Moldings

Embossed
Panels

Rite Door

Specialty Wood
& PLAM

Stainless Steel

Wood Grain

Value
Proposition

Tools &
Resources

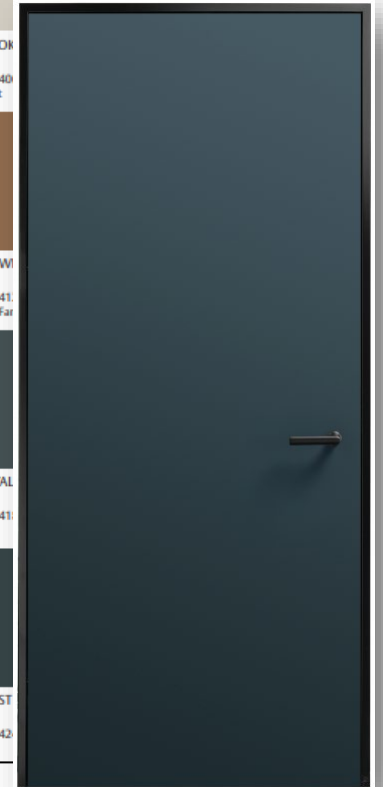


Factory Prefinished Paint

Ceco and Curries are some of the few manufacturers with the capability to deliver both custom and standard commercial grade factory prefinished doors and frames.

- The color designers at PPG have selected top color recommendations by vertical market to complement the designs used by many architects and end users
- With prefinished products, a building's project manager has more flexibility to complete the job correctly and on schedule
- Factory Prefinish is extremely durable and is factory applied in a controlled environment to ensure consistent and high quality results
- All factory paints and application processes are in compliance with strict EPA standards for state and national levels
- Doors and welded or knocked down frames with standard and custom colors to choose from
- Lower finishing cost as factory finishing is more efficient than jobsite preparation and painting
- A green solution. Compliance with LEED EQ 4.1 and 4.2 for VOC levels at jobsite (HAPs free)

Recommendations by Vertical Market					
Multi-Family Restaurants Commercial	Retail Education Healthcare	Government Hotel			
					GYPSUM PPG1006-1 Curries # 9832-1401B Retail, Education
RADISSON PPG1013-1 Curries # 9832-1402B Hotel	OATMEAL PPG1023-1 Curries # 9832-1403B Restaurant, Multi-Family	MOUNTAIN GRAY PPG1021-1 Curries # 9832-1404B Healthcare, Commercial	WHISKERS PPG1025-3 Curries # 9832-1405B Education	SWIRLING SMOKE PPG1007-2 Curries # 9832-140 Government	
HOT STONE PPG1007-4 Curries # 9832-1408B Healthcare	STONEHENGE GREIGE PPG1024-5 Curries # 9832-1409B Retail	PONY TAIL PPG1086-4 Curries # 9832-1410B Multi-Family	CONFIDENCE PPG1078-5 Curries # 9832-1411B Government	CARAVEL BROWN PPG1079-6 Curries # 9832-141 Restaurant, Multi-Fa	
DARK ASH PPG1025-5 Curries # 9832-1414B Restaurant	DOVER GRAY PPG1001-5 Curries # 9832-1415B Commercial	NIGHT RENDEZVOUS PPG1037-5 Curries # 9832-1416B Multi-Family	GLAZED GRANITE PPG1011-6 Curries # 9832-1417B Hotel	MOSTLY METAL PPG1036-7 Curries # 9832-141 Hotel	
SAILORS COAT PPG1153-7 Curries # 9832-1420B Restaurant, Hotel	MYSTERIOUS PPG1037-6 Curries # 9832-1421B Education	GOOSEBERRY PPG1048-7 Curries # 9832-1422C Retail, Commercial	PHANTOM MIST PPG1002-7 Curries # 9832-1423B Hotel	BLACK FOREST PPG1012-7 Curries # 9832-142 Restaurant	



Decorative
Solutions

Decorative
Frames

Factory
Prefinish

Applied
Moldings

Embossed
Panels

Rite Door

Specialty Wood
& PLAM

Stainless Steel

Wood Grain

Value
Proposition

Tools &
Resources



Applied Moldings

Adding moldings to one or both sides of a flush door can give it a custom decorative look. You control the design layout and the possibilities are endless. Perfect for *Offices, Multi-Family, Hospitality, Performing Arts, University, Assisted Living*.

- Moldings are factory installed and primed to match doors
- Multiple configurations available
- No visible seams or miters once applied
- Can be fire rated along with the door
- Steel moldings can be applied to majority of specialty products:
 - Acoustical (STC)
 - Blast Resistant
 - Bullet Resistant
 - Lead-Lined



Decorative
Solutions

Decorative
Frames

Factory
Prefinish

Applied
Moldings

Embossed
Panels

Rite Door

Specialty Wood
& PLAM

Stainless Steel

Wood Grain

Value
Proposition

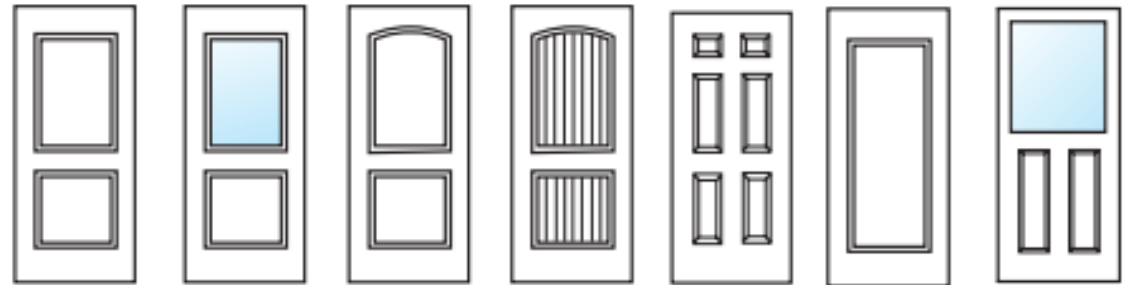
Tools &
Resources



Embossed Panels

Beautiful embossed doors with 1, 2, 4 and 6 panel designs add elegance to any opening. Embossed doors are a cost effective alternative to stile and rail wood doors. Perfect for *Offices, Multi-Family, Hospitality, Assisted Living and Dormitory Complexes.*

- Polystyrene or polyurethane core provides structural strength and resist impacts
- Mercury steel reinforced and polyurethane core for maximum energy efficiency
- Acoustical (STC) capabilities up to STC 48
- Hurricane rated options up to +/-70 psf
- Optional lights for many different aesthetic looks
- Fire rated up to 3 hours



Decorative
Solutions

Decorative
Frames

Factory
Prefinish

Applied
Moldings

Embossed
Panels

Rite Door

Specialty Wood
& PLAM

Stainless Steel

Wood Grain

Value
Proposition

Tools &
Resources



RITE Door

The RITE Door is an integrated commercial door system that meets all fire and safety regulations, is easy to install, and enhances a buildings design.

Steel Door

- Pre-installed hardware is standard and includes, designer levers, inset push/pulls and inset exit devices
- Top-latching, eliminates need for astragals in cross corridor and elevator lobby applications
- Low-profile, 3/8" projection, integrated exit device in variety of architectural finishes
- 3-hour fire-rated
- Primed, pre-finished, or faced with decorative HPL or metallic laminates
- Available with glass lights



Decorative
Solutions

Decorative
Frames

Factory
Prefinish

Applied
Moldings

Embossed
Panels

Rite Door

Specialty Wood
& PLAM

Stainless Steel

Wood Grain

Value
Proposition

Tools &
Resources



Specialty Wood & Plastic Laminate

True wood and plastic laminate over steel doors for specialty applications, providing fire-rated, lead-lined, bullet resistant and acoustical doors with the highest industry ratings.

Specialty Wood

- True wood doors available in the following specialty products:
 - Acoustical (Up to STC 53)
- Singles and pairs with glazing of various sizes including full lite options
- Various species, stains and finishes
- 20 through 90-minute fire ratings available



Specialty Plastic Laminate

- Can be applied to majority of specialty steel door products: Acoustical (STC), Blast, Bullet, Lead Lined, etc.
- Any laminate type/model available from
 - WilsonArt
 - Pionite
 - Nevamar
 - Formica
- Expands fire rating capabilities beyond true wood doors
- Applied to both faces and edges of door
- Custom widths and heights



Decorative
Solutions

Decorative
Frames

Factory
Prefinish

Applied
Moldings

Embossed
Panels

Rite Door

Specialty Wood
& PLAM

Stainless Steel

Wood Grain

Value
Proposition

Tools &
Resources



Stainless Steel

Stainless Steel offers designers significant aesthetic creative opportunities in *Commercial, Institutional, or High Style Architectural Environments.*

- Available in 304 and 316 steel for highly corrosive environments
- Many sizes and configurations including seamless construction and up to 10' tall
- Door core available with polystyrene, steel stiffened or specialty cores (lead lined, blast, bullet, water resistant)
- 3-Sided frames, sidelights, transoms, borrowed lights with standard or custom profiles
- Decorative glass options available including frosted, tinted and mirrored
- Available finishes
 - No. 4 (Brushed Satin)
 - No. 6 (Fine Satin)
 - No. 8 (Mirror)
 - No. 2B (Mill)
 - XLB (XL Blend)



Decorative
Solutions

Decorative
Frames

Factory
Prefinish

Applied
Moldings

Embossed
Panels

Rite Door

Specialty Wood
& PLAM

Stainless Steel

Wood Grain

Value
Proposition

Tools &
Resources



Wood Grain Doors

Wood Grain Doors (CURRIStain and Madera) are embossed with a plain sliced oak wood grain pattern and then factory finished with one of six standard colors or can be custom color matched which produces the look of real wood. Perfect for *Office, Hospitality, University and Schools*.

- Rich wood grain pattern engraved into a stainable steel surface with 6 standard colors along with available custom color stain matching
- Factory stained in natural wood tones with accessories and window trim to match including embossed designs
- Fire rated up to 3 hours with temperature rise options
- Moisture and vermin resistant
- .005" Deep engraved wood grain pattern
- Architecturally correct stile and rail wood grain direction on embossed doors
- Tough, clear top coat with UV protectors



Decorative
Solutions

Decorative
Frames

Factory
Prefinish

Applied
Moldings

Embossed
Panels

Rite Door

Specialty Wood
& PLAM

Stainless Steel

Wood Grain

Value
Proposition

Tools &
Resources



Wood Grain Doors – Smooth Grain

Smooth Grain (SG) Wood Grain Doors (CURRISTain SG and Madera SG) flush and paneled doors are stained on smooth steel with a tight grain design which is similar to maple, cherry or birch wood. One of six standard and most popular stain colors are available or stains can be custom color matched to virtually any color a project might require.

- Rich tight wood grain stain design with 6 standard colors along with available custom color stain matching
- Factory stained in natural and custom wood tones with accessories and window trim to match including embossed panel designs
- Increased hardware screw holding power over wood and won't crack or chip like wood
- Fire rated up to 3 hours with temperature rise options
- Moisture and pest resistant
- Architecturally correct stile and rail wood grain direction on embossed doors
- Tough, clear top coat with UV protectors
- Consistent wood grain patterns for easy matching



Decorative
Solutions

Decorative
Frames

Factory
Prefinish

Applied
Moldings

Embossed
Panels

Rite Door

Specialty Wood
& PLAM

Stainless Steel

Wood Grain

Value
Proposition

Tools &
Resources



Value Proposition

Benefits

- **Decorative Frames:** Can contribute to the look and feel of the door opening and overall aesthetic of the entire building. Custom designed steel windows, transoms, sidelights and borrowed lights can increase day lighting and style to any room or application including 1" face frames and frames with a wood millwork look.
- **Factory Prefinish Paint:** Custom and standard commercial grade factory prefinished doors and frames that eliminates concerns with on-site painting: jobsite mess, toxic-smelling fumes, disposal of solvents and other painting supplies.
- **Applied Moldings:** Can be added to one both sides of the door for a custom look. Possibilities are endless on layout design choices and can help beautify specialty doors including, bullet, blast, acoustical (STC) and lead-line doors.
- **Embossed Panels:** Doors in 1, 2, 3, 4 and 6 panel embossed designs add elegance to any opening and can be provided with acoustical (STC) capabilities, energy efficient cores, ADA compliant designs and fire ratings up to 3 hours. Attractive alternative to stile and rail wood doors.



Decorative
Solutions

Decorative
Frames

Factory
Prefinish

Applied
Moldings

Embossed
Panels

Rite Door

Specialty Wood
& PLAM

Stainless Steel

Wood Grain

Value
Proposition

Tools &
Resources



Value Proposition

Benefits

- **RITE Door:** Offers unique, aesthetic door finishes, designer options and distinct preassembled hardware devices. Blends into the wall for clean lines or can make a design statement in hallways, elevator lobby's or almost any room in the facility.
- **Specialty Wood and PLAM:** Perfect application when a wood door look is needed in specialty applications involving, bullet, blast, acoustical (STC) and lead-line doors. Many wood species, stains and finish choices available.
- **Stainless Steel:** Ideal solution for clean room environments and areas susceptible to moisture. Stainless Steel offers designers significant aesthetic creative opportunities in commercial, institutional, or high style architectural environment.
- **Wood Grain Doors:** Warm look of wood with the strength and durability of steel. Rich open or tight wood grain patterns with 6 standard colors along with available custom color stain matching including fire ratings up to 3 hours with temperature rise options.



Decorative
Solutions

Decorative
Frames

Factory
Prefinish

Applied
Moldings

Embossed
Panels

Rite Door

Specialty Wood
& PLAM

Stainless Steel

Wood Grain

Value
Proposition

Tools &
Resources



Tools and Resources

Door Group Tools and Resources

- Decorative Openings Webpages
 - [Ceco Door](#)
 - [Curries](#)
- [Decorative Door and Frame Solutions Brochure](#)
- [Decorative Frames Promo Sheet](#)
- [Applied Moldings](#)
- [Specialty Wood and PLAM](#)
- Embossed Panels
 - [Ceco Door](#)
 - [Curries](#)
- Factory Prefinished Paint
 - [Ceco Door](#)
 - [Curries](#)



- [Rite Door Website](#)
- Stainless Steel
 - [Ceco Door](#)
 - [Curries](#)
- Wood Grain Doors
 - [Ceco Door Madera](#)
 - [Curries CURRISTain](#)
 - [Ceco Door Madera SG](#)
 - [Curries CURRISTain SG](#)

The Good Design Studio

- [Website](#)
- [Blog](#)
- [Decorative Hardware](#)

Decorative
Solutions

Decorative
Frames

Factory
Prefinish

Applied
Moldings

Embossed
Panels

Rite Door

Specialty Wood
& PLAM

Stainless Steel

Wood Grain

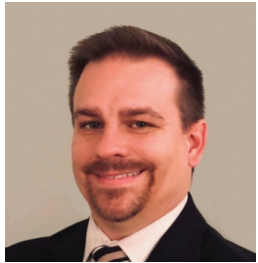
Value
Proposition

Tools &
Resources



Tools and Resources

Who Can help?



General Questions

Trent Turner
Director of Product Marketing
ASSA ABLOY Door Group
Trent.Turner@assaabloy.com
(731) 571-1433



Specialty Questions

Marc Stroot
Business Development Manager,
Specialty & Integrated Solutions
ASSA ABLOY Door Group
Marc.Stroot@assaabloy.com
(218) 828-6256 x3294



Decorative Hardware Questions

Sandra C. Matheny
Director – Decorative Openings
ASSA ABLOY Door Security Solutions
Sandra.Matheny@assaabloy.com
(203) 499 6889

Decorative
Solutions

Decorative
Frames

Factory
Prefinish

Applied
Moldings

Embossed
Panels

Rite Door

Specialty Wood
& PLAM

Stainless Steel

Wood Grain

Value
Proposition

Tools &
Resources





Thank you
assaabloydss.com

Experience a safer and more open world

Public

ASSA ABLOY