

Architectural Door Accessories

ASSA ABLOY
Opening Solutions

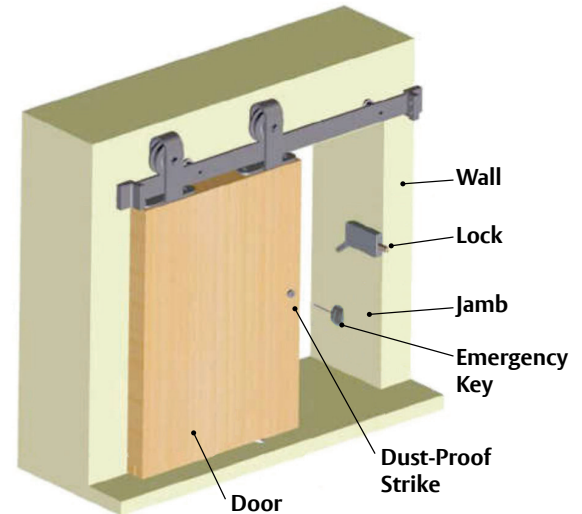
SDL Privacy Barn Door Lock Surface Jamb Mount Instructions

Experience a safer
and more open world

Installation based on barn door application where doors are hung on OUTSIDE of room.

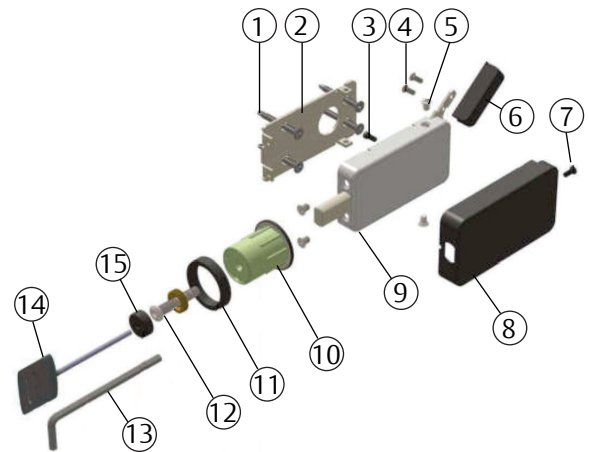
- Install lock on jamb wall facing opening
- Install strike with an emergency release on barn door
- Adjustable strike for door thickness from 1-3/8" to 2"
- Thick door kits available

Part Number	Deadbolt	Thumb-Lever	Lock Case
SDL_	1"	13/16"	3-9/16" x 1-7/8" x 9/16"
SDL_-ADA	1"	1-9/16"	3-9/16" x 1-7/8" x 9/16"

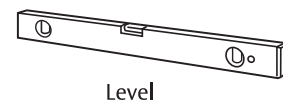
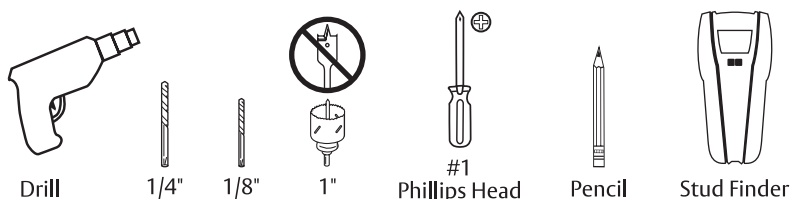


SDL Series Privacy Door Lock Set Parts:

Items	No.	Description	Function/Privacy
Lock	1	#8 x 1-1/2" Wood Combo Screw	4 EA
	2	Mounting Plate	1 EA
	3	M3 x 7mm Handing Screw	1 EA
	4	M3 x 6mm Thumb Piece Screw	2 EA
	5	M4 x 6mm Installation Screw	4 EA
	6	Thumb Piece	1 EA
	7	M3 x 6mm Cover Screw	1 EA
	8	Lock Body Cover	1 EA
	9	Barn Door Lock Body	1 EA
Strike	10	Dust Proof Strike	1 EA
	11	Washer	1 EA
	12	Hollow Screw	1 EA
Other	13	4mm Allen Wrench	1 EA
	14	Emergency Key	1 EA
	15	Decorative Cap	1 EA
	-	Door Prep Template	1 EA
	-	Installation Instruction	1 EA

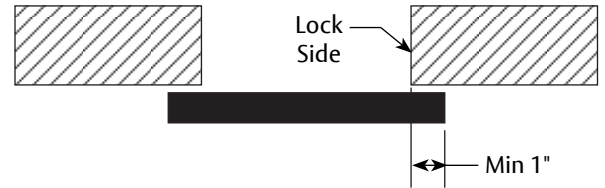


Tools Needed:



1. Prep Wall and Door

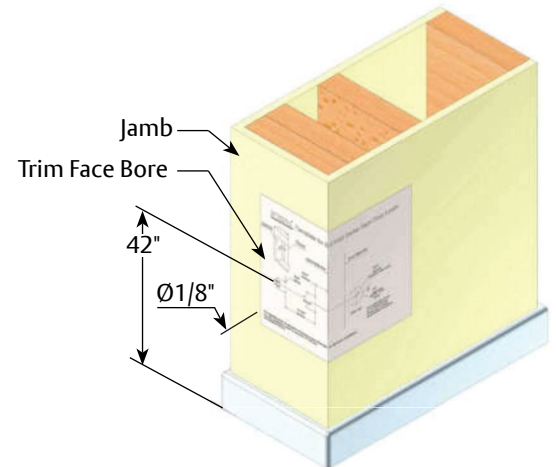
Ensure minimum 1" (25mm) door overlap before installing SDL Privacy Lock.



2. Prep Jamb

Use template to mark and drill pilot holes.

Remove door if it interferes with lock installation.



3. Hand Lock if necessary

Install thumb lever to lock. (Fig 1)

Using a #1 Phillips screwdriver, remove handing screw and discard. (Fig 2)

Flip lever position to opposite orientation. (Fig 2)

Install new handing screw from screw pack.



Fig 1

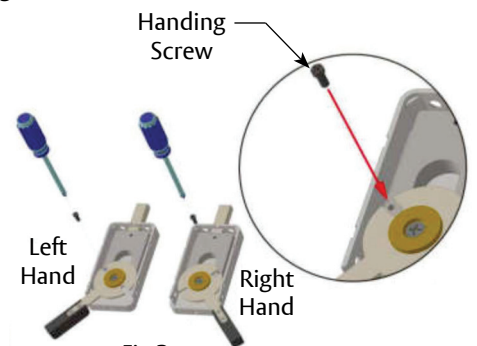


Fig 2

4. Install Lock

Attach mounting plate to door jamb using four (4) combo screws. (Fig 1)

Install lock body and secure with four (4) installation screws. (Fig 2)

Install lock cover and screw. (Fig 3)

- Slide front of cover over body, hooking alignment tab onto body.
- Push back of cover over body to snap into place.

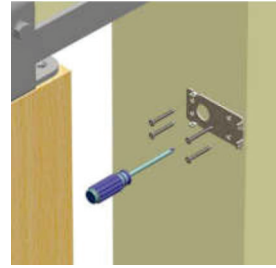


Fig 1

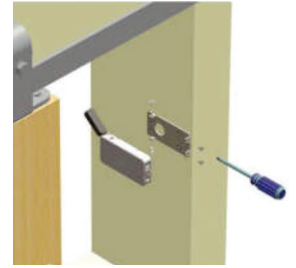


Fig 2

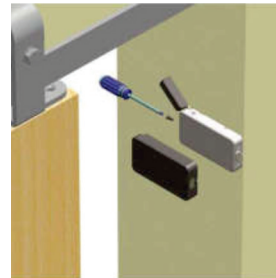


Fig 3

5. Prep Barn Door for Dust Proof Strike with Emergency Release

Close barn door; throw lock bolt to mark exact strike center position. Ensure minimum of 1" to edge of door. (Fig 1)

Using strike center as guide, drill pilot hole through door from strike side with 1/8" bit. With pilot hole as guide, use 1" hole saw to drill 1-1/4" deep hole. DO NOT DRILL THROUGH DOOR. (Fig 2)

Using pilot hole as a guide, use 1/4" bit to drill a hole from outside through to connect with strike bore. (Fig 3)

NOTE: Standard barn door to wall clearance is approximately 3/8" to 1/2". Install additional spacer behind strike faceplate as needed if door to wall clearance is over 1/2". Additional spacers can support maximum clearance of 3/4" between door and wall. (Fig 4)

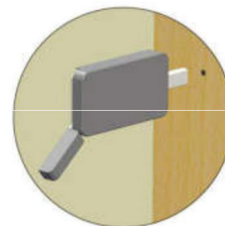


Fig 1

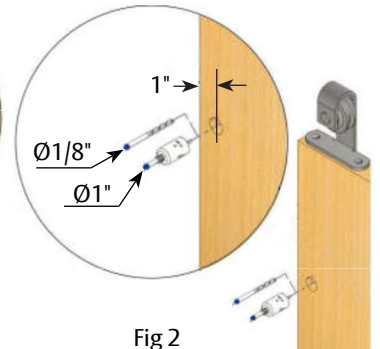


Fig 2

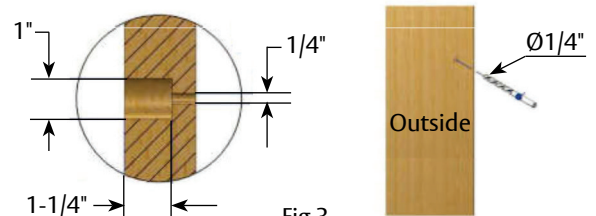


Fig 3

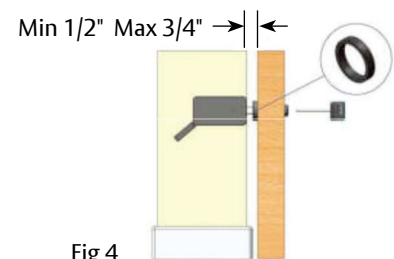


Fig 4

6. Install Dust Proof Strike with Emergency Release

Install 1" dust proof strike with 1/4" release screws on outside. (Fig 1)

Cut break-away screw to appropriate door thickness. DO NOT OVER TIGHTEN. (Fig 2)

Install break-away screw and tighten with Allen wrench. DO NOT OVER TIGHTEN. Screw on decorative cap by hand. (Fig 3)

Use release key, provided with lock set, to push through center hole on release to push lockbolt back and unlock door. (Fig 4)

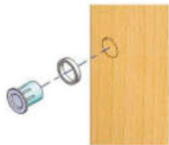


Fig 1

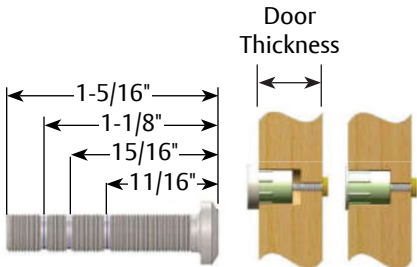


Fig 2

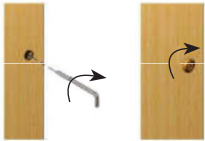


Fig 3

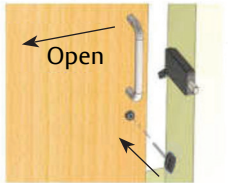


Fig 4

Door Thickness	Length without Spacer	Length with Spacer
1-3/8"	11/16"	15/16"
1-3/4"	1-1/8"	1-5/16"