

4400 Series Door Closer

Models UNI4400(DL) and UNI4410(DL)

UNI Stop™ Parallel Arm, Non-Hold Open and Hold Open Installation Instructions

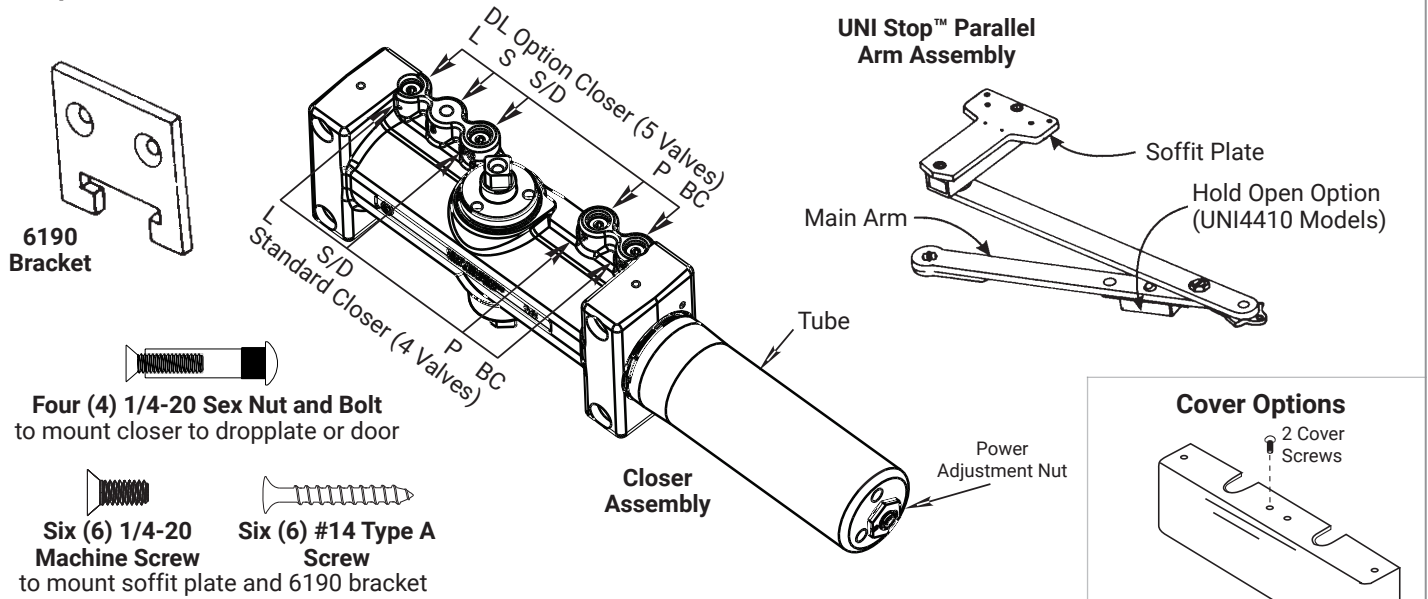
ACCENTRA

ASSA ABLOY

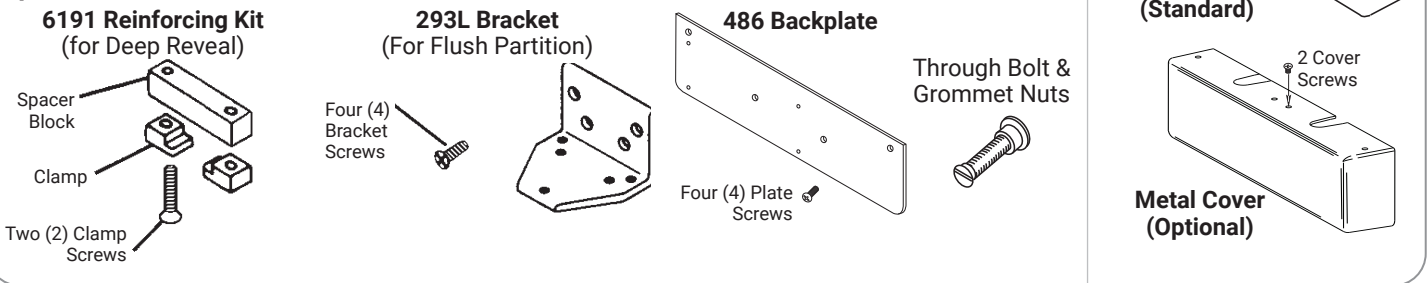
- Use these instructions for installing all models of this series on 1-3/4" (45mm) doors hung on 4-1/2" (114mm) wide hinges or 3/4" (19mm) offset pivots.
- DOOR WIDTH determines the location of the closer. Use ONLY the template chart corresponding to your door width.
- Use ONLY the dimensions given in each template chart for the door total OPENING angle or the HOLD OPEN angle desired.
- UNI Stop™ parallel arms are supplied in one of three lengths, according to door width specified on order. To verify that the ARM is CORRECT FOR THE DOOR WIDTH, check the number stamped on the arm against the chart.

Door Width	Non-Hold Open Arm	Hold Open Arm
28" - 32" (71 - 81cm)	6100-11	6100-1
33" - 41" (84 - 104cm)	6100-13	6100-3
42" - 48" (107 - 122cm)	6100-14	6100-4

Components



Optional Accessories



⚠ WARNING

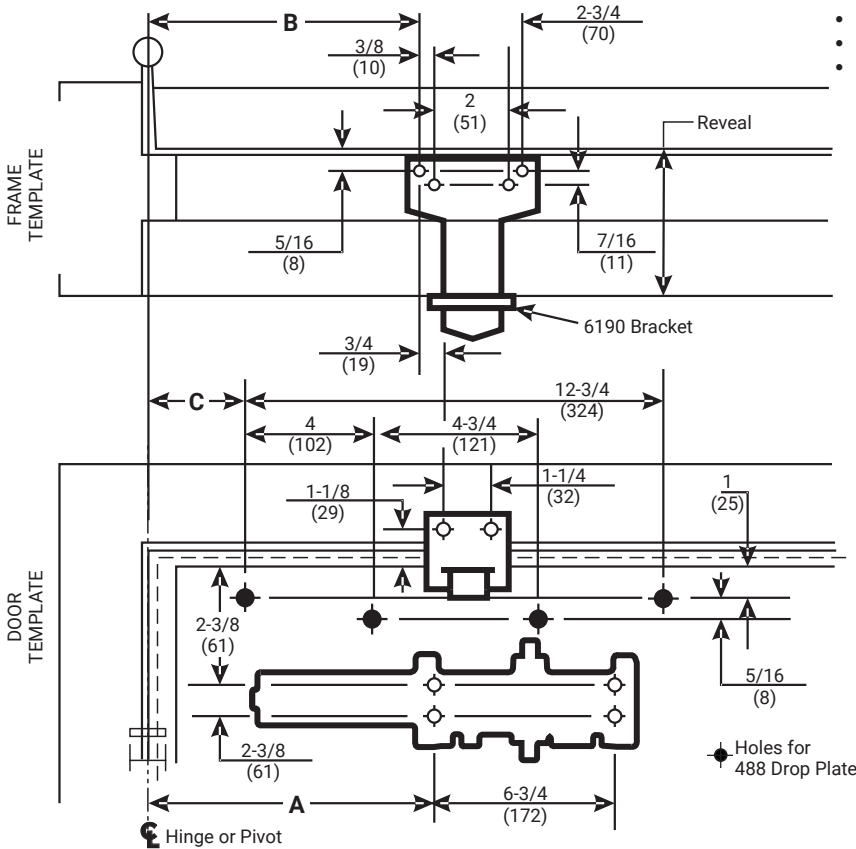
This product can expose you to lead which is known to the state of California to cause cancer and birth defects or other reproductive harm. For more information go to www.P65warnings.ca.gov.

⚠ WARNING

Attention Installer: Any retrofit or other field modification to a fire rated opening can potentially impact the fire rating of the opening, and ASSA ABLOY makes no representations or warranties concerning what such impact may be in any specific situation. When retrofitting any portion of an existing fire-rated opening, or specifying and installing a new fire-rated opening, please consult with a code specialist or local code official (Authority Having Jurisdiction) to ensure compliance with all applicable codes and ratings.

Door Template Typical for All Installations:

Frame Template for 1-7/8 to 4-5/8 Reveals.



- Door template is typical for all installations.
- Do not scale drawing.
- Left Hand Door shown.
- Dimensions are in inches (mm)
- Frame template must be selected according to frame reveal:

Frame Template: (at left)

Frame Reveals 1-7/8 (48) to 4-5/8 (117)
(Uses 6190 Bracket)

Bracket Illustration - page 3



Frame Template: (page 3)

Frame Reveals Over 4-5/8 (117)
(Uses 6191 Clamp Kit)

Bracket Illustration - page 3



Frame Template: (page 3)

Flush Partitions (Uses 293L Bracket)



Dimensions for Doors 28" to 32" Wide

Opening		Dimension A		Dimension B		Dimension C	
Hold Open	Stop	Inches	mm.	Inches	mm.	Inches	mm.
85°	90°	10-1/4	260	10-1/2	267	4-1/2	114
90°	95°	9-5/8	244	9-7/8	251	3-7/8	99
95°	100°	9-1/8	232	9-3/8	238	3-3/8	86
100°	105°	8-3/4	222	9	229	3	76
105°	110°	8-3/8	213	8-5/8	219	2-5/8	67
110°	115°	8	203	8-1/4	210	2-1/4	57

Preparation for Fasteners

Fasteners	Frame	Door	Drill-Sizes
1/4"-20 Machine Screw	Metal	None	#7 (0.201" dia) or 5.10mm drill; 1/4-20 tap
#14 Type "A" Sheet Metal Screw	Wood	None	3/16" (4.30mm)
Sleeve nuts and bolts	None	Hollow Metal	9/32" (7mm) through; 3/8" (9.5mm) door face opposite of closer
		Aluminum or Wood	3/8" (9.5mm) through

Dimensions for Doors 33" to 41" Wide

Opening		Dimension A		Dimension B		Dimension C	
Hold Open	Stop	Inches	mm.	Inches	mm.	Inches	mm.
85°	90°	12-3/4	324	12-7/8	327	7	178
90°	95°	12	305	12-1/8	308	6-1/4	159
95°	100°	11-1/2	292	11-5/8	295	5-3/4	146
100°	105°	10-7/8	276	11	279	5-1/8	130
105°	110°	10-1/2	267	10-5/8	270	4-3/4	121
110°	115°	10	254	10-1/8	257	4-1/4	108

Dimensions for Doors 42" to 48" Wide

Opening		Dimension A		Dimension B		Dimension C	
Hold Open	Stop	Inches	mm.	Inches	mm.	Inches	mm.
85°	90°	14-7/8	378	15-1/8	248	9-1/8	232
90°	95°	14	356	14-1/4	225	8-1/4	210
95°	100°	13-3/8	340	13-5/8	210	7-5/8	194
100°	105°	12-3/4	324	13	194	7	178
105°	110°	12-1/4	311	12-1/2	181	6-1/2	165
110°	115°	11-7/8	302	12-1/8	171	6-1/8	156

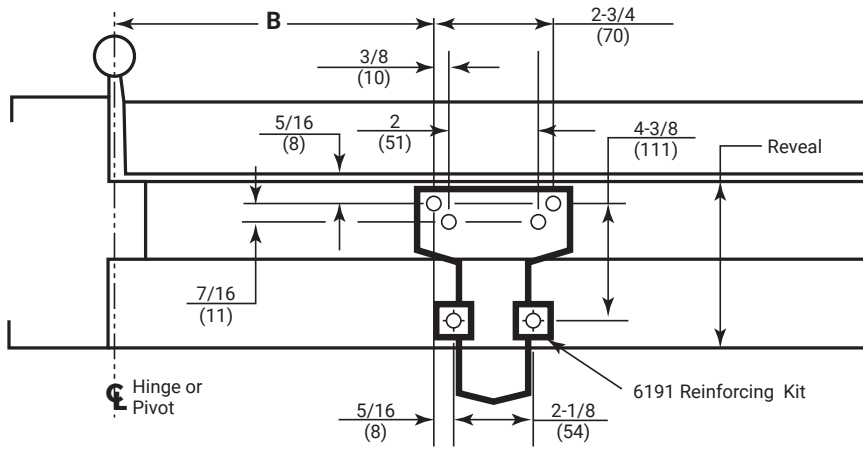
Models UNI4400(DL)and UNI4410(DL)

UNI Stop™ Parallel Arm, Non-Hold Open & Hold Open

ACCENTRA
ASSA ABLOY

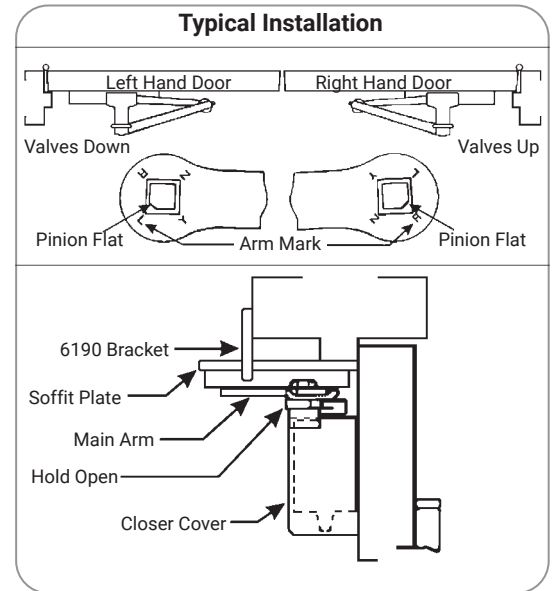
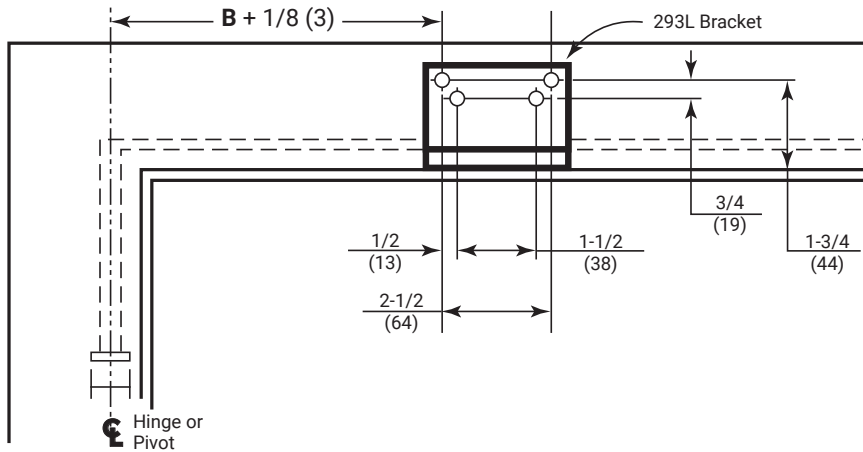
Frame Template for Reveals Over 4-5/8:

Door Template on page 2.



Frame Template for Flush Partitions:

Door Template on page 2.



Installation Sequence

- Read Front Page.**
Installations and component identification are on this page.
- Mount hardware to opening.**
Refer to the Template Information on page 2 and above.
- Mark Location of Mounting Holes.**
Use dimensions for hold open or door stop angle desired. Mark position of 4 holes on door for closer (or drop plate) and 6 holes on frame for soffit plate (or 4 for 293L angle bracket).
- Prepare Holes for Fasteners.**
Refer to the Preparation for Fasteners chart on page 2.
- Mount Closer to Door.**
Drop plate first, if used. Place spring tube toward the hinge edge of the door; closer valves up for right hand door, down for left hand door.
- Mount Arm to Frame.**
Fasten soffit plate (or 293L angle bracket if flush partition) to frame. Mount 6190 bracket or 6191 clamps to reinforce soffit plate.
- Install Arm on Pinion Shaft.**
Close valves "S". Rotate pinion over 45° to align main arm letter "R" (right hand) or "L" (left hand) with pinion flat. Fasten with arm screw. See "Typical Installation" figure above right. Re-open "S" valve.
- Adjust Closer.**
Refer to "Adjustments" on page 4.
- Install Cover and Pinion Cap, if required.**
See page 1.

Adjustments

Closing Power Control

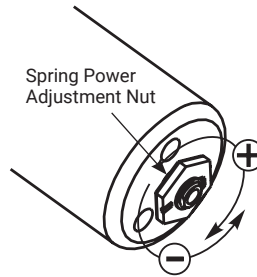
To adjust closer power, install closer per instructions with proper pre-load applied to the arm then adjust spring power.

To increase power, use 11/16" wrench to turn power adjustment nut clockwise.

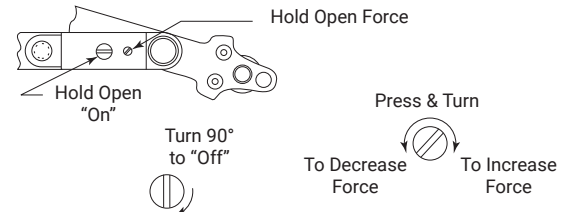
To decrease power, turn nut counter-clockwise.

NOTE: Power adjustment will not work properly if closer spring is not pre-loaded.

Power Adjustment Chart		
Door Size	Number of Full Clockwise Turns from Zero	
	Interior Door	Exterior Door
28"-32" (71-81cm)	1	3
33"-41" (84-104cm)	6	8
42"-48" (107-122cm)	9	12



Hold Open Option



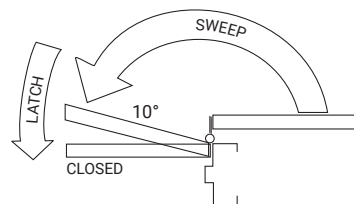
The Hold Open option is found at the arm elbow. (Models suffixed "H"). To select hold open "on", hold open "off" or to adjust the hold open force, use a flat head screwdriver as illustrated.

Closing Speed Control

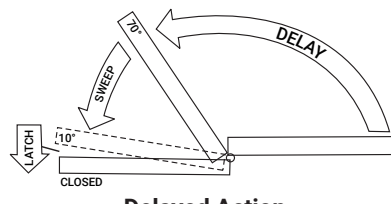
Standard Closer Only

- Valve "L" controls door speed in Latch range.
- Valve "S/D" controls door speed in Sweep range.

ATTENTION: Adjust closing speed time to between 3 and 7 seconds from 90°. Use of the door by handicapped, elderly, or small children may require a greater closing time.



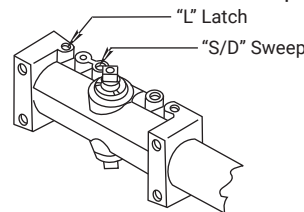
Standard Closing Cycle



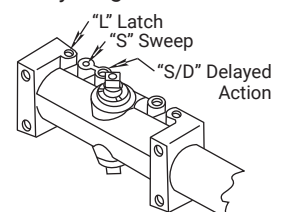
Delayed Action Closing Cycle

Delayed Action Closer Only

- Valve "L" controls door speed in Latch range.
- Valve "S" controls door speed in Sweep range.
- Valve "S/D" controls door speed in Delay range.

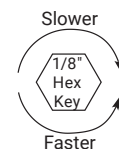


Standard Closer



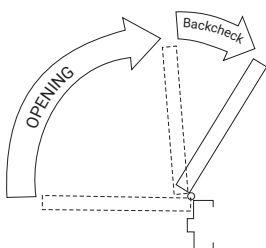
Delayed Action Closer

Do not force valves counter-clockwise out of closer body or a fluid leak will occur.



Opening Door Controls

- Backcheck ("B") valve controls the hydraulic resistance to door opening. NEVER close this valve completely – it is not to provide a positive stop.
- Backcheck Position ("P") valve controls the door angle where backcheck cushioning starts. Valve normally closed.

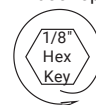


CAUTION:
Do not back valves out of closer or a leak will result.

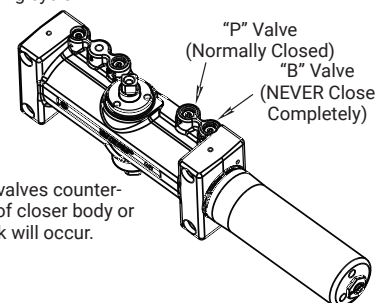
NEVER CLOSE VALVE COMPLETELY:
Not intended to provide a positive stop.

Backcheck Position

("P" Valve)
Open for backcheck later in door-opening cycle



Do not force valves counter-clockwise out of closer body or a fluid leak will occur.



Backcheck Cushion ("B" Valve)

Increase
Decrease

