

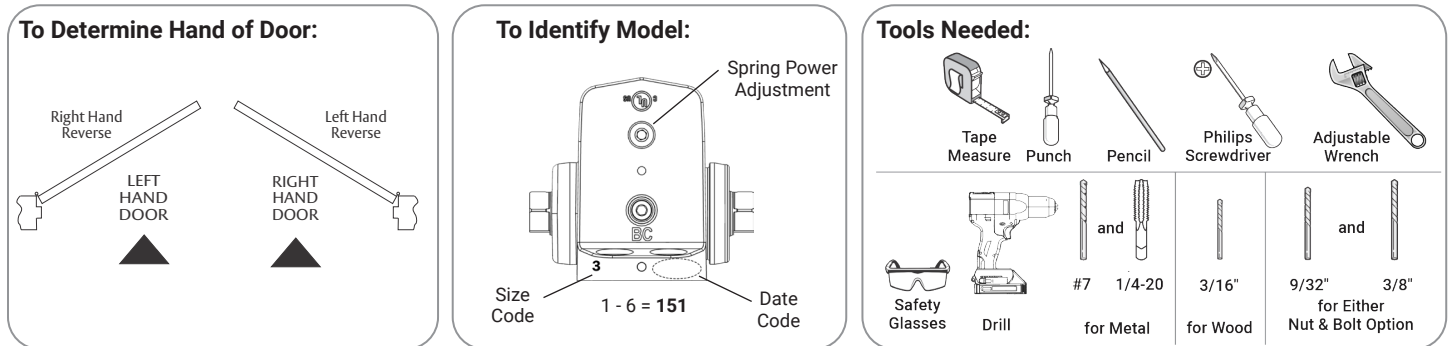
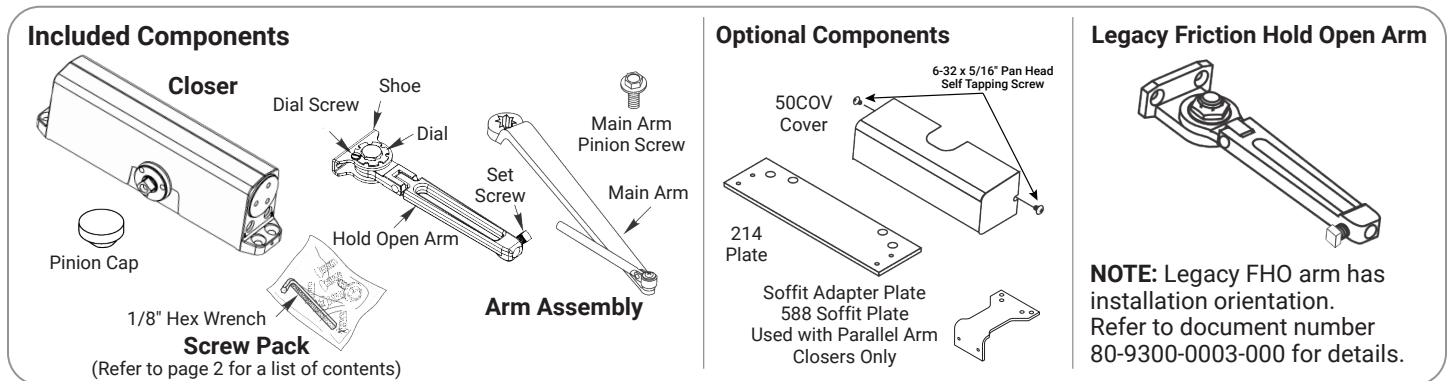
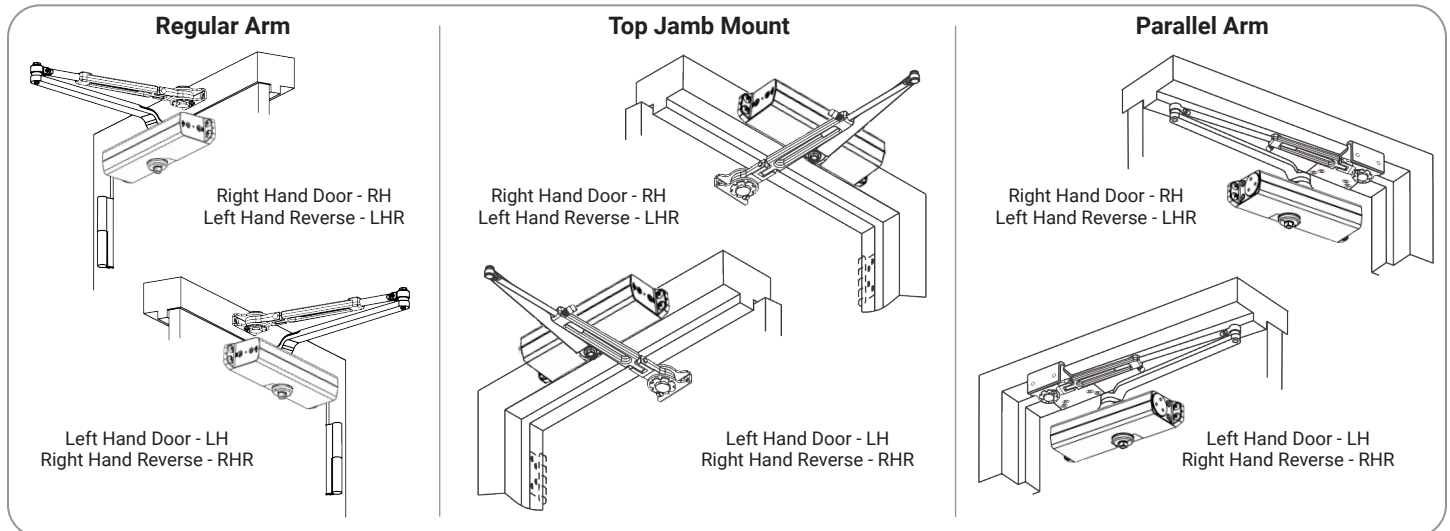
51 Series Door Closer

Model 151

Regular, Top Jamb, and Parallel Arms, Hold Open
Installation Instructions

ACCENTRA

ASSA ABLOY



⚠ WARNING

This product can expose you to lead which is known to the state of California to cause cancer and birth defects or other reproductive harm. For more information go to www.P65warnings.ca.gov.

⚠ WARNING

Attention Installer: Any retrofit or other field modification to a fire rated opening can potentially impact the fire rating of the opening, and ASSA ABLOY makes no representations or warranties concerning what such impact may be in any specific situation. When retrofitting any portion of an existing fire-rated opening, or specifying and installing a new fire-rated opening, please consult with a code specialist or local code official (Authority Having Jurisdiction) to ensure compliance with all applicable codes and ratings.

855-557-5078 x 2 • www.accentra-assaabloy.com

Copyright © 2019, 2023, 2024, ASSA ABLOY ACCENTRA™ Access and Egress Hardware Group, Inc. All rights reserved. Reproduction in whole or in part without the express written permission of ASSA ABLOY Access and Egress Hardware Group, Inc. is prohibited.

80-9350-3504-010 Rev 3 05/24

Experience a safer
and more open world


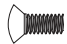
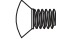


ATTENTION:

An incorrectly installed or improperly adjusted door closer can cause property damage or personal injury. These installation instructions should be followed to avoid the possibility of misapplication or misadjustment.

- For special applications, a separate door and frame preparation template is packed with these instructions. Use this instruction sheet for installation sequence and closer adjustments only.
- Doors should be hung on ball bearing or anti-friction hinges.

- A separate door stop is recommended.
- Always consult door/frame manufacturer for fastener compatibility.
- Door and frame must be properly reinforced.
- Adjust closing time speed between 3 and 7 seconds from 90° to 0°.
- These door closers should NOT be installed on exposed side (weather side) of exterior doors.
- Dimensions are given in inches (millimeters).

Supplied Hardware

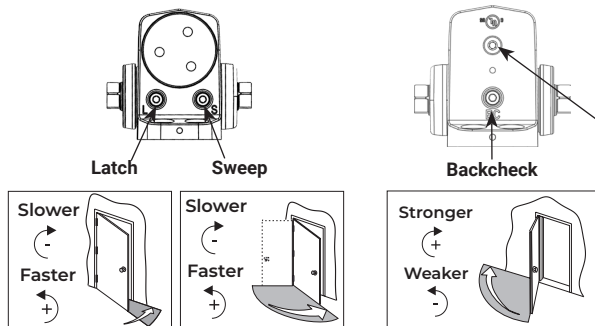
Mounting Hardware	Door or Frame	Drill
 Closer, Holder Shoe, Holder, PA Bracket: 1/4-14 x 1-1/2 Oval Flat Head Self Drilling. Screw	Wood/Metal	3/16" (4.8mm) for wood
 Closer, Holder Shoe, Holder, PA Bracket: 1/4-20 x 3/4 Oval Flat Head Mach. Screw	Metal	Drill #7 (.201 dia. or 5.1mm) Tap 1/4-20
 H/O Shoe to Holder, PA Bracket: 1/4-20 x 1/2 Oval Flat Head Mach. Screw	All	N/A
 Closer: Sleeve Nut and Bolt (SNB) (optional) with 1/4-20 x 3/4 Oval Flat Head Mach. Screw (recommended)	Hollow Metal	9/32" (7.0mm) thru 3/8" (9.5mm) door face opposite to closer
	Aluminum or Wood	3/8" (9.5mm) thru
 Closer: Thru Bolt and Grommet Nut (TBGN) (optional)	All	9/32" (7.0mm) thru 3/8" (9.5mm) dia. x 3/8" (9.5mm) deep, door face opposite to closer

Closer Adjustments




Use provided hex wrench to turn valves. **NEVER** force valves out of closer. **NEVER** completely close backcheck valve. Door must be open to adjust spring closing power. Refer to the chart.

Use of a power drill will void the Warranty.



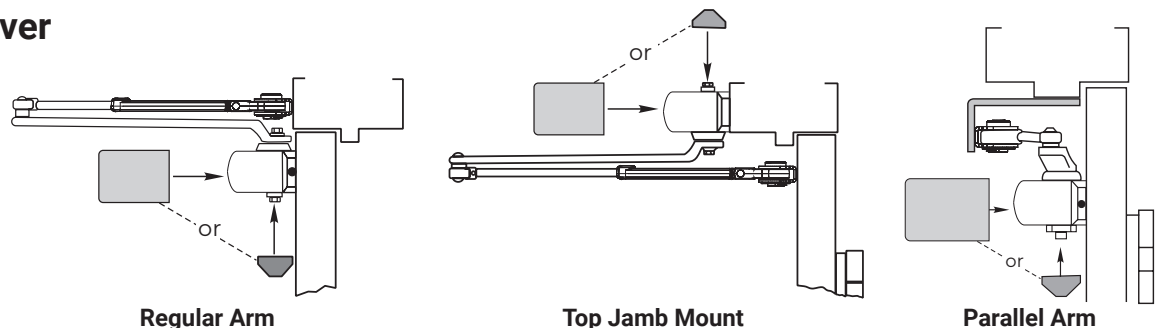
Spring Closing Power				Number of Turns Required				
	Door	Type of Installation	*	Maximum Door Size				
				34" (0.85M)	36" (0.90M)	40" (1.00M)	44" (1.10M)	48" (1.20M)
151	Interior	Regular Arm Top Jamb	Full 360° Turns	2	4	6	10	12
		Parallel Arm		3	5	8	11	14
	Exterior	Regular Arm Top Jamb		3	5	8	11	14
		Parallel Arm		5	8	11	16	19
*30 Full (360°) turns maximum available <div></div> = turns as shipped								

*30 Full (360°) turns maximum available  = turns as shipped

Pinion Cap or Cover



Do not over tighten cap or cover screws.



Experience a safer
and more open world

Model 151

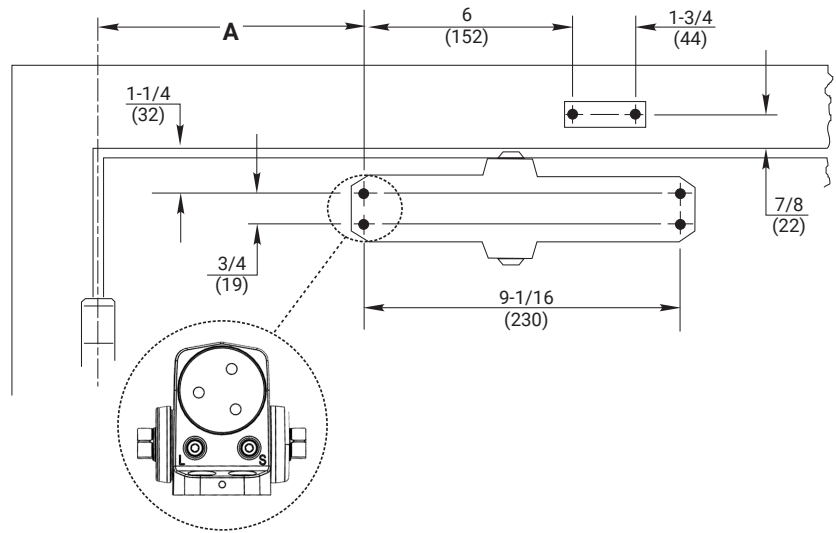
Regular, Top Jamb, and Parallel Arms, Hold Open

ACCENTRA
ASSA ABLOY

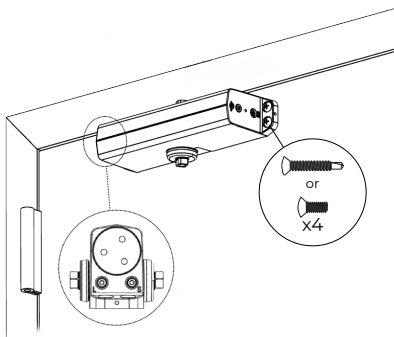
Regular Arm Installation (Right Hand Shown)

A. Prepare door and frame.

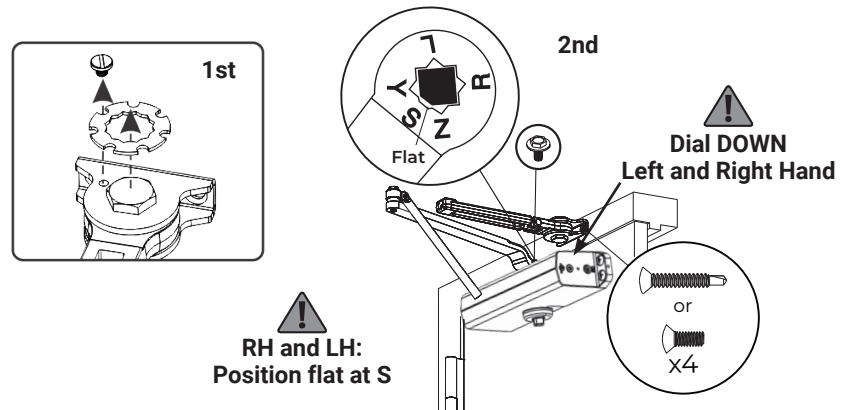
Opening	Dimension "A"
to 100°	7 (178)
101° to 120°	6 (152)
*121° to 180°	3-1/2 (89)
*Door/Wall/Hardware/Jamb conditions permitting	



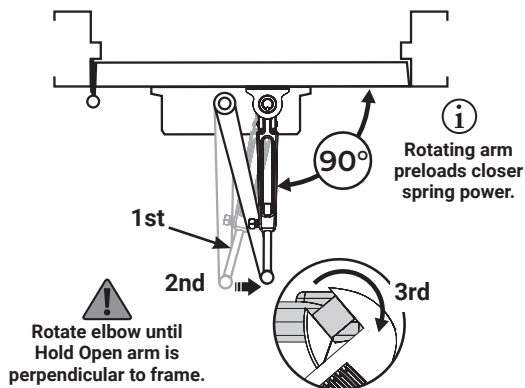
B. Mount closer to door.



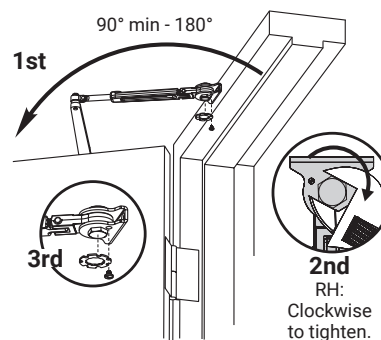
C. Remove dial from Hold Open arm and install separate arms.



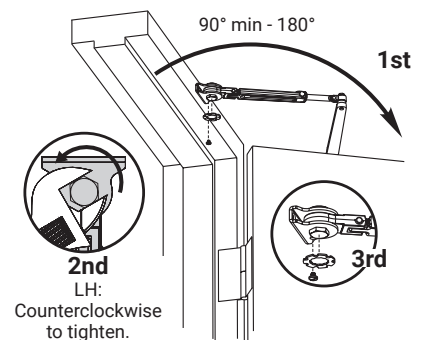
D. Connect arms, preload spring, and tighten set screw.



E. Set Hold Open.



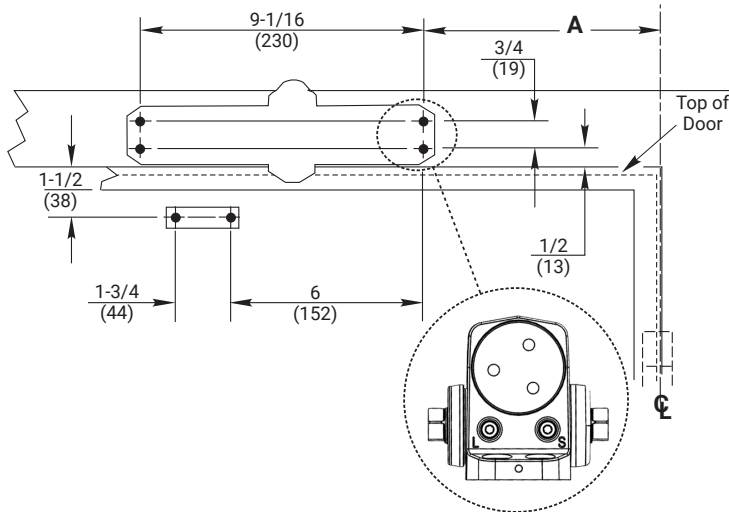
Keep door open in position until dial screw secures dial.



● Go to page 2 for closer adjustments and decorative cap or cover installation.

Top Jamb Arm Installation (Right Hand Shown)

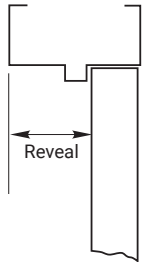
A. Prepare door and frame.



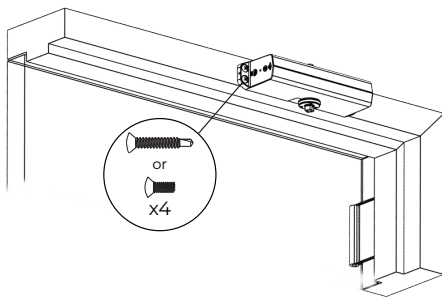
Opening	Dimension "A"
to 100°	7-1/2 (191)
101° to 120°	6 (152)
*121° to 180°	3-1/2 (89)

*Door/Wall/Hardware/Jamb conditions permitting

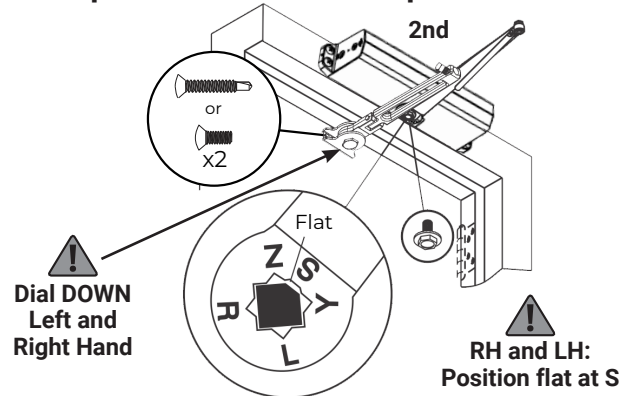
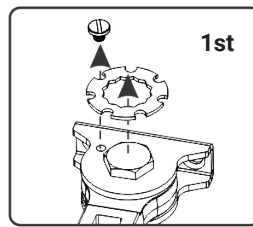
A longer connecting rod is required for reveals greater than 3" (76mm)



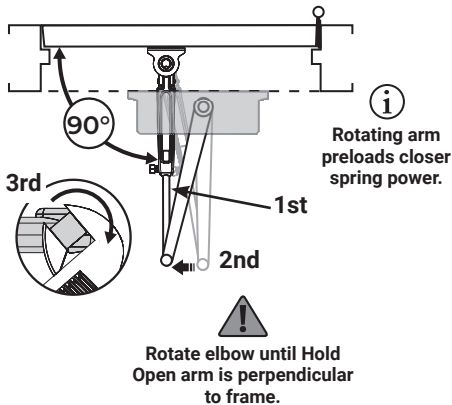
B. Mount closer to frame.



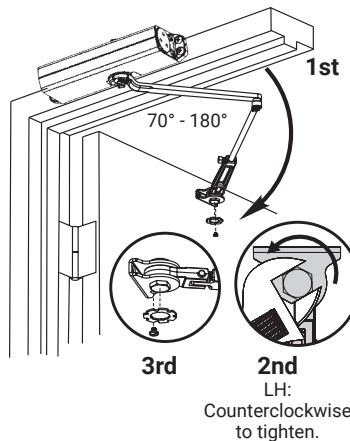
C. Remove dial from Hold Open arm and install separate arms.



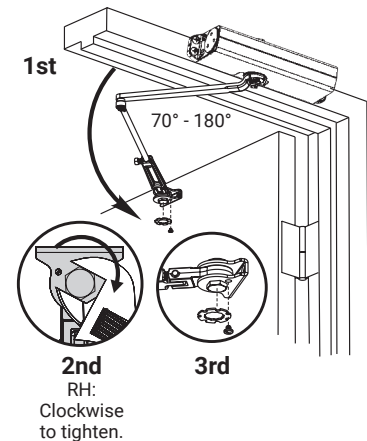
D. Connect arms, preload spring, and tighten set screw.



E. Set Hold Open.



Keep door open in position until dial screw secures dial.



Go to page 2 for closer adjustments and decorative cap or cover installation.

Model 151

Regular, Top Jamb, and Parallel Arms, Hold Open

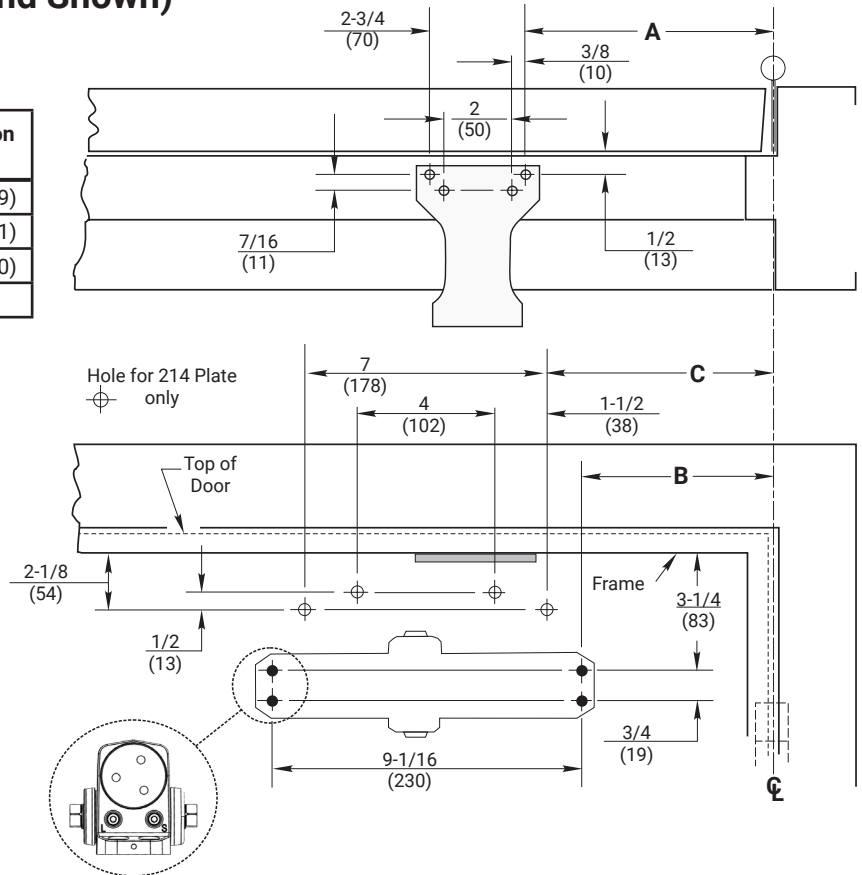
ACCENTRA
ASSA ABLOY

Parallel Arm Installation (Right Hand Shown)

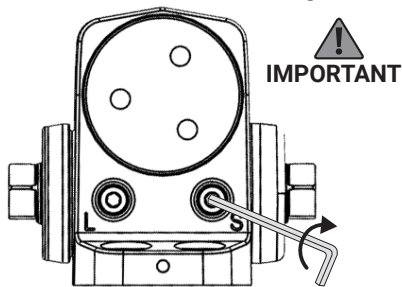
A. Prepare door and frame.

Door Opening	Dimension "A"	Dimension "B"	Dimension "C"
to 100°	9-1/4 (235)	7-5/8 (194)	8-5/8 (219)
101° to 130°	7-3/4 (197)	6-1/8 (156)	7-1/8 (181)
*131° to 180°	5-3/4 (146)	4-1/8 (105)	5-1/8 (130)

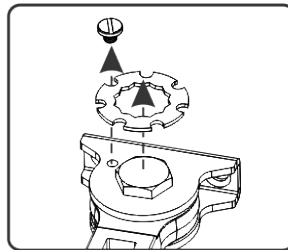
*Door/Wall/Hardware/Jamb conditions permitting



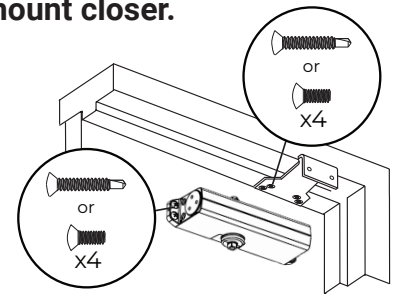
B. Close latch and sweep valves.



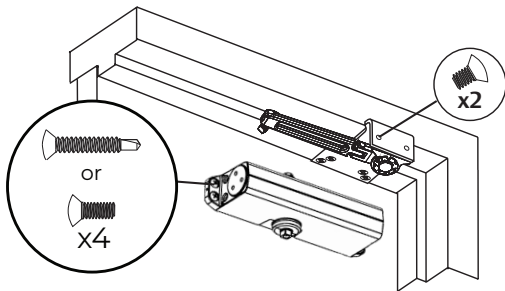
C. Remove dial from Hold Open arm.



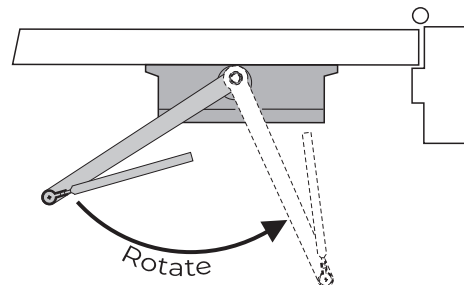
D. Install soffit plate and mount closer.



E. Install Hold Open arm to plate.

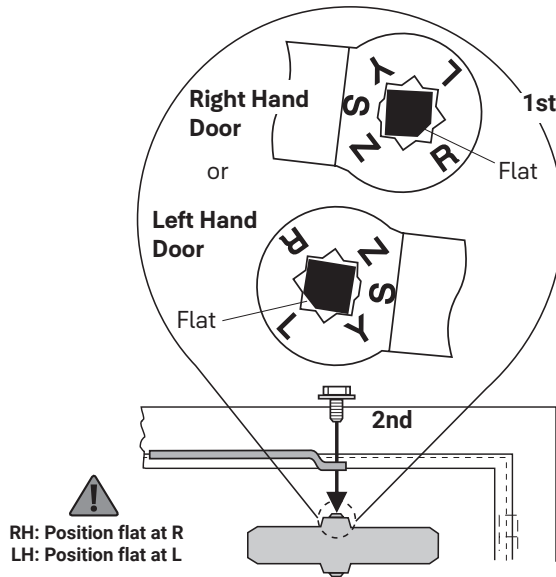


F. Place main arm on closer spindle and rotate.

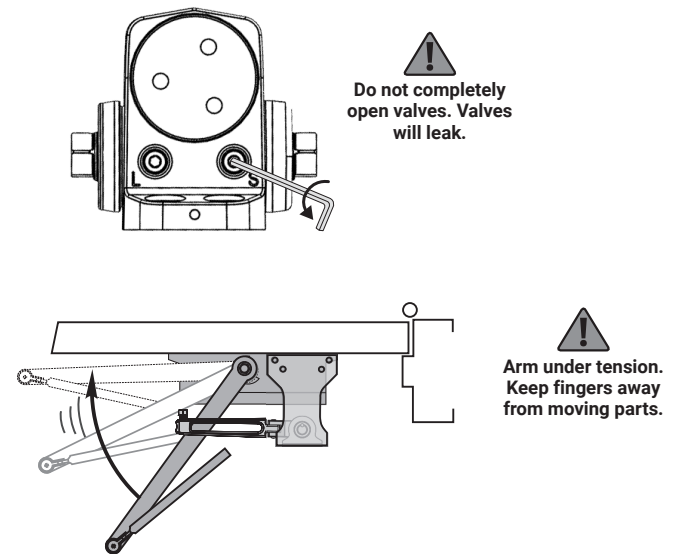


Parallel Arm Installation (Right Hand Shown) cont.

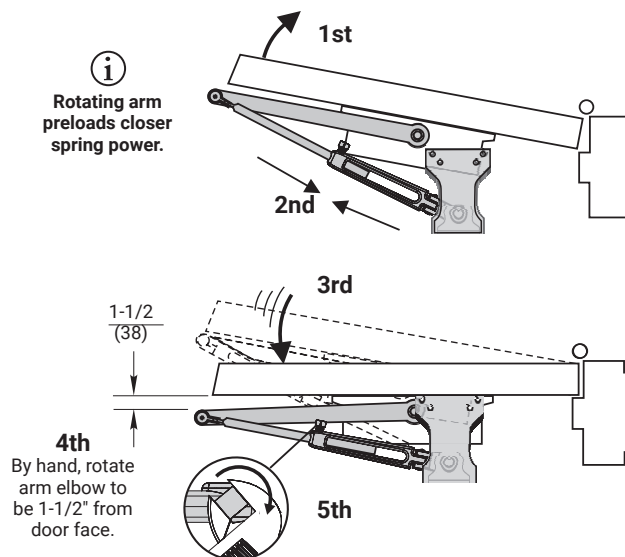
G. Remove arm and attach as shown.



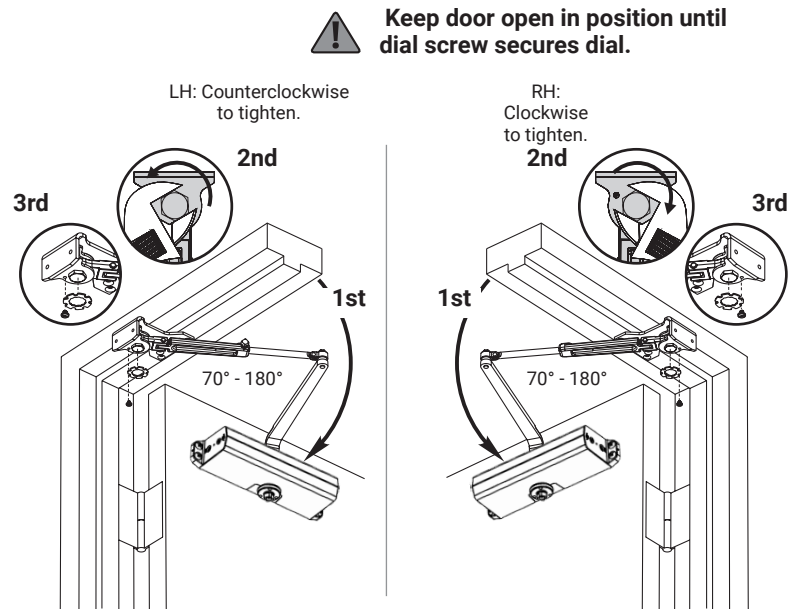
H. Open latch and sweep valves.



I. Connect arms, preload spring, and tighten set screw.



J. Set Hold Open.



● Go to page 2 for closer adjustments and decorative cap or cover installation.