

Double Cylinder Latchhead Assembly

Installation Instructions

ACCENTRA
ASSA ABLOY

For use with Mortise 7130 Series Double Cylinder Exit Device

1. Install Mortise lock and Outside Trim onto door using supplied Instructions.
2. Using slotted screwdriver in the slot of the "Mortise Double Cylinder Adapter" Thread into Mortise Lock until "Mortise Double Cylinder Adapter" bottoms out on opposing lock.
3. Un-thread "Mortise Double Cylinder Adapter" Counter Clockwise one full turn and orientate as shown in Figure 1.
4. Tighten Cylinder Locking Screw through Mortise Lock Front
5. Mount Exit Device using supplied instructions #80-9470-0030.
6. Assemble Cylinder, Cylinder Collar and Cylinder Housing to Exit Device Cover as shown in Figure 1. Rotate Cylinder Housing until it's mounting holes align with the mounting holes for the Cylinder and install the two Cylinder Housing Mounting Screws.
7. Install Exit Device Cover onto door over Exit Device being sure to align the Cylinder's tailpiece with the slot in the "Mortise Double Cylinder Adapter". Align the holes of the Exit Device Cover and install Device Cover Screws.
8. Test operation of both cylinders to be certain they function properly. Adjust as needed.

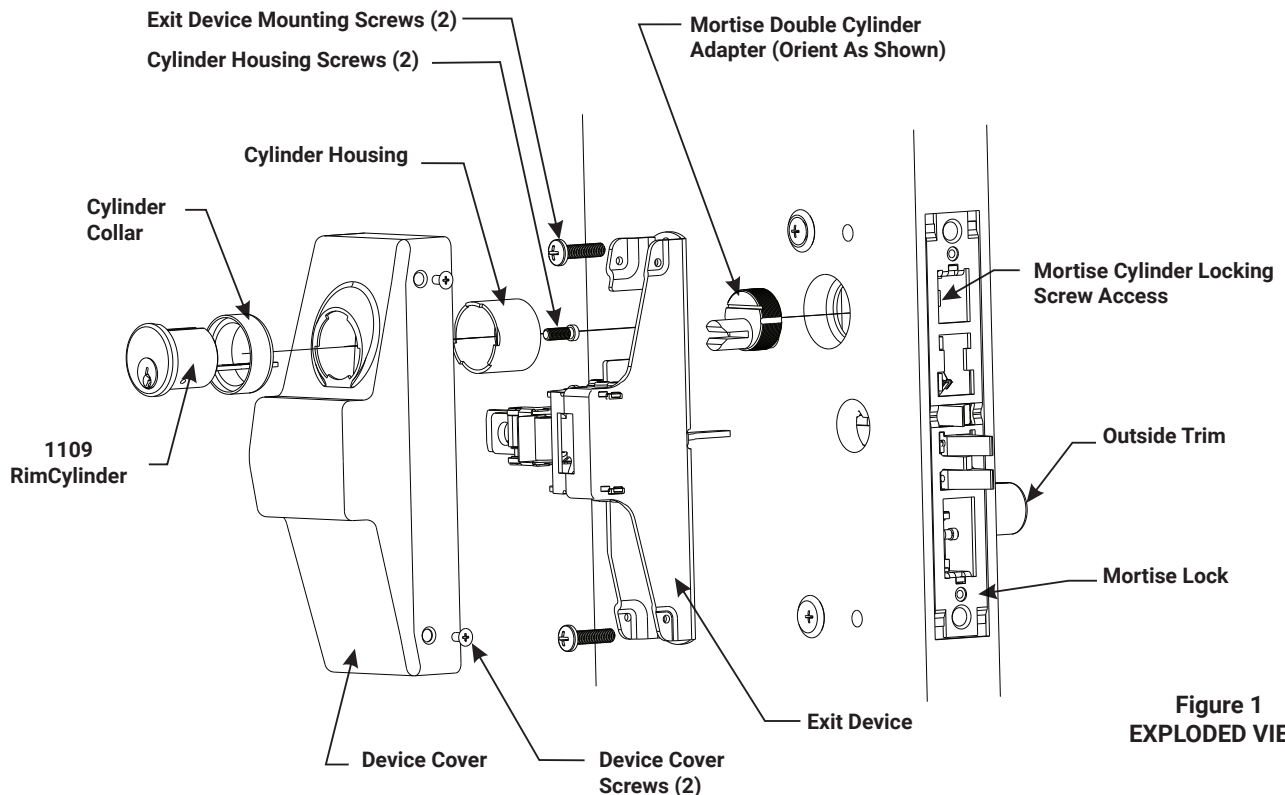


Figure 1
EXPLODED VIEW

WARNING

This product can expose you to lead which is known to the state of California to cause cancer and birth defects or other reproductive harm. For more information go to www.P65warnings.ca.gov.

WARNING

Attention Installer: Any retrofit or other field modification to a fire rated opening can potentially impact the fire rating of the opening, and ASSA ABLOY makes no representations or warranties concerning what such impact may be in any specific situation. When retrofitting any portion of an existing fire-rated opening, or specifying and installing a new fire-rated opening, please consult with a code specialist or local code official (Authority Having Jurisdiction) to ensure compliance with all applicable codes and ratings.

1-855-557-5078 Ext. 2 • www.accentra-assaabloy.com

Copyright © 2006, 2012, 2023, 2024, ASSA ABLOY Access and Egress Hardware Group, Inc. All rights reserved. Reproduction in whole or in part without the express written permission of ASSA ABLOY Access and Egress Hardware Group, Inc. is prohibited.

80-9500-0800-000 06/24

Experience a safer
and more open world