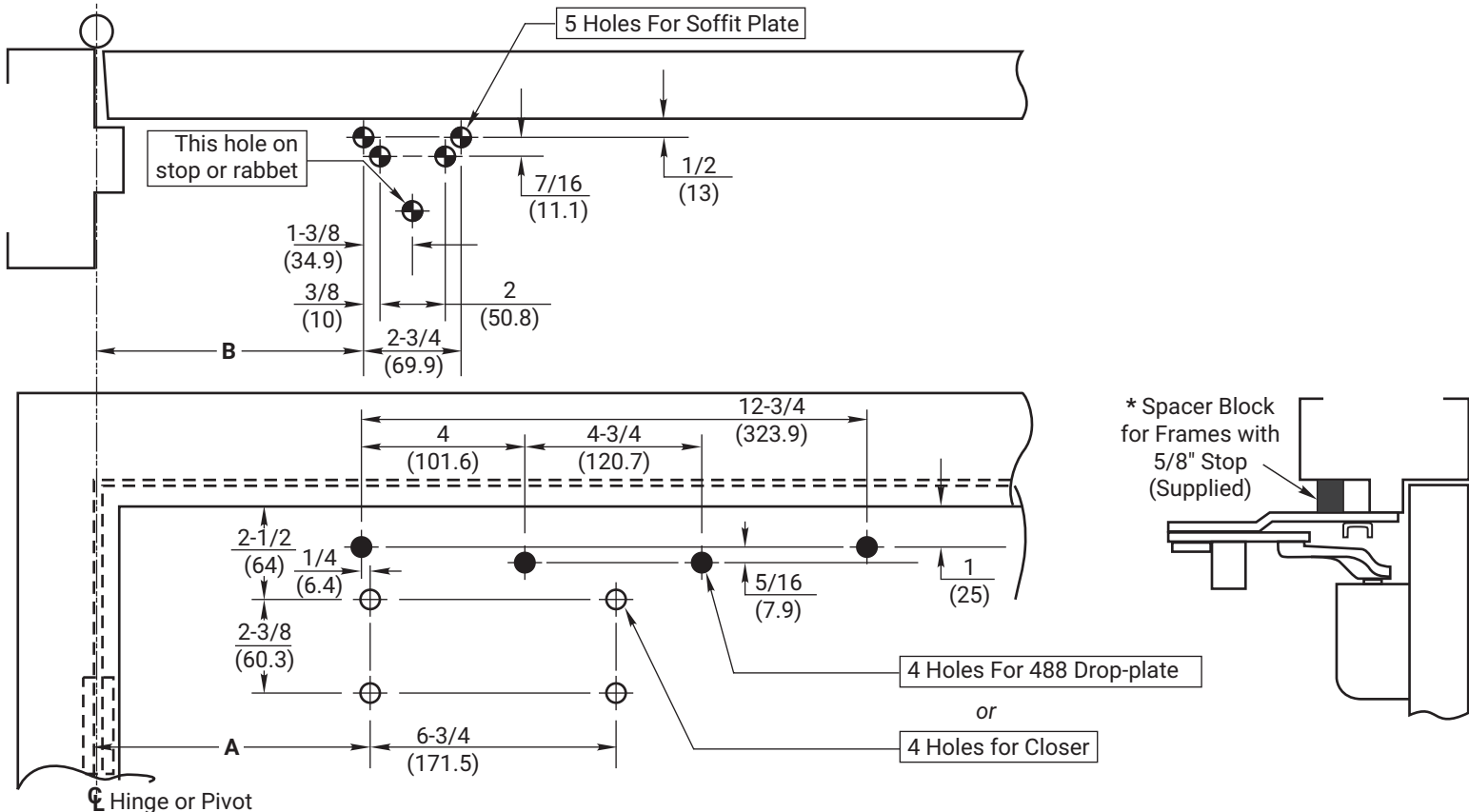


CAUTION: Door swing may be limited by door, frame, wall or hardware conditions

NOTES:

- Do not scale drawing.
- Left hand door shown.
- Dimensions are given in inches (mm).
- Hollow-metal doors require channel or box-type reinforcement when thru-bolt mount is specified.
- Minimum thickness recommended for reinforcements in hollow-metal doors and frames: .1046" (2.66mm) unless otherwise noted.
- **Doors will swing 2° beyond hold open point to dead stop position.**
- Model 4420T not permitted to be used on fire door.



Door Opening Angle		1-3/4 (44) Thick Door hung on 4-1/2 (114) wide template hinges or 3/4 (19) Offset Pivots	
Hold Open	Dead Stop	Dim. A	Dim. B
85°	90°	10-1/8 (257)	10-5/8 (270)
90°	95°	9-1/4 (235)	9-3/4 (248)
95°	100°	8-5/8 (219)	9-1/8 (232)
100°	105°	7-7/8 (200)	8-3/8 (213)
105°	110°	7-3/8 (187)	7-7/8 (200)
110°	115°	6-3/4 (171)	7-1/4 (184)

Preparation for Fasteners			
Fasteners	To Apply	Door or Frame	Drill Sizes
Sex nuts and bolts	Closer or drop-plate	Hollow-Metal	9/32" (7.00mm) through
		Aluminum or Wood	3/8" (9.50mm) door-face opposite to closer
#14 x 1/4" (32mm) type "A" S.M. screw	Soffit-plate	Wood	3/8" (9.50mm) through
		Aluminum	7/32" (5.5mm)
		Metal	drill: #7 (.201" dia.) tap: 1/4-20
1/4-20 machine screw	Optional	All	9/32" (7.00mm) through; 3/8" (9.50mm) dia. x 3/8" (10mm) deep, door face opposite to closer
Thru bolts and grommet nuts			

4400 Series Door Closer
Holder Stop Models 4420 or 4420T With or Without 488 Drop Plate

ACCENTRA
ASSA ABLOY

TEMPLATE NUMBER	REV	DATE
7344-0301	3	05/24