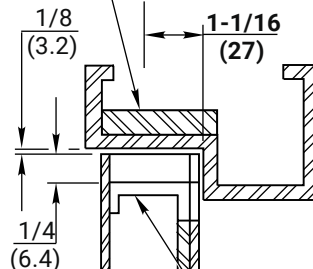


Inside Face of Door

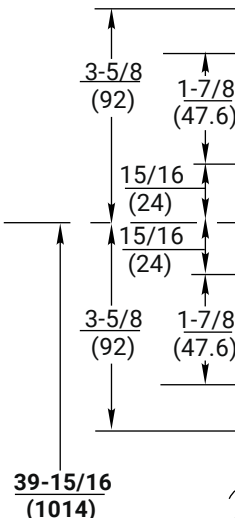
Section Thru Cutouts Center

Reinforcement for 791 Strike (See Note 6)

⌀ 791 Strike



Reinforcement By Door Mfr. (Typ.)

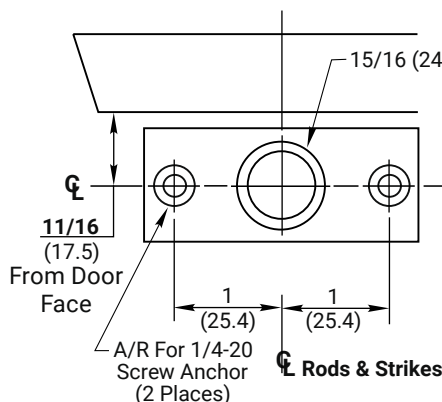
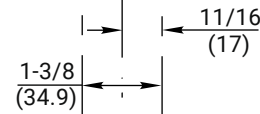


⌀ Vertical Reference (Rods, Strikes & Cutouts)

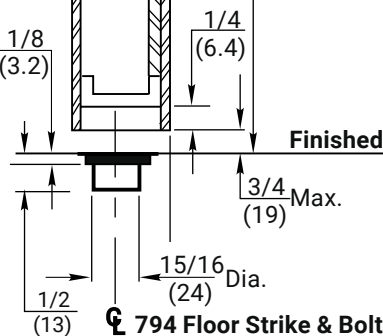
1/2 (12.70) Rad - Typ. (2 Slots-This face)

⌀ Horizontal Reference (Device Centerline)

1/4-20 (Std.) or See Note 9 (SNB) -4 Places-



794 STRIKE DETAIL



Finished Floor

Bottom of Door

NOTES:

1. Do not scale drawing.
2. Dimensions are in inches (mm).
3. LHR door shown. Preparation is typical for both door hands.
4. Minimum door stile width: 4-1/2 (114).
5. Prepare mounting holes when installing the device.
6. Unreinforced frames require blind rivet nuts (by others) to mount the strike.
7. This hole MUST be field located using physical part as template, after installation is complete and device is fully operational.
8. For recommended door reinforcements see template 7400-0000. Unreinforced doors require SNB option to mount the device components.
9. Holes for optional SNB: 9/32 (7.00) dia., inside door face; 3/8 (9.50) dia., outside door face.
10. Provide door stiffeners, as needed to prevent door collapse due to installation with power tools, door use, or abuse.
11. Device mount to hinge stile (not shown) requires hole location and preparation during device installation.
12. Bottom bolt should retract to 1/8 (3.2) above floor strike. Floor coverings in the door

RESPONSIBILITY
DOOR AND FRAME MANUFACTURERS ARE RESPONSIBLE FOR PROVIDING ADEQUATE CONSTRUCTION OR REINFORCEMENTS FOR PROPER INSTALLATION OF HARDWARE SHOWN. ALL ARCHITECTURAL BUILDERS HARDWARE MUST BE INSTALLED ON PROPERLY REINFORCED DOORS AND FRAMES, REGARDLESS OF TYPE, MATERIAL, OR METHOD OF CONSTRUCTION.

1520 and 1520F Concealed Vertical Rod Exit Devices x Exit Only (No Active Trim)

Application for Metal Door and Frame With x 794 Floor Strike Option

1-855-557-5078 Ext. 2

www.accentra-assaabloy.com

ACCENTRA
ASSA ABLOY

Experience a safer
and more open world

Copyright © 1999, 2024, ASSA ABLOY Access and Egress Hardware Group, Inc. All rights reserved. Reproduction in whole or in part without the express written permission of ASSA ABLOY Access and Egress Hardware Group, Inc. is prohibited.

SUPERSEDES	12/23	DO NOT SCALE DRAWING
TEMPLATE NUMBER	7415-0022	SHEET 1 of 1
		DATE 07/24