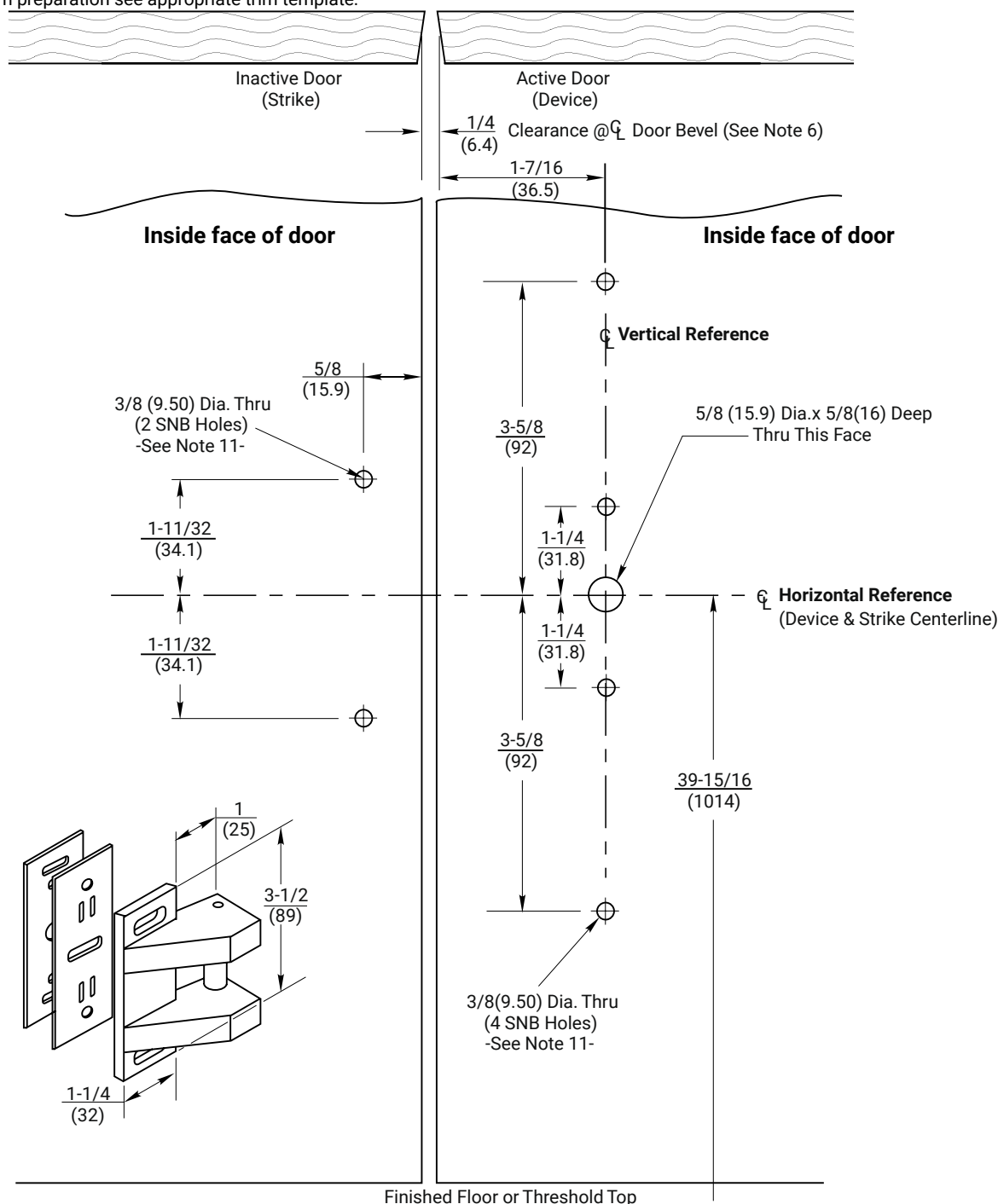


#### Notes:

- 1) Do not scale drawing.
- 2) Dimensions are in inches(mm).
- 3) LHR active pair shown. Preparation is typical for both hands.
- 4) Minimum door stile width: 3-1/2(89).
- 5) Prepare mounting holes when installing the device.
- 6) For square door edges, or other center clearance, compensate locating dimensions as required to maintain strike to device distance shown.
- 7) For trim preparation see appropriate trim template.
- 8) Provide adequate structural support to maintain door integrity after device installation with power tools, door use, or abuse.
- 9) Device mount to hinge stile (not shown) requires holes location and preparation during device installation. Door structural requirements are similar for both door stiles.
- 10) For electrical devices (suffixes "-B","-G","-O","-P","-S") also see template 7477-0001.
- 11) Wood screws (by others) permitted for solid core wood doors if pilot holes are used for installation.

Device: #14 x 1-1/2"; Strike: #10 x 1-1/2".



**RESPONSIBILITY**  
DOOR AND FRAME MANUFACTURERS ARE RESPONSIBLE FOR PROVIDING ADEQUATE CONSTRUCTION OR REINFORCEMENTS FOR PROPER INSTALLATION OF HARDWARE SHOWN. ALL ARCHITECTURAL BUILDERS HARDWARE MUST BE INSTALLED ON PROPERLY REINFORCED DOORS AND FRAMES, REGARDLESS OF TYPE, MATERIAL, OR METHOD OF CONSTRUCTION.

**7200M & 7205M Rim Panic Devices For Narrow Escutcheon Trim with Optional 793 Strike and SNB Application to Pair of Wood or Composite Doors without Mullion (Not for Fire Labeled Devices)**  
1-855-557-5078 Ext. 2  
[www.accentra-assaabloy.com](http://www.accentra-assaabloy.com)

**ACCENTRA**  
**ASSA ABLOY**

Experience a safer  
and more open world

Copyright ©2024, ASSA ABLOY ACCENTRA™ Access and Egress Hardware Group, Inc. All rights reserved. Reproduction in whole or in part without the express written permission of ASSA ABLOY Access and Egress Hardware Group, Inc. is prohibited.

SUPERSEDES	7473-1793 02/24	DO NOT SCALE DRAWING	
TEMPLATE NUMBER	7473-1793	SHEET	1 of 1
		DATE	04-24