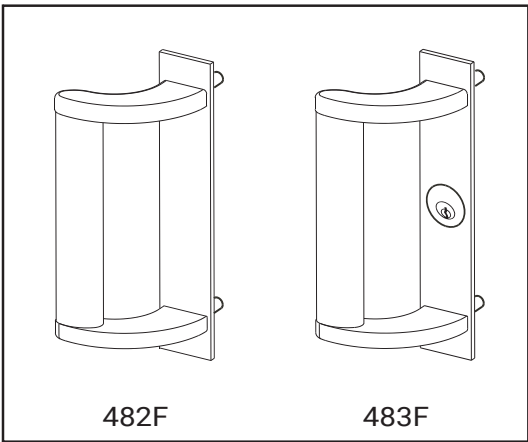
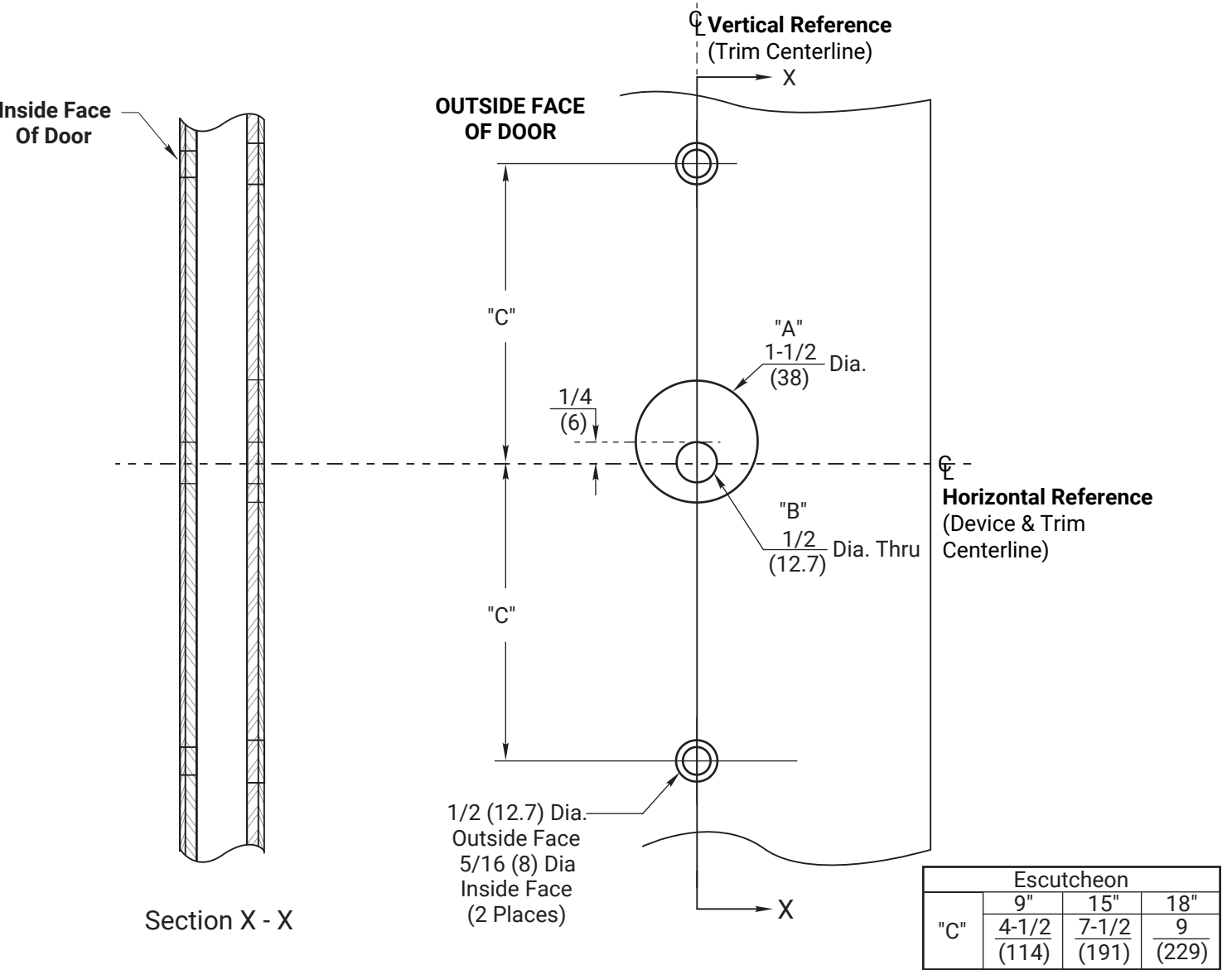


Notes:

- 1. This template is an addition to the device template. Locate centerlines using horizontal and vertical references on device template.
- 2. Do not scale drawing
- 3. Dimensions are in inches (mm).
- 4. LHR door shown. Preparation is typical for both door hands.
- 5. Provide adequate structural support to maintain door integrity during operation.
- 6. Prepare mounting holes when installing the trim.
- 7. Dimensions given about a centerline are symmetrical.
- 8. For 483F use "A" and "B" holes. For 482F DO NOT use.



Note: Lever and knob prefix does not affect door prep



**RESPONSIBILITY**  
DOOR AND FRAME MANUFACTURERS ARE RESPONSIBLE FOR PROVIDING ADEQUATE CONSTRUCTION OR REINFORCEMENTS FOR PROPER INSTALLATION OF HARDWARE SHOWN. ALL ARCHITECTURAL BUILDERS HARDWARE MUST BE INSTALLED ON PROPERLY REINFORCED DOORS AND FRAMES, REGARDLESS OF TYPE, MATERIAL, OR METHOD OF CONSTRUCTION.

482F & 483F Trim  
9", 15", and 18" Escutcheon, Metal Door Preparation  
For use with 6200 & 7200(F)  
Series Rim and Vertical Rod Exit Devices  
1-855-557-5078 Ext. 2  
www.accentra-assaabloy.com

**ACCENTRA**  
**ASSA ABLOY**

Experience a safer  
and more open world

Copyright ©2024, ASSA ABLOY Access and Egress Hardware Group, Inc. All rights reserved. Reproduction in whole or in part without the express written permission of ASSA ABLOY Access and Egress Hardware Group, Inc. is prohibited.

SUPERSEDES	7400-0482	DO NOT SCALE DRAWING	
TEMPLATE NUMBER	7400-0482	SHEET	DATE
		1 of 1	06-24