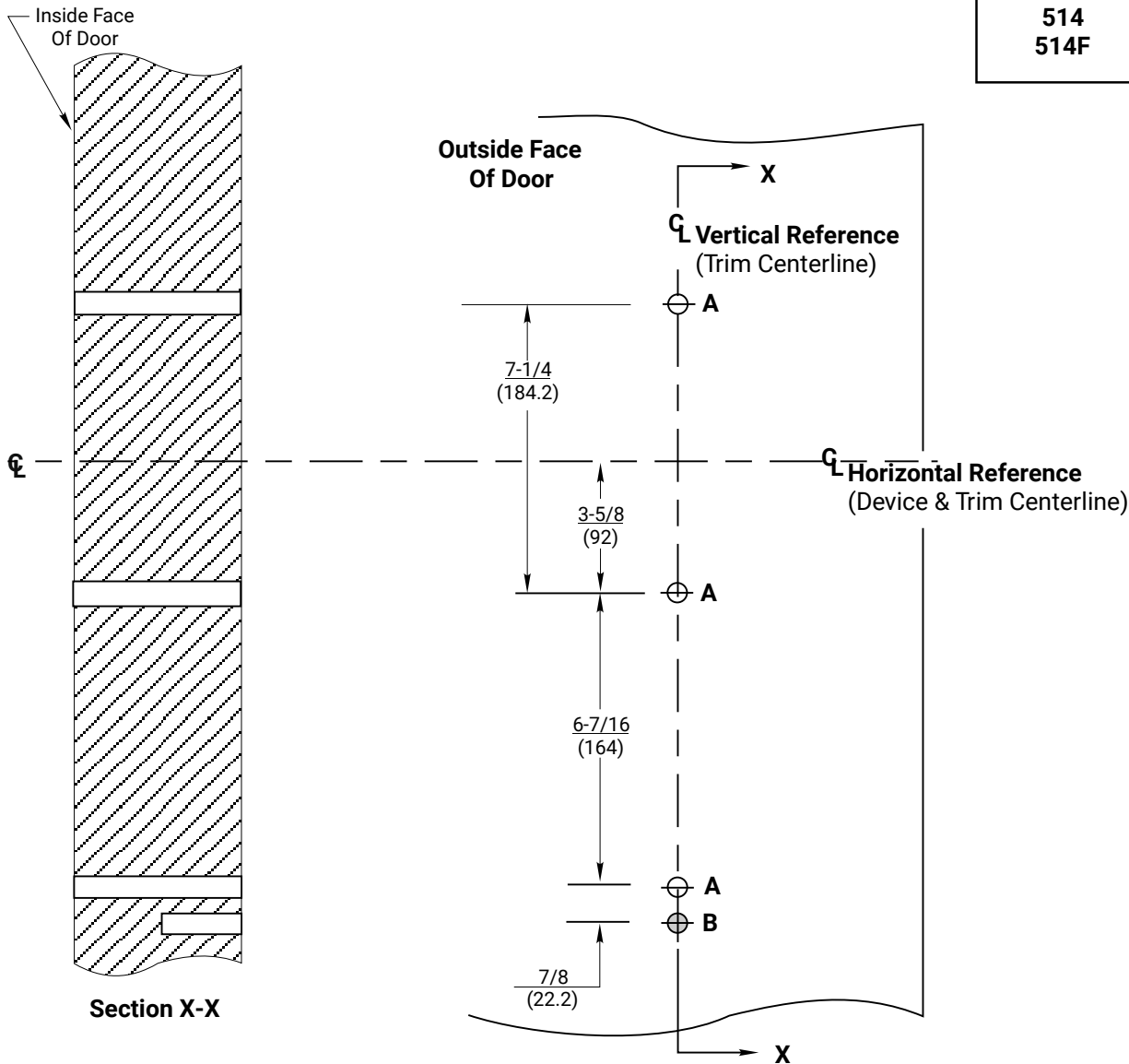
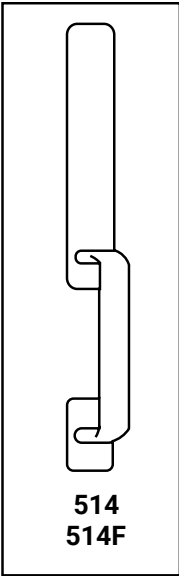


NOTES:

- 1. This template is an addition to the device template. Locate centerlines using horizontal and vertical references on device template.
- 2. Do not scale drawing.
- 3. Dimensions are in inches (mm).
- 4. LHR door shown. Preparation is typical for both door hands.
- 5. Prepare mounting holes when installing trim.
- 6. Provide adequate structural support to maintain door integrity during operation

Hole	Specification
A	1/2(12.50) Dia. Thru Door
B	3/8(9.50) Dia. X 3/4(19) Deep



RESPONSIBILITY
DOOR AND FRAME MANUFACTURERS ARE RESPONSIBLE FOR PROVIDING ADEQUATE CONSTRUCTION OR REINFORCEMENTS FOR PROPER INSTALLATION OF HARDWARE SHOWN. ALL ARCHITECTURAL BUILDERS HARDWARE MUST BE INSTALLED ON PROPERLY REINFORCED DOORS AND FRAMES, REGARDLESS OF TYPE, MATERIAL, OR METHOD OF CONSTRUCTION.

514(F) Narrow Escutcheon Trim
With 7200(M) or 7200(MF) Series
Rim and Vertical Rod Exit Devices
1-855-557-5078 Ext. 2
www.accentra-assaabloy.com

ACCENTRA
ASSA ABLOY

Experience a safer
and more open world

Copyright © 1999, 2023, 2024, ASSA ABLOY Access and Egress Hardware Group, Inc. All rights reserved. Reproduction in whole or in part without the express written permission of ASSA ABLOY Access and Egress Hardware Group, Inc. is prohibited.

SUPERSEDES	12/23	DO NOT SCALE DRAWING
TEMPLATE NUMBER	7400-1514	SHEET 1 of 1 DATE 07/24