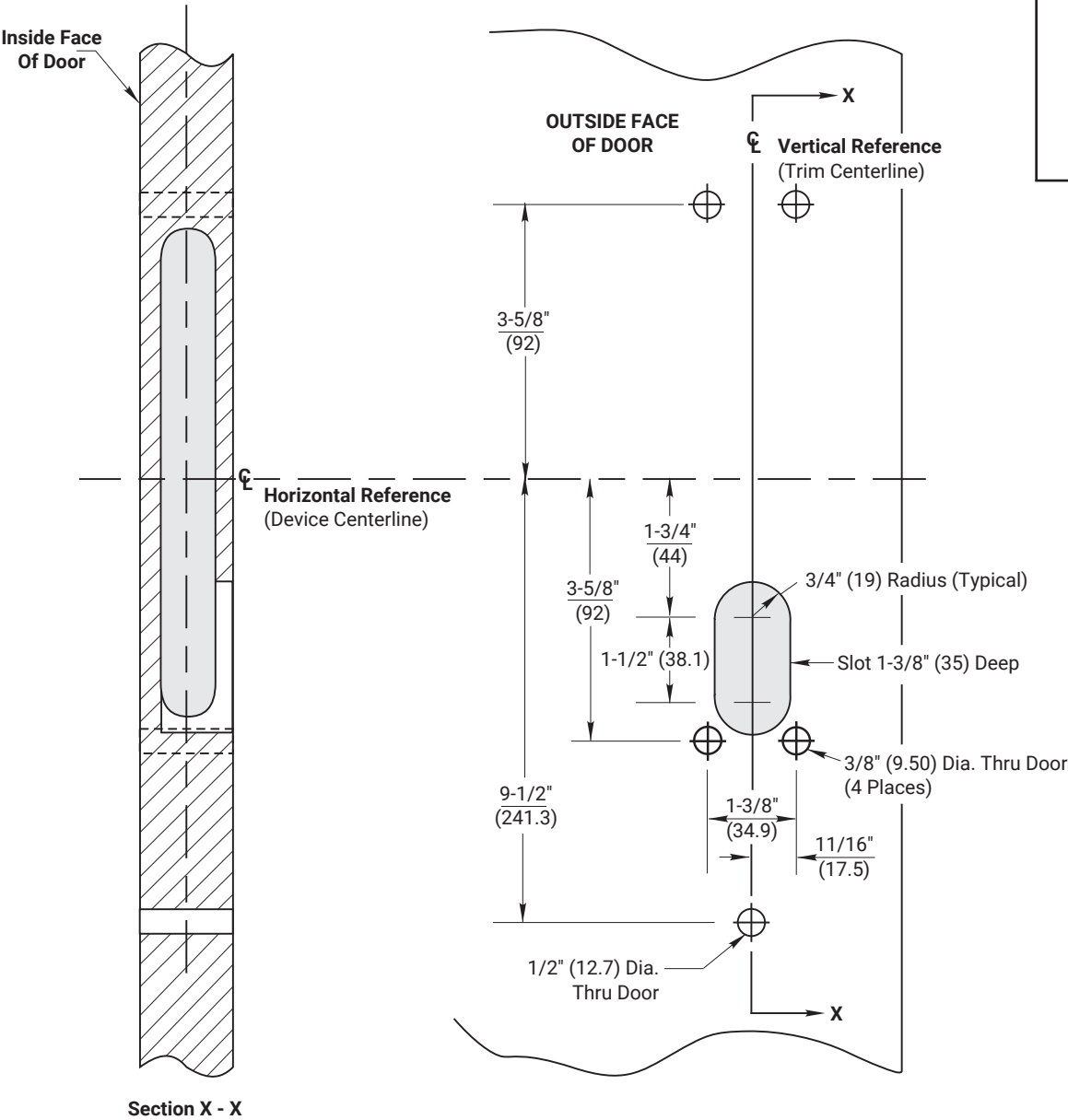
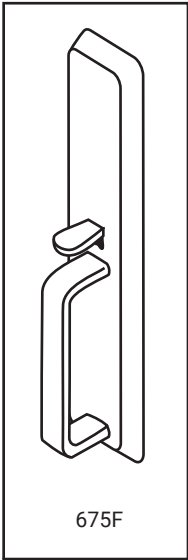


NOTES:

- 1. This template is an addition to the device template. Locate centerlines using horizontal and vertical references on device template.
- 2. Do not scale drawing.
- 3. Dimensions are in inches (mm).
- 4. LHR door shown. Preparation is typical for both door hands.
- 5. Shaded area represents mortise lock cavity from device template.
- 6. Provide adequate structural support to maintain door integrity during operation.



**RESPONSIBILITY**  
DOOR AND FRAME MANUFACTURERS ARE RESPONSIBLE FOR PROVIDING ADEQUATE CONSTRUCTION OR REINFORCEMENTS FOR PROPER INSTALLATION OF HARDWARE SHOWN. ALL ARCHITECTURAL BUILDERS HARDWARE MUST BE INSTALLED ON PROPERLY REINFORCED DOORS AND FRAMES, REGARDLESS OF TYPE, MATERIAL, OR METHOD OF CONSTRUCTION.

**675F Trim Application**  
With 1530(F), 6130(F), or 7130(F) Series Mortise Exit Devices  
Wood or Composite Door Preparation  
1-855-557-5078 Ext. 2  
[www.accentra-assaabloy.com](http://www.accentra-assaabloy.com)

**ACCENTRA**  
**ASSA ABLOY**

Experience a safer  
and more open world

Copyright © 2006, 2015, 2024, ASSA ABLOY Access and Egress Hardware Group, Inc. All rights reserved. Reproduction in whole or in part without the express written permission of ASSA ABLOY Access and Egress Hardware Group, Inc. is prohibited.

SUPERSEDES 7400-1675 (01/24)	DO NOT SCALE DRAWING	
TEMPLATE NUMBER 7400-1675	SHEET 1 of 1	DATE 05/24