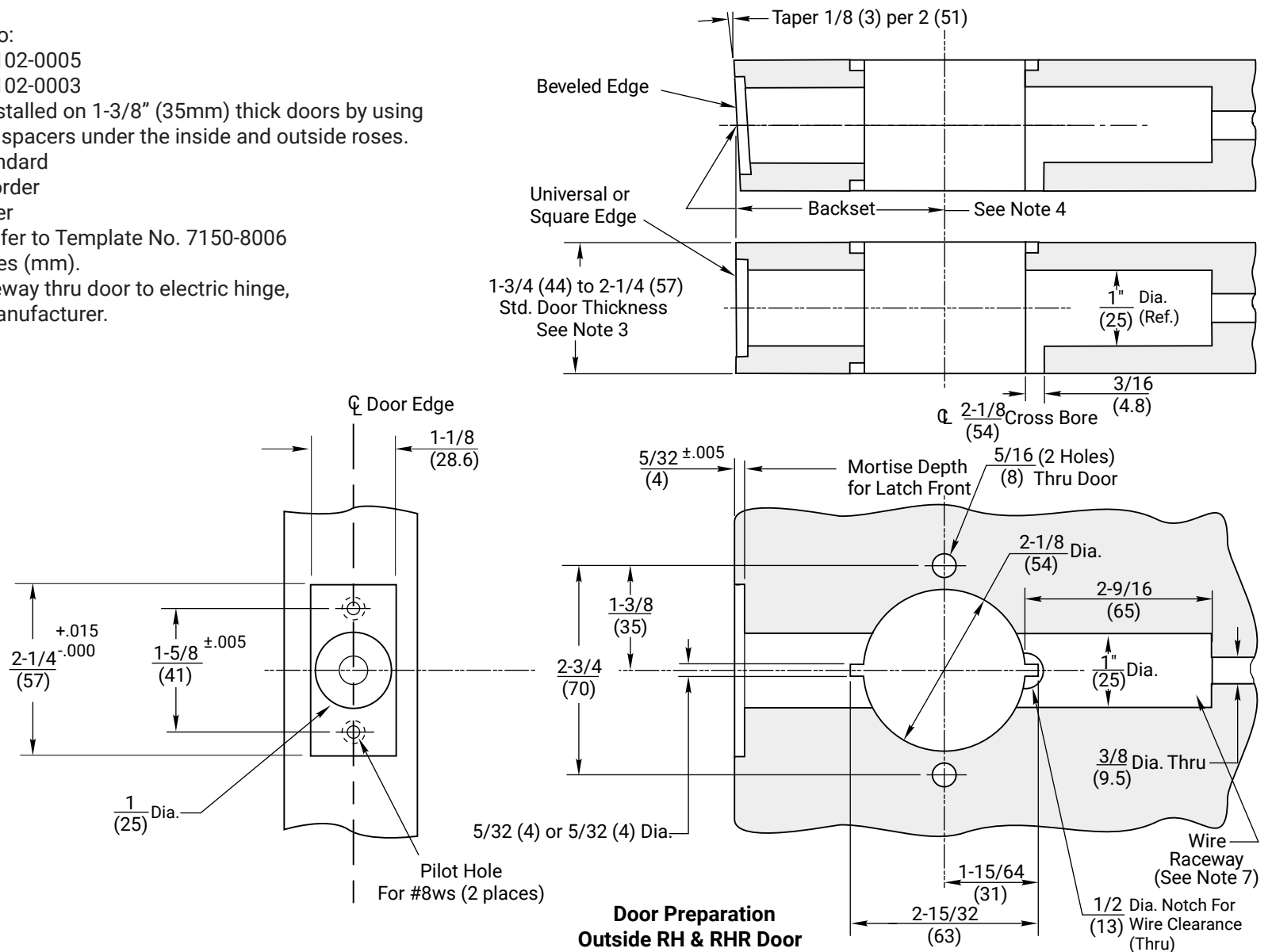


Notes:

1. Do not scale drawing
2. For strike preparation refer to:
495 Strike - Template No. 7102-0005
497 Strike - Template No. 7102-0003
3. The 5400LN locks can be installed on 1-3/8" (35mm) thick doors by using two (2) #14-5401-6644-200 spacers under the inside and outside roses.
4. Backset: 2-3/4" (70mm) standard
3-3/4" (95mm) to order
5" (127mm) to order
5. For H.M. door preparation refer to Template No. 7150-8006
6. All dimensions given in inches (mm).
7. 3/8" (9.5mm) minimum raceway thru door to electric hinge, location optional by door manufacturer.



Experience a safer
and more open world

Copyright © 2006, 2023, 2024, ASSA ABLOY Access and Egress Hardware Group, Inc. All rights reserved. Reproduction in whole or in part without the express written permission of ASSA ABLOY Access and Egress Hardware Group, Inc. is prohibited.

**5480LN & 5490LN Series Solenoid Controlled
Cylindrical Locks Wood Door Preparation**
2-3/4" (70mm) and Optional Backsets
1-855-557-5078 Ext. 2 www.accentra-assaabloy.com

Template Number:
7150-8007
Date: 05/24
Sheet: 1 of 1

ACCENTRA
ASSA ABLOY