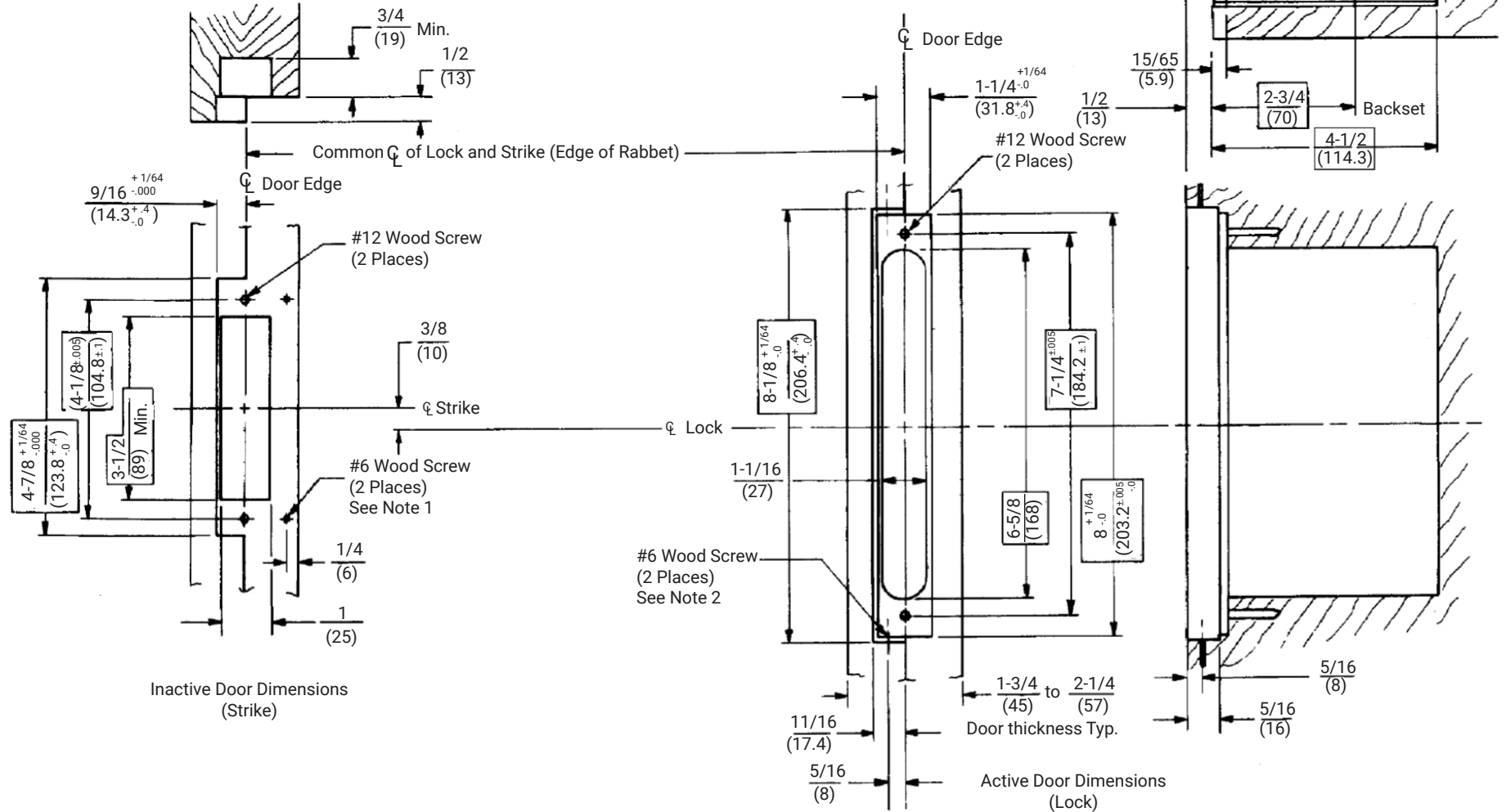


DO NOT SCALE

Notes:

1. These holes are field drilled on 2-1/4" (57mm) thick doors only.
2. These holes are field drilled.
3. Tolerances shown are for cutouts. All dimensions given about center-lines must be central within tolerance unless otherwise specified.
4. Dimensions given in inches (mm).



Experience a safer
and more open world

Copyright © 2023, 2024, ASSA ABLOY ACCENTRA™ Access and Egress Hardware Group, Inc. All rights reserved. Reproduction in whole or in part without the express written permission of ASSA ABLOY Access and Egress Hardware Group, Inc. is prohibited.

8600, 8700, & 8800 Series Mortise Locks Pair of Rabbeted Wood Doors Lock and Strike Preparation

1-855-557-5078, Ext. 2 www.accentra-assaabloy.com

Template Number:
7086-0004

Date: 04/24

Sheet: 1 of 1

ACCENTRA
ASSA ABLOY