

# TEMPLATE T-HS95\_STD\_HD1

Effective date: May 1, 2024

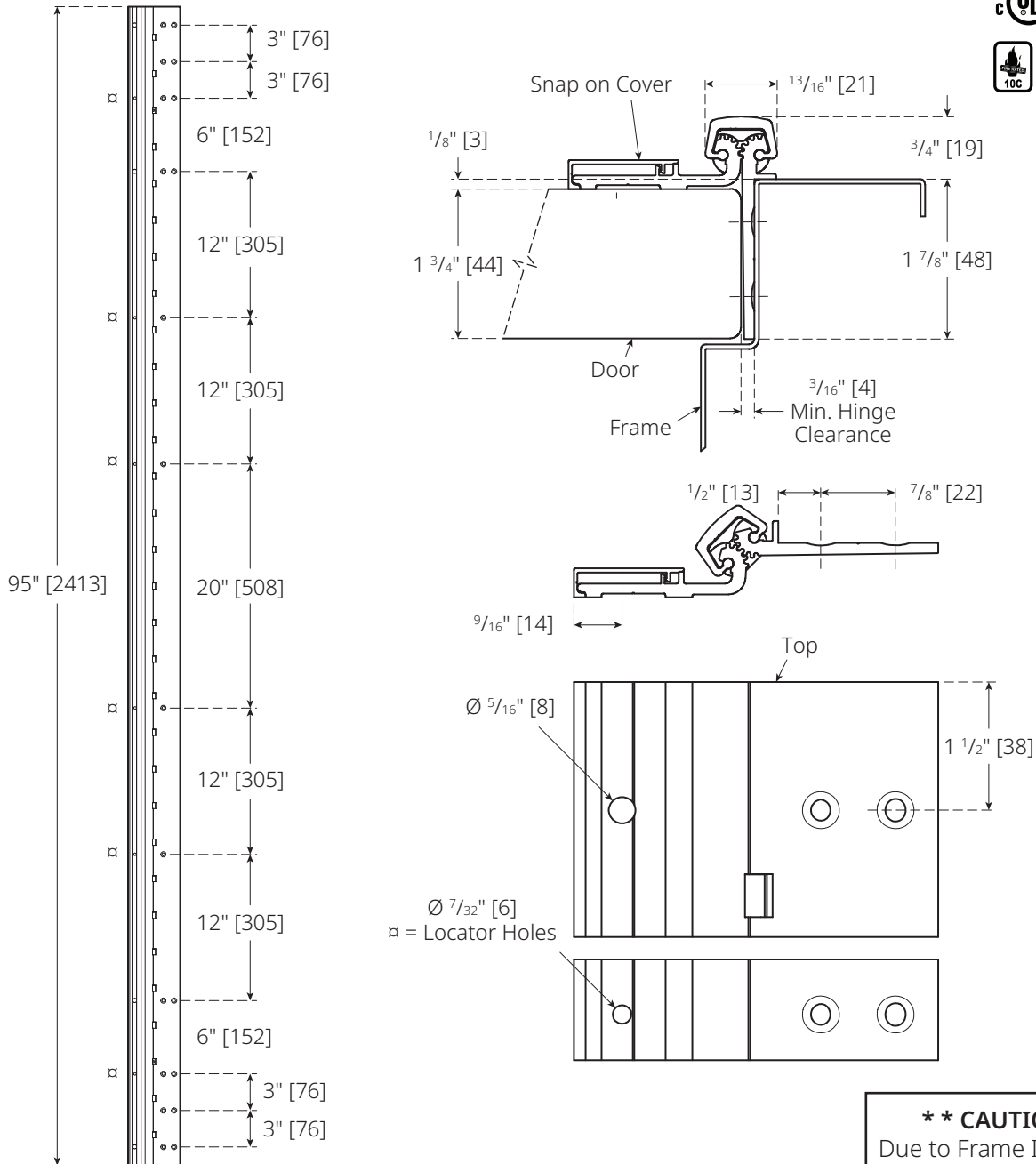
Supersedes: All Previous



Experience a safer  
and more open world

**NOT TO SCALE**

## PEMKO 95" HALF SURFACE STD & HD1 HINGE



**\*\* CAUTION \*\***  
Due to Frame Installation  
Variations, Pre-drilling  
for Fasteners  
IS NOT Recommended

Additional clearance needed for bevelled edge hinge side of door.

Pemko  
5535 Distribution Dr.  
Memphis, TN 38141  
www.pemko.com  
800 824 3018

4226 Transport St,  
Ventura, CA 93003  
800 283 9988

NOTE: Pemko reserves the right to make product changes and is not responsible for obsolete template errors. To ensure your template is current please visit our website at [www.pemko.com](http://www.pemko.com) or call us at 800 824 3018

Copyright © 2018-2024, ASSA ABLOY Accessories and Door Controls Group, Inc. All rights reserved. Reproduction in whole or in part without the express written permission of ASSA ABLOY Accessories and Door Controls Group, Inc. is prohibited. Printed in the U.S.A T - 295 - HS95\_STD\_HD1 6/24