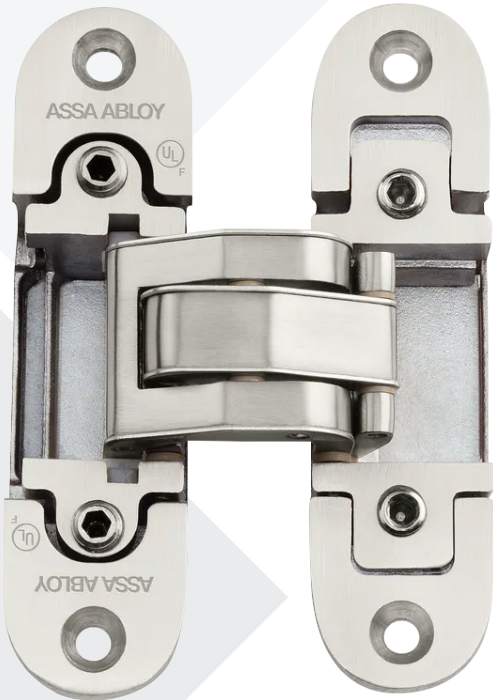


# McKinney MK80SS

## Concealed Hinges Series



### SPECIFICATIONS:

**MATERIAL:**  
Stainless Steel

**OVERVIEW:**  
Refined and minimal, the McKinney Concealed Hinges feature 3-Dimension adjustability for easy installation and door alteration.

- OPTIONS:**
- Overall hinge length: 111.5mm (4.39")
  - Hinge width: 29mm (1.14")
  - Non-handed
  - Opening angle: 180 degrees
  - 3-Dimensional adjustability:
    - Vertical +/- 2 mm
    - Horizontal +/- 2 mm
    - Depth +/- 1 mm
  - For wood or hollow metal doors with wood or metal frames
  - UL Listed for both hollow metal or steel covered composite fire doors rated up to 3 hours
  - UL Listed for wood core fire doors rated 90 minutes

### AVAILABLE FINISHES:

- Stainless Steel (PN# MK67016)

**Hinge Capacity** - Door thickness minimum: 1 3/8"

Number of Hinges	Door Width			
	32"	36"	42"	48"
2	185 lbs	176 lbs	143 lbs	132 lbs
3	211 lbs	198 lbs	160 lbs	149 lbs
4	233 lbs	220 lbs	171 lbs	158 lbs

The ASSA ABLOY Group is the global leader in access solutions. Every day we help people feel safe, secure and experience a more open world.

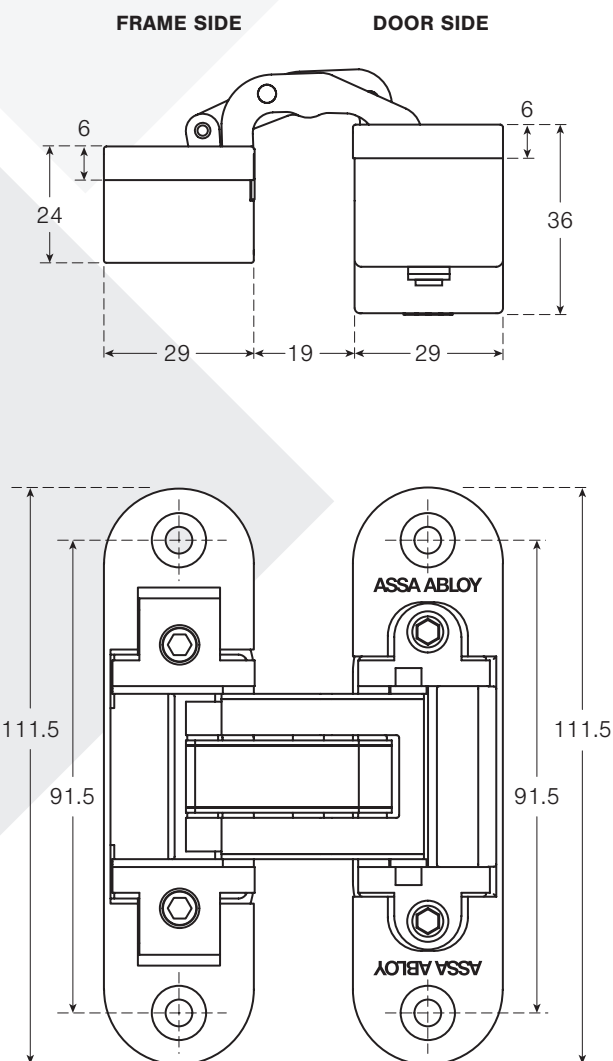
**McKinney®**

**ASSA ABLOY**

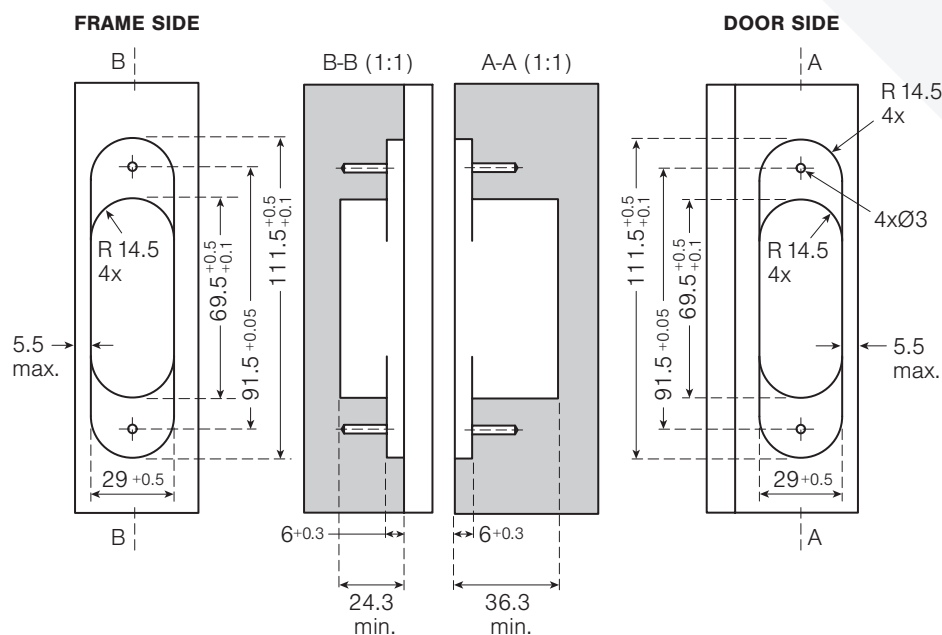
Experience a safer  
and more open world

## NOT TO SCALE

### Hinge Dimensions (millimeters)



### Milling Dimensions (millimeters)



### Adjustment

