



**PEMKO**  
ANTI-BARRICADE  
RESCUE HARDWARE

**PEMKO**  
**ASSA ABLOY**

Experience a safer  
and more open world

# Anti-Barricade Rescue Hardware

---

Pemko designs and manufactures products to improve safety and mitigate risk in medical, healthcare, and assisted living environments. Applications include patient rooms, patient bathrooms and cross corridor bathrooms.

Anti-barricade rescue hardware is the optimum solution to provide a safe way to rescue someone in the event the door is barricaded and not able to open. In an emergency the facility staff will be able to swing the door in the opposite direction, minimizing the risk of patients harming themselves.

## *Solutions*



*Double Swing Pin & Barrel Hinge DSH1000*



*Emergency Release Stop ERSBH*



*Multi-Point  
Emergency Release  
Stop ERSMP*

## Applications



MEDICAL FACILITIES



BEHAVIORAL HEALTH FACILITIES



ASSISTED LIVING FACILITIES

## Standards

ANSI/BHMA: A156.26 Grade 1-300 Certified (DSH1000)

ADA Compliance:

- ICC/ANSI A117.1-2009

- Barrier Free Requirements (DSH1000)

- ADAAG-2010

Refer to the New York State Office of Mental Health (OMH) Patient Safety Standards for current product compliance.

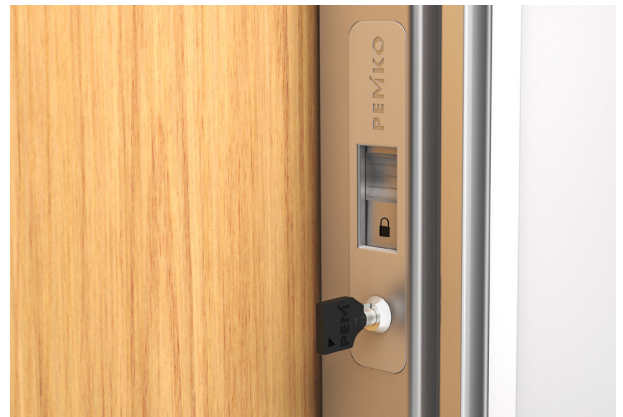




# Rescue Hardware Operation



1. Door barricaded by a person or object that prevents the door from opening



2. A key is used to unlock the Emergency Release Stop from the locked position

# Rescue Hardware Operation



- 3.** Emergency Release Stop opens to allow the door to swing in the opposite direction



- 4.** Door opens outward in the opposite direction to allow quick and easy access to the patient



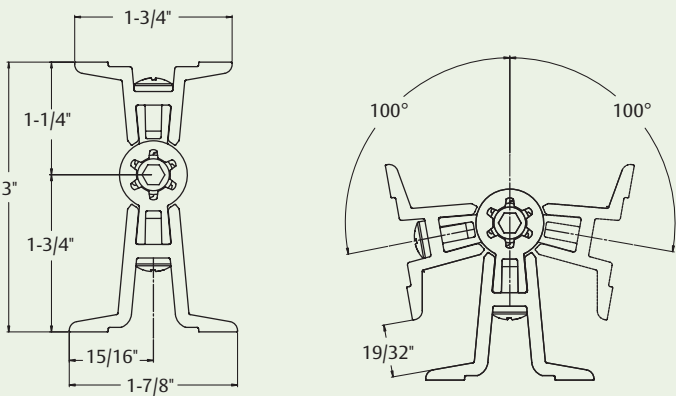
# Double Swing Hinge

Pemko double swing hinges allow the door to swing in both directions with ease. The robust design supports heavy doors that may experience abuse.

Key Feature	Benefit
Opens 100° in Either Direction	Suites with Emergency Release Stop to create an anti-barricade opening
Built-In Stop	Prevents finger pinching
Spans Opening Height	Eliminates hinge side sight line
Security Torx Fasteners	Prevents removal of hinge
Electrified SER Module	Provides quick access to concealed wire transfer to power electrified hardware
1/8" Hinge Frame and Door Leaf Offset	Eliminates ligature points across top of hinge
Gang Hole Pattern	Supports door weight with large grouping of mounting holes at top of hinge

## Key Feature Highlight

**Opens 100° in Either Direction:** Door opens 100° in the typical direction. Disengaging the Emergency Release Stop allows the door to open 100° in the opposite direction providing access to the barricaded side of the opening.



DSH1000

# Double Swing Hinge

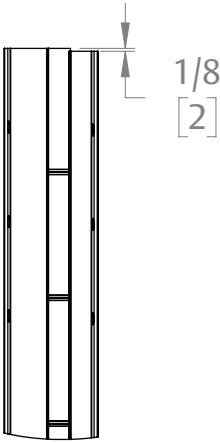
## Key Feature Highlight

1/8" Hinge Frame and Door Leaf Offset: Top of hinge frame leaf is offset from top of door hinge leaf. Top of hinge frame leaf is mounted tightly up against the top of the opening to help eliminate ligature points at top of opening.

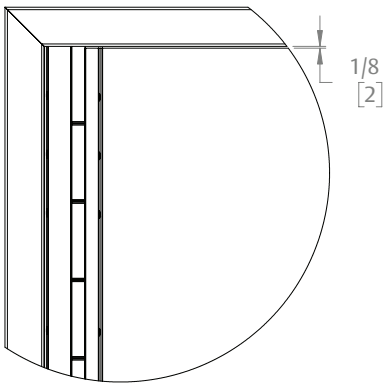
## DSH1000 CONSTRUCTION

Key Feature	Benefit
Pin & Barrel Design	Continuous hinge design reduces stress on frame
6063-T6 Aluminum Alloy/Temper	Strong, heavy-duty and durable grade aluminum
1/4" Diameter Stainless Steel Rod	Large diameter rod supports large and heavy doors
UHMW-PE Medical Bearings	High quality bearing improves life and overall hinge function

Supports door weights up to 600 lbs



DSH1000



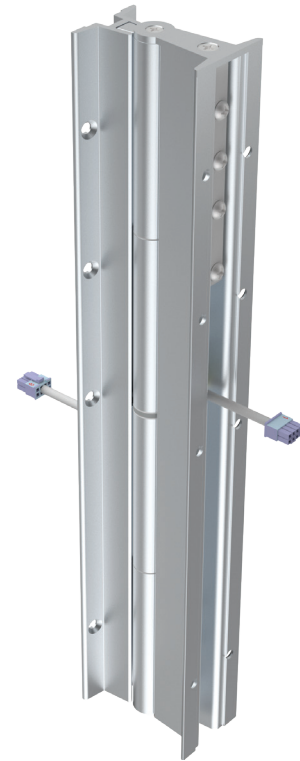
DSH1000 - In Opening

Note: Order form recommended, refer to [Pemko How to Order Guide for Pemko and Markar Hinges](#)

# Double Swing Hinge with Serviceable Electrical Module (SER)

Removable electrified SER module with Molex connectors with Electrolynx® for quick and easy access to wires without removing door from frame

- Supplied with cable leads
  - 48" (door)
  - 180" (frame)
- Top mounted – Standard Location
  - Custom location available upon request (top of hinge to centerline of prep)
- Capable of carrying 6 amps continuous or 16 amps-in-rush at 24 volts for 820 milliseconds
- Works in connection with DAISY alarm by Securitech



*DSH1000SER*



*DAISY™ Sensor Bar*

## ELECTRICAL MODIFICATIONS

Serviceable/Removable (SER) Module - 4 Wire	SER4
Serviceable/Removable (SER) Module - 8 Wire	SER8
Serviceable/Removable (SER) Module - 12 Wire	SER12

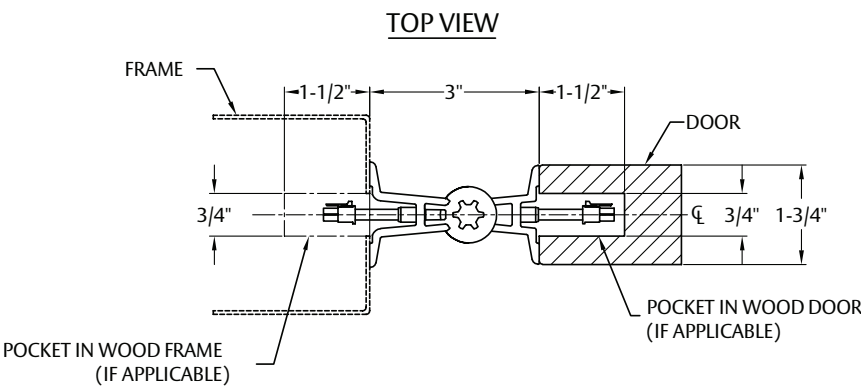
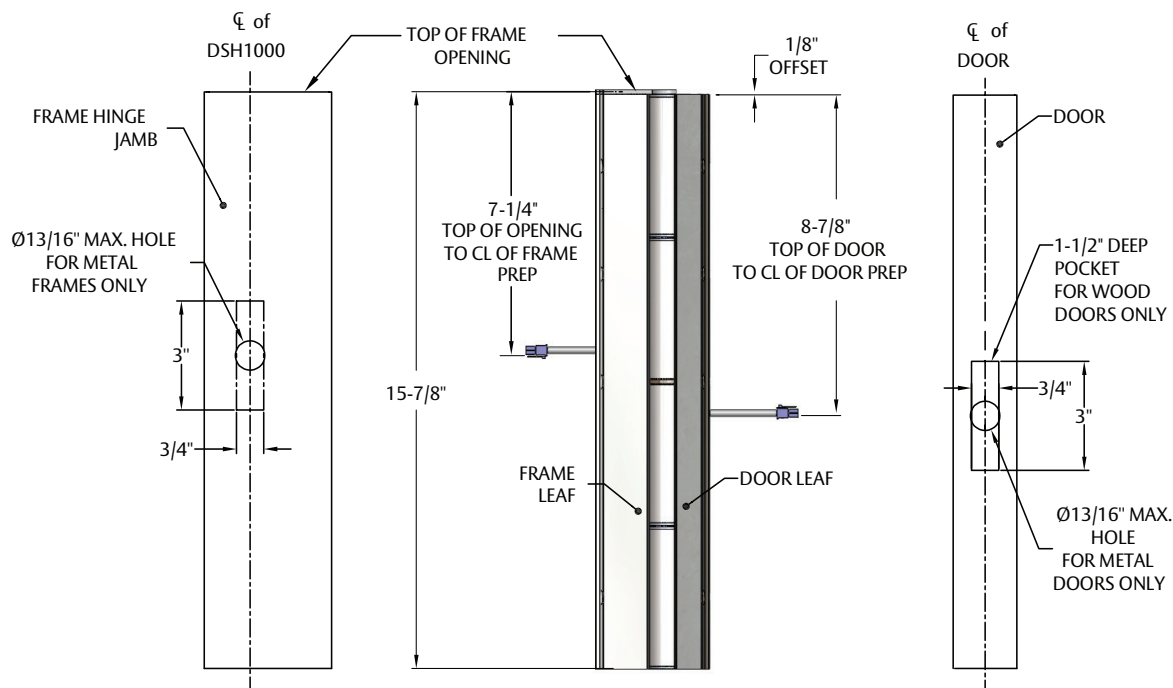




# Double Swing Hinge with Serviceable Electrical Module (SER)

## DSH1000 SER Prep

(standard location shown below)



# How to Order Double Swing Hinge

## DSH1000

### How to order

Purchase order along with the *Pemko DSH\_ x ERS\_ order form*.

Order form can be found on the website in Product Documentation [or by clicking here](#).

### Information Required with Order Form or Purchase Order

Model	Length <sup>1</sup>	Finish	Electrical Modification	Location Top to Centerline <sup>2</sup>	Fasteners	Frame Height	Door Undercut
DSH1000	84"	C: BHMA 628 Clear Anodized	"Blank" : None		"Blank": Metal x Metal		
	96"		SER4		MW: Metal x Wood		
	120"		SER8		WW: Wood x Wood		
			SER12				

### Notes:

- 1. Length will be determined from frame height and undercut dimensions
- 2. Provide location or indicate "standard location". Standard location is top of hinges.

Note: Order form required, refer to [Pemko How to Order Guide for Pemko and Markar Hinges](#)

# Emergency Release Stop

The Pemko Emergency Release Stop is used in combination with the double swing hinge to create a complete Anti-Barricade System.

In an emergency, the stop is discharged to allow the door to swing in the opposite direction. A security key is provided to release the stop from the locked position.

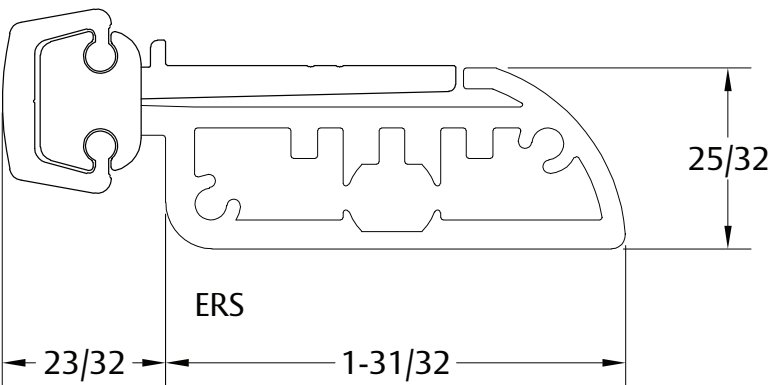
**ERSBH:** Top Flush Bolt locking into frame header

**ERSMP:** Multi-Point Latching into frame rabbet

Key Feature	Benefit
Swing Away Door Stop	Suites with double swing hinge to create anti-barricade opening
Hospital Tip	Eliminates ligature point at top of hinge
Notch Cut-Outs	Allows ERSBH to clear a variety of face mounted door hardware trim
Security Torx Fasteners	Prevents removal of Emergency Release Stop



ERSBH



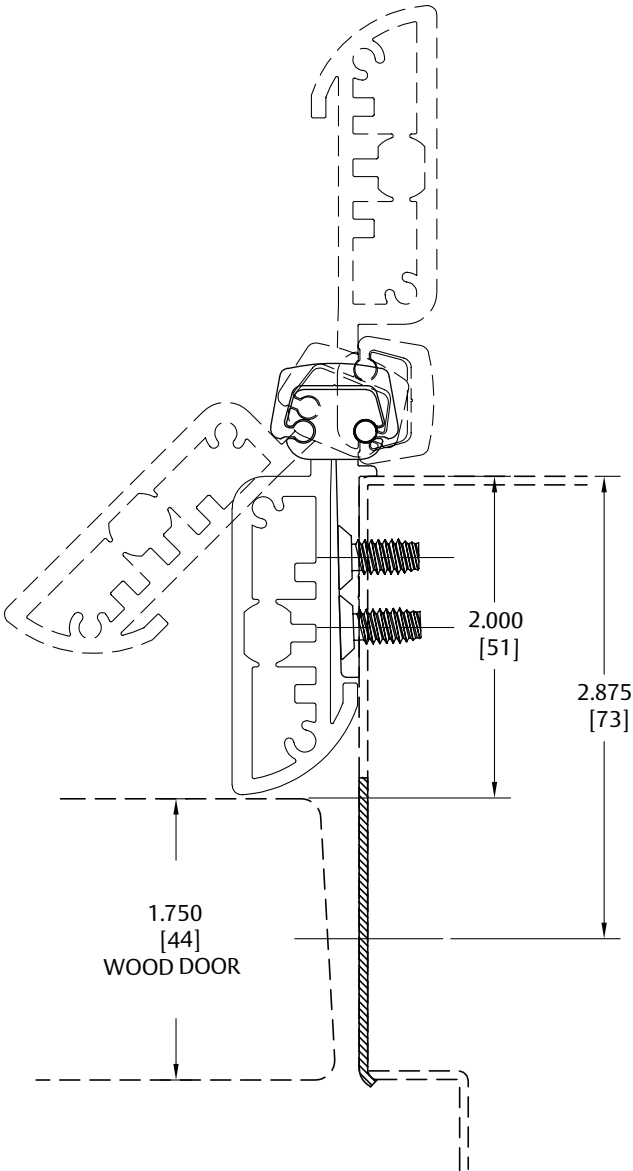
ERSMP



# Emergency Release Stop

## ERSBH & ERSMP CONSTRUCTION

Key Feature	Benefit
Geared Hinge Design	Distributes load stress uniformly along length of ERSBH
6063-T6 Aluminum Alloy/Temper	Strong, heavy-duty, durable grade aluminum
Polymer Thrust Bearing	Eliminates premature wear and supports more weight
ERSBH Notch	Clears mounted lock trim included with integrated finger pull
Key	Unlocks the ERSBH to swing away



# Emergency Release Stop

## How to Order Emergency Release Stop

### How To Order

Purchase order with ERSBH Model, Length, Finish, and completed Pemko DSH\_ x ERS\_ order form required.

ORDER FORM

**PEMKO**  
ASSA ABLOY  
Experience a safer  
and more open world

PEMKO  
DSH\_ x ERS\_

**IMPORTANT - COMPLETED FORM REQUIRED**  
Incomplete or incorrect order forms will be returned to the customer resulting in order delays.  
Manufacturer **does NOT recommend pre-drilling doors or frames** due to manufacturing tolerances.  
Compatible with these frame profiles:  
• Cased Open (Extended Lip Strike needed)  
• Cased Open Hinge jamb and Header with Single Rabbit Lockside jamb

**Customer Information**  
Company Name: \_\_\_\_\_ Contact: \_\_\_\_\_  
PO #: \_\_\_\_\_ Line #: \_\_\_\_\_

**Step 1 - Specify Handling & Quantity**  
(DSH1000 is non-handled)  
Handling required for ERS and DSH1001:  
LH/RH Qty: \_\_\_\_\_  
RH/LH Qty: \_\_\_\_\_

**Step 2 - Specify Dimensions in Inches**  
(DSH requires Frame Height and Door Undercut)  
(ERS requires All Dimensions)

**FOR DSH (Step 2)**  
**Step 3 - Choose SER** (Choose only one)  
☐ NONE  
☐ SERB (8 wires)  
☐ SER4 (4 wires)  
☐ SER12 (12 wires)  
**SER Location** - If applicable (choose only one)  
☐ STANDARD - Top of hinge, as shown  
☐ CUSTOM - Specify top of hinge to CL of prep in inches \_\_\_\_\_

**FOR ERS (Steps 4 & 5)**  
**Step 4 - Choose ERS Type**  
(Choose only one)  
☐ SINGLE POINT (ERSBH)  
(Top Flushbolt, standard)  
☐ MULTI-POINT (ERSMP)  
(Frame jamb prep required)

**Step 5 - Specify Lockset & Trim**  
(Enter complete part numbers)  
MFG: \_\_\_\_\_  
Lockset: \_\_\_\_\_  
Trim: \_\_\_\_\_

**Special Instructions (Not required)**  
\_\_\_\_\_

Pemko  
5035 Distribution Dr.  
Memphis, TN 38141  
www.pemko.com  
Memphis, TN USA  
P: 800.824.3078  
F: 800.243.3656  
Ventura, CA USA  
P: 800.283.9988  
F: 800.283.4050  
Vaughan, ON CA  
P: 800.481.3007  
F: 800.481.8989  
Copyright © 2019-2020 ASSA ABLOY Accessories and Door Controls Group, Inc. All rights reserved. Reproduction in whole or in part without the  
express written permission of ASSA ABLOY Accessories and Door Controls Group, Inc. is prohibited. Printed in the U.S.A.  
80107 2019

### Notes:

1. Length will be determined from frame height and undercut dimensions.
2. Notch type is specified by factory based on locking hardware and trim.
3. ERSMP only available with one size notch (NBP). ERSMP only works with Rose Trim (reference drawing on page 14 - figure 4).
4. Lock hardware trim over 7" in length requires a non-standard notch (NPXXL only); additional charges will apply.
5. Locking hardware and trim and location top to centerline are required.

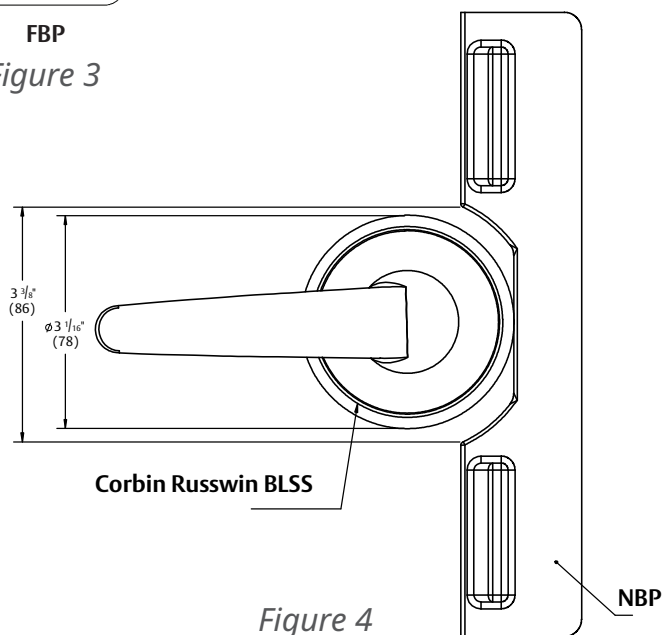
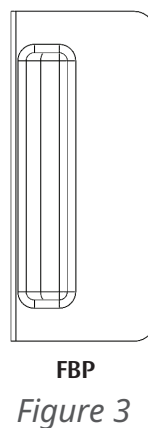
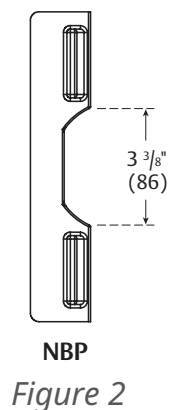
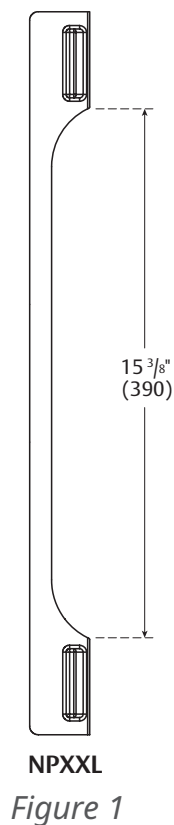
Note: Order form required, refer to [Pemko How to Order Guide for Pemko and Markar Hinges](#).

# Emergency Release Stop Notches

When the ERSBH/ERSMP stop is released from the locked position, the stop rotates out of the opening. To allow the stop to rotate freely from obstruction, a notch is required to clear the hardware trim on the door face. The ERSBH notches are designed to clear a variety of door hardware trim.

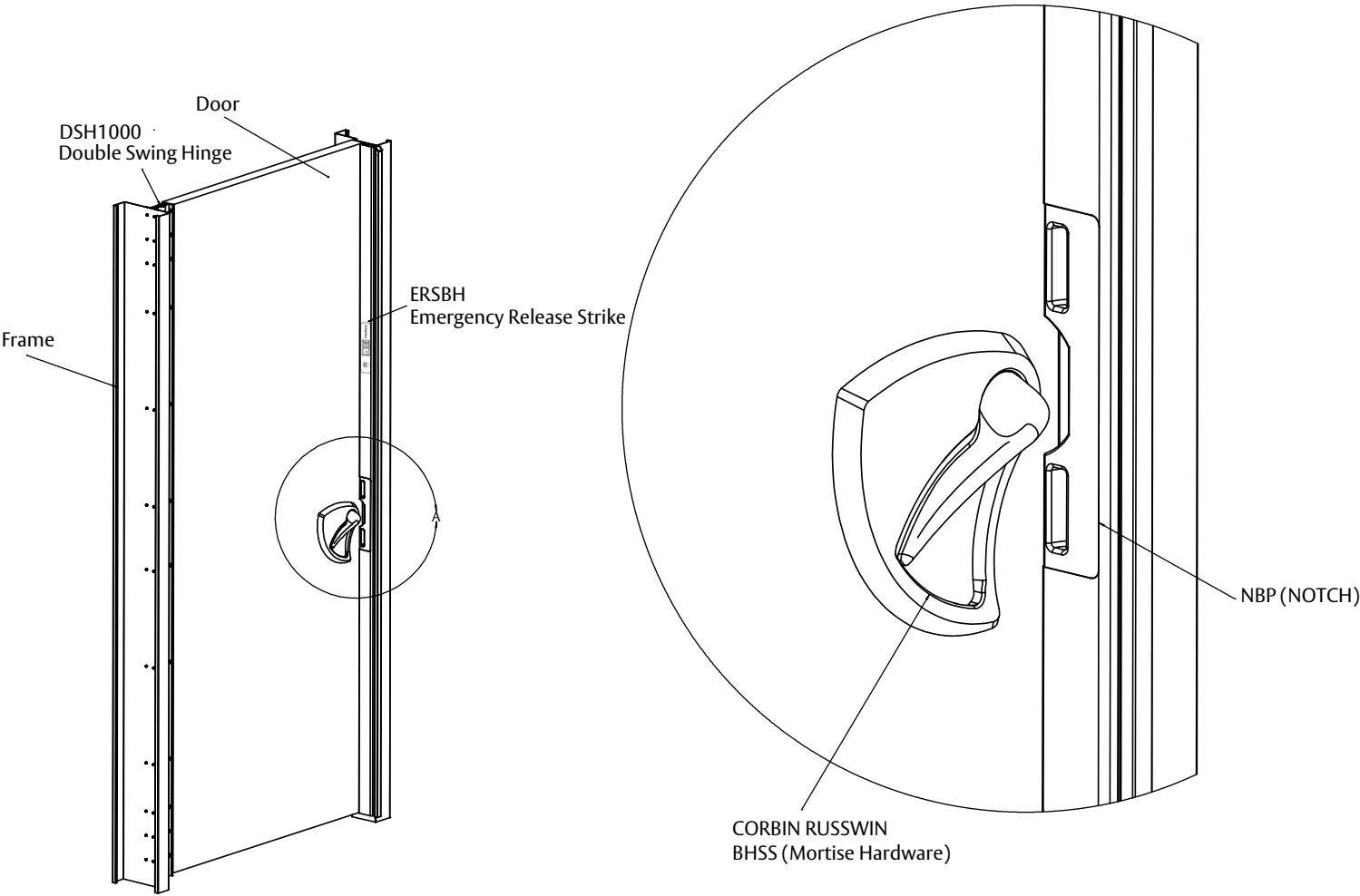
**ERSBH:** NPXXL, NBP and FBP

**ERSMP:** NBP and FBP





# Emergency Release Stop Notches



# Emergency Release Stop Frame Preparation

Frame preparation to accept the locking mechanism of the ERSBH and ERSMP.

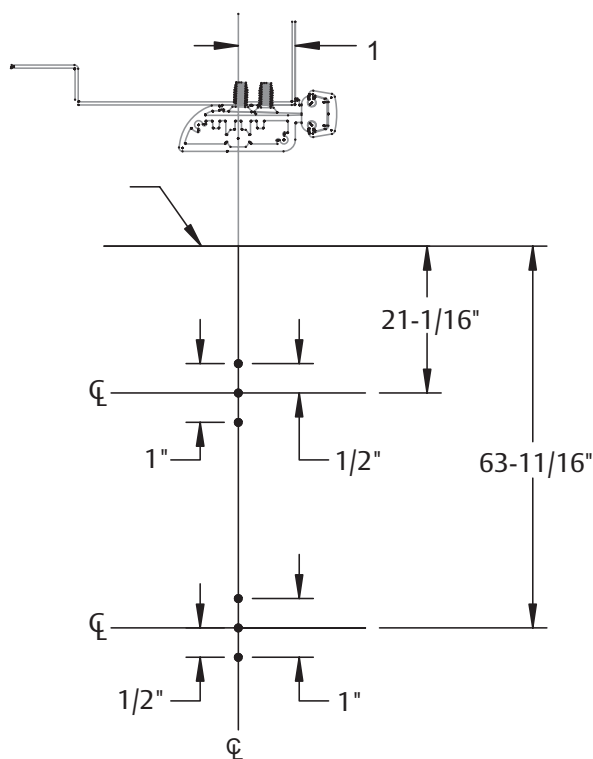
**ERSBH Frame Preparation:** 3/8" hole in header (recommend to prep in field)

**ERSMP Frame Preparation:** Factory or In-field prepping

## If field prepping:

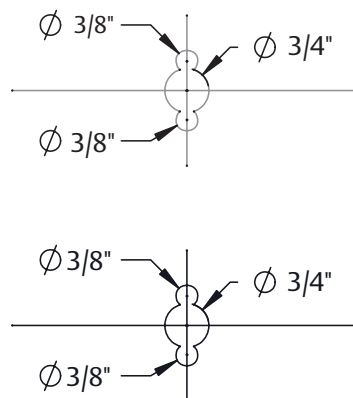
- Using a 1/8" drill bit, drill pilot holes at the six locations shown in "Frame Preparation"
- As shown in the Drill Size diagram below, enlarge each hole using a 3/8" drill bit
- Enlarge the two center holes, using a 3/4" drill bit
- Each of the two preps should resembles the two preps shown in the Drill Size diagram

## Template is for ERSMP only



Frame Preparation

## TOP OF FRAME



Drill Size

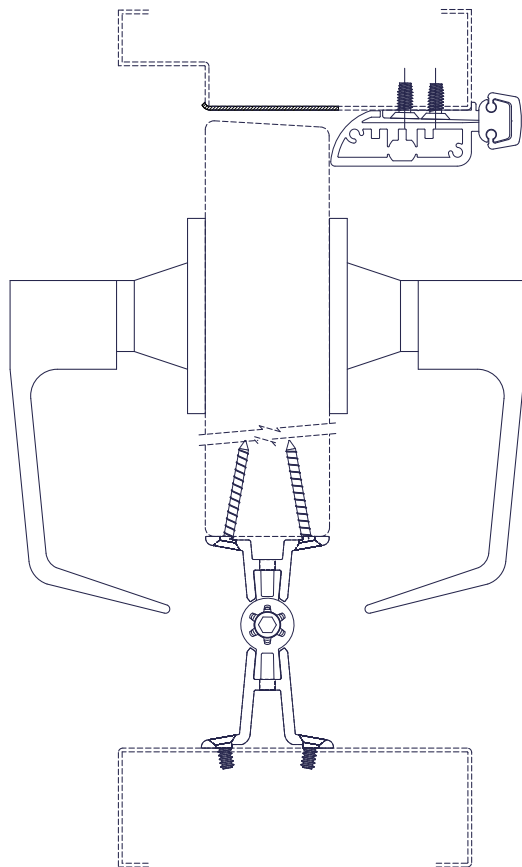
# Door Handing

The Emergency Release Stop will match the handing of the door. When the hinge is on the left and the door opens inward, the ERSBH will be left hand. When the hinge is on the right and the door opens inward, the ERSBH will be right hand.

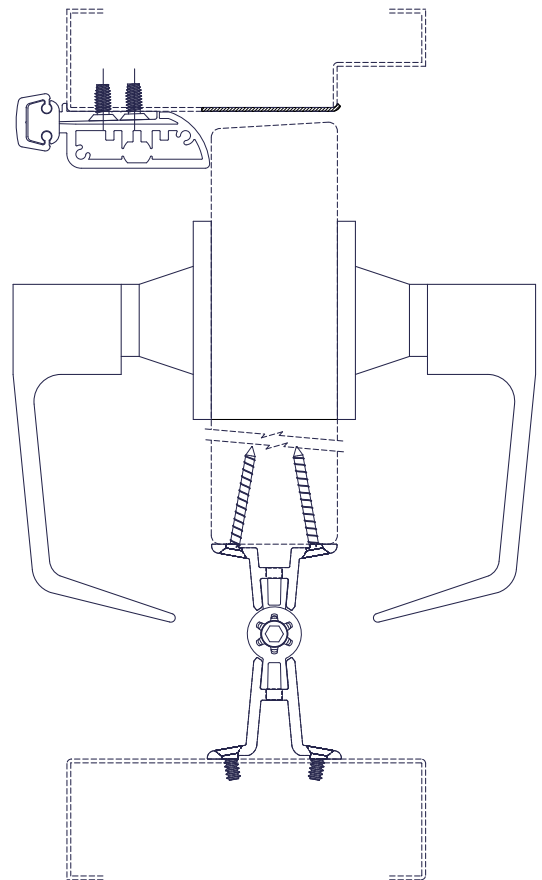
**DSH1000:** Non-handed

**ERSBH & ERSMP:** Handed

## LEFT HAND Hinges on Left Opens Inward



## RIGHT HAND Hinges on Right Opens Inward





# Hinge Clearance and Door Edges

## Hinge Clearance

Hinge clearance used to calculate door width ordering size

DSH1000: 3" hinge clearance

Lock-side: 1/8" minimum clearance

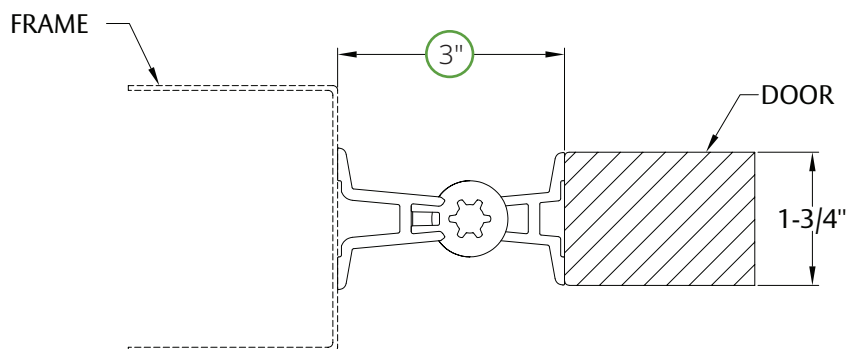
Net door width = Opening width - 3 1/8"

Example: 36" - 3 1/8" = 32 7/8" net door width

## Door Edges (recommendation)

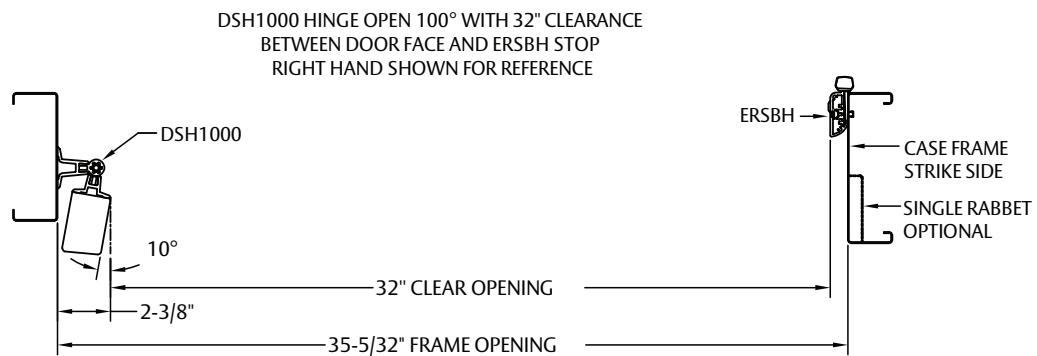
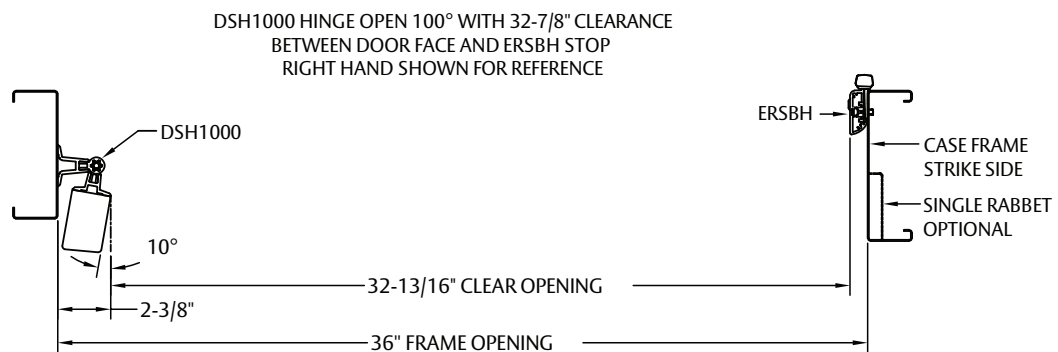
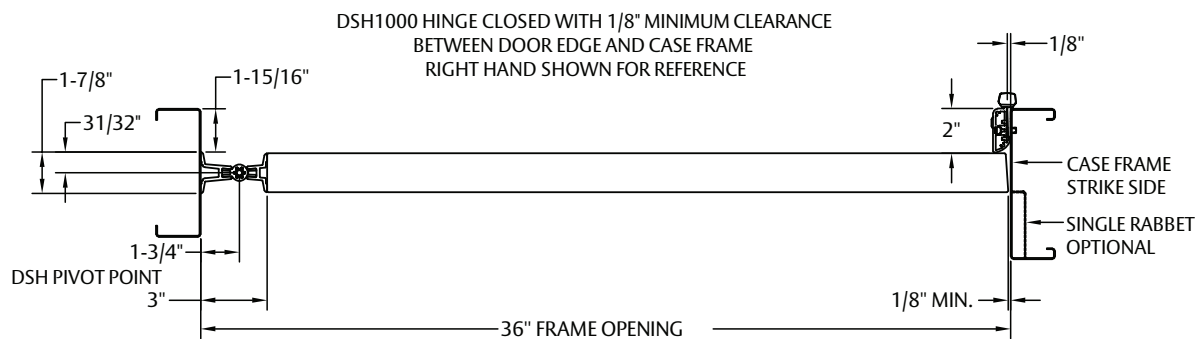
Hinge side: Square edge

Lock-side: Beveled edge



# Clear Opening Widths

## DSH1000



# Frame Applications & Strike

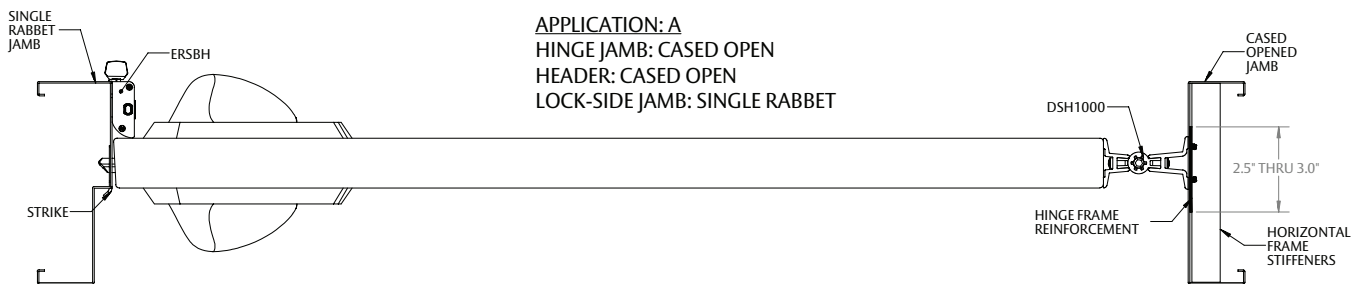
## Frame Applications:

Two types of frame applications are recommend for use with the double swing hinge and emergency release stop.

Application A: Eliminates the need for an extended lip strike  
(strike mounted on soffit)

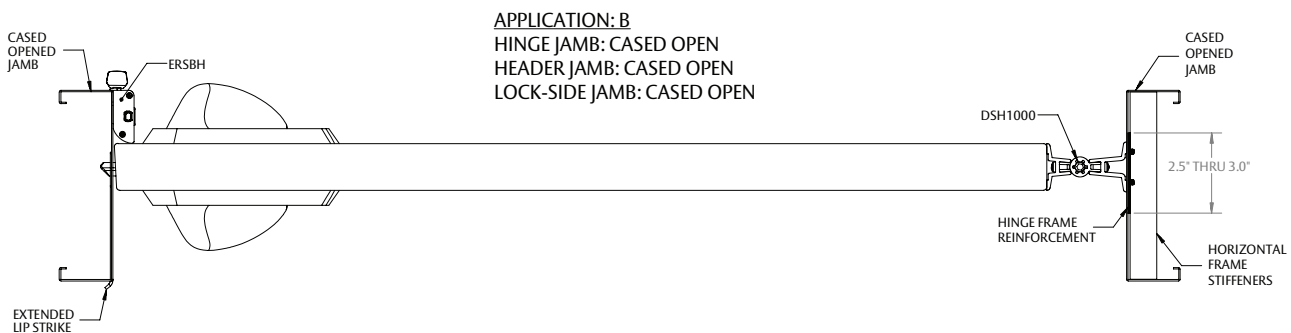
Hinge Jamb & Header: Cased open

Lock-side Jamb: Single rabbet



Application B: Extended lip strike is needed

Hinge Jamb, Lock-side Jamb & Header: Cased open



## Strike:

Standard hardware strike is used to work with locking hardware.

**\*\*\* No Double Lip Strike is needed for the DSH x ERSBH Anti-Barricade Solution\*\*\***



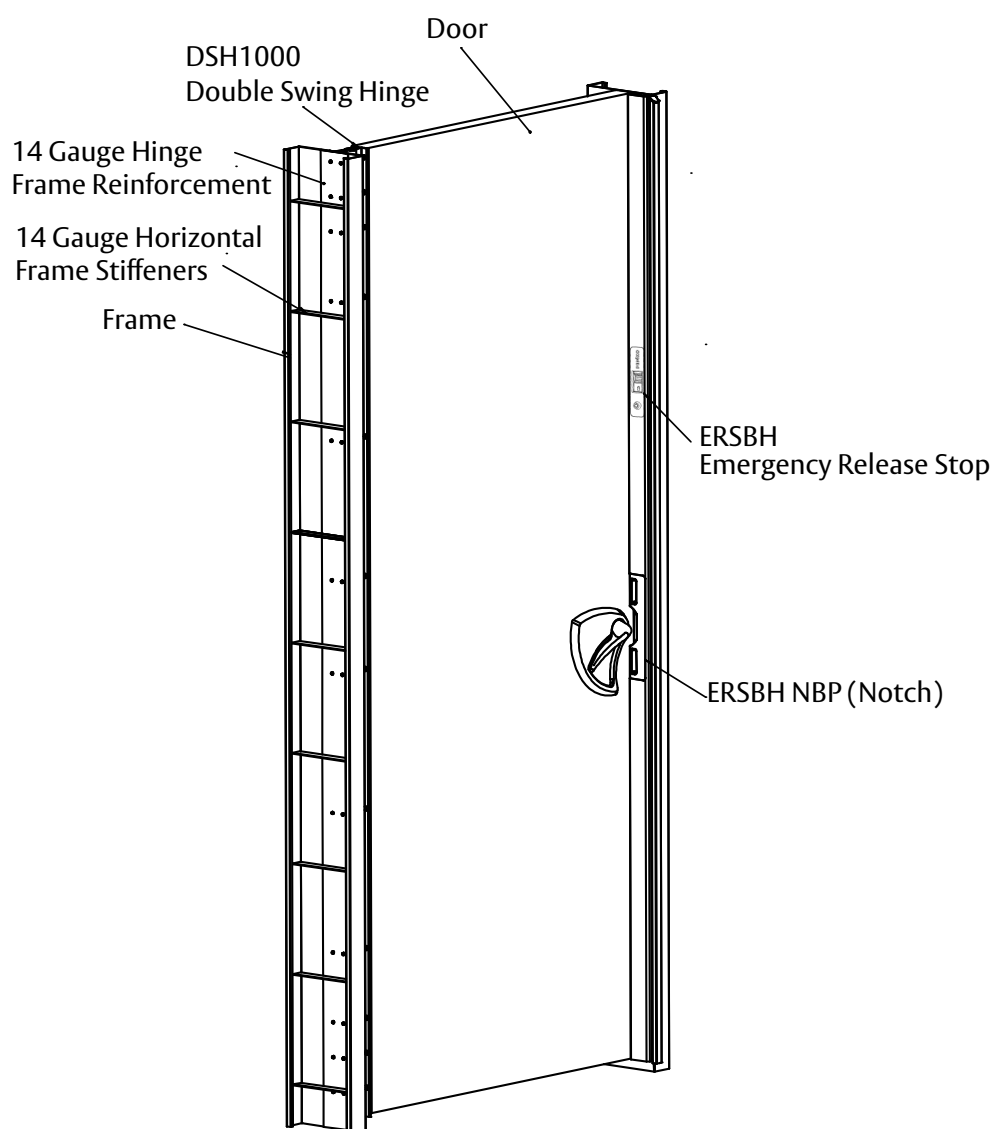
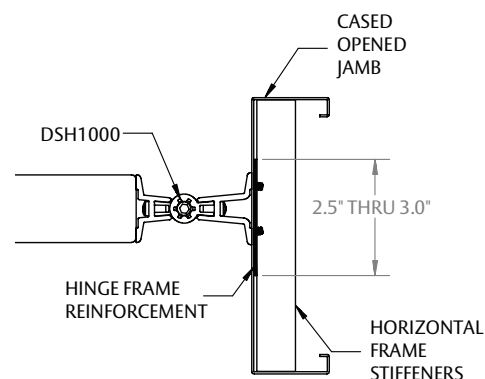
# Frame Reinforcement

## Frame Applications:

Horizontal frame stiffeners are recommended to keep the hinge mounting surface flat when the door and hinge are mounted. Vertical hinge reinforcement is recommended to prevent the hinge mounting screws from pulling out of the frame.

## Note:

Follow the frame manufacturer's instructions for proper frame reinforcement.



# Compatible Pemko and Securitech Products

ASSA ABLOY offers a variety of ligature-resistant products that are free from sharp edges or potential catch points. These products often feature rounded surfaces and low profiles in order to secure rooms in healthcare environments without presenting potential safety hazards.

Refer to the New York State Office of Mental Health (OMH) Patient Safety Standards for current product compliance.

## Securitech Ligature-Resistant Products



*A4L SERIES*



*SOLIS*



*DAISY™ Sensor Bar*

## P44 Perforated Adhesive Gasket



*P44*

## P88 Perforated Adhesive Gasket



*P88*

## 290\_V Perimeter Gasket with Vinyl Insert



*290\_V*

## 303\_PK Perimeter Gasket with Thermal Plastic Elastomer Insert



*303\_PK*

## 303\_V Perimeter Gasket with Vinyl Insert



*303\_V*

## 316\_V Perimeter Gasket with Vinyl Insert



*316\_V*

## 2891\_V Perimeter Gasket with Vinyl Insert



*2891\_V*

# Compatible Rockwood Products

Refer to the New York State Office of Mental Health (OMH) Patient Safety Standards for current product compliance.

## 467-RKW and 468-RKW Heavy Duty Door Stops



467-RKW



468-RKW

## 406 Convex Wrought Wall Stop, 409 Concave Wrought Wall Stop



406



409

## 94C Recessed Flush Pull



94C

## 592 Roller Latch



592

The ASSA ABLOY Group is the global leader in access solutions.  
Every day, we help billions of people experience a more open world.

ASSA ABLOY Opening Solutions leads the development within door openings and products for access solutions in homes, businesses and institutions. Our offering includes doors, frames, door and window hardware, mechanical and smart locks, access control and service.

**PEMKO**  
**ASSA ABLOY**



Pemko  
5535 Distribution Dr.  
Memphis, TN 38141  
[www.pemko.com](http://www.pemko.com)  
[orders.pemko@assaabloy.com](mailto:orders.pemko@assaabloy.com)

Memphis, TN USA  
P: 800 824 3018  
F: 800 243 3656

Ventura, CA USA  
P: 800 283 9988  
F: 800 283 4050

Vaughan, ON CA  
P: 800 461 3007  
F: 800 461 8989