

HYD-HINGE Glass to Wall Hydraulic Hinge Instructions

Experience a safer
and more open world

NOTE: When installing ADA version of HYD-HINGE, the hydraulic hinge will mount at the bottom location, while the dummy hinge (SOL) mounts at the top location.

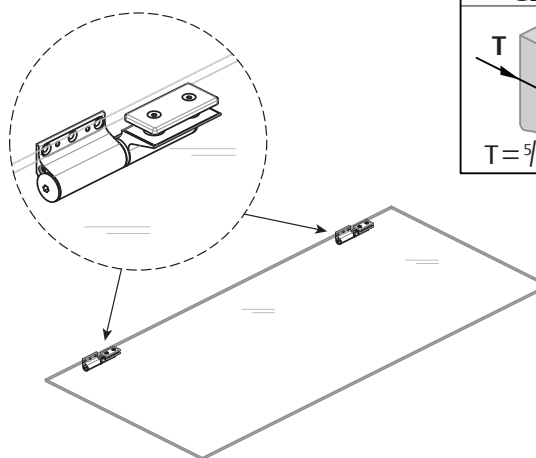
WARNING: Must be installed into wall blocking. If you have questions about what type of wall blocking is required, consult a structural engineer.

Instructions

1. Attach Hinges to Glass Door

- A: Align hinge to door holes.
 - B: Tighten screws with Allen wrench.
- See Figure 1 for reference.

Note: When installing lay glass door horizontally. Make sure glass is clean.



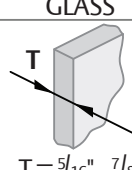
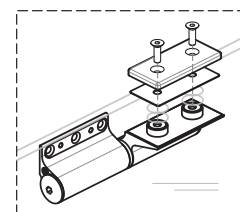
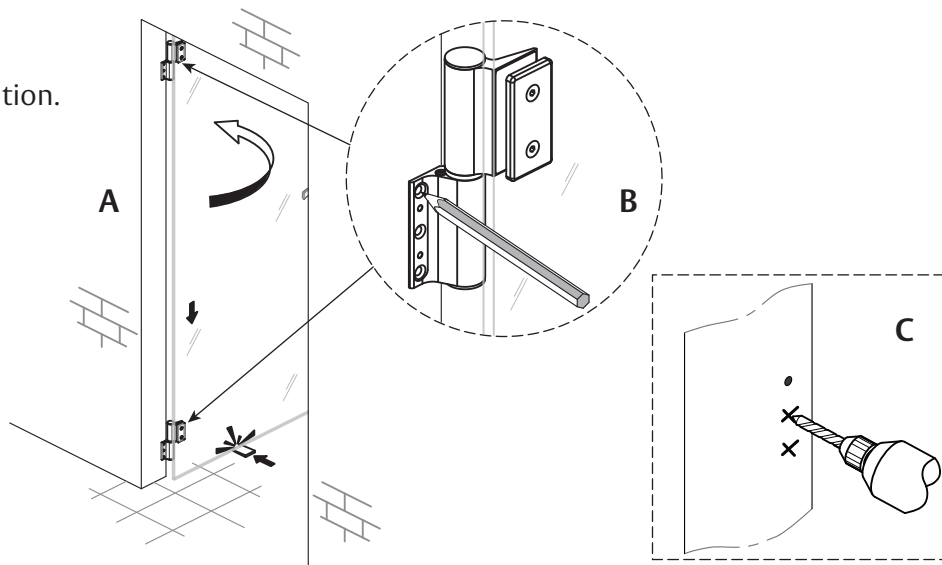
GLASS	T	SCREW
	$\frac{5}{16}'' - \frac{3}{8}''$	M6x16
	$\frac{3}{8}'' - \frac{1}{2}''$	M6x20
	$\frac{1}{2}'' - \frac{11}{16}''$	M6x25
	$\frac{11}{16}'' - \frac{7}{8}''$	M6x30

Figure 1



2. Prep Opening

- A: Position door in desired location.
- B: Mark hinge holes for drilling.
- C: Drill appropriate holes into opening jamb.

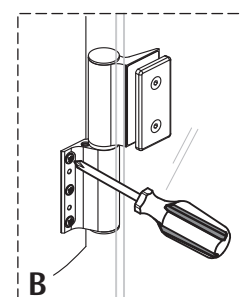
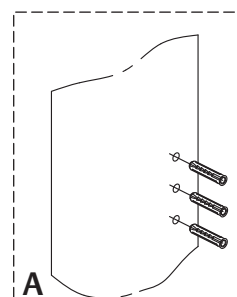


3. Attach Door

- A: Place anchors into prepped holes if needed for wall condition.
- B: Position and fasten door to jamb using screws.

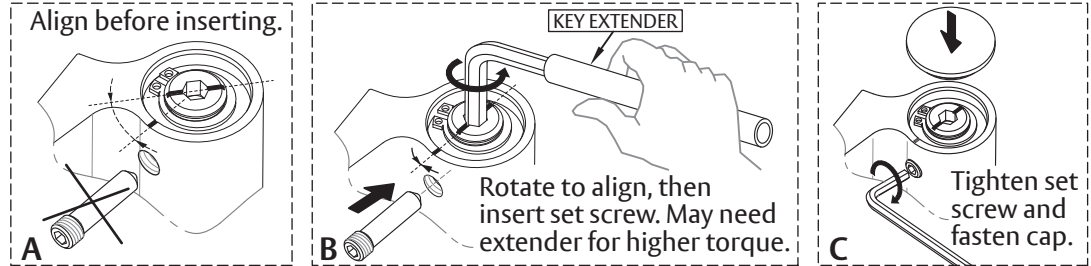
Anchors and screws supplied by others.

Must be installed into wall blocking. If you have questions about what type of wall blocking is required, consult a structural engineer.



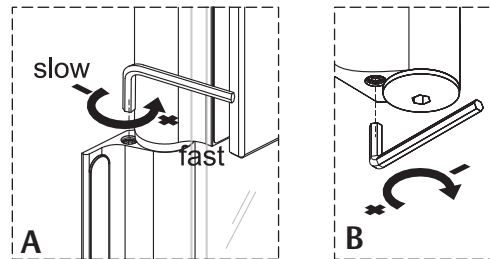
4. Align Top Hinge

- A: Align center shaft with hole.
- B: Insert set screw.
- C: Tighten set screw and fasten cap.



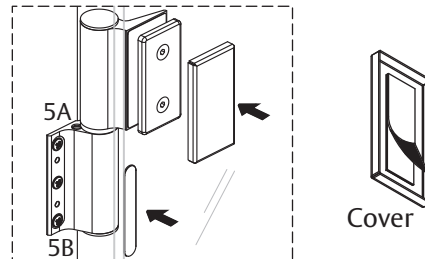
5. Adjust Closing and Latching Speed of Top Hinge

- A: Use Allen wrench to adjust closing speed.
- B: Use Allen wrench to adjust latching speed.



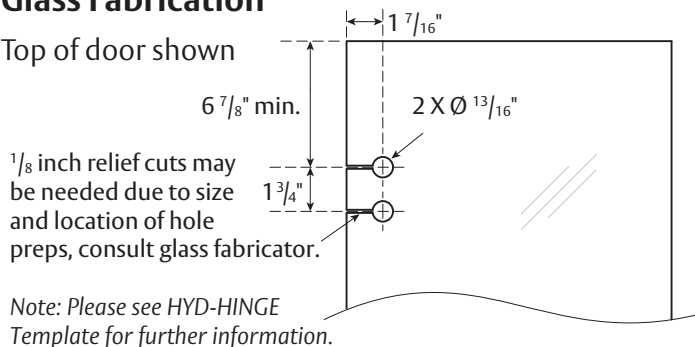
Repeat steps 4 & 5 for bottom hinge.

6. Place decorative covers on hinges.



Glass Fabrication

Top of door shown



Bottom location off floor.

