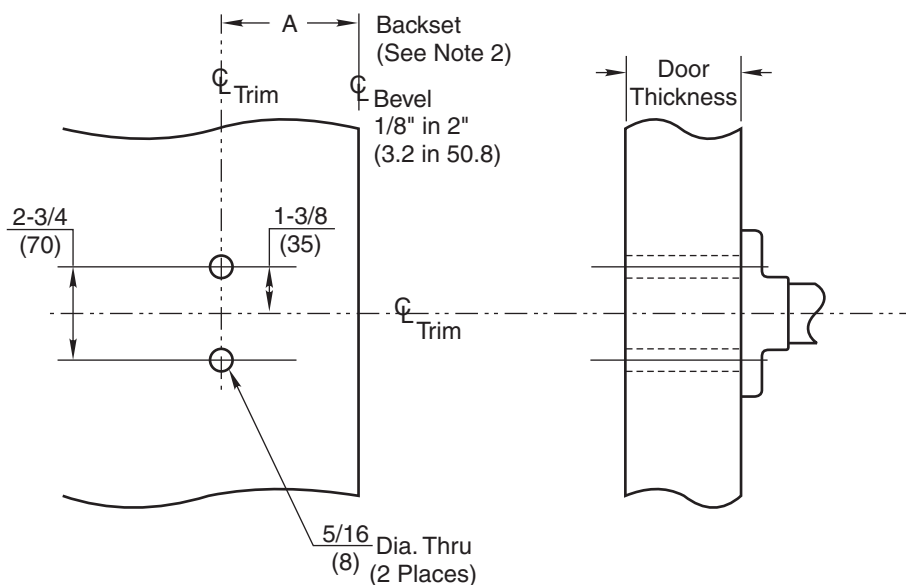


Notes:

1. Dimensions given in inches and (mm).
2. Backset is measured from centerline of bevel which is centerpoint of door thickness.

TEMPLATE CROSS REFERENCE

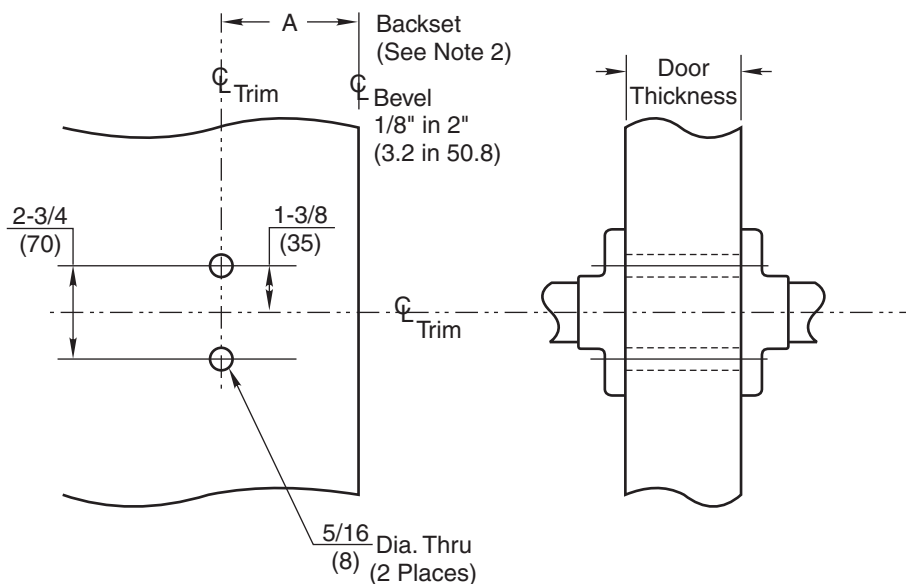
DESCRIPTION	TEMPLATE
CLX3300 Series Cylindrical Lever Lock	T31253



**HALF DUMMY TRIM
CLX3350**

BACKSET A

2-3/4 (69.9)	Regular
3-3/4 (95.3)	Optional
5 (127)	



**FULL DUMMY TRIM
CLX3370**

RESPONSIBILITY

DOOR AND FRAME MANUFACTURERS ARE RESPONSIBLE FOR PROVIDING ADEQUATE CONSTRUCTION OR REINFORCEMENTS FOR PROPER INSTALLATION OF HARDWARE SHOWN. ALL ARCHITECTURAL BUILDERS HARDWARE MUST BE INSTALLED ON PROPERLY REINFORCED DOORS AND FRAMES, REGARDLESS OF TYPE, MATERIAL, OR METHOD OF CONSTRUCTION.

**CLX3300
Half and Full Dummy Trim**

**Corbin
Russwin®**
ASSA ABLOY

www.corbinrusswin.com

SUPERSEDES	DO NOT SCALE DRAWING		
TEMPLATE NUMBER	SHEET	DATE	
T31254	1 of 1	03/21	

Experience a safer and more open world

Copyright © 2021, ASSA ABLOY Access and Egress Hardware Group, Inc. All rights reserved. Reproduction in whole or in part without the express written permission of ASSA ABLOY Access and Egress Hardware Group, Inc. is prohibited.