

# McKinney MK150/MK150ME

## Concealed Hinges Series



MK150

### SPECIFICATIONS:

**MATERIAL:** Zinc Alloy

#### OVERVIEW:

Refined and minimal, the McKinney Concealed Hinges feature 3-Dimension adjustability for easy installation and door alteration. The magnetic covers conceal screws for a clean aesthetic.

#### OPTIONS:

- Overall hinge length: 200 mm (7.87")
- Hinge width: 32 mm (1.26")
- Non-handed
- Opening angle: 180 degrees
- 3-Dimensional adjustability:
  - Vertical +/- 3 mm
  - Horizontal +/- 3 mm
  - Depth +/- 1 mm
- For wood or hollow metal doors with wood or metal frames
- UL Listed for hollow metal, steel covered composite and wood core fire doors rated 20 minutes
- MK150ME available in CC12 or QC12 configurations

### AVAILABLE FINISHES:

- Satin Chrome (PN# MK67018)
- Satin Chrome CC12 (PN# MK67060)
- Matte Black CC12 (PN# MK67061)
- Satin Chrome QC12 (PN# MK67068)
- Matte Black QC12 (PN# MK67069)

MK150ME  
(CC12)MK150ME  
(QC12)

**Hinge Capacity** - Door thickness minimum: 1 1/2"

Number of Hinges	Door Width			
	32"	36"	42"	48"
2	366 lbs	326 lbs	280 lbs	245 lbs
3	412 lbs	367 lbs	315 lbs	275 lbs
4	457 lbs	408 lbs	350 lbs	306 lbs

The ASSA ABLOY Group is the global leader in access solutions. Every day we help people feel safe, secure and experience a more open world.

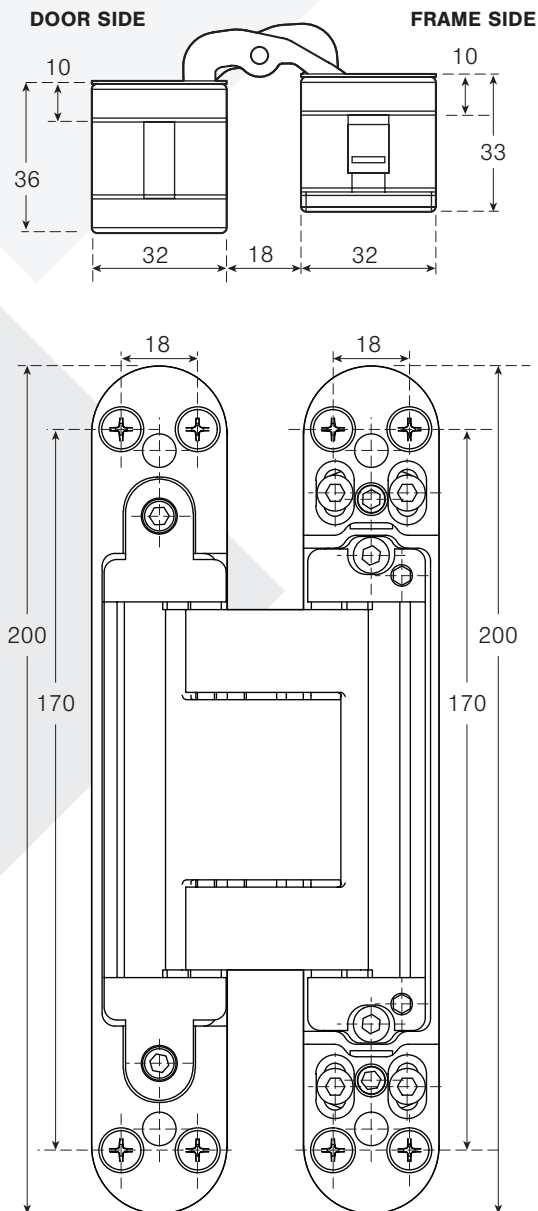
**McKinney®**

**ASSA ABLOY**

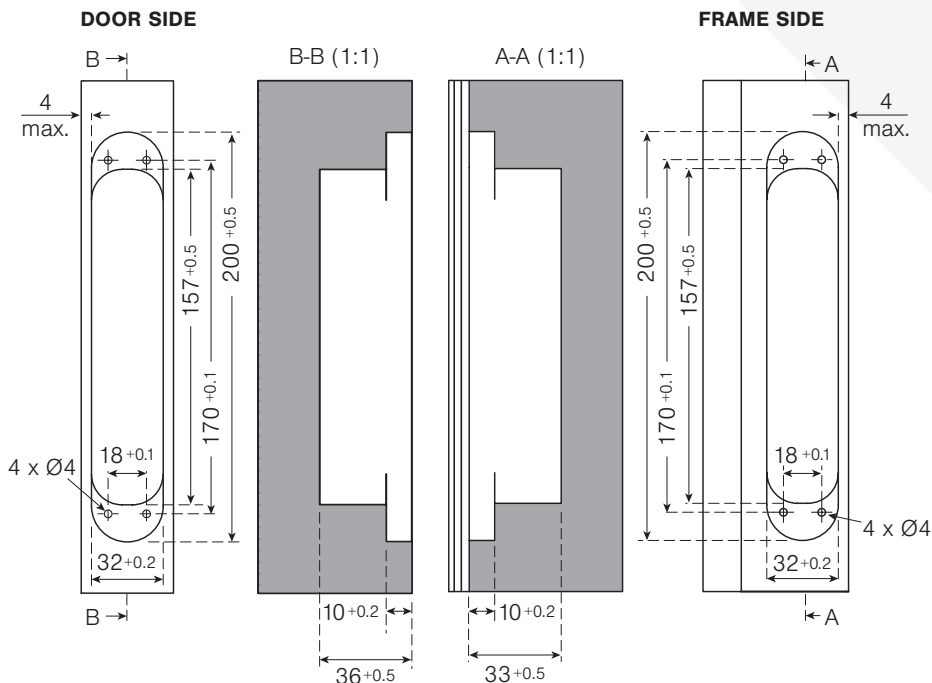
Experience a safer  
and more open world

## NOT TO SCALE

### Hinge Dimensions (millimeters)



### Milling Dimensions (millimeters)



### Adjustment

