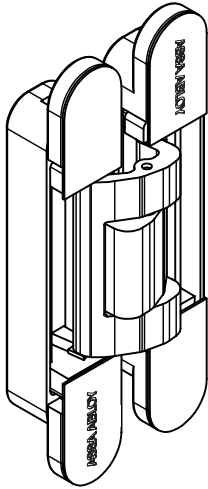


# Architectural Door Accessories

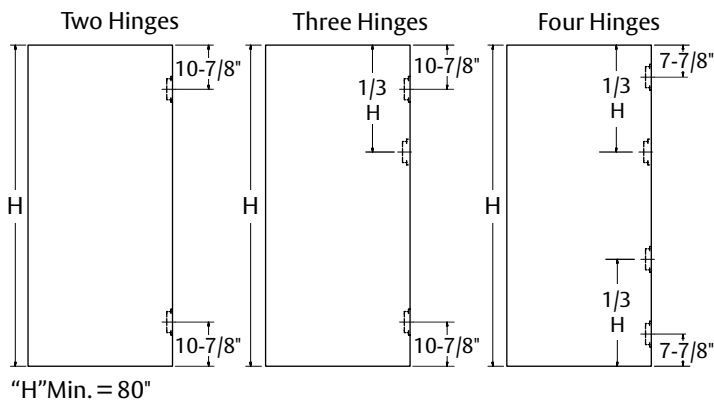
**ASSA ABLOY**  
Opening Solutions

## McKinney 150 Concealed Hinge 3D Adjustable

Experience a safer  
and more open world



Hinge Arrangement



### Load Capacity

See chart for minimum number of hinges required based on correct adjustment (all hinges carrying load), door width and door weight.

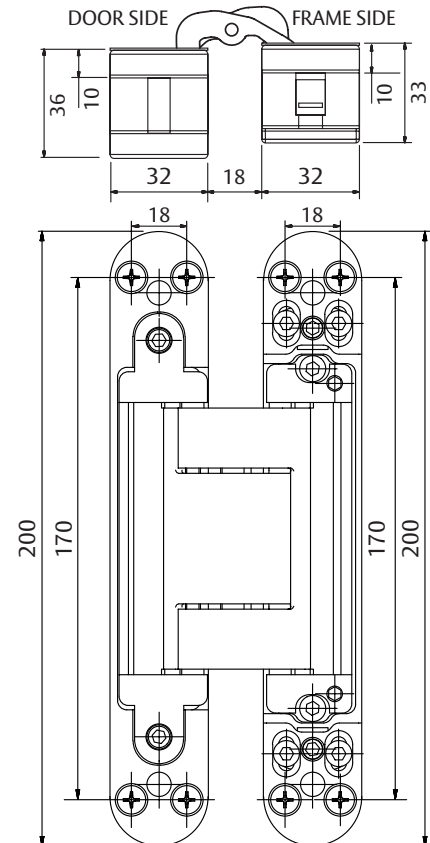
Door height minimum is 80".

Door thickness minimum is 1-1/2".

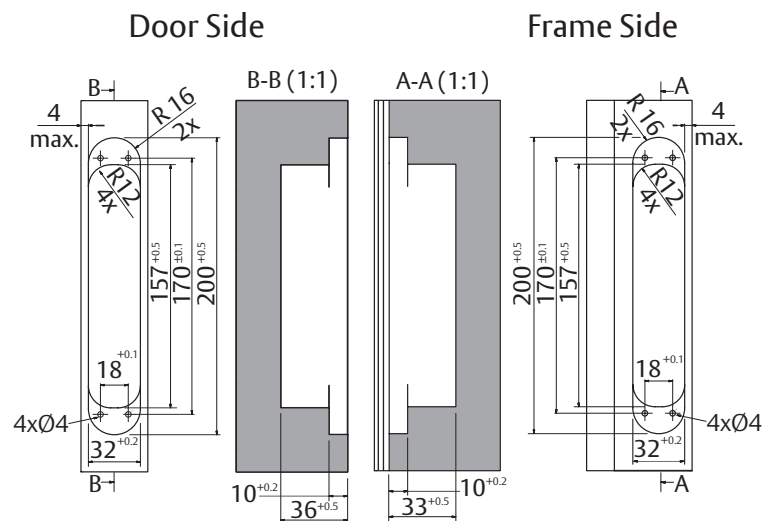
Note: Hinge spacing does not effect load capacity. The first door should always be checked before preparing more doors, if any. When installing with a door closer, at least 3 hinges are required, and reduce maximum door weight in chart by 30%.

Hinges	Door Width			
	32"	36"	42"	48"
2	366 lb	326 lb	280 lb	245 lb
3	412 lb	367 lb	315 lb	275 lb
4	457 lb	408 lb	350 lb	306 lb

### Hinge Dimensions (millimeters)



### Milling Dimensions (millimeters)

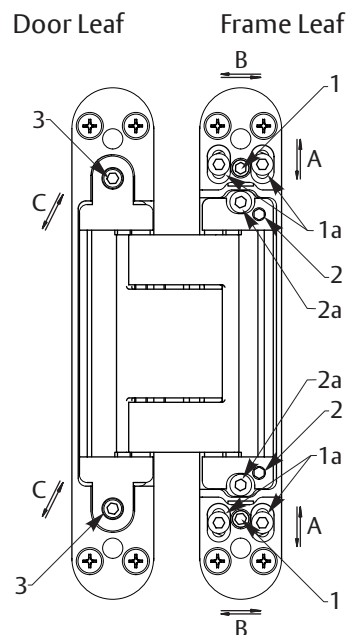


Technical drawing of a door frame assembly. The drawing shows a cross-section of a door frame with a door. Key dimensions and tolerances are indicated:

- Frame Dimensions:**
  - Top horizontal dimension:  $10^{+0.2}$
  - Left vertical dimension:  $32^{+0.2}$
  - Bottom horizontal dimension (left section):  $4$  max.,  $33$  min.
- Door Dimensions:**
  - Top horizontal dimension:  $10^{+0.2}$
  - Left vertical dimension:  $32^{+0.2}$
  - Bottom horizontal dimension (left section):  $36$  min.,  $4$  max.
- Assembly Dimensions:**
  - Bottom horizontal dimension (total):  $1.5$  min. -  $7.5$  max.
  - Right vertical dimension:  $B$
- Labels:**
  - Frame** (top left and top right)
  - Door** (center)
  - G** (top center, pointing to the top of the door frame)
  - L** (bottom center, pointing to the bottom of the door frame)

"G" Thick- ness of Door	"L" Width of Door			
	32"	36"	42"	48"
	"B" Minimum Gap (mm)			
1-3/4"	4	4	3	3
2"	5	4	4	4
2-1/4"	5	4	4	4

1. Insert each hinge section marked "door" into door sockets created in milling. Hinges should be flush against door edge surface.
2. Secure hinge sections with four (4) M5-0.8x20mm metal screws or 35mm PHWS wood screws provided in screw packet.
3. Set door on frame by inserting each loose hinge section into socket created in milling.
4. Secure each hinge with four (4) M5-0.8x20mm metal screws or 35mm PHWS wood screws provided in screw packet.
5. Make adjustments.
6. Insert front hinge covers to hide screws.  
Note: Removal of covers should be done carefully.



- A. Vertical Adjustment** adjusts door up and down in frame (range +/- 3mm):
  - Loosen all blocking screws (1a) and unscrew top adjustment screw (1) until even with front surface of hinge.
  - Adjust by turning bottom adjustment screws (1). Alternate between hinges, max half turn at a time.
  - After adjusting, tighten all blocking screws (1a).
- B. Depth Adjustment** adjusts door in and out of frame (range +/- 1mm):
  - Loosen both blocking screws (2a).
  - Adjust by turning eccentric pins (2). Eccentric pins must be set in the same position.
  - After adjusted, tighten all blocking screws (2a).
- C. Horizontal Adjustment** adjusts door left and right in frame (range +/- 3mm):
  - Adjust by turning adjustment screws (3).
  - Ensure both screws are adjusted evenly in the insert.