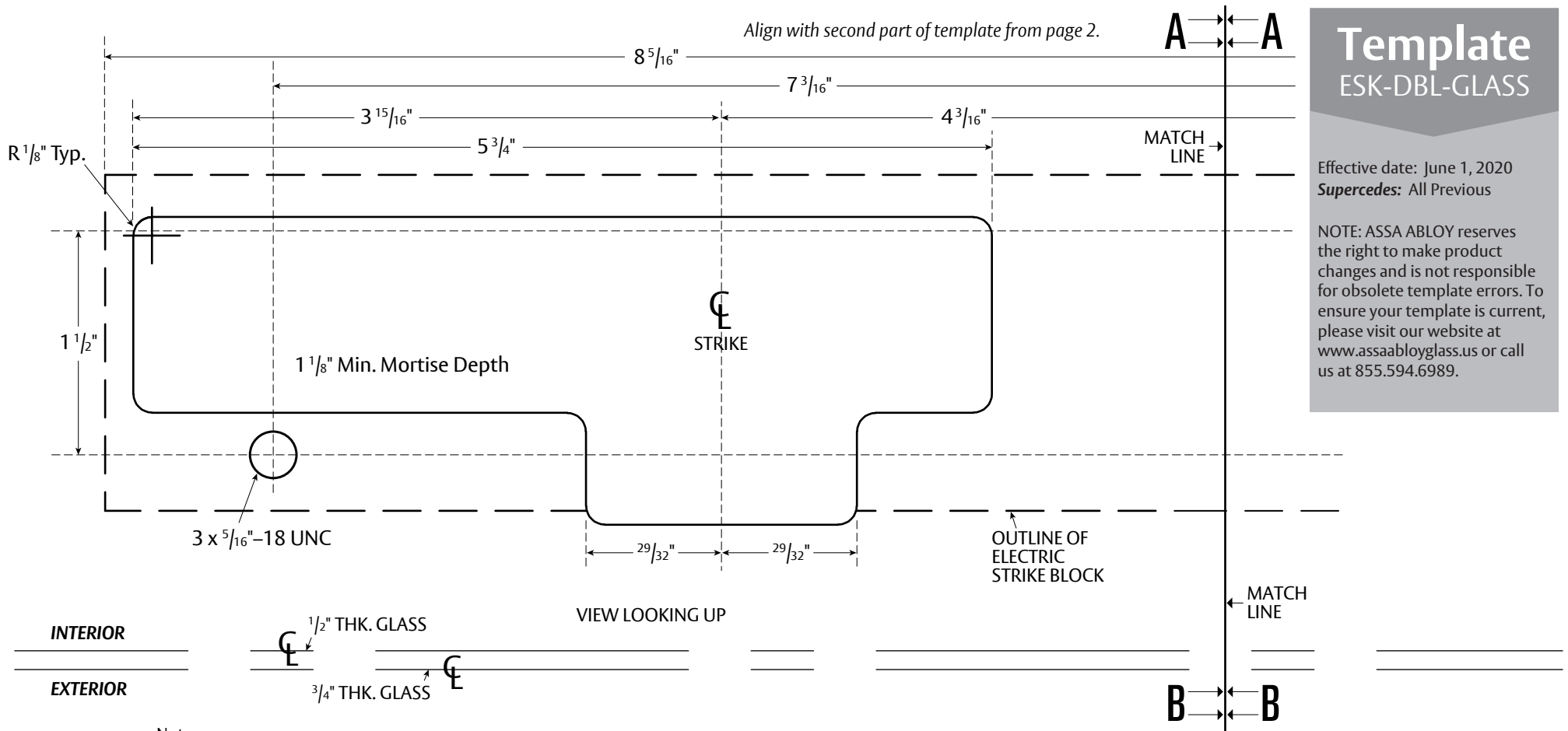


ESK-DBL-GLASS Double Electric Strike for Glass Doors (Page 1)

Experience a safer
and more open world



Template
ESK-DBL-GLASS

Effective date: June 1, 2020
Supersedes: All Previous

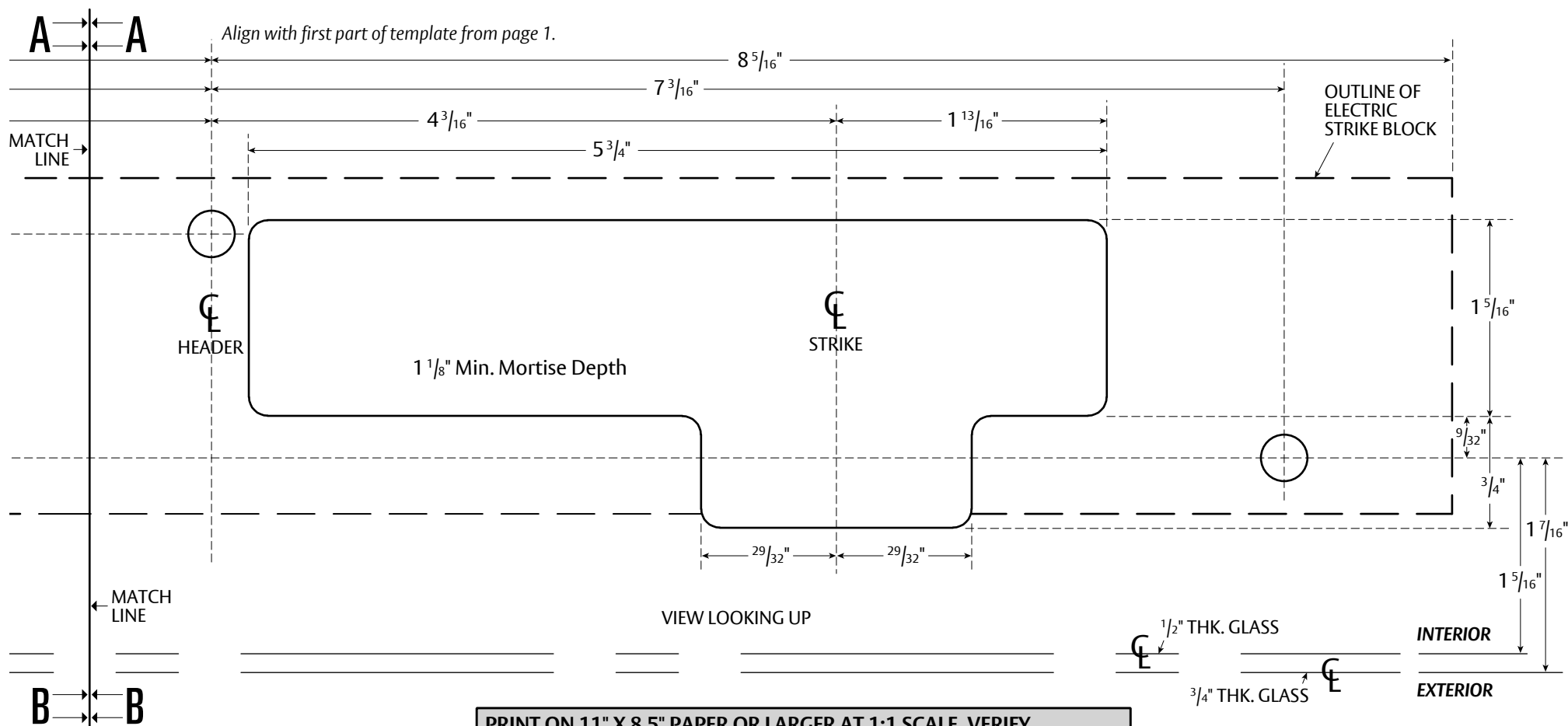
NOTE: ASSA ABLOY reserves the right to make product changes and is not responsible for obsolete template errors. To ensure your template is current, please visit our website at www.assaabloyglass.us or call us at 855.594.6989.

- Notes:
1. Allowable gap between doors is $\frac{1}{8}$ ", consult factory if gap is not $\frac{1}{8}$ ", allowable backset for double doors is $4 \frac{1}{8}$ ".
 2. View is from bottom of the header.
 3. Prep shown is for glass doors only.
 4. $\frac{5}{16}$ -18 fasteners provided.

PRINT ON 11" X 8.5" PAPER OR LARGER AT 1:1 SCALE. VERIFY MEASUREMENTS AFTER PRINTING BEFORE USING THIS AS A TEMPLATE.

The ASSA ABLOY Group is the global leader in access solutions. Every day we help people feel safe, secure and experience a more open world.

ESK-DBL-GLASS Double Electric Strike for Glass Doors (Page 2)



PRINT ON 11" X 8.5" PAPER OR LARGER AT 1:1 SCALE. VERIFY MEASUREMENTS AFTER PRINTING BEFORE USING THIS AS A TEMPLATE.