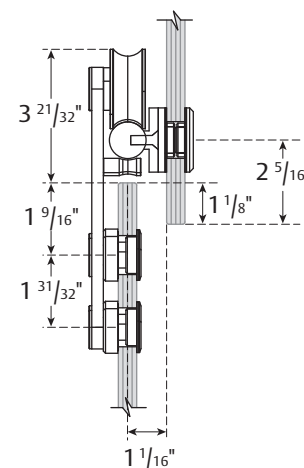
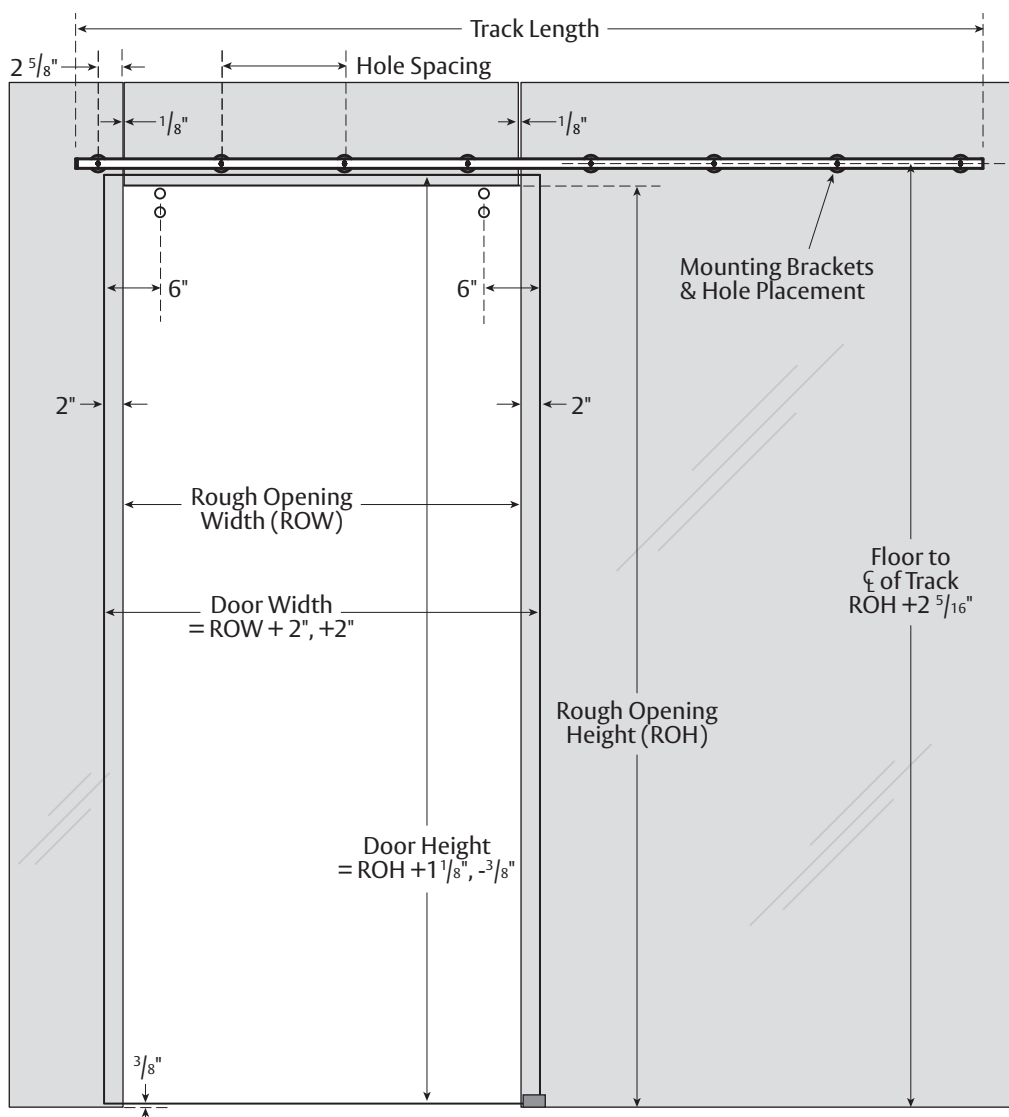


G70 Series Glass Mount Install Instructions

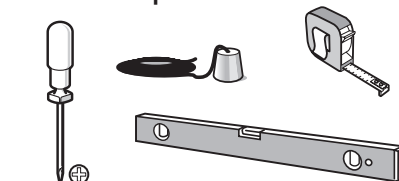
Experience a safer
and more open world

WARNING: Transom glass must be mechanically fixed to structural support.
Track not intended to support transom glass. Glass Mount option is glass to glass mounting.

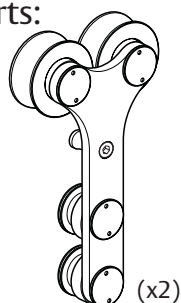


Door Width	Hole Spacing	# Of Mtg Brackets	Track Overall Length
28" - 30.75"	10.625"	7	68.5"
30.875" - 38.5"	13.375"	7	85"
38.625" - 40.75"	11.5"	8	85.25"
40.875" - 43"	12.25"	8	90.5"
43.125" - 46"	13"	8	95.75"
46.125" - 49.375"	14"	8	102.75"
49.5" - 51.625"	15.125"	8	110.625"
51.75" - 56"	15.875"	8	115.875"

Tools Required:



Parts:



(A/R)



(A/R)



(A/R)



M6X10 (A/R)



1/4-20 X 3/4" (A/R)



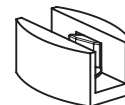
(x2)



(x1)



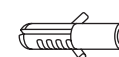
(x1)



(x1)



ST5.5x32 (x2)

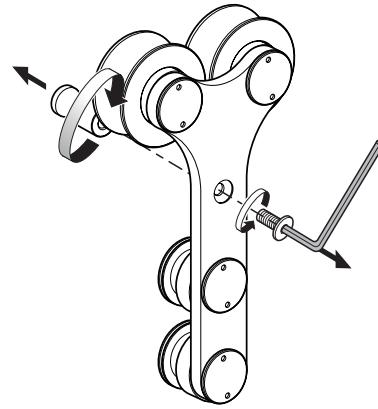


Ø8 x 25 (x2)

1 Prepare Hanger.

Remove anti-rise pin from hanger with provided allen wrench.

Note: Anti-rise pins will be reinstalled in step 9.

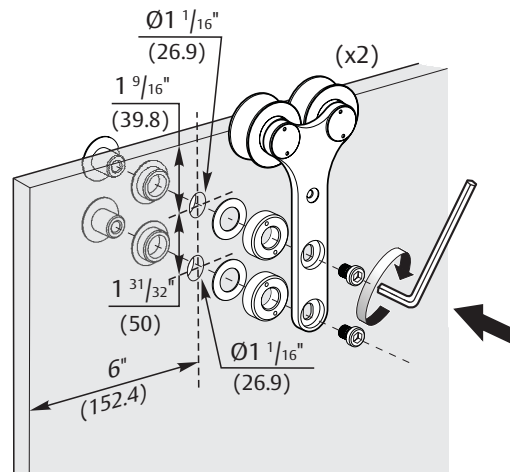


2 Mount hangers to door.

Reinstall all hardware on glass as hanger was disassembled.

Note: Critical plastic bushing are reinstalled to insulate glass from contacting metal components.

IMPORTANT: If bracket fasteners are loosened, they must be re-tightened using a minimum of 11 ft lb of torque.

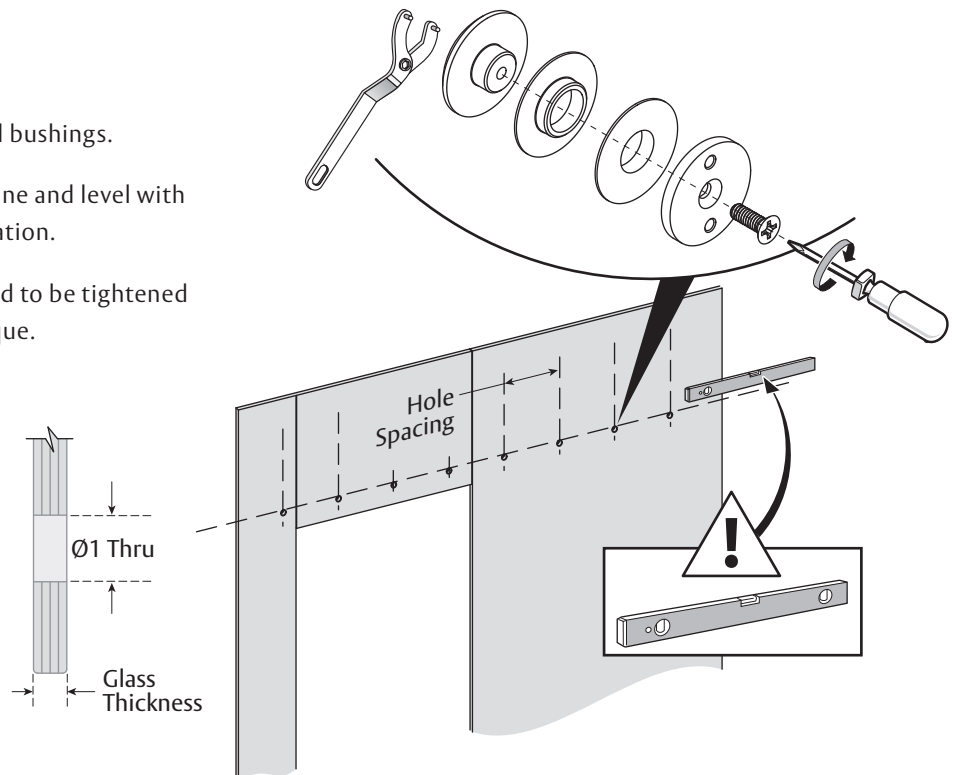


3 Attach brackets.

Install glass mount brackets and bushings.

Ensure all track brackets are in line and level with each other prior to track installation.

Note: Glass mount brackets need to be tightened using a minimum 11 ft lb of torque.

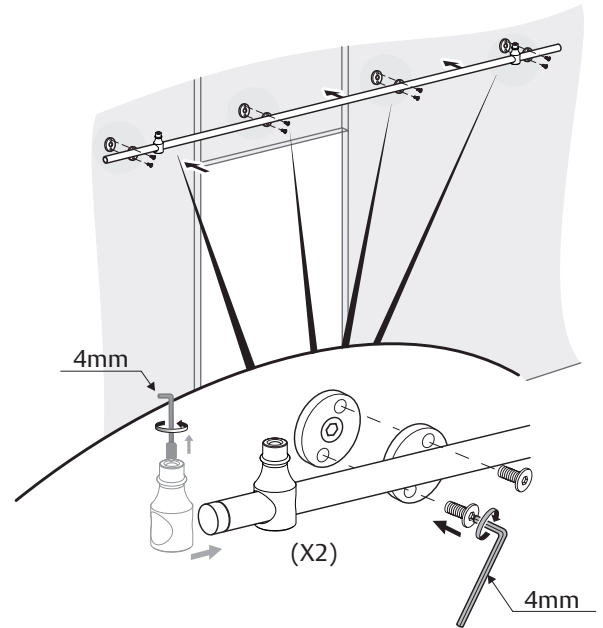


ASSA ABLOY
Opening Solutions

4 Secure track.

Attach stop brackets to track before attaching track to glass brackets as the stop location cannot be beyond the last mounting bracket.

Attach track to glass brackets as shown.

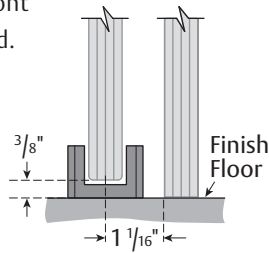


5 Fit door guide to floor.

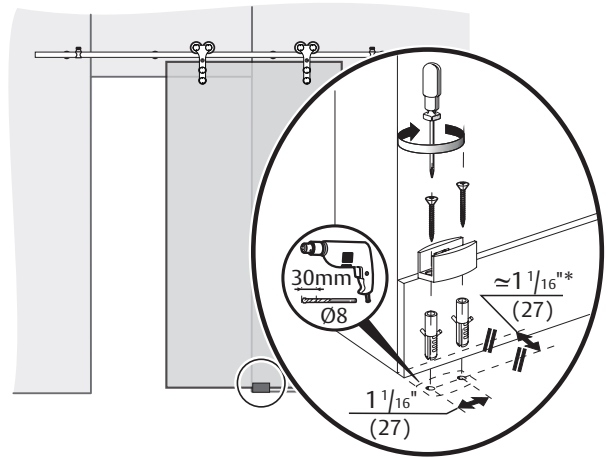
Plumb the door and mark for position of door guide.

Mount door guide to floor.

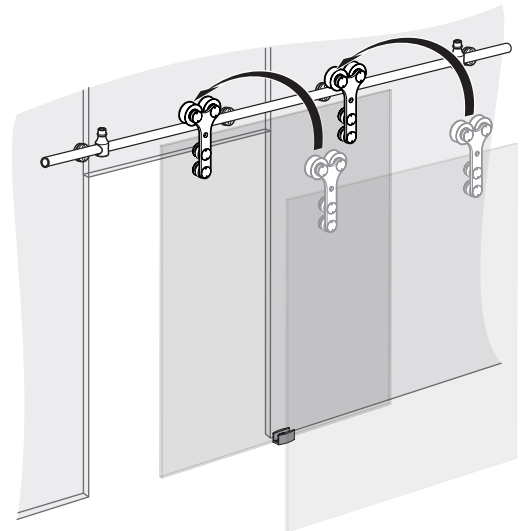
Note: Door guide should be placed in front of wall / sidelite so not a tripping hazard.
Door bottom must remain in guide for both open and closed positions.
Bottom glass clearance to remain $\frac{3}{8}$ " AFF $\pm \frac{1}{8}$ ".



*Dimension from face of sidelite glass varies depending on glass thickness.



6 Hang door.

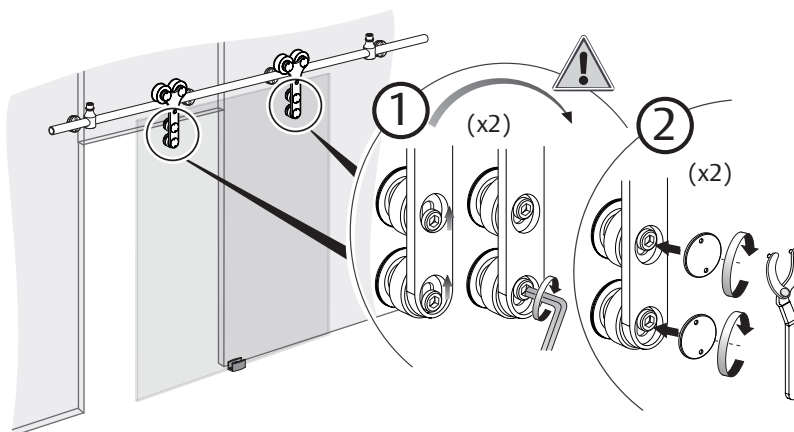


ASSA ABLOY
Opening Solutions

Experience a safer
and more open world

7 Adjust hangers.

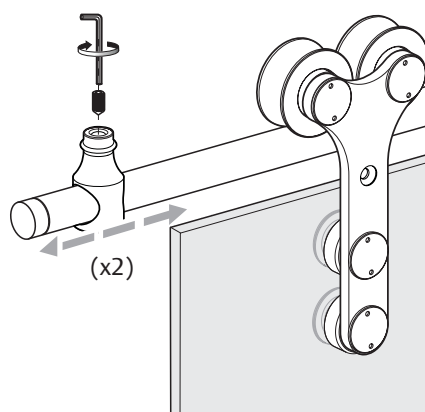
Ensure that door is plumb and level.



8 Adjust stops.

Adjust stops accordingly. Tighten set screw with sufficient force to drive set screw into bar after final adjustment.

IMPORTANT: If bracket fasteners are loosened, they must be re-tightened using a minimum of 11 ft lb of torque.



9 Re-attach anti-rise pins into hangers.

