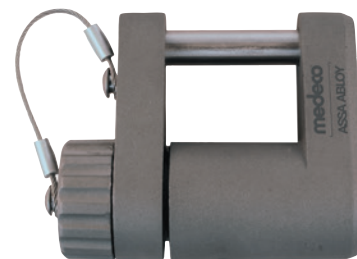


G8R Padlocks

Medeco® offers a variety of High Security Padlocks that are designed to accept both mechanical and Intelligent Key cylinders. With its tough, weather resistant construction, this is the padlock of choice for extreme environments such as trailers, cargo containers, and gates. The Medeco® G8R body is constructed of solid stainless steel. You can choose from either a stainless steel shackle for maximum corrosion resistance, or hardened steel to withstand severe physical attack. Each padlock includes a weather seal cap attached by a cable. The Medeco® G8R will accept either an Intelligent Key or mechanical t-handle cylinder. The mechanical cylinders provide the benefit of patented key control and pick resistance. Intelligent Keys sophisticated audit and control features transforming the G8R into a portable access control system for extreme environments.



Patented Key Control

Protects against unauthorized duplication of your keys.



Protection From Physical Attack

Medeco³ padlock cylinders are UL 437 listed and stand up to drilling, picking and other forms of physical attack. Available in either a hardened steel shackle to withstand severe physical attack or a stainless steel shackle for maximum corrosion resistance.



Weather Resistant Construction

Uses a weather seal cap, attached by a cable, to provide protection from water and road grime.



Available in Intelligent Key

Medeco G8R Padlocks are also available with Medeco Intelligent Key systems for Loss & Liability control.



Special Angle Cut Keys

Requires a special key cutting machine and access to Medeco specific blanks, available in a variety of restrictions to support every need.



Picking and Bumping Protection

Medeco³ cylinders use a sidebar that prevent the key from rotating until it is elevated, rotated and aligned in the correct position. This feature protects against bumping and picking attacks.

Technical Information:

- 300 series, cast stainless steel body.
- Padlock is sold less cylinder. Compatible with Medeco® mechanical and NEXGEN electronic t-handle cylinders.
- Padlocks are shipped with a weather seal cap attached by a steel cable. A finish plate is included for applications that do not require the weather seal cap.
- Sealed construction protects cylinders from water and road grime.
- Stainless steel body resists attack and corrosion.
- Shackles can be specified in stainless or hardened steel to fit your application.

Applications:

- The G8R Series was designed for locking installations requiring weather resistance and strong physical security. Applications include: cargo containers, trailer doors, gates, vending machines.

Warranty:

Warranted for two (2) years against manufacturer's defects. See the Medeco® limited warranty for full details

Available Key Technologies:

Mechanical:

- M³

Intelligent Key:

- Medeco XT
- Classic CLIQ
- Medeco Nexgen

G8R Series Padlock

Description	Part Number	Price
G8R Weather-tight Padlock, 5/16" Stainless Steel Shackle, less pop-out cylinder	52110040	\$198.00
G8R Weather-tight Padlock, 5/16" Hardened Steel Shackle, less pop-out cylinder	52111040	\$198.00
G8R Weather-tight Padlock, 7/16" Stainless Steel Shackle, less pop-out cylinder	52120040	\$198.00
G8R Weather-tight Padlock, 7/16" Hardened Steel Shackle, less pop-out cylinder	52121040	\$198.00
G8R cap and seal kit	94-0213	\$33.50

G8R padlocks are sold less cylinder and use a cam lock style key with pop-out plug.

Keys are charged separately for this style cylinder.

Experience a safer
and more open world

medeco®
ASSA ABLOY

Padlock Cylinders

Description	Part Number	M4	M4 BiLevel	M3	M3 BiLevel	X4
5 Pin Cylinder (6 pin Medeco X4) for Hockey Puck Style Padlock sold between 9/2004 and 9/2023 (KIK style cylinder)	2001600 (P)	\$128.50	\$70.04	\$133.54	\$72.56	\$64.00
	2001600 (S)	\$112.00	\$61.04	\$117.04	\$63.56	\$47.50
6 Pin Cylinder for Hockey Puck Style Padlock sold after 9/2023	2020000 (P)	\$176.50	\$96.20	\$183.70	\$99.80	\$112.00
	2020000 (S)	\$160.00	\$87.20	\$167.20	\$90.80	\$95.50
6 Pin Cylinder for LFIC Medeco Padlocks, 50 (Brass Body Series) & 54 Series	320201 (P)	\$192.50	\$104.92	\$200.42	\$108.88	\$134.35
	320201 (S)	\$176.00	\$95.92	\$183.92	\$99.88	\$117.85
Removable Cylinder to fit 50 Series Brass Padlocks (Note - only available in 06 finish)	320202 (P)	\$169.50		\$176.38		
	320202 (S)	\$153.00		\$159.88		
6 Pin Cylinder for KIK Medeco Padlock, for 54 Series Padlocks	510600 (P)	\$142.50	\$77.93	\$148.17	\$80.77	\$123.96
	510600 (S)	\$126.00	\$68.93	\$131.67	\$71.77	\$107.46
5 Pin Spring Bolt Cylinder (non-key retaining), for G8R Padlock	960357 (P)	\$140.00		\$145.00		
	960357 (S)	\$111.00		\$116.00		
5 Pin Deadbolt Cylinder (key retaining), for G8R Padlock	960358 (P)	\$140.00		\$145.00		
	960358 (S)	\$111.00		\$116.00		
Spacer for use with 5 Pin Cylinders, for G8R Padlock	CP-160691	\$2.46				
5 Pin cylinder (cam lock style) for 52-6 padlocks	66418 (P)			\$128.69		
	66418 (S)			\$99.69		
5 Pin Removable plug for 52-6 padlocks	66391 (P)			\$109.05		
	66391 (S)			\$80.05		

Electronic padlock cylinders are available for many of the padlocks. Refer to the XT and CLIQ sections for specific part numbers and pricing.

Components

Description	Part Number	Price
Component Package for 54 Series Padlocks, NonKey Retaining. Includes CP-130510 Cylinder Extension/Actuator, Spring & Washer, CP-022030 Cylinder Retainer, CP-011511-000 Retainer Screw, CP-250140 Steel Ball Bearing	94-0199	\$17.20
Cylinder Retainer Sleeve (Fits over Cylinder Bible Chamber & holds cylinder in padlock body)	CP-022030	\$9.05
Retainer Screw, #6-32 UNC-2A x .312" length	CP-011511-000	\$0.83
Cylinder Extension/Actuator, Non Key Retaining, Spring & Washer for 54 Series Padlocks	CP-130510	\$7.62
Stainless Steel Ball Bearing for 54 Series Padlocks, .360" Diameter	CP-250140	\$0.83
Cylinder Extension/Actuator, Key Retaining, for 54 Series Padlocks	CP-200720	\$7.62
Chain Assembly for 50 Series Brass Padlocks	CP-280271	\$40.60
Case Cover for 50 Series Brass Padlocks	CP-170250	\$24.40
Shackle Spring for 50 Series Brass Padlocks	CP-030430	\$0.53
Actuator Adaptor for 50 Series Brass Padlocks	CP-130101	\$10.50
Locking Balls for 50 Series Brass Padlocks	CP-250040	\$2.06
3/16" Cylinder Retaining Ball for 50 Series Brass Padlocks	CP-250030	\$0.50
1/16" Hex Allen Wrench - Long Arm to use with 50 Series Brass Padlocks	94-0020	\$6.47
Package for Sub-assembled 50 Series Brass Padlock, Includes: Set screws, retaining ball, Brass Pin Chamber Cover Chain, 7/16" Collar and Rivet, Eye Strap	94-0052	\$19.30

(P) = Pinned (combined)

(S) = Sub-assembled (uncombined)

Surcharges for Master Keying, Custom Coining and Custom Stamping apply, see page 196.
Refer to the XT and CLIQ Intelligent Key sections for format availability and pricing.

Shackles for Indoor/Outdoor Padlocks

Description	Boron Alloy Steel Part Number	Price	Stainless Steel Part Number	Price
Standard Shackle for 54-51 Indoor/Outdoor Padlock, 1-1/8" Shackle Clearance x 5/16" Diameter	CP-144120	\$13.20	CP-144180	\$19.80
Extra Length Shackle for 54-51 Indoor/Outdoor Padlock, 2-3/8" Shackle Clearance x 5/16" Diameter	CP-144130	\$16.00	CP-144190	\$22.20
Standard Shackle for 54-71 Indoor/Outdoor Padlock, 1-3/8" Shackle Clearance x 7/16" Diameter	CP-144150	\$16.00	CP-144210	\$22.20
Extra Length Shackle for 54-71 Indoor/Outdoor Padlock, 1-7/8" Shackle Clearance x 7/16" Diameter	CP-144160	\$17.70	CP-144220	\$24.40

Shackles for Shrouded Padlocks

Description	Boron Alloy Steel Part Number	Price	Stainless Steel Part Number	Price
Standard Shackle for 54-52 Shrouded Padlock, 3/4" Shackle Clearance x 5/16" Diameter	CP-144110	\$13.20	CP-144170	\$19.80
Standard Shackle for 54-72 Shrouded Padlock, 3/4" Shackle Clearance x 7/16" Diameter	CP-144140	\$16.00	CP-144200	\$22.20

Shackles for 50 Series Brass Padlocks

Description	Part Number	Price
2-1/4" Stainless Steel Shackle for 50 Series Brass Padlocks	CP-142543	\$70.20
2-1/4" Hardened Steel Shackle for 50 Series Brass Padlocks	CP-142043	\$65.70

Protector II Series Padlock Cylinder

Description	Part Number	M4	M4 BiLevel	M3	M3 BiLevel	X4
KIK style cylinder for Protector II	500020 (P)	\$120.50		\$125.18		
	500020 (S)	\$104.00		\$108.68		

Protector II Series Padlock Parts

Description	Part Number	Price
Disk For Standard Key In Knob Cylinder	CP-171011	\$19.30
Disk For CLIQ Cylinder	CP-171021	\$19.30
Disk For Medeco XT Cylinder	CP-171031	\$19.30

(P) = Pinned (combined)

(S) = Sub-assembled (uncombined)

Surcharges for Master Keying, Custom Coining and Custom Stamping apply, see page 196.
Refer to the XT and CLIQ Intelligent Key sections for format availability and pricing.