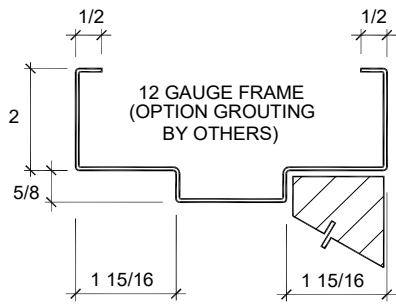
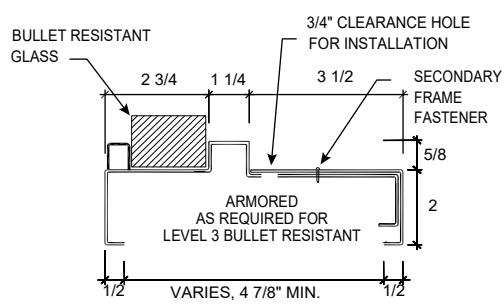


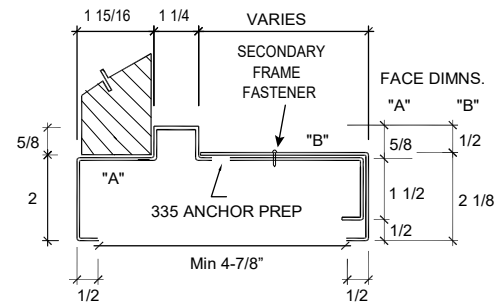
ASSA ABLOY Bullet Resistance Level 1-3



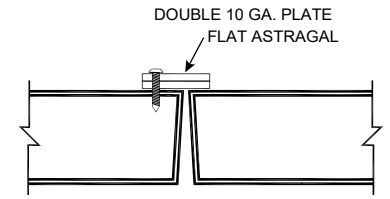
BULLET LEVEL 1-3 FRAME PROFILE



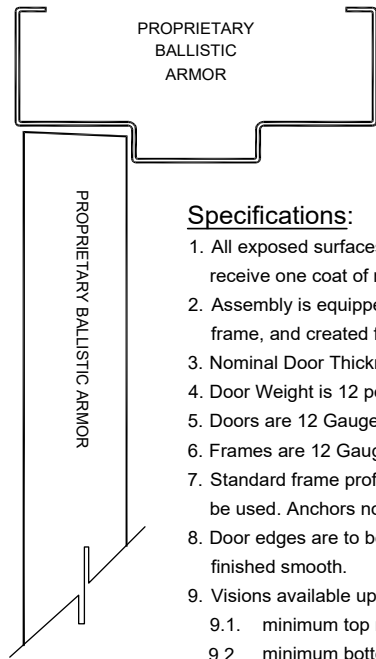
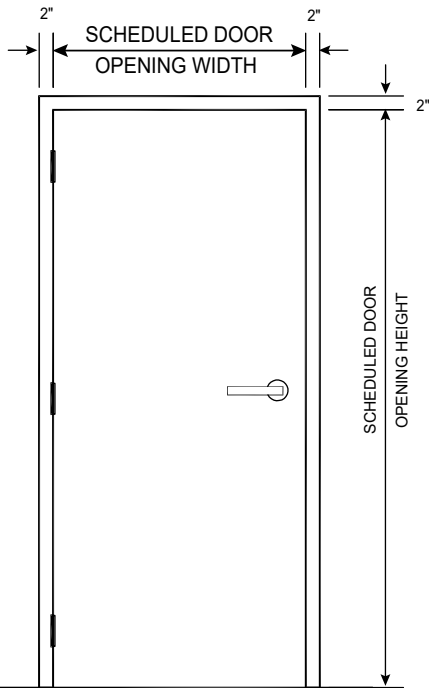
BULLET LEVEL 1-3 SPLIT FRAME LITE



BULLET LEVEL 1-3 SPLIT FRAME PROFILE



BULLET LEVEL 1-3 ASTRAGAL

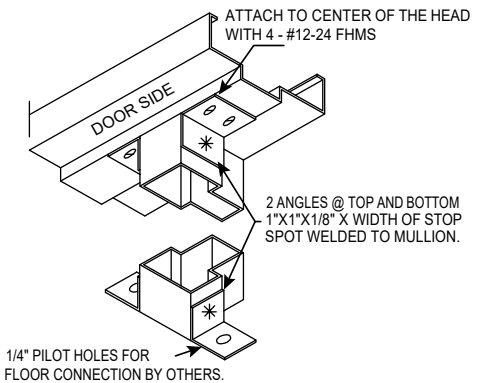


Specifications:

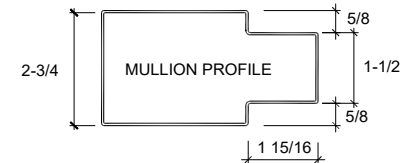
1. All exposed surfaces of door and frame to receive one coat of rust inhibitive prime paint.
2. Assembly is equipped with hollow metal door, frame, and created for shipment.
3. Nominal Door Thickness is 1 3/4".
4. Door Weight is 12 pounds per square foot.
5. Doors are 12 Gauge steel face sheets.
6. Frames are 12 Gauge steel.
7. Standard frame profile and anchor types may be used. Anchors not included.
8. Door edges are to be welded and finished smooth.
9. Visions available up to full glass.
 - 9.1. minimum top rail 8.5"
 - 9.2. minimum bottom rail 12"
 - 9.3. minimum hinge and lock stile 8.5"
10. Available in conjunction with sound, stainless steel, blast, and lead lined options.
11. Available up to 90 minute fire rate for flush assemblies & 90 minutes for doors with visions.

Experience a safer and more open world

Recommended Hardware Preparation



1/4" PILOT HOLES FOR FLOOR CONNECTION BY OTHERS.

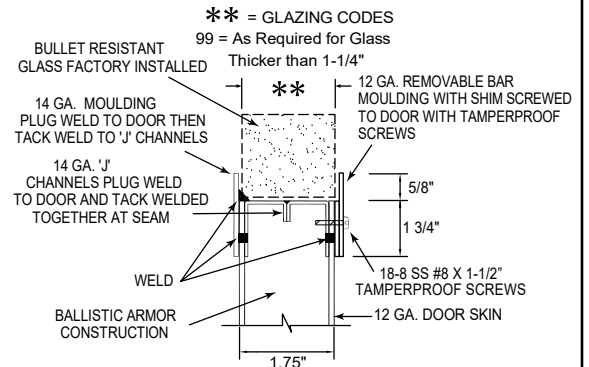


BULLET LEVEL 1-3 REMOVABLE CENTER MULLION

CLEAR VIEW STOCK GLASS SIZE:

6" X 34-1/8" NON-FIRE-RATED

CUSTOM SIZES AVAILABLE. ADDITIONAL 3-4 WEEK LEAD-TIME FOR NON-STOCK GLASS SIZES.



BULLET LEVEL 1-3 VISION Moulding

Rating	Ammunition	Grain	(G)	Velocity (FPS)	Velocity (MPS)	No. of Shots
UL Level 1	9mm Full Metal Jacket with Lead Core	124	8	1175	358	3
UL Level 2	.357 Magnum Jacketed Lead Soft Point	158	10.20	1250	381	3
UL Level 3	.44 Magnum Lead Semi-Wadcutter	240	15.60	1350	411	3

Lock = Cylindrical or mortise lock with ANSI 4 7/8" strike.
 Hinge = 5" hinge or continuous hinge may be used.
 Heavy duty door closer's recommended.
 For additional hardware consult with manufacturer.